

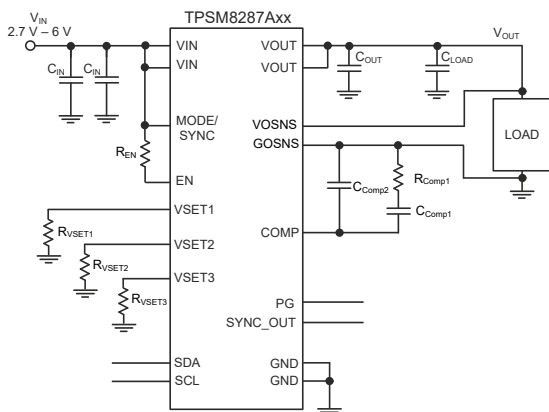
TPSM8287Axx 2.7-V to 6-V Input, 6-A, 10-A, 12-A, and 15-A, Parallelable Step-Down Power Module With I²C Interface and Remote Sense

1 Features

- $\pm 1\%$ output voltage accuracy
- Differential remote sensing
- Parallelable for multi-phase operation
- Start-up output voltage selectable in 50-mV steps from 0.40 V to 3.35 V through VSETx pins and I²C adjustable in 1.25-mV steps
- 5 selectable I²C addresses through VSETx pins
- Adjustable external compensation for wide output capacitor range and optimized transient response
- Optimized for low EMI requirements
 - No bond wire package
 - Internal input capacitors
 - Simplified layout through parallel input path
 - Optional synchronization to external clock or spread-spectrum operation
- Power-save Mode or forced-PWM operation
- Precise enable input threshold
- Power-good output with window comparator
- Active output discharge
- [Excellent thermal performance](#)
- -40°C to 125°C operating temperature range
- 4.5-mm \times 6.8-mm QFN package with 0.5-mm pitch
- 77-mm² solution size

2 Applications

- [FPGA, ASIC and digital core supply](#)
- [Optical networks](#)
- [Storage](#)
- [DDR memory supply](#)
- [Test and measurement equipment](#)



TPSM8287Axx Simplified Schematic

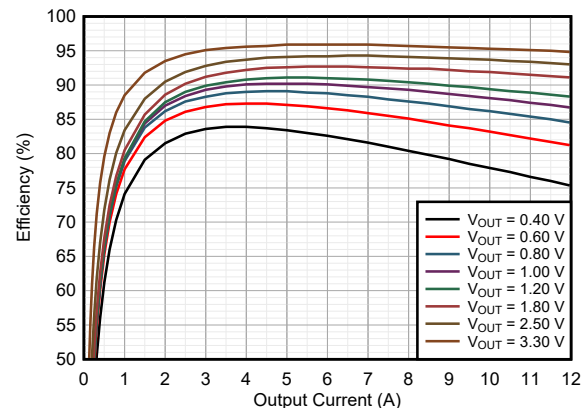
3 Description

The TPSM8287Axx is a family of pin-to-pin step-down DC/DC power Modules with differential remote sensing and I²C interface. The power modules integrate a synchronous step-down converter, an inductor and input capacitors to simplify design, reduce external components and save PCB area. The low-profile and compact solution is suitable for assembly by standard surface mount equipment. The TPSM8287Axx family implements an enhanced control scheme that supports fast transients. It can operate in fixed-frequency or power-save mode. The remote sensing feature optimizes voltage regulation at the point-of-load and the device achieves $\pm 1\%$ DC voltage accuracy over the entire temperature range. The devices can operate in stacked / paralleled mode to deliver higher output currents or to spread the power dissipation across multiple devices. The I²C-compatible interface offers several control, monitoring and warning features. The start-up voltage is selectable through the VSETx pins to allow a power-up without an active I²C communication.

Device Information

PART NUMBER	CURRENT RATING	PACKAGE ⁽¹⁾	PACKAGE HEIGHT ⁽²⁾
TPSM8287A06BAS ⁽³⁾	6 A	RDV (B0QFN, 39)	1.8 mm
TPSM8287A12BAS ⁽³⁾	12 A		
TPSM8287A12BBS	12 A		
TPSM8287A10BAH ⁽³⁾	10 A	RDW (B0QFN, 39)	4.0 mm
TPSM8287A15BBH ⁽³⁾	15 A		

- (1) For all available packages, see the orderable addendum.
- (2) The package size is a nominal value.
- (3) Product preview.



Efficiency TPSM8287A12BAS (VIN = 5.0 V; FPWM)



Table of Contents

1 Features	1	8.5 Programming.....	32
2 Applications	1	8.6 Device Registers.....	35
3 Description	1	9 Application and Implementation	41
4 Revision History	2	9.1 Application Information.....	41
5 Device Options	3	9.2 Typical Application.....	41
6 Pin Configuration and Functions	4	9.3 Power Supply Recommendations.....	51
7 Specifications	6	9.4 Layout.....	51
7.1 Absolute Maximum Ratings.....	6	10 Device and Documentation Support	53
7.2 ESD Ratings.....	6	10.1 Device Support.....	53
7.3 Recommended Operating Conditions.....	6	10.2 Documentation Support	53
7.4 Thermal Information.....	7	10.3 Receiving Notification of Documentation Updates.....	53
7.5 Electrical Characteristics.....	7	10.4 Support Resources.....	53
7.6 I ² C Interface Timing Characteristics.....	9	10.5 Trademarks.....	53
7.7 Typical Characteristics.....	11	10.6 Electrostatic Discharge Caution.....	53
8 Detailed Description	12	10.7 Glossary.....	53
8.1 Overview.....	12	11 Mechanical, Packaging, and Orderable Information	54
8.2 Functional Block Diagram.....	12	11.1 Tape and Reel Information.....	54
8.3 Feature Description.....	13		
8.4 Device Functional Modes.....	31		

4 Revision History

NOTE: Page numbers for previous revisions may differ from page numbers in the current version.

DATE	REVISION	NOTES
July 2023	*	Initial release

5 Device Options

Table 5-1. Devices With I²C Interface

ORDERABLE PART NUMBER ⁽¹⁾	OUTPUT CURRENT	NOMINAL INDUCTANCE	OPERATING FREQUENCY	PACKAGE HEIGHT
TPSM8287A06BASRDVR ⁽²⁾	6 A	220 nH ± 20%	1.5 MHz	1.8 mm
TPSM8287A12BASRDVR ⁽²⁾	12 A	100 nH ± 20%	1.5 MHz	
TPSM8287A12BBSRDVR	12 A	100 nH ± 20%	2.25 MHz	
TPSM8287A10BAHRDWR ⁽²⁾	10 A	150 nH ± 20%	1.5 MHz	4.0 mm
TPSM8287A15BBHRDWR ⁽²⁾	15 A	150 nH ± 20%	2.25 MHz	

1. For all available packages, see the orderable addendum at the end of the data sheet.
2. Product preview.

6 Pin Configuration and Functions

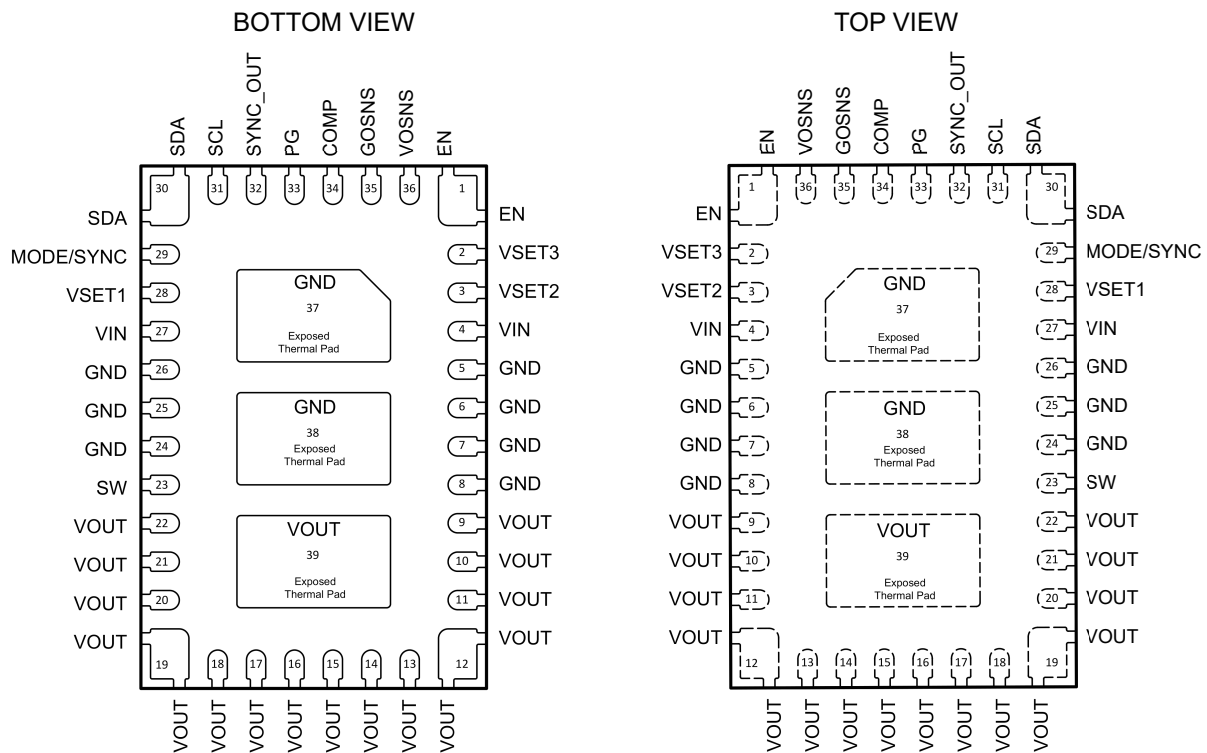


Figure 6-1. TPSM8287Axx QFN (39 Pin)

Table 6-1. Pin Functions

PIN		I/O	DESCRIPTION
NO.	NAME		
35	GOSNS	I	Output ground sense (differential output voltage sensing). Connect at the load.
36	VOSNS	I	Output voltage sense (differential output voltage sensing). Connect at the load.
1	EN	I	This pin is the enable pin of the device. The user must connect to it using a series resistor of at least 15 kΩ. A low logic level on this pin disables the device, and a high logic level on this pin enables the device. Do not leave this pin unconnected. For stacked operation, connect the EN pins of all stacked devices together with a resistor to the supply voltage or a GPIO of a processor. See Stacked Operation for a detailed description.
4, 27	VIN	P	Power supply input. Connect an input capacitor as close as possible between each VIN and GND (on both sides of the package).
5, 6, 7, 8, 24, 25, 26	GND	GND	Ground pin
9 - 22	VOUT	P	Output voltage pin
23	SW	O	This pin is the switch pin of the converter and is connected to the internal Power MOSFETs. This pin can be left floating.

Table 6-1. Pin Functions (continued)

PIN		I/O	DESCRIPTION
NO.	NAME		
33	PG	I/O	Open-drain power-good output with window comparator. This pin is pulled to GND while VOUT is outside the power-good threshold. This pin can be left open or tied to GND if not used in single device operation. A pullup resistor can be connected to any voltage not larger than 6.5 V. In stacked operation, connect the PG pins of all stacked devices together. Only the PG pin of the primary converter in stacked operation is an open drain output. For devices that are defined as secondary converters in stacked mode, the pin is an input pin. See Stacked Operation for a detailed description.
29	MODE/SYNC	I	The device runs in power save mode when this pin is pulled low. If the pin is pulled high, the device runs in forced-PWM mode. If unused, this pin can be left floating and an internal pulldown resistor pulls it low. The pin can also be used to synchronize the device to an external clock. See Section 8.3.8 for a detailed description.
30	SDA	I/O	I ² C serial data pin. Do not leave floating. Connect a pullup resistor to a logic high level. For secondary devices in stacked operation, or if the I ² C interface is not used, connect the pin to GND.
31	SCL	I	I ² C serial clock pin. Do not leave this pin floating. Connect a pullup resistor to a logic high level. For secondary devices in stacked operation, or if the I ² C interface is not used, connect the pin to GND.
32	SYNC_OUT	I/O	Internal clock output pin for synchronization in stacked mode. Leave this pin floating for single device operation. Connect this pin to the MODE/SYNC pin of the next device in the daisy-chain in stacked operation. <i>Do not use this pin to connect to a non-TPSM8287Axx device.</i> During start-up, this pin is used to identify if a device must operate as a secondary converter in stacked operation. Connect a 47-kΩ resistor from this pin to GND to define a secondary converter in stacked operation. See Stacked Operation for a detailed description.
28	VSET1	I/O	Start-up output voltage and I ² C address selection pin. A resistor or short circuit to GND or V _{IN} defines the selected output voltage and I ² C address. See Table 8-2 .
3	VSET2	I/O	
2	VSET3	I/O	
34	COMP	I/O	Device compensation input. A resistor and capacitor from this pin to GOSNS define the compensation of the control loop. In stacked operation, connect the COMP pins of all stacked devices together and connect a resistor and capacitor between the common COMP node and GOSNS.
37, 38	GND Exposed Thermal Pad	—	The thermal pad must be soldered to GND to achieve an appropriate thermal resistance and for mechanical stability.
39	VOUT Exposed Thermal Pad	—	The thermal pad must be soldered to VOUT to achieve an appropriate thermal resistance and for mechanical stability.

7 Specifications

7.1 Absolute Maximum Ratings

over operating temperature range (unless otherwise noted)⁽¹⁾

		MIN	MAX	UNIT
Voltage ⁽²⁾	VIN, VSET1, VSET2, VSET3, PG, EN, MODE/SYNC	−0.3	6.5	V
	SW (DC), VOUT	−0.3	VIN + 0.3	
	SW (AC, less than 10ns) ⁽³⁾	−3	10	
	COMP	−0.3	VIN	
	VOSNS	−0.3	3.8	
	GOSNS	−0.3	0.3	
	SCL, SDA	−0.3	5.5	
	SYNC_OUT	−0.3	2	
Current	SYNC_OUT, COMP	−1	1	mA
	SDA		9	
	EN		0.5	
	PG		10	
TJ	Junction temperature	−40	125	°C
Tstg	Storage temperature	−40	125	

- (1) Operation outside the Absolute Maximum Ratings may cause permanent device damage. Absolute Maximum Ratings do not imply functional operation of the device at these or any other conditions beyond those listed under Recommended Operating Conditions. If used outside the Recommended Operating Conditions but within the Absolute Maximum Ratings, the device may not be fully functional, and this may affect device reliability, functionality, performance, and shorten the device lifetime.
- (2) All voltage values are with respect to the GND pin.
- (3) While switching.

7.2 ESD Ratings

			VALUE	UNIT
V(ESD)	Electrostatic discharge	Human body model (HBM), per ANSI/ESDA/JEDEC JS-001 ⁽¹⁾	±2000	V
		Charged device model (CDM), per ANSI/ESDA/JEDEC JS-002 ⁽²⁾	±750	

- (1) JEDEC document JEP155 states that 500-V HBM allows safe manufacturing with a standard ESD control process.
- (2) JEDEC document JEP157 states that 250-V CDM allows safe manufacturing with a standard ESD control process.

7.3 Recommended Operating Conditions

			MIN	NOM	MAX	UNIT
VIN	Input voltage	VIN	2.7		6	V
		SDA, SCL	0		5	
VOUT	Output voltage	VOUT	0.4		3.35 V or (VIN - 1.4 V) ⁽¹⁾	V
IOUT	Output current ⁽³⁾	TPSM8287A06BAS			6	A
		TPSM8287A10BAH			10	
		TPSM8287A12BAS, TPSM8287A12BBS			12	
		TPSM8287A15BBH			15	
ISINK_PG	Sink current at PG pin				10	mA
CIN	Input capacitance (per pin) ⁽²⁾	VIN	5	10		μF
COUT	Output capacitance ⁽²⁾	TPSM8287A06BAS, TPSM8287A10BAH, TP SM8287A12BAS	60		⁽⁴⁾	
COUT	Output capacitance ⁽²⁾	TPSM8287A12BBS, TPSM8287A15BBH	40		⁽⁴⁾	
RVSET	Resistor value	VSET1, VSET2, VSET3	37.6	47	56.4	kΩ

7.3 Recommended Operating Conditions (continued)

			MIN	NOM	MAX	UNIT
R _{SYNC_OUT}	Resistor value	SYNC_OUT	37.6	47	56.4	kΩ
C _{PAR}	Parasitic capacitance	VSET1, VSET2, VSET3			100	pF
		SYNC_OUT			20	
T _J	Operating junction temperature		–40		125	°C

- (1) Whichever value is lower.
- (2) Effective capacitance.
- (3) In stacked operation, the maximum output current per phase could be reduced. See [Stacked Operation](#) for details.
- (4) The maximum recommended output capacitance depends on the specific operating conditions of an application. Output capacitance values up to a few mF are typically possible, however.

7.4 Thermal Information

THERMAL METRIC ⁽¹⁾		TPSM8287Axx		UNIT
		39 PINS		
		RDV JEDEC 51-5	RDV EVM	
R _{θJA}	Junction-to-ambient thermal resistance	31.6	19.5	°C/W
R _{θJC(top)}	Junction-to-case (top) thermal resistance	28.7	n/a ⁽²⁾	°C/W
R _{θJB}	Junction-to-board thermal resistance	10.1	n/a ⁽²⁾	°C/W
Ψ _{JT}	Junction-to-top characterization parameter	5.1	3.1	°C/W
Ψ _{JB}	Junction-to-board characterization parameter	10.0	8.8	°C/W
R _{θJC(bot)}	Junction-to-case (bottom) thermal resistance	7.3	n/a ⁽²⁾	°C/W

- (1) For more information about traditional and new thermal metrics, see the [Semiconductor and IC Package Thermal Metrics](#) application report.
- (2) Not applicable to an EVM.

7.5 Electrical Characteristics

T_J = –40 °C to 125 °C, and V_{IN} = 2.7 V to 6 V. Typical values at V_{IN} = 3.3 V and T_J = 25 °C. (unless otherwise noted)

PARAMETER		TEST CONDITIONS	MIN	TYP	MAX	UNIT
SUPPLY						
I _{Q_VIN}	Quiescent current (VIN)	EN = high, I _{OUT} = 0 mA, V _(SW) = 0 V, standalone operation, device not switching, T _J = 25 °C		1.75	3	mA
I _{SD}	Shutdown current (VIN)	EN = low, V _(SW) = 0 V, T _J = 25 °C		16.5	40	μA
V _{IT+(UVLO)}	Positive-going UVLO threshold voltage (VIN)		2.5	2.6	2.7	V
V _{IT–(UVLO)}	Negative-going UVLO threshold voltage (VIN)		2.4	2.5	2.6	V
V _{hys(UVLO)}	UVLO hysteresis voltage (VIN)		90			mV
V _{IT+(OVLO)}	Positive-going OVLO threshold voltage (VIN)		6.1	6.3	6.5	V
V _{IT–(OVLO)}	Negative-going OVLO threshold voltage (VIN)		6.0	6.2	6.4	V
V _{hys(OVLO)}	OVLO hysteresis voltage (VIN)		85			mV
V _{POR–}	Negative-going power-on reset (POR) threshold (VIN)		1.4			V
T _{SD}	Thermal shutdown threshold temperature	T _J rising		170		°C
	Thermal shutdown hysteresis			20		°C

7.5 Electrical Characteristics (continued)

$T_J = -40\text{ }^{\circ}\text{C}$ to $125\text{ }^{\circ}\text{C}$, and $V_{IN} = 2.7\text{ V}$ to 6 V . Typical values at $V_{IN} = 3.3\text{ V}$ and $T_J = 25\text{ }^{\circ}\text{C}$. (unless otherwise noted)

PARAMETER		TEST CONDITIONS	MIN	TYP	MAX	UNIT
T_W	Thermal warning threshold temperature	T_J rising		150		$^{\circ}\text{C}$
	Thermal warning hysteresis			20		$^{\circ}\text{C}$
CONTROL and INTERFACE						
V_{IT+}	Positive-going input threshold voltage (EN)		0.97	1.0	1.03	V
V_{IT-}	Negative-going input threshold voltage (EN)		0.87	0.9	0.93	V
V_{hys}	Hysteresis voltage (EN)		95			mV
I_{IH}	High-level input current (EN)	$V_{EN} = V_{IN}$, internal pulldown resistor disabled			200	nA
I_{IL}	Low-level input current (EN)	$V_{EN} = 0\text{ V}$, internal pulldown resistor disabled	-200			nA
V_{IH}	High-level input voltage (SDA, SCL, MODE/SYNC)		0.8			V
V_{IL}	Low-level input voltage (SDA, SCL, MODE/SYNC)				0.4	V
V_{OL}	Low-level output voltage (SDA)	$I_{OL} = 9\text{ mA}$			0.4	V
		$I_{OL} = 5\text{ mA}$			0.2	V
I_{LKG}	Input leakage current into SDA, SCL	$V_{OH} = 3.3\text{ V}$			200	nA
I_{IL}	Low-level input current (MODE/SYNC)	$V_{MODE/SYNC} = 0\text{ V}$	-150		150	nA
I_{IH}	High-level input current (MODE/SYNC)	$V_{MODE/SYNC} = V_{IN}$			3	μA
$t_{d(EN)1}$	Enable delay time when EN tied to V_{IN}	Measured from when EN goes high to when device starts switching $SR_{VIN} = 1\text{ V}/\mu\text{s}$		210	535	μs
$t_{d(EN)2}$	Enable delay time when V_{IN} already applied	Measured from when EN goes high to when device starts switching			100	μs
$t_{d(RAMP)}$	Output voltage ramp time	Measured from when device starts switching to rising edge of PG. Selectable with I^2C . See Table 8-12 .	0.35	0.5	0.65	ms
			0.7	1	1.3	ms
			1.4	2	2.6	ms
			2.8	4	5.2	ms
T_{SYNC_LOCK}	Time to lock external frequency			50		μs
$f_{(SYNC)}$	Synchronization clock frequency range (MODE/SYNC)	TPSM8287A06BAS, TPSM8287A10BAH, TPSM8287A12BAS	1.3		2.0	MHz
$f_{(SYNC)}$	Synchronization clock frequency range (MODE/SYNC)	TPSM8287A12BBS, TPSM8287A15BBH	1.8		2.7	MHz
$D_{(SYNC)}$	Synchronization clock duty cycle range (MODE/SYNC)		45		55	
$V_{T+(UVP)}$	Positive-going power good threshold voltage (output undervoltage)		94	96	98	$\%V_{OUT}$
$V_{T-(UVP)}$	Negative-going power good threshold voltage (output undervoltage)		92	94	96	$\%V_{OUT}$
$V_{T+(OVP)}$	Positive-going power good threshold voltage (output overvoltage)		104	106	108	$\%V_{OUT}$
$V_{T-(OVP)}$	Negative-going power good threshold voltage (output overvoltage)		102	104	106	$\%V_{OUT}$
V_{OL}	Low-level output voltage (PG)	$I_{OL} = 10\text{ mA}$			0.3	V
I_{LKG}	Input leakage current into PG	$V_{OH} = 3.3\text{ V}$			200	nA
V_{IH}	High-level input voltage (PG)	Device configured as a secondary device in stacked operation	0.8			V

7.5 Electrical Characteristics (continued)

$T_J = -40\text{ }^{\circ}\text{C}$ to $125\text{ }^{\circ}\text{C}$, and $V_{IN} = 2.7\text{ V}$ to 6 V . Typical values at $V_{IN} = 3.3\text{ V}$ and $T_J = 25\text{ }^{\circ}\text{C}$. (unless otherwise noted)

PARAMETER		TEST CONDITIONS	MIN	TYP	MAX	UNIT
V_{IL}	Low-level input voltage (PG)	Device configured as a secondary device in stacked operation			0.4	V
I_{IH}	High-level input current (PG)	Device configured as a secondary device in stacked operation			1	μA
I_{IL}	Low-level input current (PG)	Device configured as a secondary device in stacked operation	–1			μA
$t_{d(PG)}$	Deglintch time (PG)	High-to-low or low-to-high transition on the PG pin	34	40	46	μs
OUTPUT						
V_{OUT}	Output voltage accuracy	$V_{IN} \geq V_{OUT} + 1.4\text{ V}$	–1		1	%
V_{ICR}	Input common-mode range (VOSNS)		–100	$V_{O(nom)} + 100$		mV
V_{ICR}	Input common-mode range (GOSNS)		–100		100	mV
f_{SW}	Switching frequency (SW)	$f_{SW} = 1.5\text{ MHz}$, PWM operation, $V_{IN} = 3.3\text{ V}$, $V_{OUT} = 0.75\text{ V}$	1.35	1.5	1.65	MHz
		$f_{SW} = 2.25\text{ MHz}$, PWM operation, $V_{IN} = 3.3\text{ V}$, $V_{OUT} = 0.75\text{ V}$	2.025	2.25	2.475	
f_{mod}	Frequency of the spread-spectrum sweep		$f_{SW}/2048$			kHz
Δf_{SW}	Switching frequency variation during spread-spectrum operation		$\pm 10\%$			
τ	Emulated current time constant		12.5			μs
g_m	Error amplifier transconductance		1.5			mS
I_{LIM}	High-side FET forward switch current limit, DC	TPSM8287A06BAS	9	12	14	A
		TPSM8287A10BAH	11	15	17	
		TPSM8287A12BAS, TPSM8287A12BBS	15	19	21	
		TPSM8287A15BBH	18	24	26	
	Low-side FET negative current limit, DC		7.5			A

7.6 I²C Interface Timing Characteristics

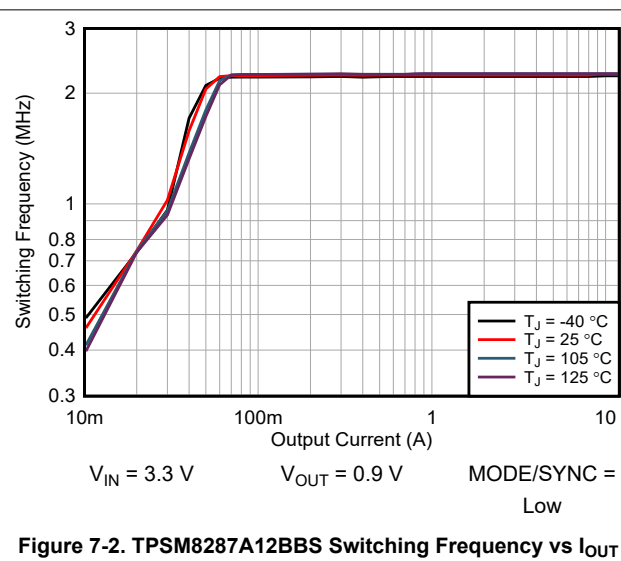
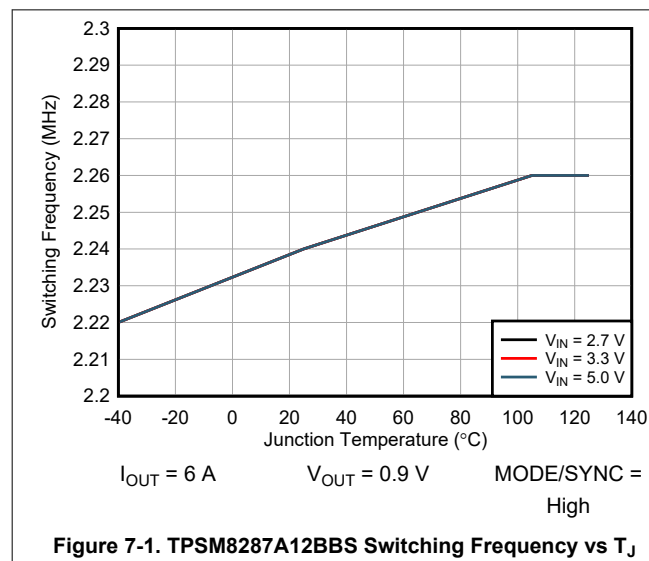
PARAMETER		TEST CONDITIONS	MIN	MAX	UNIT
f_{SCL}	SCL clock frequency	Standard mode		100	kHz
		Fast mode		400	
		Fast mode plus		1000	
t_{HD} , t_{STA}	Hold time (repeated) START condition	Standard mode	4		μs
		Fast mode	0.6		
		Fast mode plus	0.26		
t_{LOW}	LOW period of the SCL clock	Standard mode	4.7		μs
		Fast mode	1.3		
		Fast mode plus	0.5		
t_{HIGH}	HIGH period of the SCL clock	Standard mode	4		μs
		Fast mode	0.6		
		Fast mode plus	0.26		
t_{SU} , t_{STA}	Setup time for a repeated START condition	Standard mode	4.7		μs
		Fast mode	0.6		
		Fast mode plus	0.26		

7.6 I²C Interface Timing Characteristics (continued)

PARAMETER		TEST CONDITIONS	MIN	MAX	UNIT
t _{HD} ; t _{DAT}	Data hold time	Standard mode	0	3.45	μs
		Fast mode	0	0.9	
		Fast mode plus	0		
t _{SU} ; t _{DAT}	Data setup time	Standard mode	250		ns
		Fast mode	100		
		Fast mode plus	50		
t _r	Rise time of both SDA and SCL signals	Standard mode		1000	ns
		Fast mode	20	300	
		Fast mode plus		120	
t _f	Fall time of both SDA and SCL signals	Standard mode		300	ns
		Fast mode	20×V _{DD} /5.5 V ⁽¹⁾	300	
		Fast mode plus	20×V _{DD} /5.5 V ⁽¹⁾	120	
t _{SU} ; t _{STO}	Setup time for STOP condition	Standard mode	4		μs
		Fast mode	0.6		
		Fast mode plus	0.26		
t _{BUF}	Bus free time between a STOP and START condition	Standard mode	4.7		μs
		Fast mode	1.3		
		Fast mode plus	0.5		
C _b	Capacitive load for each bus line	Standard mode		400	pF
		Fast mode		400	
		Fast mode plus		550	

(1) V_{DD} is the pullup voltage of SDA and SCL

7.7 Typical Characteristics



8 Detailed Description

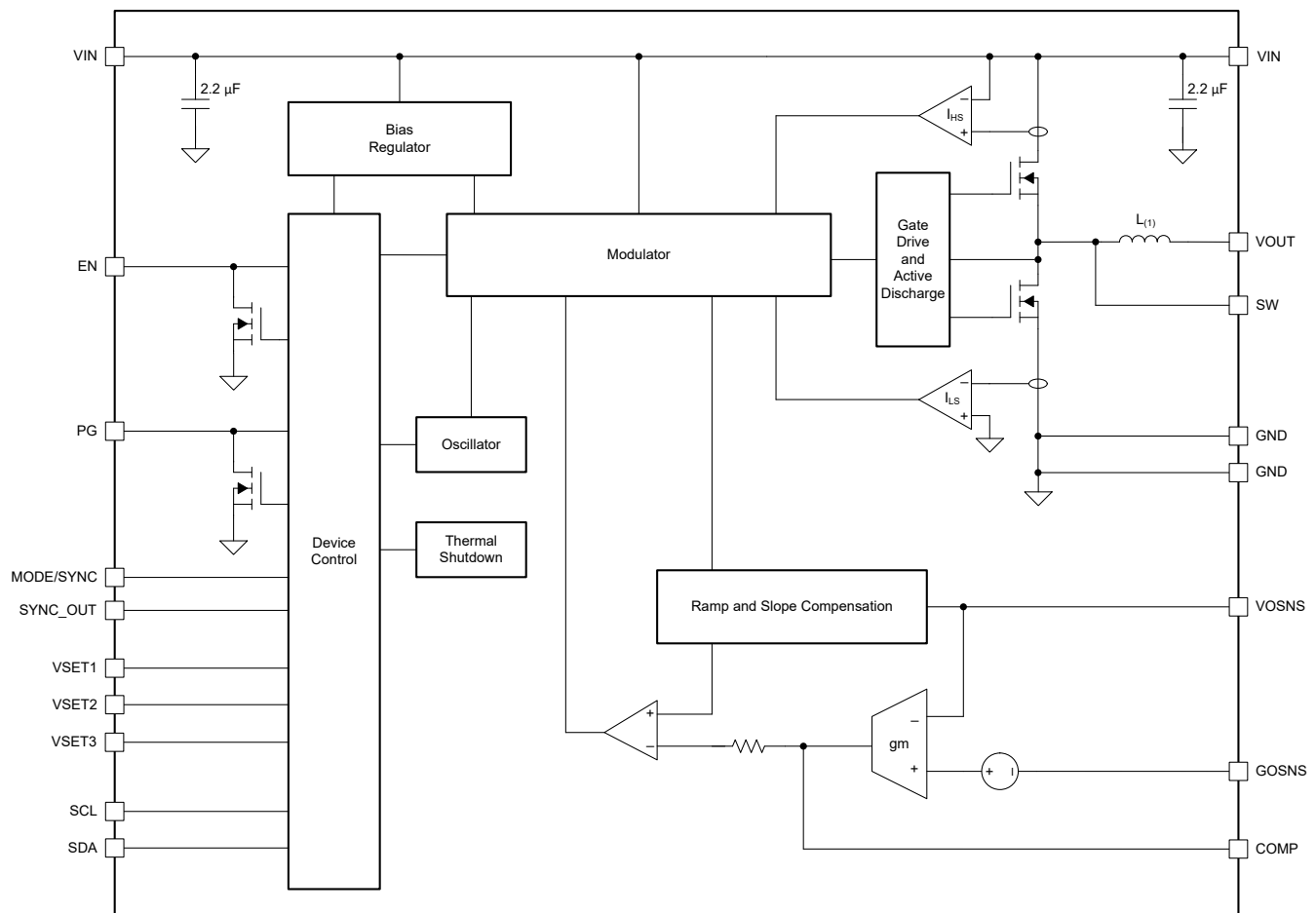
8.1 Overview

The TPSM8287Axx synchronous, step-down converter power modules use an enhanced DCS-control topology to achieve fast transient response while switching with a fixed frequency during normal operation. This control topology, together with their low output voltage ripple, high DC accuracy and differential remote sense, makes them designed for supplying the cores of modern high-performance processors or other voltage rails with tight regulation requirements.

As the load current decreases, the converter can enter power save mode based on the MODE/SYNC pin, reducing the switching frequency and entering DCM to achieve high efficiency over the entire load current range.

This pin-to-pin compatible family of modules includes 6-A, 10-A, 12-A, and 15-A variants. To further increase the output current capability, combine multiple devices in a “stack”. For example, paralleling four 15-A devices can provide up to 60 A of current.

8.2 Functional Block Diagram



(1) For inductance values please refer to [Table 5-1](#).

8.3 Feature Description

8.3.1 Fixed-Frequency DCS-Control Topology

Figure 8-1 shows a simplified block diagram of the fixed-frequency DCS-control topology used in the TPSM8287Axx devices. This topology comprises an inner emulated current loop, a middle direct feedback loop, and an outer voltage-regulating loop. The differential remote sense allows for precise voltage regulation at the load. The external compensation allows fine tuning the load transient response for a wide range of output capacitance and load transient requirements.

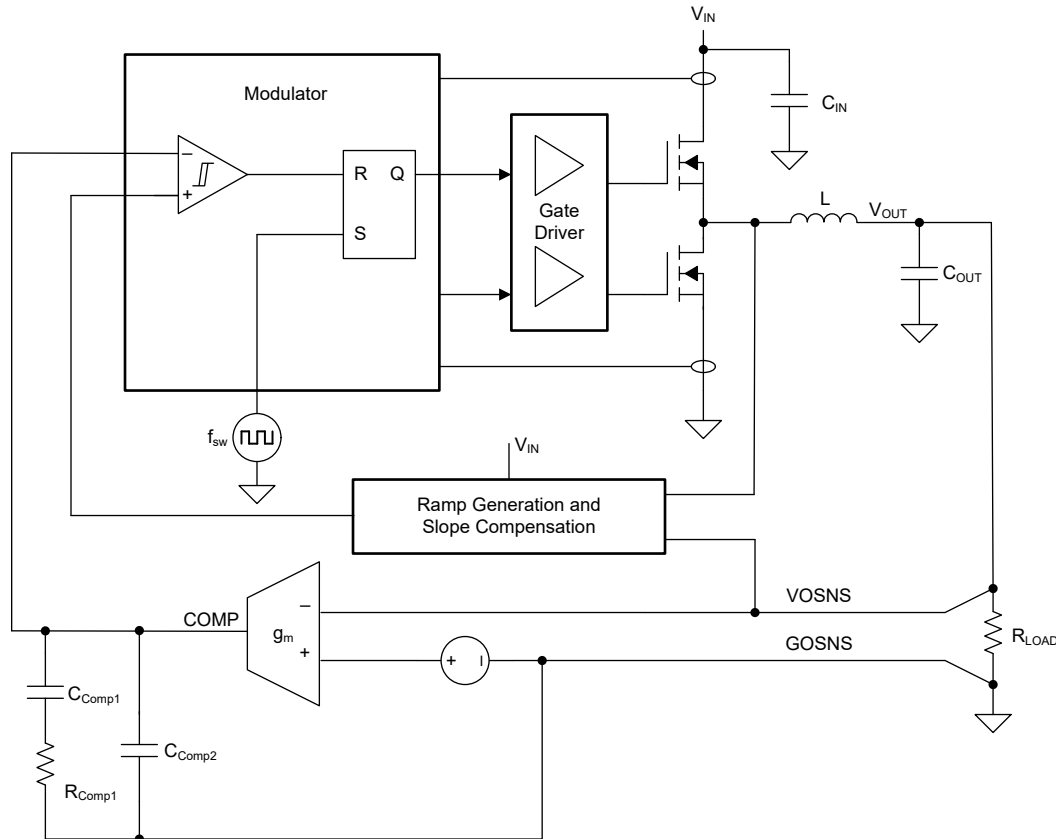


Figure 8-1. Fixed-Frequency DCS-Control Topology (Simplified)

8.3.2 Forced-PWM and Power-Save Modes

The device can control the inductor current in three different ways to regulate the output:

- Pulse-width modulation with continuous inductor current (PWM-CCM)
- Pulse-width modulation with discontinuous inductor current (PWM-DCM)
- Pulse-frequency modulation with discontinuous inductor current and pulse skipping (PFM-DCM)

The on-time in PWM-CCM is set by Equation 1. For very small output voltages, a minimum on time of approximately 50 ns (t_{ON_min}) reduces the switching frequency from the set value. Even when the minimum on-time is reached, the device maintains proper output voltage regulation by extending the off-time.

$$t_{ON} = \frac{V_{OUT}}{V_{IN} \times f_{SW}} \quad (1)$$

During PWM-CCM operation, the device switches at a constant frequency and the inductor current is continuous (see Figure 8-2). PWM operation achieves the lowest output voltage ripple and the best transient performance.

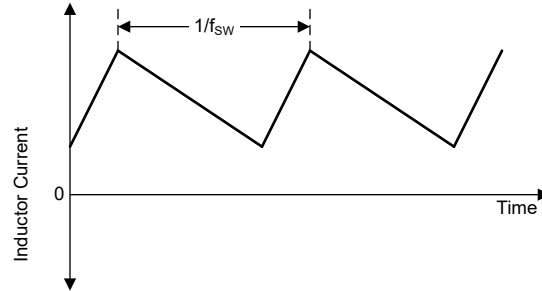


Figure 8-2. Continuous Conduction Mode (PWM-CCM) Current Waveform

During PWM-DCM operation the device switches at a constant frequency and the inductor current is discontinuous (see Figure 8-3). In this mode the device controls the peak inductor current to maintain the selected switching frequency while still being able to regulate the output.

Equation 2 is used to calculate the output current threshold at which the device changes from PWM-CCM to PWM-DCM:

$$I_{OUT(CCM-DCM)} = \frac{V_{IN} \times t_{ON}}{2} \times \frac{1 - \frac{V_{OUT}}{V_{IN}}}{L} \quad (2)$$

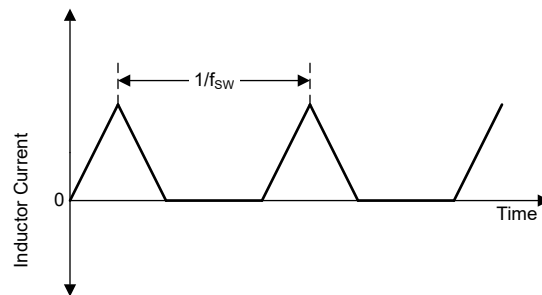


Figure 8-3. Discontinuous Conduction Mode (PWM-DCM) Current Waveform

During PFM-DCM operation the device keeps the peak inductor current constant (at a level corresponding to an approximately 20-ns on-time of the converter) and skips pulses to regulate the output (see Figure 8-4). The switching pulses that occur during PFM-DCM operation are synchronized to the internal clock.

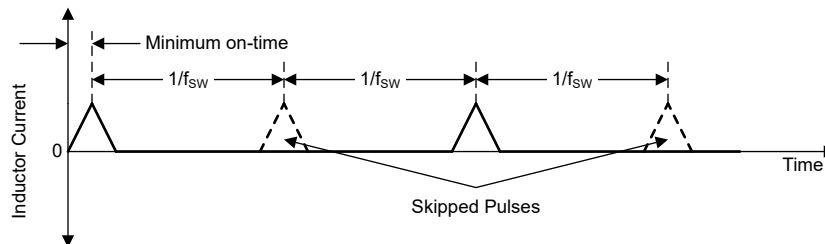
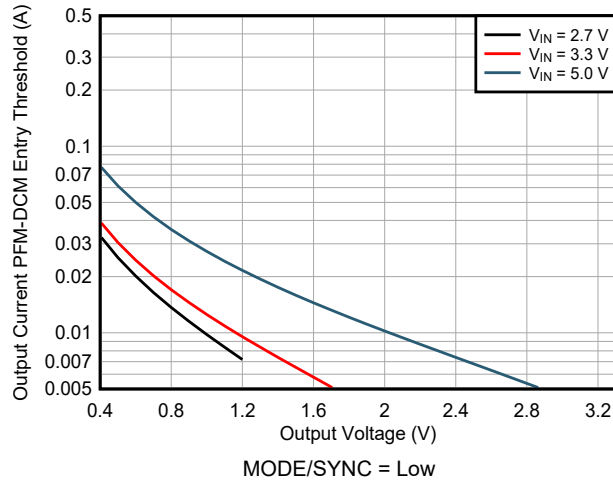


Figure 8-4. Discontinuous Conduction Mode (PFM-DCM) Current Waveform

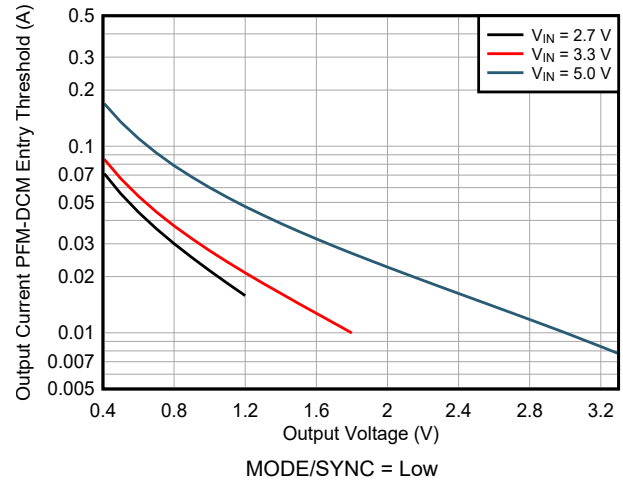
Equation 3 is used to calculate the output current threshold at which the device changes from PWM-DCM to PFM-DCM:

$$I_{OUT(PFM - entry)} = \frac{V_{IN} \times 20 \text{ ns}}{2} \times \frac{1 - \frac{V_{OUT}}{V_{IN}}}{L} \quad (3)$$

Figure 8-5 through Figure 8-7 show how the PWM-DCM to PFM-DCM threshold typically varies with V_{IN} and V_{OUT} .



**Figure 8-5. PFM-DCM Entry Threshold
TPSM8287A06BAS**



**Figure 8-6. PFM-DCM Entry Threshold
TPSM8287A12BAS**

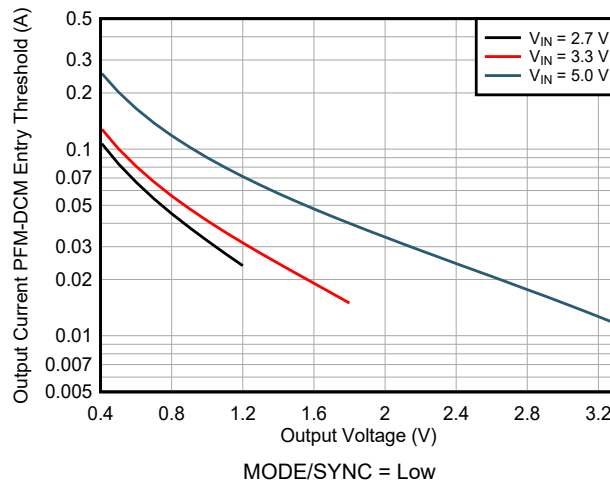


Figure 8-7. PFM-DCM Entry Threshold TPSM8287A12BBS

Configure the device to use either Forced-PWM Mode (FPWM) or Power-Save Mode (PSM):

- In Forced-PWM mode, the device uses PWM-CCM at all times
- In Power-Save Mode, the device uses PWM-CCM at medium and high loads, PWM-DCM at light loads, and PFM-DCM at very light loads. Transitions between the different operating modes are seamless.

Table 8-1 shows the function table of the MODE/SYNC pin and the FPWMEN bit in the CONTROL1 register, which controls the operating mode of the device.

Table 8-1. FPWM Mode and Power-Save Mode Selection

SSCEN Bit	FPWMEN Bit	MODE/SYNC Pin	OPERATING MODE	REMARK
0	0	Low	PSM	Do not use in a stacked configuration
1	0	Low	PSM	
0	1	X	FPWM	see Section 8.3.8
0	X	High	FPWM	
X	X	Sync Clock	FPWM	

Table 8-1. FPWM Mode and Power-Save Mode Selection (continued)

SSCEN Bit	FPWMEN Bit	MODE/SYNC Pin	OPERATING MODE	REMARK
1	1	X	FPWM	see Section 8.3.9
1	X	High	FPWM	

8.3.3 Precise Enable

The Enable (EN) pin is bidirectional and has two functions. See [Figure 8-8](#):

- As an input, it enables and disables the DC/DC converter in the device
- In a stacked configuration, it is an output and provides a SYSTEM_READY signal to other devices.

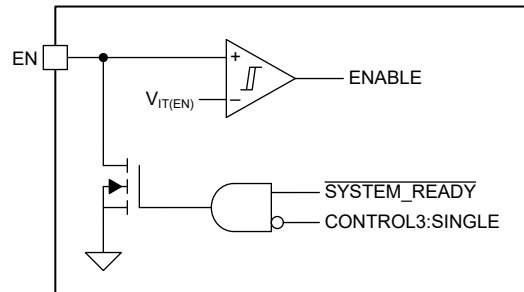


Figure 8-8. Enable Functional Block Diagram

Because there is an internal open-drain transistor connected to the EN pin, do not drive this pin directly from a low-impedance source. Instead, use a > 15-kOhm resistor to limit the current flowing into the EN pin.

When power is first applied to the VIN pin, the device pulls the EN pin low until it loads its default register settings from nonvolatile memory and reads the state of the VSETx and SYNC_OUT pins. The device also pulls EN low if a fault, such as thermal shutdown or overvoltage lockout, occurs. In a stacked configuration all devices share a common enable signal, which means that the DC/DC converters in the stack cannot start to switch until *all* devices in the stack have completed their initialization. Similarly, a fault in one or more devices in the stack disables *all* converters in the stack (see [Section 8.3.17](#)).

In standalone (non-stacked) applications, disable the active pulldown of the EN pin if setting SINGLE = 1 in the CONTROL3 register. Fault conditions have no effect on the EN pin when SINGLE = 1. (Note that the EN pin is *always* pulled down during device initialization.) In stacked applications, make sure that SINGLE = 0. Setting SINGLE = 1 also disables the SYNC_OUT pin, which reduces the quiescent current by about 200 μ A.

When the internal $\overline{\text{SYSTEM_READY}}$ signal is low (that is, initialization is complete and there are no fault conditions), the internal open-drain transistor is high impedance and the EN pin functions like a standard input: a high level on the EN pin enables the DC/DC converter in the device and a low level disables it. The I²C interface is enabled as soon as the device has completed its initialization and is not affected by the state of the internal ENABLE or $\overline{\text{SYSTEM_READY}}$ signals.

A low level on the EN pin forces the device into shutdown. During shutdown, the MOSFETs in the power stage are off, the internal control circuitry is disabled, and the device consumes less than 20 μ A (typical). Do not leave the EN pin floating.

The Precise Enable input provides a user-programmable undervoltage lockout by adding a resistor divider to the input of the EN pin. The Precise Enable input also allows the user to drive the pin by a slowly changing voltage and enables the use of an external RC network to achieve a precise power-up delay. See [Achieving a clean startup by using a DC/DC converter with a precise enable-pin threshold](#) analog design journal for more details.

8.3.4 Start-Up

When the voltage on the VIN pin exceeds the positive-going UVLO threshold, the device initializes as follows:

- The device pulls the EN pin low
- The device the internal reference voltage

- The device reads the state of the VSETx and SYNC_OUT pins
- The device loads the default values into the device registers

When initialization is complete, the device enables I²C communication and releases the EN pin. The external circuitry controlling the EN pin now determines the behavior of the device:

- If the EN pin is low, the device is disabled:
 - The user can write to and read from the device registers
 - The power stage does not operate (high-impedance).
- If the EN pin is high, the device is enabled:
 - The user can write to and read from the device registers
 - After a short delay, the power stage starts switching
 - The converter ramps up the output voltage

Figure 8-9 shows the start-up sequence when the EN pin is pulled up to V_{IN} through a resistor.

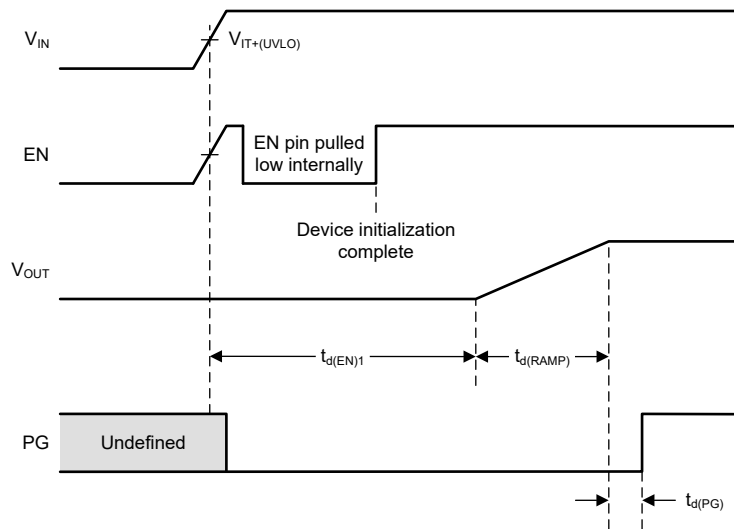


Figure 8-9. Start-Up Timing When EN is Pulled Up to V_{IN}

Figure 8-10 shows the start-up sequence when an external signal is connected to the EN pin.

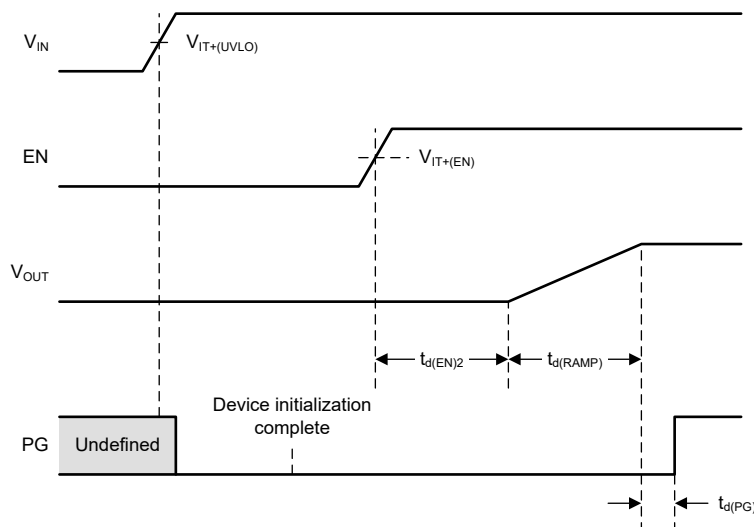


Figure 8-10. Start-Up Timing When an External Signal is Connected to the EN Pin

The SSTIME[1:0] bits in the CONTROL2 register select the duration of the soft-start ramp:

- $t_{d(RAMP)} = 500 \mu s$
- $t_{d(RAMP)} = 1 ms$ (default)
- $t_{d(RAMP)} = 2 ms$
- $t_{d(RAMP)} = 4 ms$

The device ignores new values during the soft-start sequence for the following parameters:

- Output voltage setpoint ($V_{OUT}[7:0]$)
- Output voltage range ($VRANGE[1:0]$)
- Soft-start time ($SSTIME[1:0]$)

If the user changes the value of $VSET[7:0]$ during soft start, the device first ramps to the value that $VSET[7:0]$ had when the soft-start sequence began. When soft start is complete, the device ramps up or down to the new value.

During start-up, the device does not sink current to ensure that the output voltage follows the configured ramp rate to the target output voltage. With this, the device can start up into a prebiased output. In this case, only a portion of the internal voltage ramp is seen externally (see [Figure 8-11](#)).

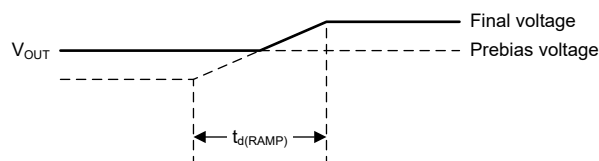


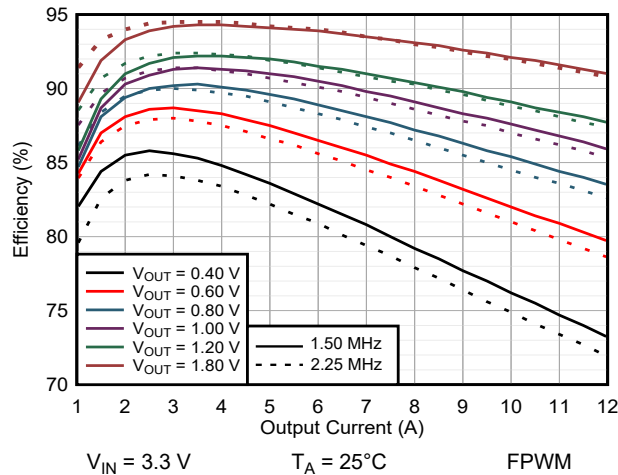
Figure 8-11. Start-Up into a Prebiased Output

8.3.5 Switching Frequency Selection

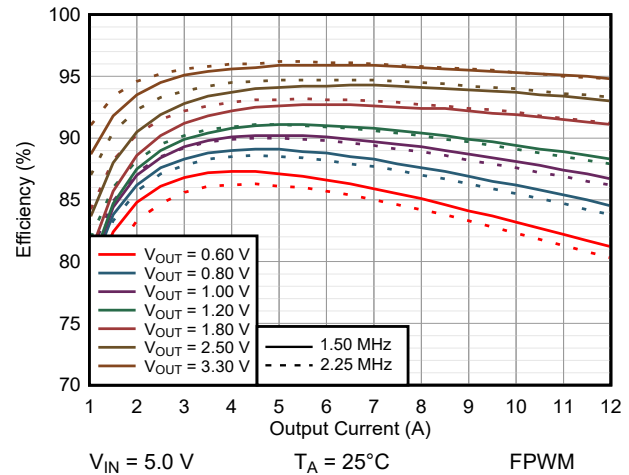
The TPSM8287Axx module family consists of device variants with different switching frequencies. For available options see [Table 5-1](#). The different switching frequencies allows the selection of the device which provides the best efficiency by optimizing the power losses for a given use case.

A lower switching frequency version does not necessarily offer a higher efficiency across the entire load, V_{in} or V_{out} range. The lower switching frequency does reduce the switching losses in the power stage, but at the same time leads to a higher ripple current in the inductor which leads to higher inductor losses, higher output voltage ripple, and a lower maximum output current (see [Section 8.3.13](#)). Because of this, TI recommends to compare the efficiency when picking a certain device variant.

[Figure 8-12](#) and [Figure 8-13](#) provide an efficiency comparison between the 1.5-MHz TPSM8287A12BAS and 2.25-MHz TPSM8287A12BBS. For output voltages $\geq 1.2 V$, the efficiency between the 2.25-MHz and 1.5-MHz device is almost the same for high load currents, whereas the 2.25-MHz version gives higher efficiency at load currents below 3 A. The 1.5MHz device generally gives higher efficiency for the other operating points, especially for lower output voltages. For output voltages $\geq 1.2 V$, TI recommends the 2.25-MHz device for most applications due to its comparable efficiency, lower output voltage ripple, and higher maximum output current.



**Figure 8-12. Efficiency Comparison
TPSM8287A12BAS vs TPSM8287A12BBS**



**Figure 8-13. Efficiency Comparison
TPSM8287A12BAS vs TPSM8287A12BBS**

8.3.6 Output Voltage Setting

8.3.6.1 Output Voltage Setpoint

During initialization, the device reads the state of the VSETx pins and selects the default output voltage according to [Table 8-2](#). Note that the VSETx pins also select the I²C target address of the device and the setting of the VRANGE bits located in register CONTROL1. The VSETx pins are only read during a power cycle of VIN or by setting RESET = 1 through the I²C interface. Changing their configuration after VIN is present does not affect the content of the registers or the I²C address. Ensure that there is no stray current path connected to the VSETx pins and that the parasitic capacitance between the VSETx pins and GND is less than 100 pF. For proper operation, the Input voltage needs to be at least 1.4 V above the selected output voltage.

Table 8-2. Start-Up Output Voltage and I²C Address

VSET3	VSET2	VSET1	I ² C ADDRESS	VRANGE [1:0]	VOUT VOLTAGE
GND	GND	VIN	0x40	0b10	0.45 V
GND	VIN	GND	0x40	0b10	0.50 V
GND	VIN	VIN	0x40	0b10	0.55 V
VIN	GND	GND	0x40	0b10	0.60 V
VIN	GND	VIN	0x40	0b10	0.65 V
VIN	VIN	GND	0x40	0b10	0.70 V
VIN	VIN	VIN	0x40 ¹	0b10	0.75 V
47 kΩ to GND	GND	GND	0x41 ¹	0b11	0.80 V
47 kΩ to GND	GND	VIN	0x41	0b11	0.85 V
47 kΩ to GND	VIN	GND	0x41	0b11	0.90 V
47 kΩ to GND	VIN	VIN	0x41	0b11	0.95 V
47 kΩ to VIN	GND	GND	0x41	0b11	1.00 V
47 kΩ to VIN	GND	VIN	0x41 ¹	0b11	1.05 V
47 kΩ to VIN	VIN	GND	0x41 ¹	0b11	1.10 V
47 kΩ to VIN	VIN	VIN	0x41	0b11	1.15 V
GND	47 kΩ to GND	GND	0x42 ¹	0b11	1.20 V
GND	47 kΩ to GND	VIN	0x42	0b11	1.25 V

Table 8-2. Start-Up Output Voltage and I²C Address (continued)

VSET3	VSET2	VSET1	I ² C ADDRESS	VRANGE [1:0]	VOUT VOLTAGE
GND	47 kΩ to VIN	GND	0x42	0b11	1.30 V
GND	47 kΩ to VIN	VIN	0x42	0b11	1.35 V
VIN	47 kΩ to GND	GND	0x42	0b11	1.40 V
VIN	47 kΩ to GND	VIN	0x42	0b11	1.45 V
VIN	47 kΩ to VIN	GND	0x42	0b11	1.50 V
VIN	47 kΩ to VIN	VIN	0x42	0b11	1.55 V
GND	GND	47 kΩ to GND	0x43	0b11	1.60 V
GND	GND	47 kΩ to VIN	0x43	0b11	1.65 V
GND	VIN	47 kΩ to GND	0x43	0b11	1.70 V
GND	VIN	47 kΩ to VIN	0x43	0b11	1.75 V
VIN	GND	47 kΩ to GND	0x43	0b11	1.80 V
VIN	GND	47 kΩ to VIN	0x43	0b11	1.85 V
VIN	VIN	47 kΩ to GND	0x43	0b11	1.90 V
VIN	VIN	47 kΩ to VIN	0x43	0b11	1.95 V
47 kΩ to GND	47 kΩ to GND	GND	0x40	0b11	2.00 V
47 kΩ to GND	47 kΩ to GND	VIN	0x40	0b11	2.05 V
47 kΩ to GND	47 kΩ to VIN	GND	0x40	0b11	2.10 V
47 kΩ to GND	47 kΩ to VIN	VIN	0x40	0b11	2.15 V
47 kΩ to VIN	47 kΩ to GND	GND	0x40	0b11	2.20 V
47 kΩ to VIN	47 kΩ to GND	VIN	0x40	0b11	2.25 V
47 kΩ to VIN	47 kΩ to VIN	GND	0x40	0b11	2.30 V
47 kΩ to VIN	47 kΩ to VIN	VIN	0x40	0b11	2.35 V
47 kΩ to GND	GND	47 kΩ to GND	0x41	0b11	2.40 V
47 kΩ to GND	GND	47 kΩ to VIN	0x41	0b11	2.45 V
47 kΩ to GND	VIN	47 kΩ to GND	0x41	0b11	2.50 V
47 kΩ to GND	VIN	47 kΩ to VIN	0x41	0b11	2.55 V
47 kΩ to VIN	GND	47 kΩ to GND	0x41	0b11	2.60 V
47 kΩ to VIN	GND	47 kΩ to VIN	0x41	0b11	2.65 V
47 kΩ to VIN	VIN	47 kΩ to GND	0x41	0b11	2.70 V
47 kΩ to VIN	VIN	47 kΩ to VIN	0x41	0b11	2.75 V
GND	47 kΩ to GND	47 kΩ to GND	0x42	0b11	2.80 V
GND	47 kΩ to GND	47 kΩ to VIN	0x42	0b11	2.85 V
GND	47 kΩ to VIN	47 kΩ to GND	0x42	0b11	2.90 V
GND	47 kΩ to VIN	47 kΩ to VIN	0x42	0b11	2.95 V
VIN	47 kΩ to GND	47 kΩ to GND	0x42	0b11	3.00 V
VIN	47 kΩ to GND	47 kΩ to VIN	0x42	0b11	3.05 V
VIN	47 kΩ to VIN	47 kΩ to GND	0x42	0b11	3.10 V
VIN	47 kΩ to VIN	47 kΩ to VIN	0x42	0b11	3.15 V

Table 8-2. Start-Up Output Voltage and I²C Address (continued)

VSET3	VSET2	VSET1	I ² C ADDRESS	VRANGE [1:0]	VOUT VOLTAGE
47 kΩ to GND	47 kΩ to GND	47 kΩ to GND	0x43	0b11	3.20 V
47 kΩ to GND	47 kΩ to GND	47 kΩ to VIN	0x43	0b11	3.25 V
47 kΩ to GND	47 kΩ to VIN	47 kΩ to GND	0x43	0b11	3.30 V
47 kΩ to GND	47 kΩ to VIN	47 kΩ to VIN	0x43	0b11	3.35 V
47 kΩ to VIN	47 kΩ to GND	47 kΩ to GND	0x44	0b10	0.75 V
GND	GND	GND	0x40	0b11	0.80 V
47 kΩ to VIN	47 kΩ to GND	47 kΩ to VIN	0x44	0b11	1.05 V
47 kΩ to VIN	47 kΩ to VIN	47 kΩ to GND	0x44	0b11	1.10 V
47 kΩ to VIN	47 kΩ to VIN	47 kΩ to VIN	0x44	0b11	1.20 V

(1) A second I²C address for the same output voltage is found at the bottom of this table

During start-up, the output voltage ramps up to the target value set by the VSETx pins before ramping up or down to any new value programmed to the device over the I²C interface. If the user programs new output voltage setpoints (VOUT[7:0]), output voltage range (VRANGE[1:0]), or soft-start time (SSTIME[1:0]) settings when the device has already begun its soft-start sequence, the device ignores the new values until the soft-start sequence is complete. When changing VOUT[7:0], VRAMP[1:0], or SSTIME[1:0] while EN is low, the device uses the new values the next time it is enabled.

8.3.6.2 Output Voltage Range

The device has four different output voltage ranges. The VRANGE[1:0] bits in the CONTROL1 register control which range is active (see Table 8-3). The default output voltage range is determined by the VSETx pins.

Table 8-3. Voltage Ranges

VRANGE[1:0]	Voltage Range
0b00	0.4 V to 0.71875 V in 1.25-mV steps
0b01	0.4 V to 1.0375 V in 2.5-mV steps
0b10	0.4 V to 1.675 V in 5-mV steps
0b11	0.8 V to 3.35 V in 10-mV steps

Every change to the VRANGE[1:0] bits must be followed by a write to the VSET register – even if the value of the VSET[7:0] bits does not change. This sequence is necessary for the device to start to use the new voltage range.

When switching to or from the 0.8-V to 3.35-V range, the device switches its internal reference between 0.4 V and 0.8 V. To avoid any output voltage over or undershoot that can occur during the change, the VRANGE change must be done at an output voltage that occurs in both the new range and old range and the VSET[7:0] bits must set the same output voltage in both the new range and old range.

8.3.6.3 Non-Default Output Voltage Setpoint

If none of the output voltage setpoints in Table 8-2 are suitable for the application, the user can change the output voltage through I²C *before enabling* the device. After the EN pin is pulled high, the device starts up and ramps to the desired output voltage set in the VSET register. A change of the device settings through I²C while the device is ramping are only be performed after the initial ramp is completed.

8.3.6.4 Dynamic Voltage Scaling (DVS)

If the user changes the output voltage setpoint while the device is operating, the device ramps up or down to the new voltage setting in a controlled way.

The VRAMP[1:0] bits in the CONTROL1 register set the slew rate when the device ramps from one voltage to another during DVS (see Table 8-4). The ramp rate is independent of the setting of the VRANGE[1:0] bits.

Table 8-4. Dynamic Voltage Scaling Slew Rate

VRAMP[1:0]	DVS Slew Rate
0b00	10 mV/μs
0b01	5 mV/μs
0b10 (default)	1.25 mV/μs
0b11	0.5 mV/μs

If the MODE/SYNC pin is low and FPWMEN = 0, the slew rate can be less at low output currents because the device does not actively transfer energy back from the output capacitor to the input. At higher load currents the device controls the slew rate by transferring energy to the output.

Note that ramping the output to a higher voltage requires additional output current, so that during DVS the converter must generate a total output current given by:

$$I_{OUT} = I_{OUT(DC)} + C_{OUT} \frac{dV_{OUT}}{dt} \quad (4)$$

where:

- I_{OUT} is the total current the converter must generate while ramping to a higher voltage
- $I_{OUT(DC)}$ is the DC load current
- C_{OUT} is the total output capacitance
- dV_{OUT}/dt is the slew rate of the output voltage (programmable in the range 0.5 mV/μs to 10 mV/μs)

For correct operation, make sure that the total output current during DVS does not exceed the rated current of the device.

8.3.7 Compensation (COMP)

The COMP pin is the connection point for an external compensation network. A series-connected resistor and capacitor to GOSNS is sufficient for typical applications and provides enough scope to optimize the loop response for a wide range of operating conditions.

When using multiple devices in a stacked configuration, all devices share a common compensation network, and the COMP pin ensures equal current sharing between them (see [Section 8.3.17](#)).

8.3.8 Mode Selection / Clock Synchronization (MODE/SYNC)

A high level on the MODE/SYNC pin selects forced-PWM operation. A low level on the MODE/SYNC pin selects power-save operation, in which the device automatically transitions between PWM and PFM according to the load conditions.

If applying a valid clock signal to the MODE/SYNC pin, the device synchronizes the switching cycles to the external clock and automatically selects forced-PWM operation. When applying a frequency modulated clock to the MODE/SYNC pin, the device also follows this. This action can be useful in applications where the converter must follow an external Spread Spectrum Modulation.

The MODE/SYNC pin is logically ORed with the FPWMEN bit in the [CONTROL1](#) register. Setting either high enables FPWM (see [Section 8.3.2](#)).

When multiple devices are used in a stacked / parallel configuration to increase the output current, the clock signal from the primary device must cascade through all devices in a daisy chain configuration. The SYNC_OUT pin of the previous device must connect to the MODE/SYNC pin of the next device in the chain (see [Section 8.3.17](#)).

8.3.9 Spread Spectrum Clocking (SSC)

The device has a spread spectrum clocking function which can reduce electromagnetic interference (EMI). When the SSC function is active, the device modulates the switching frequency to approximately ±10% around the nominal value. The frequency modulation has a triangular characteristic (see [Figure 8-14](#)).

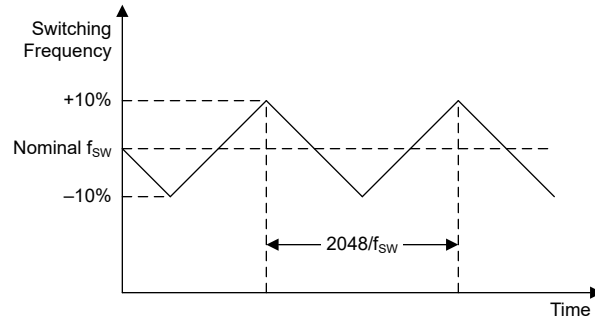


Figure 8-14. Spread Spectrum Clocking Behavior

To use the SSC function, make sure that:

- SSCEN = 1 in the CONTROL1 register
- The device is not synchronized to an external clock

TI recommends to use FPWM operation when using SSC, but SSC is available with PSM operation. To disable the SSC function, make sure that SSCEN = 0 in the CONTROL1 register.

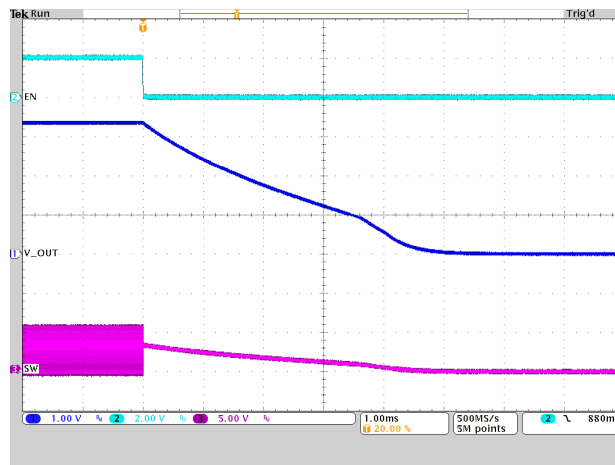
8.3.10 Output Discharge

The device has an output discharge function which ensures a defined ramp down of the output voltage when the device is disabled. The discharge stays on after the output is discharged. The output discharge function is enabled when DISCHEN = 1 in the CONTROL1 register.

If output discharge is enabled, the device discharges the output under the following conditions:

- A low level is applied to the EN pin
- SWEN = 0 in the CONTROL1 register
- A thermal shutdown event occurs
- An UVLO event occurs
- An OVLO event occurs

When the output voltage is above 900 mV (typical), the discharge is about 115 mA. Below 900 mV, the discharge is about 3.5 Ohm. [Figure 8-15](#) shows an example of the typical discharge behavior.



$V_{IN} = 5.0\text{ V}$

$I_{OUT} = 0\text{ mA}$

$V_{OUT} = 3.3\text{ V}$ discharge to 0 V

Figure 8-15. Output Discharge

The output discharge function is not available until the device has been enabled at least once after applying VIN. The output discharge functions until VIN drops to around 1.8 V.

In a stacked configuration, the discharge is always active in the secondary devices. Please refer to [Table 8-6](#).

8.3.11 Undervoltage Lockout (UVLO)

The device has an undervoltage lockout function which disables the device if the supply voltage is too low for correct operation. The negative-going threshold of the UVLO function is 2.5 V (typical). If the supply voltage decreases below this value, the device stops switching and, if DISCHEN = 1 in the CONTROL1 register, turns on the output discharge. In addition, the EN pin is pulled low, which disables all other devices in the stack.

The device automatically starts switching again – it begins a new soft-start sequence – when the supply voltage is higher than 2.6 V (typical).

8.3.12 Overvoltage Lockout (OVLO)

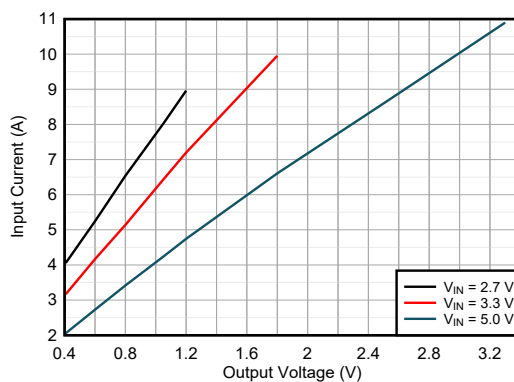
The device has an overvoltage lockout function that disables the DC/DC converter if the supply voltage is too high for correct operation. The positive-going threshold of the OVLO function is 6.3 V (typical). If the supply voltage increases above this value, the device stops switching and, if DISCHEN = 1 in the CONTROL1 register, turns on the output discharge. In addition, the EN pin is pulled low, which disables all other devices in the stack.

The device automatically starts switching again – it begins a new soft-start sequence – when the supply voltage falls below 6.2 V (typical).

8.3.13 Overcurrent Protection

8.3.13.1 Cycle-by-Cycle Current Limiting

The TPSM8287Axx module is protected against overload and short circuit events. If the inductor current exceeds the high-side current limit, the high-side MOSFET is turned off and the low-side MOSFET is turned on to ramp down the inductor current. The high-side MOSFET turns on again only if the current in the low-side MOSFET has decreased below the low-side current limit. These current limits are designed to prevent the inductor of going into saturation. [Figure 8-16](#) shows the typical input current in current limit.



$T_A = 25^\circ\text{C}$

HICCUP = 0

Figure 8-16. TPSM8287A12BBS Typical Input Current in Current Limit

The low-side MOSFET also contains a negative current limit to prevent excessive current from flowing back through the inductor to the input. If the low-side sinking current limit is exceeded, the low-side MOSFET is turned off. In this scenario, both MOSFETs are off until the start of the next cycle. The negative current limit is only active in Forced PWM mode.

8.3.13.2 Hiccup Mode

Hiccup mode reduces the power dissipation during an overload event. To enable hiccup operation, make sure that HICCUPEN = 1 in the CONTROL1 register. If hiccup operation is enabled and the high-side switch current hits the high-side current limit threshold on 32 consecutive switching cycles, the device:

- Stops switching for 128 μs , after which the device automatically starts switching again (it starts a new soft-start sequence)

- Sets the HICCUP bit in the STATUS register
- Pulls the PG pin low. The PG pin stays low until the overload condition goes away and the device can start up and regulate the output voltage.

Hiccup operation continues – in a repeating sequence of 32 cycles in current limit, followed by a pause of 128 μ s, followed by a soft-start attempt – for as long as the output overload condition exists.

The device clears the HICCUP bit if reading the STATUS register when the overload condition no longer exists. [Figure 8-17](#) shows 2 cycles of hiccup operation, at which point the over load is removed and the part continues in normal operation.

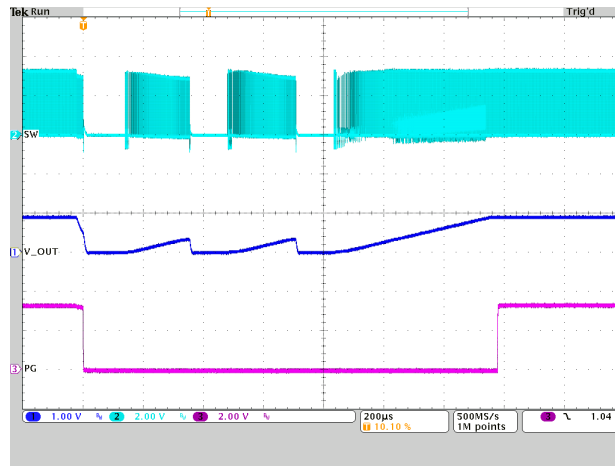


Figure 8-17. Hiccup Current Limit

8.3.13.3 Current-Limit Mode

To enable current-limit mode, make sure that HICCUPEN = 0 in the CONTROL1 register.

When current limit operation is enabled, the device limits the high-side switch current cycle-by-cycle for as long as the overload condition exists. If the device limits the high-side switch current for four or more consecutive switching cycles, it sets ILIM = 1 in the STATUS register.

The device clears the ILIM bit if the user reads the STATUS register after the overload condition no longer exists.

8.3.14 Power Good (PG)

The Power-Good (PG) pin is bidirectional and has two functions:

- In a standalone configuration, and in the primary device of a stacked configuration, the PG pin is an open-drain output that indicates the status of the converter or stack.
- In a secondary device of a stacked configuration, the PG pin is an input that detects when the soft-start sequence is complete.

8.3.14.1 Power-Good Standalone, Primary Device Behavior

The primary purpose of the PG pin is to indicate if the output voltage is in regulation, but it also indicates if the device is in thermal shutdown or disabled. [Table 8-5](#) summarizes the behavior of the PG pin in a stand-alone or primary device.

Table 8-5. Power-Good Function Table

V_{IN}	EN	V_{OUT}	Soft Start	PGBLNKDVS	T_J	PG
$V_{IN} < 2\text{ V}$	X	X	X	X	X	Undefined
$V_{IT(UVLO)} \geq V_{IN} \geq 2\text{ V}$	X	X	X	X	X	Low

Table 8-5. Power-Good Function Table (continued)

V_{IN}	EN	V_{OUT}	Soft Start	PGBLNDVS	T_J	PG
$V_{IT-(OVLO)} > V_{IN} > V_{IT+(UVLO)}$	L	X	X	X	X	Low
	H	X	Active	X	X	Low
		$V_{OUT} > V_{T+(OVP)}$ or $V_{OUT} < V_{T-(UVP)}$	Inactive	0	X	Low
				1 (DVS inactive)	X	Low
		X		1 (DVS active)	$T_J < T_{SD}$	Hi-Z
		$V_{T-(OVP)} > V_{OUT} > V_{T+(UVP)}$		X		Hi-Z
		X	X	X	$T_J > T_{SD}$	Low
$V_{IN} > V_{IT+(OVLO)}$	X	X	X	X	X	Low

Figure 8-19 shows a functional block diagram of the power-good function in a stand-alone or primary device. A window comparator monitors the output voltage, and the output of the comparator goes high if the output voltage is either less than 94% (typical) or greater than 106% (typical) of the nominal output voltage. The output of the window comparator is deglitched – the typical deglitch time is 40 μ s (see Figure 8-18) – and then used to drive the open-drain PG pin.

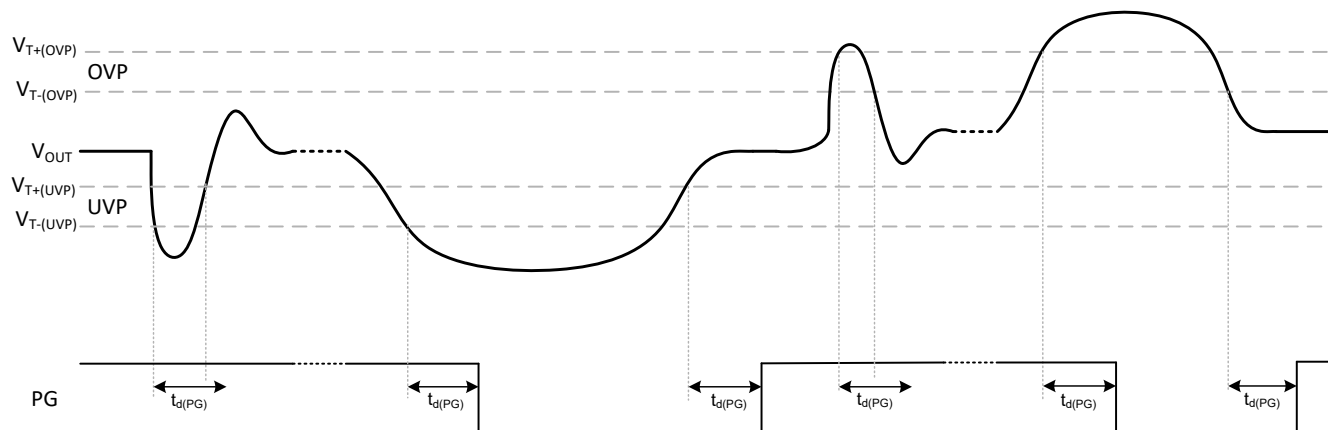


Figure 8-18. Power-Good Transient and Delay Behavior

If an output under or overvoltage event occurs, the device sets the PBUV or PBOV bits in the STATUS register, respectively. The device clears the PBOV and PBUV bits if the user reads the STATUS register after the power-bad condition no longer exists.

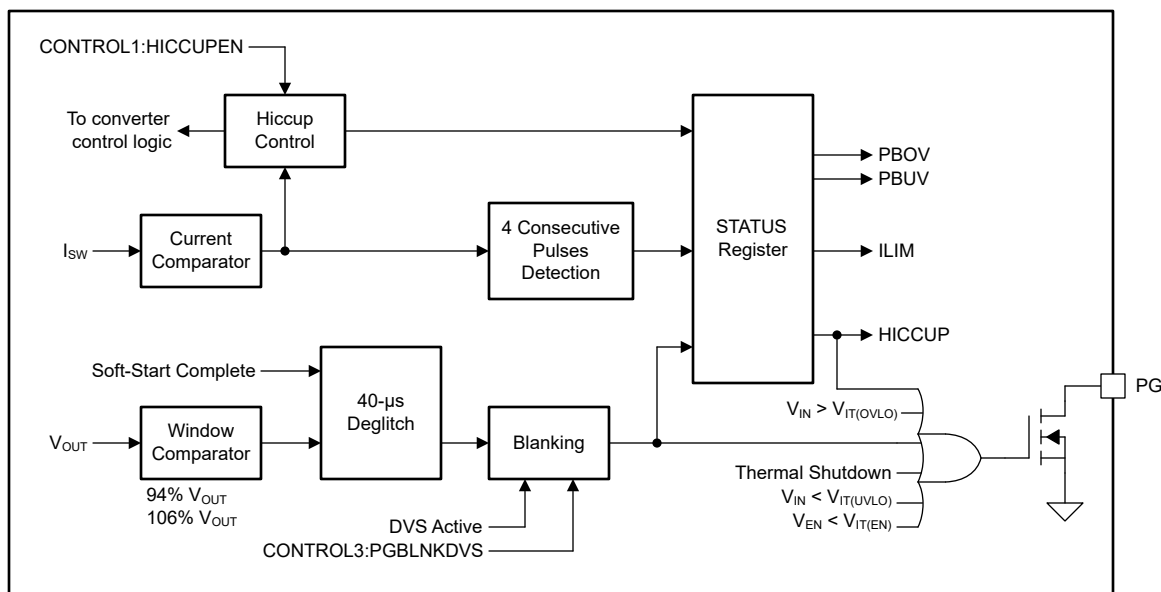


Figure 8-19. Power-Good Functional Block Diagram (Stand-Alone / Primary Device)

During DVS activity, when the device transitions from one output voltage setting to another, the output voltage can temporarily exceed the limits of the window comparator and pull the PG pin low. The device has a feature to disable this behavior: if PGBLNKDVS = 1 in the CONTROL3 register, the device ignores the output of the power-good window comparator while DVS is active.

Note that the PG pin is always low – regardless of the output of the window comparator – when:

- The device is in thermal shutdown
- The device is in Hiccup mode
- The device is disabled
- The device is in undervoltage or overvoltage lockout (UVLO or OVLO)
- The device is in soft start

8.3.14.2 Power-Good Secondary Device Behavior

In a stacked, parallel configuration, the PG signal is used to communicate between the devices. During device initialization, all devices in the stack pull the PG signal low. After each device completes its initialization, only the Primary device controls the PG signal and holds it low until soft start is completed.

The Secondary devices monitor the voltage level of the PG signal. When the PG signal is low, the secondary devices can not sink current until the primary device releases the PG signal. The external pullup resistor pulls PG high and the secondary devices operate in FPWM from that point onwards.

In case of a fault condition, the secondary device does not drive the PG signal but uses the EN pin to deactivate the whole stack. In this case, the Primary converter pulls the PG signal low. For details, see [Table 8-6](#).

8.3.15 Remote Sense

The device has two pins, VOSNS and GOSNS, to remotely sense the output voltage. Remote sensing lets the converter sense the output voltage directly at the point-of-load and increases the accuracy of the output voltage regulation. These sense lines must be routed in parallel and away from noisy signals. Connect them to the lowest impedance point on the output bus, which must be the center of the output capacitor bank closest to the load.

In a stacked configuration, VOSNS and GOSNS of the primary and all secondary devices must be connected. For further details please see [Section 8.3.17](#).

8.3.16 Thermal Warning and Shutdown

The device has a two-level overtemperature detection function.

If the junction temperature rises above the thermal warning threshold of 150 °C (typical), the device sets the TWARN bit in the STATUS register. The device clears the TWARN bit if the STATUS register is read after the junction temperature fell below the TWARN threshold of 130 °C (typical).

If the junction temperature rises above the thermal shutdown threshold of 170 °C (typical), the device:

- Stops switching
- Pulls down the EN pin (if SINGLE = 0 in the CONTROL3 register)
- Enables the output discharge (if DISCHEN = 1 in the CONTROL1 register)
- Sets the TSHUT bit in the STATUS register
- Pulls the PG pin low

If the junction temperature then falls below the thermal shutdown threshold of 150 °C (typical), the device:

- Starts switching again, starting with a new soft-start sequence
- Releases the EN pin (high impedance)
- Releases the PG pin (high-impedance)

The device clears the TSHUT bit if the user reads the STATUS register after the junction temperature fell below the TSHUT threshold of 150 °C (typical).

In a stacked configuration, in which all devices share a common enable signal, a thermal shutdown condition in one device disables the entire stack. When the hot device cools down, the whole stack automatically starts switching again.

8.3.17 Stacked Operation

The user can connect multiple devices in parallel in what is known as a "stack" to increase output current capability, to reduce device junction temperature or the output voltage ripple. For example, paralleling four 15-A devices can provide up to 60 A of current. More devices can be stacked, as long as the PCB layout maintains the integrity of the shared signals between the modules.

A stack comprises one *primary* device and one or more *secondary* devices. During initialization, each device monitors its SYNC_OUT pin to determine if it must operate as a primary device or a secondary device:

- If there is a 47-kΩ resistor between the SYNC_OUT pin and ground, the device operates as a secondary device.
- If the SYNC_OUT pin is high impedance, the device operates as a primary device.

Figure 8-20 shows the recommended interconnections in a stack of two TPSM8287Axx devices.

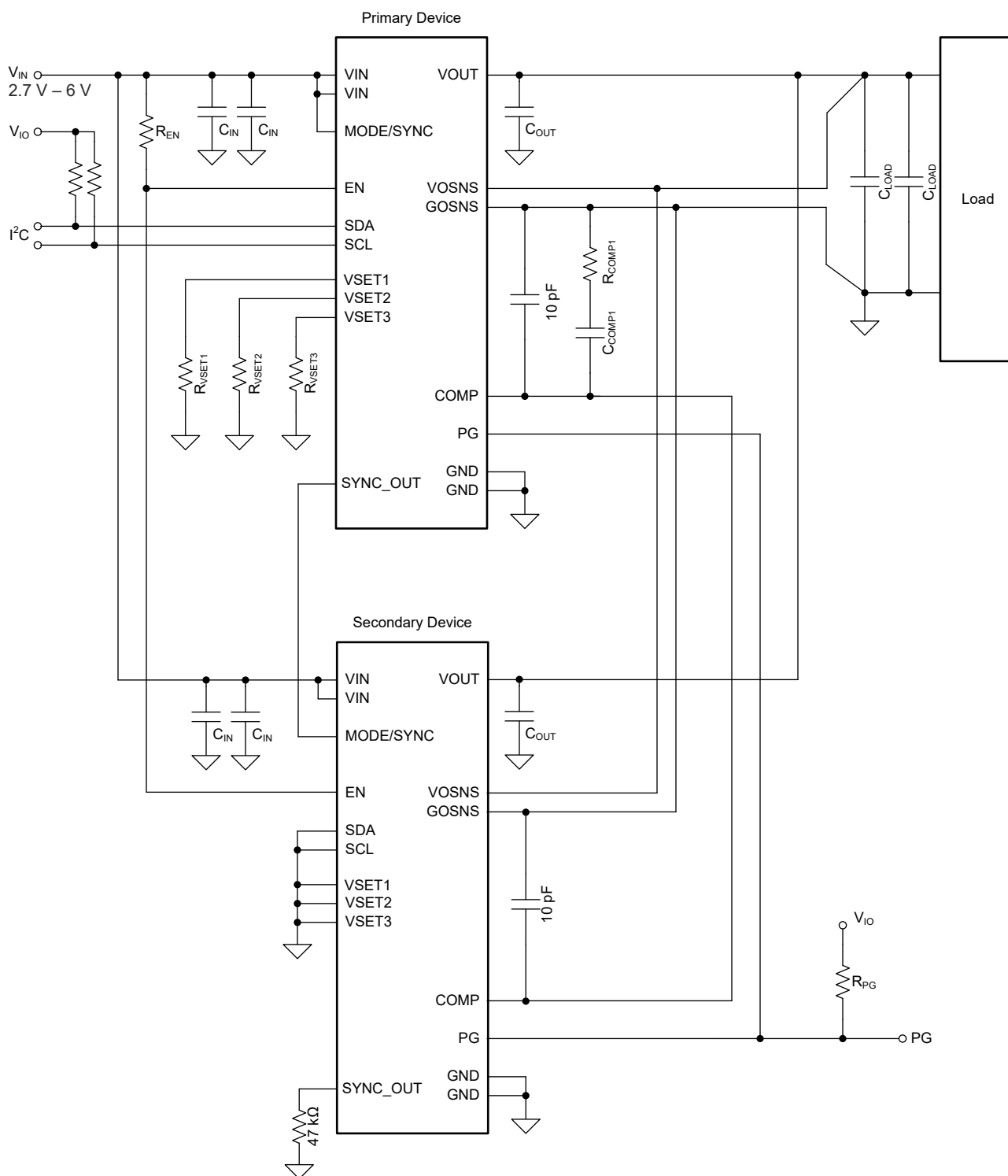


Figure 8-20. Two TPSM8287Axx Devices in a Stacked Configuration

The key points to note are:

- All the devices in the stack share a common enable signal, which must be pulled up with a resistance of at least 15 kΩ.
- All secondary devices must connect a 47-kΩ resistor between the SYNC_OUT pin and ground.
- All the devices in the stack share a common power-good signal, which must be pulled up with a resistor to a logic high level.

- All the devices in the stack share a common compensation signal.
- The remote sense pins (VOSNS and GOSNS) of *each device* must be connected (do not leave these pins floating).
- The same device part number (with the same frequency and output current) must be used for all devices in the stack.
- The primary device must be configured for forced-PWM operation (secondary devices are automatically configured for forced-PWM operation).
- A stacked configuration can support synchronization to an external clock or spread-spectrum clocking.
- Only the VSETx pins of the primary device are used to set the default output voltage. The VSETx pins of secondary devices are not used and must be connected to ground.
- The SDA and SCL pins of secondary devices are not used and must be connected to ground.
- A stacked configuration uses a daisy-chained clocking signal, in which each device switches with a phase offset of approximately 140° relative to the previous device in the daisy-chain. To daisy-chain the clocking signal, connect the SYNC_OUT pin of the primary device to the MODE/SYNC pin of the first secondary device. Connect the SYNC_OUT pin of the first secondary device to the MODE/SYNC pin of the second secondary device. Continue this connection scheme for all devices in the stack to daisy-chain them together.
- Hiccup overcurrent protection must not be used in a stacked configuration.
- For output voltages $\geq 1.2\text{V}$, reduce the maximum output current per phase by 1A to account for current balancing inaccuracy.

In a stacked configuration, the common enable signal also acts as a SYSTEM_READY signal (see [Section 8.3.3](#)). Each device in the stack can pull its EN pin low during device start-up or when a fault occurs. Thus, the stack is only enabled when all devices have completed their start-up sequence and are fault-free. A fault in any one device disables the whole stack for as long as the fault condition exists.

During start-up, the primary converter pulls the COMP pin low for as long as the enable signal (SYSTEM_READY) is low. When the enable signal goes high, the primary device actively controls the COMP pin and all converters in the stack follow the COMP voltage. During start-up, each device in the stack pulls its PG pin low while it initializes. When initialization is complete, each secondary device in the stack sets its PG pin to high impedance and the primary device alone controls the state of the PG signal. The PG pin goes high when the stack has completed its start-up ramp and the output voltage is within the power good window. The secondary converters in the stack detect the rising edge of the power-good signal and switch to FPWM operation. After the stack has successfully started up, the primary device controls the power-good signal in the normal way. In a stacked configuration, there are some faults that only affect individual devices, and other faults that affect all devices. For example, if one device enters current limit, only that device is affected. But a thermal shutdown or undervoltage lockout event in one device disables all devices through the shared enable (SYSTEM_READY) signal. For details refer to [Table 8-7](#).

Functionality During Stacked Operation

Some device features are not available during stacked operation, or are only available in the primary converter. [Table 8-6](#) summarizes the available functionality during stacked operation.

Table 8-6. Functionality During Stacked Operation

Function	Primary Device	Secondary Device	Remark
UVLO	Yes	Yes	Common enable signal
OVLO	Yes	Yes	Common enable signal
OCP – Current Limit	Yes	Yes	Individual device
OCP – Hiccup OCP	No	No	Do not use during stacked operation
Thermal Shutdown	Yes	Yes	Common enable signal
Power Good (Window Comparator)	Yes	No	Primary device only
I ² C Interface	Yes	No	Primary device only
DVS	Through I ² C	No	Voltage loop controlled by primary device only

Table 8-6. Functionality During Stacked Operation (continued)

Function	Primary Device	Secondary Device	Remark
SSC	Through I ² C	Yes, through primary device	Daisy-chained from primary device to secondary devices
SYNC	Yes	Yes, through primary device	Synchronization clock applied to primary device and daisy-chained from primary device to secondary devices
Precise Enable	No	No	Only binary enable
Output Discharge	Through I ² C	Yes	Always enabled in secondary devices

Fault Handling During Stacked Operation

In a stacked configuration, there are some faults that only affect individual devices, and other faults that affect all devices. For example, if one device enters current limit, only that device is affected. But a thermal shutdown or undervoltage lockout event in one device disables all devices through the shared enable (SYSTEM_READY) signal. [Table 8-7](#) summarizes the fault handling during stacked operation.

Table 8-7. Fault Handling During Stacked Operation

Fault Condition	Device Response	System Response
UVLO	Enable signal pulled low	New soft start
OVLO		
Thermal Shutdown		
Current Limit	Enable signal remains high	Error amplifier clamped

8.4 Device Functional Modes

8.4.1 Power-On Reset (POR)

The device operates in POR mode when the supply voltage is less than the POR threshold (V_{POR-}).

In POR mode, no functions are available and the device resets its registers to their default values.

The device leaves POR mode and enters UVLO mode when the supply voltage increases above the POR threshold.

8.4.2 Undervoltage Lockout

The device operates in UVLO mode when the supply voltage is between the POR and UVLO thresholds.

If the device enters UVLO mode from POR mode, no functions are available. If the device enters UVLO mode from Standby mode, the output discharge function is available. The I²C interface is not available in UVLO mode.

The device leaves UVLO mode and enters POR mode when the supply voltage decreases below the POR threshold. The device leaves UVLO mode and enters Standby mode when the supply voltage increases above the UVLO threshold.

8.4.3 Standby

The device operates in Standby mode when the supply voltage is greater than the UVLO threshold and any of the following conditions is true:

- A low level is applied to the EN pin
- SWEN = 0 in the CONTROL1 register
- The device junction temperature is greater than the thermal shutdown threshold
- The supply voltage is greater than the OVLO threshold
- The device is initializing

The following functions are available in Standby mode:

- I²C Interface
- Output discharge
- Power-good

The device leaves Standby mode and enters UVLO mode when the supply voltage decreases below the UVLO threshold. The device leaves Standby mode and enters On mode when all of the following conditions are true:

- A high-level is applied to the EN pin
- SWEN = 1 in the CONTROL1 register
- The device junction temperature is below the thermal shutdown threshold
- The supply voltage is below the OVLO threshold

8.4.4 On

The device operates in On mode when the supply voltage is greater than the UVLO threshold and all of the following conditions are true:

- A high-level is applied to the EN pin
- SWEN = 1 in the CONTROL1 register
- The device junction temperature is below the thermal shutdown threshold
- The supply voltage is below the OVLO threshold

All functions are available in On mode.

The device leaves On mode and enters UVLO mode when the supply voltage decreases below the UVLO threshold. The device leaves On mode and enters the Standby mode when any of the following conditions is true:

- A low level is applied to the EN pin
- SWEN = 0 in the CONTROL1 register
- The device junction temperature is greater than the thermal shutdown threshold
- The supply voltage is greater than the OVLO threshold

8.5 Programming

8.5.1 Serial Interface Description

I²C is a 2-wire serial interface developed by Philips Semiconductor, now NXP Semiconductors (see I²C-Bus Specification and User Manual, Revision 6, 4 April 2014). The bus consists of a data line (SDA) and a clock line (SCL) with pullup structures. When the bus is *idle*, both SDA and SCL lines are pulled high. All I²C-compatible devices connect to the I²C bus through open drain I/O pins, SDA and SCL. A *controller*, usually a microcontroller or a digital signal processor, controls the bus. The controller is responsible for generating the SCL signal and device addresses. The controller also generates specific conditions that indicate the START and STOP of data transfer. A *target* receives and transmits data on the bus under control of the controller.

The TPSM8287Axx device operates as a target and supports the following data transfer *modes*, as defined in the I²C-Bus Specification: standard mode (100 kbps), fast mode (400 kbps), and fast mode plus (1 Mbps). The interface adds flexibility to the power supply solution, enabling most functions to be programmed to new values depending on the instantaneous application requirements. Register contents remain intact as long as the input voltage remains above V_{POR}.

The data transfer protocol for standard and fast modes is exactly the same, therefore they are referred to as F/S-mode in this document. The device supports 7-bit addressing; general call addresses are not supported.

The state of the VSETx pins during power-up defines the I²C target address of the device (see [Table 8-2](#)).

TI recommends that the I²C controller initiates a STOP condition on the I²C bus after the initial power up of the SDA and SCL pullup voltages to ensure a reset of the I²C engine.

8.5.2 Standard-, Fast-, Fast-Mode Plus Protocol

The controller initiates a data transfer by generating a start condition. The start condition is when a high-to-low transition occurs on the SDA line while SCL is high, as shown in [Figure 8-21](#). All I²C-compatible devices must recognize a start condition.

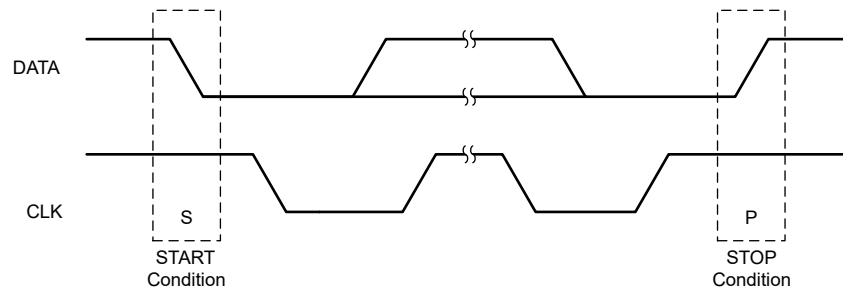


Figure 8-21. START and STOP Conditions

The controller then generates the SCL pulses, and transmits the 7-bit address and the read/write direction bit R/\overline{W} on the SDA line. During all transmissions, the controller ensures that data is valid. A valid data condition requires the SDA line to be stable during the entire high period of the clock pulse (see Figure 8-22). All devices recognize the address sent by the controller and compare it to their internal fixed addresses. Only the target with a matching address generates an acknowledge (see Figure 8-23) by pulling the SDA line low during the entire high period of the ninth SCL cycle. Upon detecting this acknowledge, the controller knows that communication link with a target has been established.

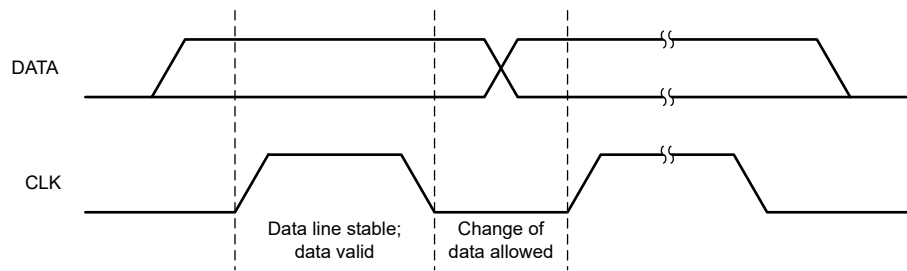


Figure 8-22. Bit Transfer on the Serial Interface

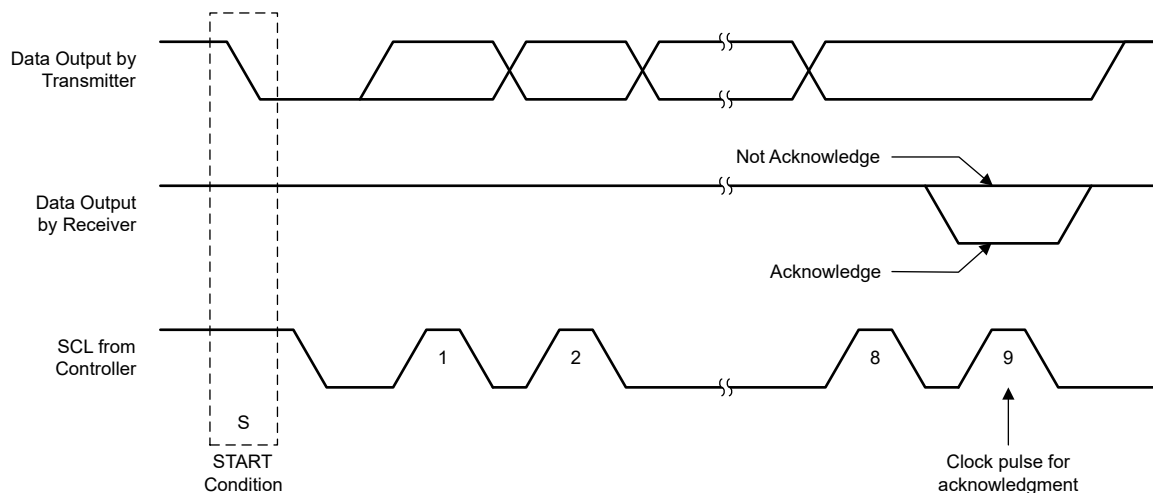


Figure 8-23. Acknowledge on the I²C Bus

The controller generates further SCL cycles to either transmit data to the target (R/\overline{W} bit 0) or receive data from the target (R/\overline{W} bit 1). In either case, the target must acknowledge the data sent by the controller. So an acknowledge signal can either be generated by the controller or by the target, depending on which one is the receiver. 9-bit valid data sequences consisting of 8-bit data and 1-bit acknowledge can continue as long as necessary (see Figure 8-24).

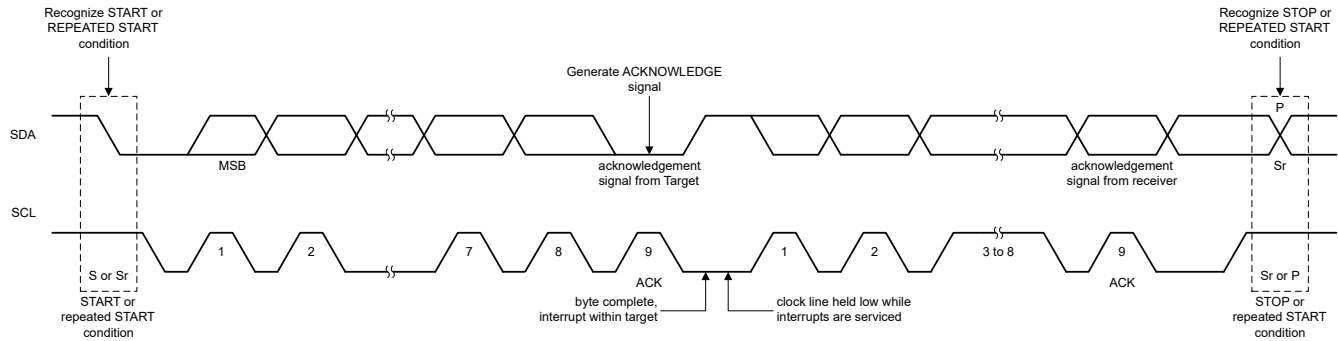


Figure 8-24. Bus Protocol

To signal the end of the data transfer, the controller generates a stop condition by pulling the SDA line from low to high while the SCL line is high (see [Figure 8-21](#)). This releases the bus and stops the communication link with the addressed target. All I²C-compatible devices must recognize the stop condition. Upon the receipt of a stop condition, all devices know that the bus is released, and they wait for a start condition followed by a matching address.

Attempting to read data from register addresses not listed in this section results in 0x00 being read out.

8.5.3 I²C Update Sequence

A start condition, a valid I²C address, a register address byte, and a data byte are required for a single update. After the receipt of each byte, the receiving device acknowledges by pulling the SDA line low during the high period of a single clock pulse. A valid I²C address selects the target. The target performs an update on the falling edge of the acknowledge signal that follows the LSB byte.

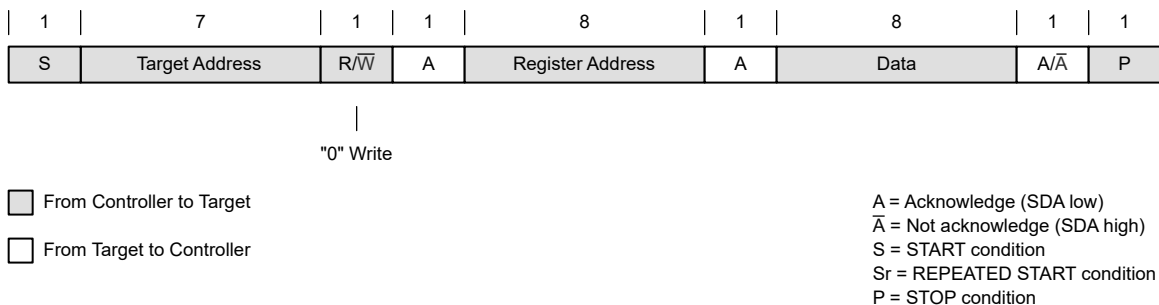


Figure 8-25. "Write" Data Transfer Format in Standard-, Fast, Fast-Plus Modes

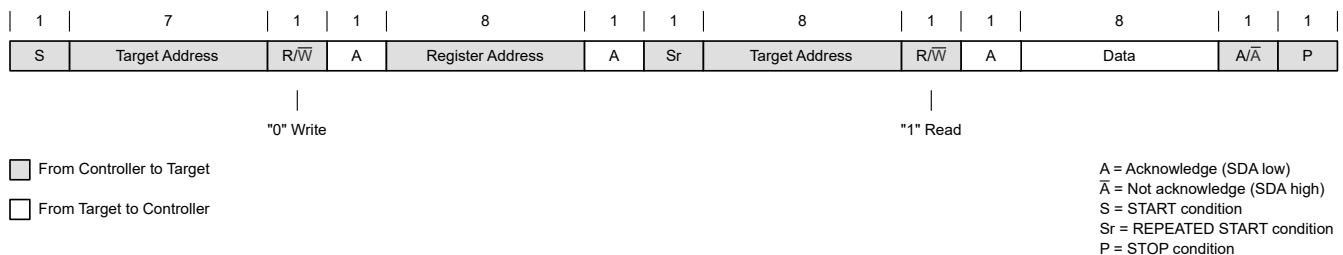


Figure 8-26. "Read" Data Transfer Format in Standard-, Fast, Fast-Plus Modes

8.5.4 I²C Register Reset

The I²C registers can be reset by:

- Pulling the input voltage below V_{POR-} (see [Section 4.4.1](#)).
- Setting the RESET bit in the CONTROL register. When RESET = 1, all registers are reset to their default values and a new start-up begins immediately. After $t_{d(EN)2}$, all I²C registers can be accessed again.

8.6 Device Registers

[Table 8-8](#) lists the Device registers. All register addresses not listed in [Table 8-8](#) must be considered as reserved locations and the register contents must not be modified.

Table 8-8. Device Registers

Address	Acronym	Register Name	Section
0h	VSET	Output Voltage Setpoint	Go
1h	CONTROL1	Control 1	Go
2h	CONTROL2	Control 2	Go
3h	CONTROL3	Control 3	Go
4h	STATUS	Status	Go

Complex bit access types are encoded to fit into small table cells. [Table 8-9](#) shows the codes that are used for access types in this section.

Table 8-9. Device Access Type Codes

Access Type	Code	Description
Read Type		
R	R	Read
Write Type		
W	W	Write
Reset or Default Value		
- n		Value after reset or the default value

8.6.1 VSET Register (Address = 0h) [Reset = X]

VSET is shown in [Figure 8-27](#) and described in [Table 8-10](#).

Return to the [Summary Table](#).

This register controls the output voltage setpoint

Figure 8-27. VSET Register

7	6	5	4	3	2	1	0
VSET							
R/W-X							

Table 8-10. VSET Register Field Descriptions

Bit	Field	Type	Reset	Description
7-0	VSET	R/W	X	Output voltage setpoint (see also the range-setting bits in the CONTROL2 register). Range 1: Output voltage setpoint = 0.4 V + VSET[7:0] × 1.25 mV Range 2: Output voltage setpoint = 0.4 V + VSET[7:0] × 2.5 mV Range 3: Output voltage setpoint = 0.4 V + VSET[7:0] × 5 mV Range 4: Output voltage setpoint = 0.8 V + VSET[7:0] × 10 mV The state of the VSETx pins during power up determines the reset value. (See Table 8-2).

8.6.2 CONTROL1 Register (Address = 1h) [Reset = 2Ah]

CONTROL1 is shown in [Figure 8-28](#) and described in [Table 8-11](#).

Return to the [Summary Table](#).

This register controls various device configuration options

Figure 8-28. CONTROL1 Register

7	6	5	4	3	2	1	0
RESET	SSCEN	SWEN	FPWMEN	DISCHEN	HICCUPEN	VRAMP	
R/W-0b	R/W-0b	R/W-1b	R/W-0b	R/W-1b	R/W-0b	R/W-10b	

Table 8-11. CONTROL1 Register Field Descriptions

Bit	Field	Type	Reset	Description
7	RESET	R/W	0b	Reset device. 0b = No effect 1b = Resets all registers to their default values. The device then performs another initialization. Reading this bit always returns 0.
6	SSCEN	R/W	0b	Spread spectrum clocking enable. 0b = SSC operation disabled 1b = SSC operation enabled
5	SWEN	R/W	1b	Software enable. 0b = Switching disabled (register values retained) 1b = Switching enabled (without the enable delay $t_{d(EN)1}$)
4	FPWMEN	R/W	0b	Forced-PWM enable. 0b = Power-save operation enabled 1b = Forced-PWM operation enabled This bit is logically ORed with the MODE/SYNC pin: If a high level or a synchronization clock is applied to the the MODE/SYNC pin, the device operates in Forced-PWM, regardless of the state of this bit.
3	DISCHEN	R/W	1b	Output discharge enable. 0b = Output discharge disabled. 1b = Output discharge enabled.
2	HICCUPEN	R/W	0b	Hiccup operation enable. 0b = Hiccup operation disabled 1b = Hiccup operation enabled. Do not enable Hiccup operation during stacked operation
1-0	VRAMP	R/W	10b	Output voltage ramp speed when changing from one output voltage setting to another. 00b = 10 mV/μs 01b = 5 mV/μs 10b = 1.25 mV/μs 11b = 0.5 mV/μs

8.6.3 CONTROL2 Register (Address = 2h) [Reset = X]

CONTROL2 is shown in [Figure 8-29](#) and described in [Table 8-12](#).

Return to the [Summary Table](#).

This register controls various device configuration options

Figure 8-29. CONTROL2 Register

7	6	5	4	3	2	1	0
RESERVED				VRANGE		SSTIME	
R-0000b				R/W-X		R/W-01b	

Table 8-12. CONTROL2 Register Field Descriptions

Bit	Field	Type	Reset	Description
7-4	RESERVED	R	0000b	Reserved for future use. To ensure compatibility with future device variants, program these bits to 0.
3-2	VRANGE	R/W	X	Output voltage range. 00b = 0.4 V to 0.71875 V in 1.25-mV steps 01b = 0.4 V to 1.0375 V in 2.5-mV steps 10b = 0.4 V to 1.675 V in 5-mV steps 11b = 0.8 V to 3.35 V in 10-mV steps. The state of the VSETx pins during power up determines the reset value. See Table 8-2 .
1-0	SSTIME	R/W	01b	Soft-start ramp time. 00b = 0.5 ms 01b = 1 ms 10b = 2 ms 11b = 4 ms

8.6.4 CONTROL3 Register (Address = 3h) [Reset = 0h]

CONTROL3 is shown in [Figure 8-30](#) and described in [Table 8-13](#).

Return to the [Summary Table](#).

This register controls various device configuration options

Figure 8-30. CONTROL3 Register

7	6	5	4	3	2	1	0
RESERVED						SINGLE	PGBLNKDVS
R-000000b						R/W-0b	R/W-0b

Table 8-13. CONTROL3 Register Field Descriptions

Bit	Field	Type	Reset	Description
7-2	RESERVED	R	000000b	Reserved for future use. To ensure compatibility with future device variants, program these bits to 0.
1	SINGLE	R/W	0b	Single operation. This bit controls the internal EN pulldown and SYNCOUT functions. 0b = EN pin pulldown and SYNCOUT enabled. I_{Q_VIN} reduced by 200 μ A typical. 1b = EN pin pulldown and SYNCOUT disabled. Do not use during stacked operation
0	PGBLNKDVS	R/W	0b	Power-good blanking during DVS. 0b = PG pin reflects the output of the window comparator 1b = PG pin is high impedance during DVS

8.6.5 STATUS Register (Address = 4h) [Reset = 2h]

STATUS is shown in [Figure 8-31](#) and described in [Table 8-14](#).

Return to the [Summary Table](#).

This register returns the device status flags

Figure 8-31. STATUS Register

7	6	5	4	3	2	1	0
RESERVED		HICCUP	ILIM	TWARN	TSHUT	PBUV	PBOV
R-00b		R-0b	R-0b	R-0b	R-0b	R-1b	R-0b

Table 8-14. STATUS Register Field Descriptions

Bit	Field	Type	Reset	Description
7-6	RESERVED	R	00b	Reserved for future use. To ensure compatibility with future device variants, ignore these bits.
5	HICCUP	R	0b	Hiccup. This bit reports whether a hiccup event occurred since the last time the STATUS register was read. 0b = No hiccup event occurred 1b = A hiccup event occurred
4	ILIM	R	0b	Current limit. This bit reports whether a current limit event occurred since the last time the STATUS register was read. 0b = No current limit event occurred 1b = A current limit event occurred
3	TWARN	R	0b	Thermal warning. This bit reports whether a thermal warning event occurred since the last time the STATUS register was read. 0b = No thermal warning event occurred 1b = A thermal warning event occurred
2	TSHUT	R	0b	Thermal shutdown. This bit reports whether a thermal shutdown event occurred since the last time the STATUS register was read. 0b = No thermal shutdown event occurred 1b = A thermal shutdown event occurred
1	PBUV	R	1b	Power-bad undervoltage. This bit reports whether a power-bad event (output voltage too low) occurred since the last time the STATUS register was read. 0b = No power-bad undervoltage event occurred 1b = A power-bad undervoltage event occurred
0	PBOV	R	0b	Power-bad overvoltage. This bit reports whether a power-bad event (output voltage too high) occurred since the last time the STATUS register was read. 0b = No power-bad overvoltage event occurred 1b = A power-bad overvoltage event occurred

9 Application and Implementation

Note

Information in the following applications sections is not part of the TI component specification, and TI does not warrant its accuracy or completeness. TI's customers are responsible for determining suitability of components for their purposes, as well as validating and testing their design implementation to confirm system functionality.

9.1 Application Information

The following section discusses selection of the external components to complete the power supply design for typical a application.

The required power inductor is integrated inside the TPSM8287Axx, as shown in the [block diagram](#). The integrated shielded inductor's inductance and tolerance are found in [Table 5-1](#). All TPSM8287Axx versions are pin-to-pin compatible, though the inductance and frequency is different between the versions. Check the values for the specific device before starting the design procedure below.

9.2 Typical Application

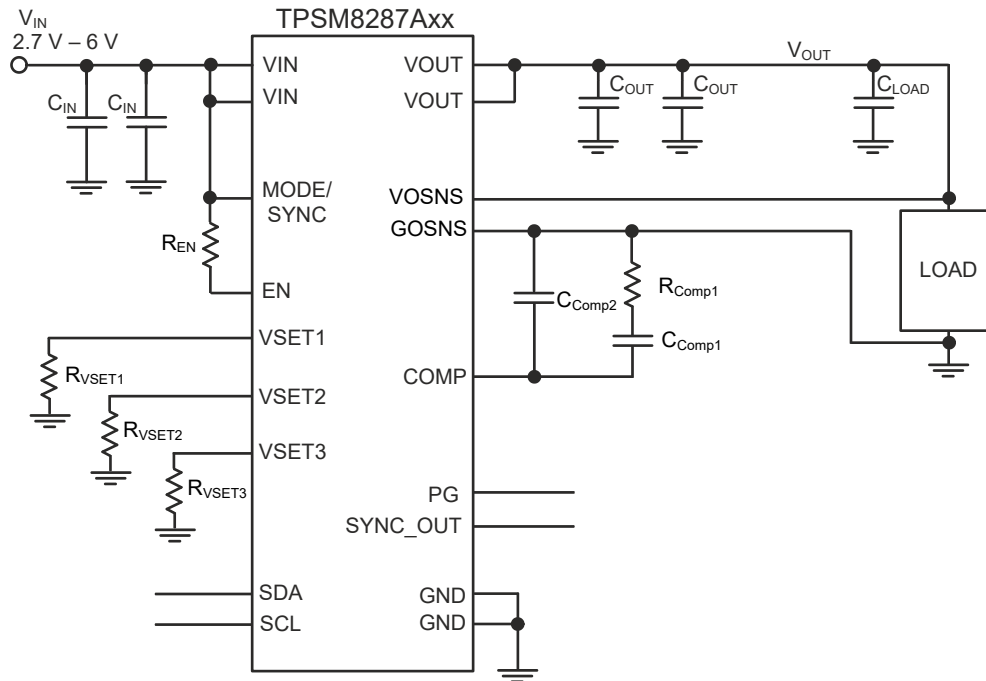


Figure 9-1. Typical Application Schematic

Table 9-1. List of Components

REFERENCE	VALUE	DESCRIPTION	PART NUMBER	Manufacturer ⁽¹⁾
C _{Comp1}	6800 pF	Ceramic Capacitor, X7R	Std	Std
C _{Comp2}	10 pF	Ceramic Capacitor, C0G/NP0	Std	Std
C _{OUT}	2 × 47 µF	Ceramic Capacitor, 6.3 V, X6S, size 0805	GRM21BC80J476ME01L	Murata
C _{LOAD}	220 µF	Ceramic Capacitor, 4 V, X6S, size 1210	GRM32EC80G227ME05L	Murata
C _{IN}	2 × 22 µF	Ceramic Capacitor, 10 V, X7R, size 0805	GRM21BZ71A226ME15L	Murata
R _{Comp1}	806 Ω	Resistor 1%, 0.1 W	Std	Std

Table 9-1. List of Components (continued)

REFERENCE	VALUE	DESCRIPTION	PART NUMBER	Manufacturer ⁽¹⁾
R _{VSET1} , R _{VSET2} , R _{VSET3}	set per Table 8-2	Resistor 5%, 0.1 W	Std	Std
R _{EN}	15 kΩ	Resistor 5%, 0.1 W	Std	Std

(1) See the [Third-Party Products Disclaimer](#) disclaimer.

9.2.1 Design Requirements

[Table 9-2](#) lists the operating parameters for this application example with the TPSM8287A12BBS device.

Table 9-2. Design Parameters

SYMBOL	PARAMETER	VALUE
V _{IN}	Input voltage	2.7 - 6.0 V
V _{OUT}	Output voltage	0.90 V
TOL _{VOUT}	Output voltage tolerance allowed by the application	±4.0%
TOL _{DC}	Output voltage tolerance of the TPSM8287A12BBS (DC accuracy)	±1%
ΔI _{OUT(step)}	Output current load step	±8.0 A
t _t	Load step transition time	1 μs
f _{SW}	Switching frequency	2.25 MHz
L	Integrated inductor	100 nH
TOL _{IND}	Integrated inductor tolerance	±20%
g _m	Error amplifier transconductance	1.5 mS
τ	Emulated current time constant	12.5 μs
TOL _τ	Tolerance of the emulated current time constant	±30%
BW _τ	Target loop bandwidth	300 kHz
N _Φ	Number of paralleled devices (phases)	1

Preliminary Calculations

The maximum allowable deviation of the power supply is ±4.0%. The DC accuracy of the TPSM8287Axx is specified as ±1%, and therefore the maximum output voltage variation during a transient is given by:

$$\Delta V_{OUT} = \pm V_{OUT} \times (TOL_{VOUT} - TOL_{DC}) \quad (5)$$

$$\Delta V_{OUT} = \pm V_{OUT} \times (4.0\% - 1\%) = \pm 27 \text{ mV} \quad (6)$$

[Equation 7](#) computes the peak-to-peak inductor current ripple, which is the greatest at the maximum input voltage:

$$I_{L(PP)} = \frac{V_{OUT}}{V_{IN(max)}} \left(\frac{V_{IN(max)} - V_{OUT}}{L \times f_{SW}} \right) \quad (7)$$

$$I_{L(PP)} = \frac{0.9}{6.0} \left(\frac{6.0 - 0.9}{100 \times 10^{-9} \times 2.25 \times 10^6} \right) = 3.4 \text{ A} \quad (8)$$

The maximum load step occurs when the load step from the application occurs at exactly the same time as the peak (or trough) of the inductor ripple current, and is given by:

$$\Delta I_{OUT(max)} = \Delta I_{OUT(step)} + \frac{\Delta I_L(PP)}{2 \times N\Phi} \quad (9)$$

$$\Delta I_{OUT(max)} = 8.0 + \frac{3.4}{2 \times 1} = 9.7 \text{ A} \quad (10)$$

9.2.2 Detailed Design Procedure

The following subsections describe how to calculate the external components required to meet the specified transient requirements of a given application. The calculations include the worst-case variation of components and use the RMS method to combine the variation of uncorrelated parameters.

9.2.2.1 Selecting the Input Capacitors

The input capacitor buffers the input voltage for transient events and also decouples the converter from the supply. TI recommends a X7R multilayer ceramic capacitor (MLCC) for best filtering and must be placed between both VIN and GND pins, as close as possible to those pins. For applications with ambient temperatures below 85°C, a capacitor with X5R dielectric can be used. Ceramic capacitors have a DC-Bias effect, which has a strong influence on the final effective capacitance. Choose the right capacitor carefully in combination with considering its package size and voltage rating. The two high frequency input capacitors are placed inside the module to reduce EMI, shrink the overall solution size and to simplify the board layout. As those integrated capacitors target high frequencies, additional external capacitors with a minimum of 5 µF are required per VIN pin.

The TPSM8287Axx devices feature a *butterfly* or parallel layout with two pairs of VIN and GND pins on opposite sides of the package. This allows the input capacitors to be placed symmetrically on the PCB so that the electromagnetic fields cancel each other out, thereby reducing EMI. In addition, the parasitic loop inductance between the input capacitors and the IC is reduced through this pinout.

The duty cycle of the converter is given by:

$$D = \frac{V_{OUT}}{\eta \times V_{IN}} \quad (11)$$

where:

- V_{IN} is the input voltage
- V_{OUT} is the output voltage
- η is the efficiency

$$D = \frac{0.90}{0.83 \times 2.7} = 0.402 \quad (12)$$

The value of input capacitance needed to meet any system-level input voltage ripple requirement is given by [Equation 13](#). For this example, the lowest input voltage and highest load current are used to generate a worst case input voltage ripple of 100 mV.

$$C_{IN} = \frac{D \times (1 - D) \times I_{OUT}}{V_{IN(PP)} \times f_{sw}} \quad (13)$$

where:

- D is the duty cycle
- f_{sw} is the switching frequency
- L is the inductance
- I_{OUT} is the output current

$$C_{IN} = \frac{0.402 \times (1 - 0.402) \times 12.0}{0.1 \times 2.25 \times 10^6} = 12.8 \text{ µF} \quad (14)$$

The value of C_{IN} calculated with [Equation 13](#) is the *effective* capacitance after all derating, tolerance, and aging effects have been considered.

9.2.2.2 Selecting the Target Loop Bandwidth

The control loop bandwidth measures how quickly the device responds to a change in output voltage. With the TPSM8287Axx's external compensation, the loop bandwidth is adjustable to balance the tradeoff of a fast response versus stability and ringing. The R_{Comp1} resistor and output capacitance are the primary means of adjusting the loop bandwidth.

TI recommends setting the target loop bandwidth to 200 kHz for a simple design. If strong load transients are expected in the application, the target bandwidth may be set as high as $\frac{1}{4}$ of the switching frequency. A target bandwidth of 300 kHz is used for this example design.

9.2.2.3 Selecting the Compensation Resistor

Use Equation 15 to calculate the recommended value of compensation resistor, R_{Comp1} :

$$R_{Comp1} = \frac{1}{g_m} \left(\frac{\pi \times \Delta I_{OUT(step)} \times L}{4 \times \tau \times \Delta V_{OUT} \times N\Phi} - 1 \right) \left(1 + \sqrt{TO L_{IND}^2 + TO L_{\tau}^2} \right) \quad (15)$$

$$R_{Comp1} = \frac{1}{1.5 \times 10^{-3}} \left(\frac{\pi \times 8.0 \times 100 \times 10^{-9}}{4 \times 12.5 \times 10^{-6} \times 27 \times 10^{-3} \times 1} - 1 \right) \left(1 + \sqrt{20\%^2 + 30\%^2} \right) = 781.6 \, \Omega \quad (16)$$

Picking a standard component above the calculated value, a 806-Ohm resistor is chosen in this example. The selected value must be used for the further calculations.

9.2.2.4 Selecting the Output Capacitors

In practice, the total output capacitance is typically comprised of a combination of different capacitors, in which larger capacitors provide the load current at lower frequencies and smaller capacitors provide the load current at higher frequencies to satisfy the load impedance requirements. The value, type, and location of the output capacitors are typically defined by the load. TI recommends X7R multilayer ceramic capacitors (MLCCs) for best filtering and must be placed between both VOUT and GND pins, as close as possible to those pins. For applications with ambient temperatures below 85°C, capacitors with an X5R dielectric can be used. Ceramic capacitors have a DC-Bias effect, which has a strong influence on the final effective capacitance. Choose the right capacitors carefully in combination with considering its package size and voltage rating. The below calculations use the effective value of the total output capacitance.

The TPSM8287Axx devices feature a *butterfly* or *parallel* layout with VOUT and GND pins on opposite sides of the package. This allows the output capacitors to be placed symmetrically on the PCB such that the electromagnetic fields cancel each other out, thereby reducing EMI.

The TPSM8287Axx device is optimized to support harsh load transients. The device external loop compensation tunes the loop response to the desired response with a given output capacitance. The below calculations create designs that meet the load step specified in Table 9-2. These calculations typically result in total output capacitances of several hundred μ F.

Best output voltage regulation is achieved when the TPSM8287Axx device, the output capacitors, and load are placed very close to each other, keeping the distance and added inductance between the device and load to the absolute minimum.

In case this can not be achieved, then the majority of the total capacitance must be located at the load, with just two capacitors located at the TPSM8287Axx device. TI recommends that the capacitance located at the load be at least twice the amount of the capacitance located at the device.

If the application does not contain harsh load transients, then smaller values of output capacitances are possible. Do not use output capacitances below the minimum values in Section 7.3.

The transient response of the module is defined by one of two criteria:

- The slew rate of the current through the inductor, in which case the feedback loop of the converter saturates.
- The loop bandwidth, in which the converter stays in regulation, and its loop does not saturate ($BW_T < f_{SW} / 4$)

Which of the above criteria applies in any given application depends on the operating conditions and component values used. Calculate the output capacitance for both cases and select the higher of the two values.

If the converter remains in regulation, the minimum required output capacitance is given by:

$$C_{OUT(min)(reg)} = \left(\frac{\tau \times (1 + g_m \times R_{Comp1})}{2 \times \pi \times \frac{L}{N\Phi} \times BW_\tau} \right) \left(1 + \sqrt{TOL_\tau^2 + TOL_{IND}^2 + TOL_{fSW}^2} \right) \quad (17)$$

$$C_{OUT(min)(reg)} = \left(\frac{12.5 \times 10^{-6} \times (1 + 1.5 \times 10^{-3} \times 806)}{2 \times \pi \times \frac{100 \times 10^{-9}}{1} \times 300 \times 10^3} \right) \left(1 + \sqrt{30\%^2 + 20\%^2 + 10\%^2} \right) = 201.3 \mu F \quad (18)$$

If the converter loop saturates, the minimum output capacitance is given by:

$$C_{OUT(min)(sat)} = \frac{1}{\Delta V_{OUT}} \left(\frac{L \times \Delta I_{OUT(max)}^2}{2 \times V_{OUT} \times N\Phi} - \frac{\Delta I_{OUT(step)} \times t_t}{2} \right) (1 + TOL_{IND}) \quad (19)$$

$$C_{OUT(min)(sat)} = \frac{1}{27 \times 10^{-3}} \left(\frac{100 \times 10^{-9} \times 9.7^2}{2 \times 0.9 \times 1} - \frac{8.0 \times 1 \times 10^{-6}}{2} \right) (1 + 20\%) = 54.5 \mu F \quad (20)$$

In this case, choose $C_{OUT(min)} = 201.3 \mu F$ as the larger of the two values for the output capacitance.

Table 9-1 lists the three output capacitors chosen. $2 \times 47\text{-}\mu F$ capacitors are placed close to the IC, giving a minimum effective capacitance of about $27 \mu F$ each. A single $220\text{-}\mu F$ capacitor is placed near the load to approximate the total decoupling capacitance required by a typical load. This $220\text{-}\mu F$ capacitor yields about $138 \mu F$ of effective capacitance. Together, the $192 \mu F$ of effective capacitance is very close to the required minimum value calculated above. For further calculations, use $C_{OUT} = 192 \mu F$.

Equation 21 checks that most of the output capacitance is placed at the load. If the ratio is less than 1, increase the capacitance at the load or place the device, output capacitance, and load next to each other such that there is no separation between the output capacitances.

$$\frac{C_{LOAD}}{2 \times C_{OUT}} > 1 \quad (21)$$

$$\frac{138 \times 10^{-6}}{2 \times (2 \times 27 \times 10^{-6})} > 1 = \text{True} \quad (22)$$

9.2.2.5 Selecting the Compensation Capacitor, C_{Comp1}

First, use Equation 23 to calculate the bandwidth of the inner loop:

$$BW_{INNER} = \frac{\tau}{2\pi \times \frac{L}{N\Phi} \times C_{OUT}} \quad (23)$$

$$BW_{INNER} = \frac{12.5 \times 10^{-6}}{2\pi \times \frac{100 \times 10^{-9}}{1} \times 192 \times 10^{-6}} = 104 \text{ kHz} \quad (24)$$

Next, calculate the product of $g_m R_{Comp1}$:

$$g_m \times R_{Comp1} = 1.5 \times 10^{-3} \times 806 = 1.21 \quad (25)$$

If $g_m R_{Comp1} > 1$, use Equation 26 to calculate the recommended value of C_{Comp1} , which sets a zero in the control loop. If $g_m R_{Comp1} < 1$, use Equation 28 to calculate the recommended value of C_{Comp1} .

$$C_{Comp1} = \frac{2}{\pi \times BW_{INNER} \times g_m \times R_{Comp1}} \quad (26)$$

$$C_{Comp1} = \frac{2}{\pi \times 104 \times 10^3 \times 1.5 \times 10^{-3} \times (806)} = 6.31 \text{ nF} \quad (27)$$

The closest standard value is 6.8 nF.

$$C_{Comp1} = \frac{2 \times g_m}{\pi \times BW_{INNER}} \quad (28)$$

Equation 29 approximates the loop bandwidth.

$$BW = BW_{INNER} \times 2 \times (1 + R_{Comp1} \times g_m) \quad (29)$$

$$BW = 104 \times 10^3 \times 2 \times (1 + 806 \times 1.5 \times 10^{-3}) = 458 \text{ kHz} \quad (30)$$

9.2.2.6 Selecting the Compensation Capacitor, C_{Comp2}

The compensation capacitor, C_{Comp2} , is an optional capacitor that TI recommends the user include to bypass high-frequency noise away from the COMP pin. The value of this capacitor is not critical; 10-pF or 22-pF capacitors are designed for typical applications.

This capacitor can be made larger to suppress high-frequency zeros or resonances that occur in the system output voltage routing and decoupling network. Equation 31 calculates the pole created by C_{Comp2} .

$$f_{pole} = \frac{1}{2 \times \pi \times R_{Comp1} \times C_{Comp2}} \quad (31)$$

9.2.3 Application Curves

$V_{IN} = 5.0\text{ V}$, $V_{OUT} = 0.9\text{ V}$, $T_A = 25^\circ\text{C}$, BOM = [Table 9-1](#), unless otherwise noted.

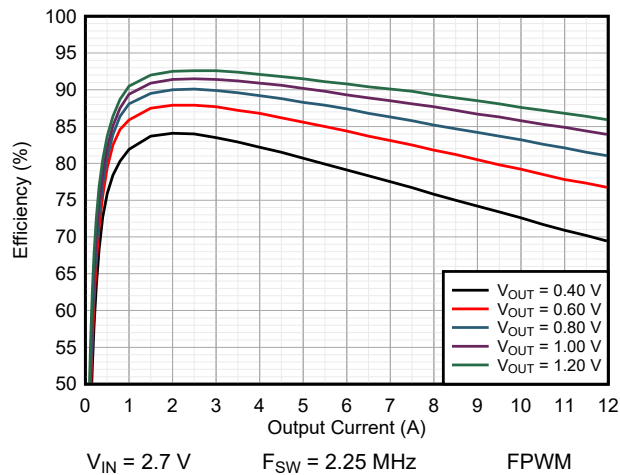


Figure 9-2. Efficiency TPSM8287A12BBS

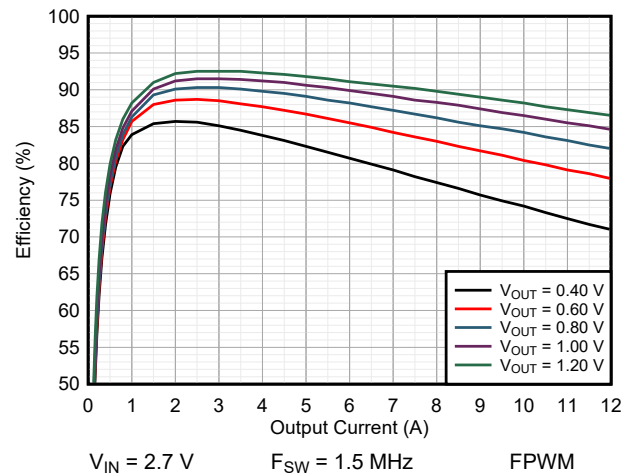


Figure 9-3. Efficiency TPSM8287A12BAS

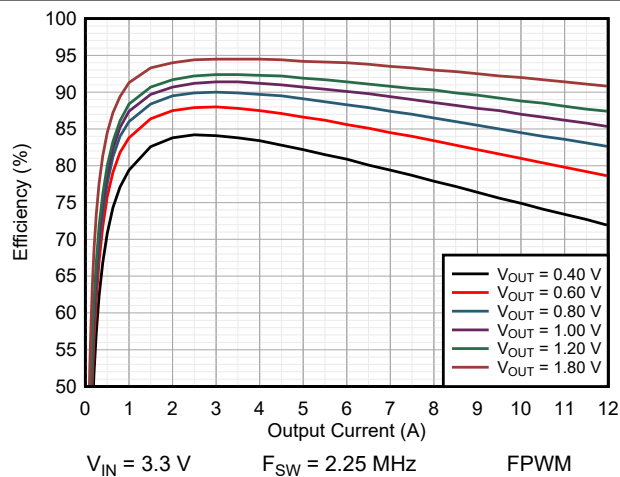


Figure 9-4. Efficiency TPSM8287A12BBS

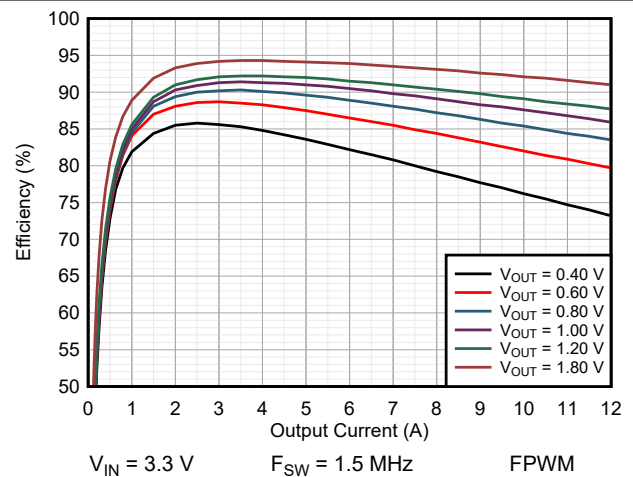


Figure 9-5. Efficiency TPSM8287A12BAS

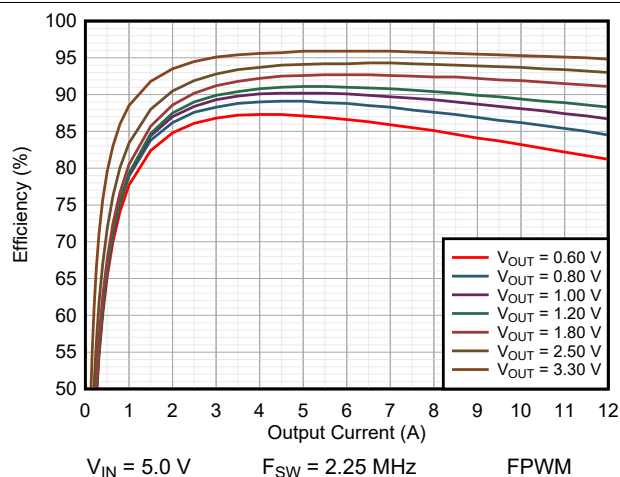


Figure 9-6. Efficiency TPSM8287A12BBS

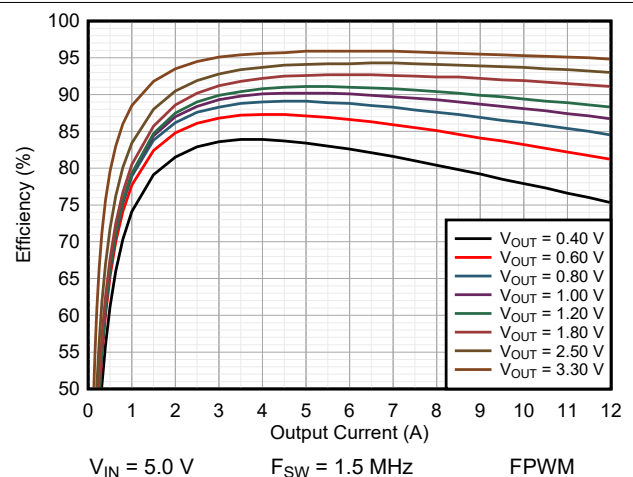


Figure 9-7. Efficiency TPSM8287A12BAS

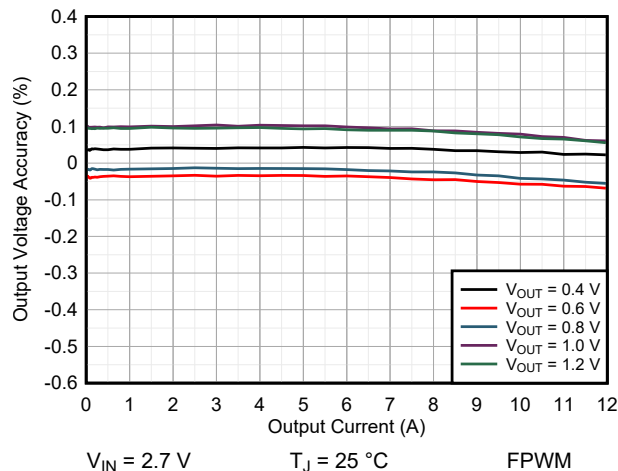


Figure 9-8. Load Regulation TPSM8287A12BAS

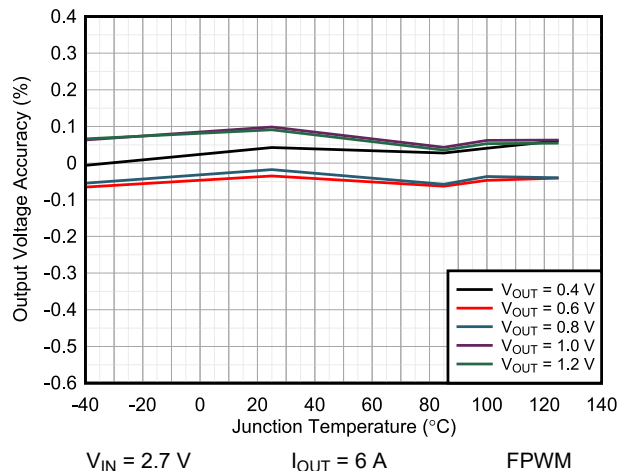


Figure 9-9. Vout Accuracy vs Temperature TPSM8287A12BAS

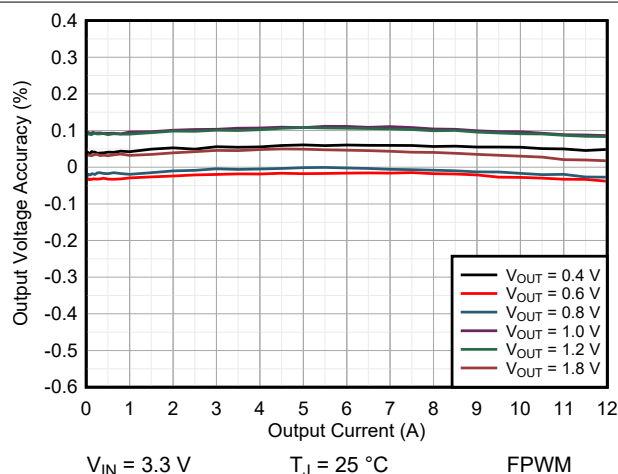


Figure 9-10. Load Regulation TPSM8287A12BAS

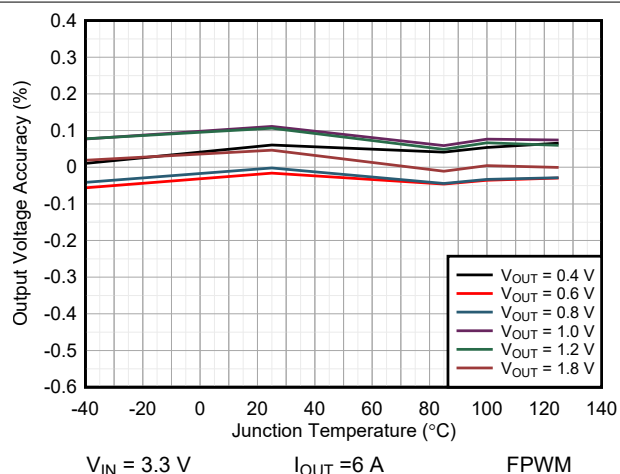


Figure 9-11. Vout Accuracy vs Temperature TPSM8287A12BAS

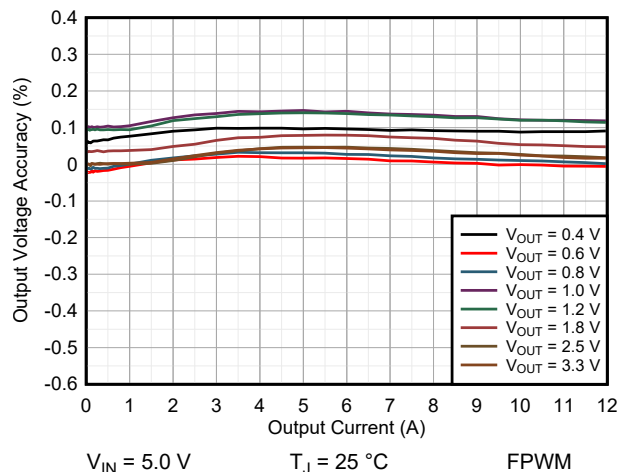


Figure 9-12. Load Regulation TPSM8287A12BAS

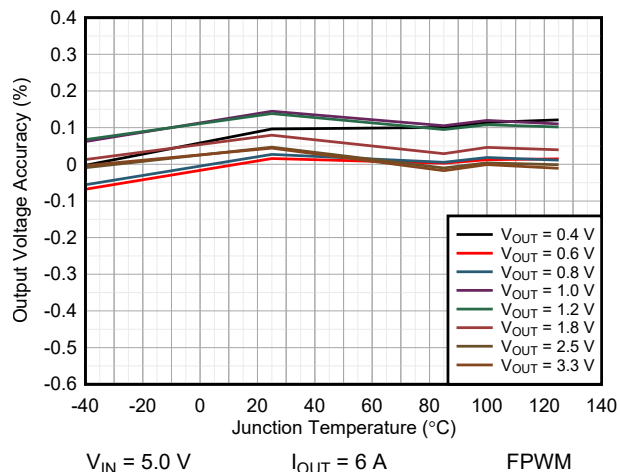
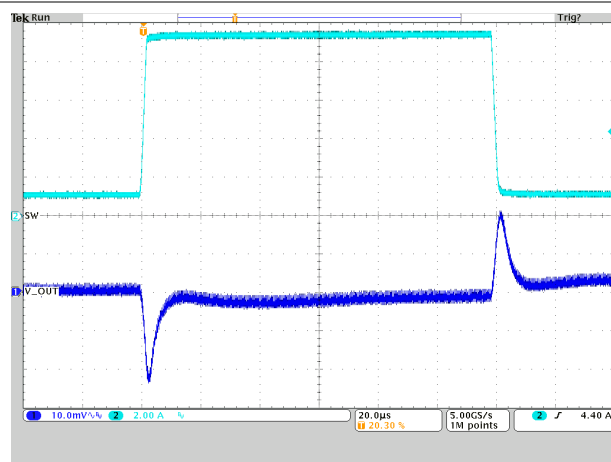
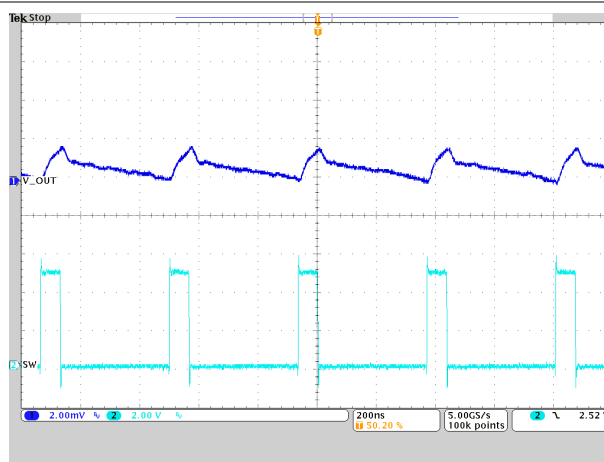


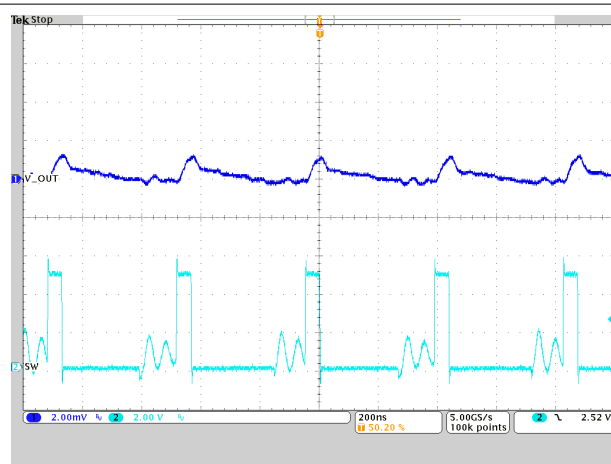
Figure 9-13. Vout Accuracy vs Temperature TPSM8287A12BAS



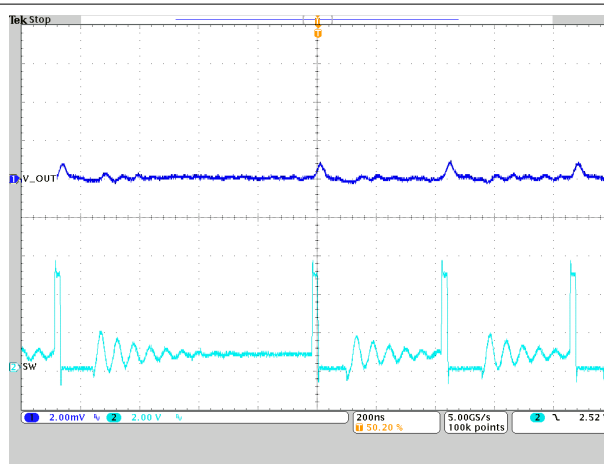
Vout = 0.9 V Iout = 1 A → 9 A → 1 A
**Figure 9-14. Load Transient Response
TPSM8287A12BBS**



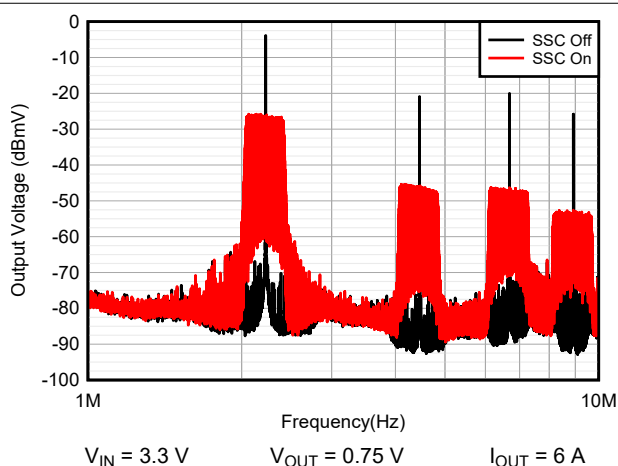
Vout = 0.9 V IOUT = 2 A
**Figure 9-15. PWM-CCM Operation
TPSM8287A12BBS**



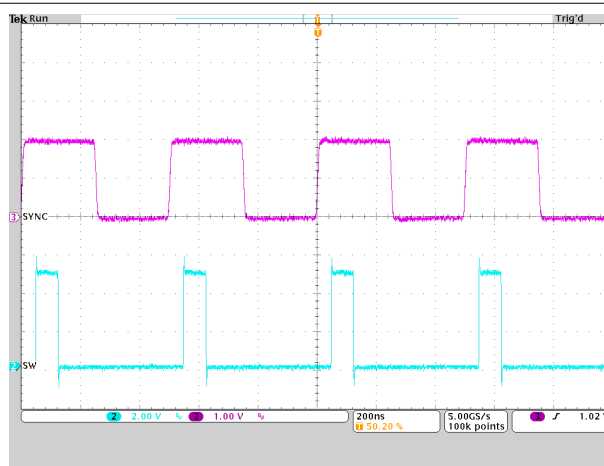
Vout = 0.9 V
**Figure 9-16. PWM-DCM Operation
TPSM8287A12BBS**



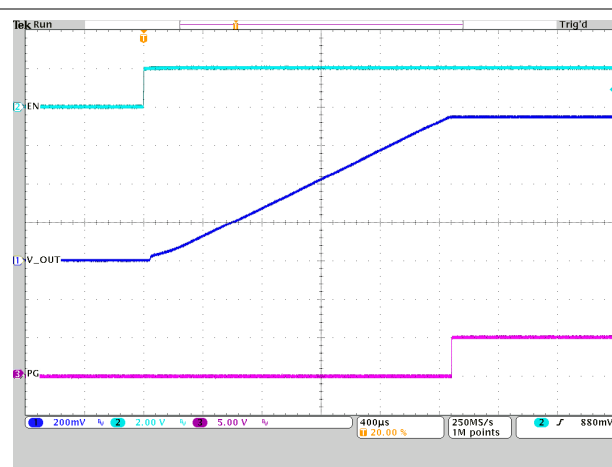
Vout = 0.9 V
**Figure 9-17. PFM-DCM Operation
TPSM8287A12BBS**



V_{IN} = 3.3 V V_{OUT} = 0.75 V I_{OUT} = 6 A
**Figure 9-18. Output Noise over Frequency
TPSM8287A12BBS**

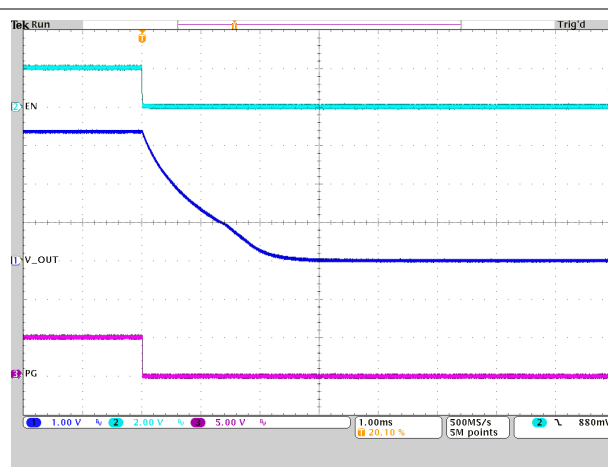


I_{OUT} = 1 A f_(SYNC) = 2 MHz
**Figure 9-19. Synchronization to an External Clock
TPSM8287A12BBS**



$V_{OUT} = 0.75\text{ V}$

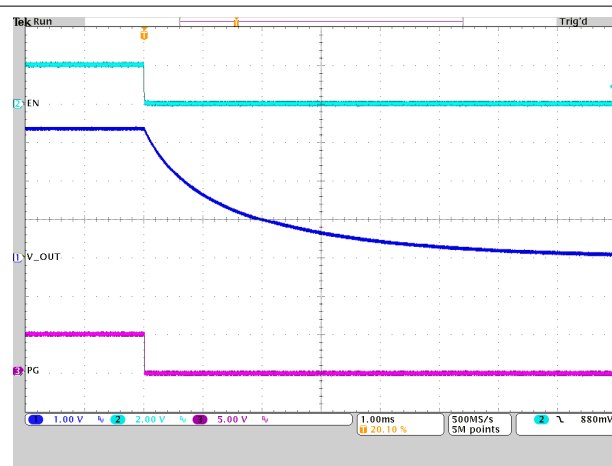
Figure 9-20. Start-Up Using EN Pin



$V_{OUT} = 3.3\text{ V}$

Load = 7.5 Ω

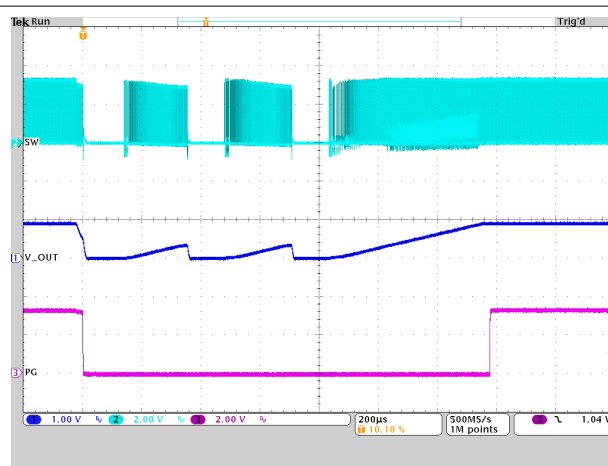
Figure 9-21. Shutdown Using EN Pin (Discharge Enabled)



$V_{OUT} = 3.3\text{ V}$

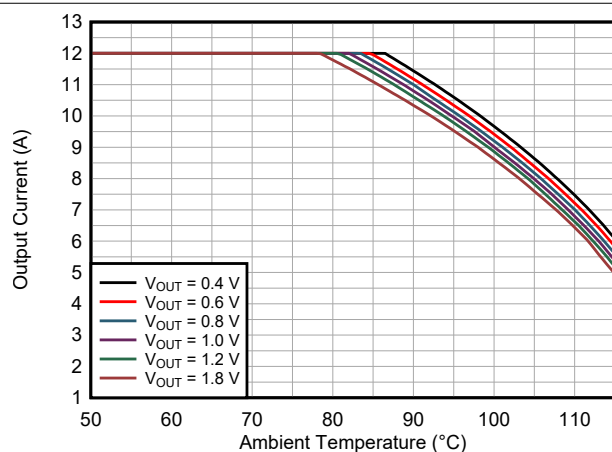
Load = 7.5 Ω

Figure 9-22. Shutdown Using EN Pin (Discharge Disabled)

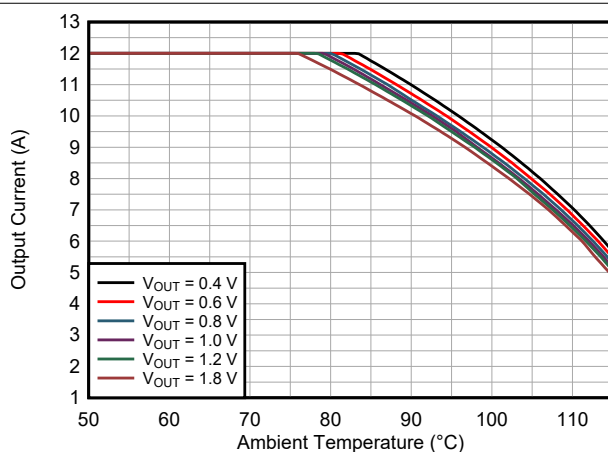


$V_{IN} = 3.3\text{ V}$

Figure 9-23. Current Limit (Hiccup)



**Figure 9-24. Safe Operating Area
TPSM8287A12BAS $V_{IN} = 3.3\text{ V}$**



**Figure 9-25. Safe Operating Area
TPSM8287A12BBS $V_{IN} = 3.3\text{ V}$**

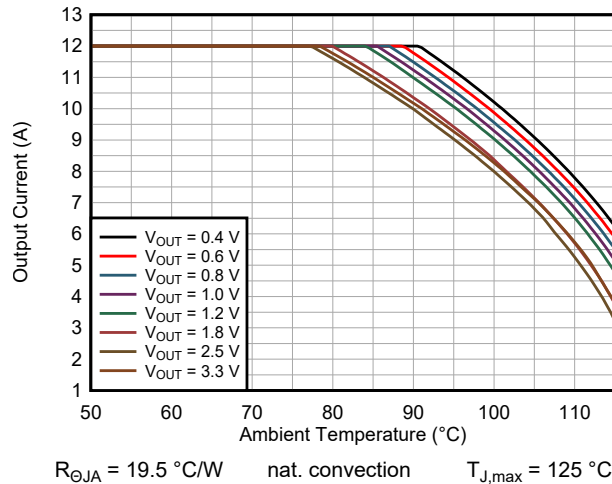


Figure 9-26. Safe Operating Area
TPSM8287A12BAS $V_{IN} = 5.0\text{ V}$

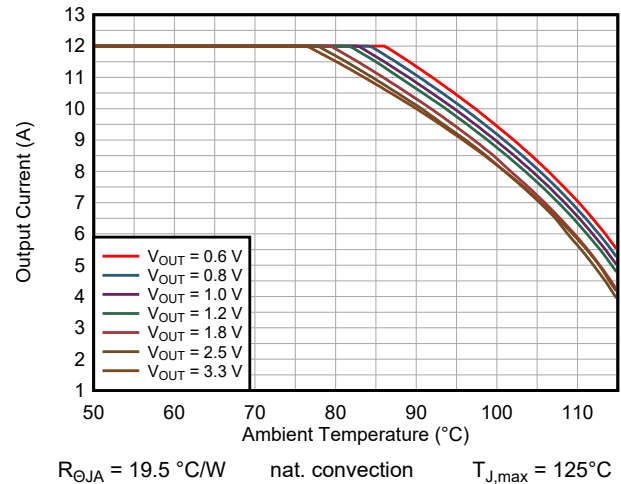


Figure 9-27. Safe Operating Area
TPSM8287A12BBS $V_{IN} = 5.0\text{ V}$

9.3 Power Supply Recommendations

The TPSM8287Axx family has no special requirements for its input power supply. The output current rating of the input power supply must be rated according to the supply voltage and current requirements of the TPSM8287Axx. For proper operation, the Input voltage needs to be at least 1.4 V above the selected output voltage.

9.4 Layout

9.4.1 Layout Guidelines

A proper layout is critical for the operation of any switched mode power supply, especially at high switching frequencies. Therefore, the PCB layout of the TPSM8287Axx demands careful attention to ensure best performance. A poor layout can lead to issues like the following:

- Bad line and load regulation
- Instability
- Increased EMI radiation
- Noise sensitivity

Refer to the [Five Steps to a Great PCB Layout for a Step-Down Converter Technical Brief](#) for a detailed discussion of general best practices. The following are specific recommendations for the TPSM8287Axx:

- Place the input capacitors as close as possible to the VIN and GND pins of the device. This placement is the most critical component placement. Route the input capacitors directly to the VIN and GND pins avoiding vias.
- Place the output capacitors close to the VOUT and GND pins and route them directly avoiding vias.
- Place the IC close to the load to minimize the power loss from voltage drop on the output and to minimize parasitic inductance between the output capacitors at the TPSM8287Axx and those at the load.
- To improve thermal performance, use GND vias under the three exposed thermal pads. Directly connect the GND pins to the exposed thermal pad with copper on the top PCB layer.
- Route the VOSNS and GOSNS remote sense lines as a differential pair and connect them to the lowest impedance point at the load. Do not route the VOSNS and GOSNS traces close to any switch nodes, the input capacitors, clock signals, or other aggressor signals.
- Connect the compensation components between COMP and GOSNS. Do not connect the compensation components directly to power ground.
- Place the VSETx resistors (and SYNC_OUT resistor in the secondary devices) close to the TPSM8287Axx to minimize parasitic capacitance.
- In the stacked configuration, route VOSNS, GOSNS, and COMP directly to keep them short and avoid noisy aggressor signals.

- Refer to [Figure 9-28](#) for an example of component placement, routing, and thermal design.
- The recommended land pattern for the TPSM8287Axx is shown at the end of this data sheet. For best manufacturing results, create the pads as solder mask defined (SMD) when some pins (such as VIN, VOUT, and GND) are connected to large copper planes. Using SMD pads keeps each pad the same size and avoids solder pulling the device during reflow.

9.4.2 Layout Example

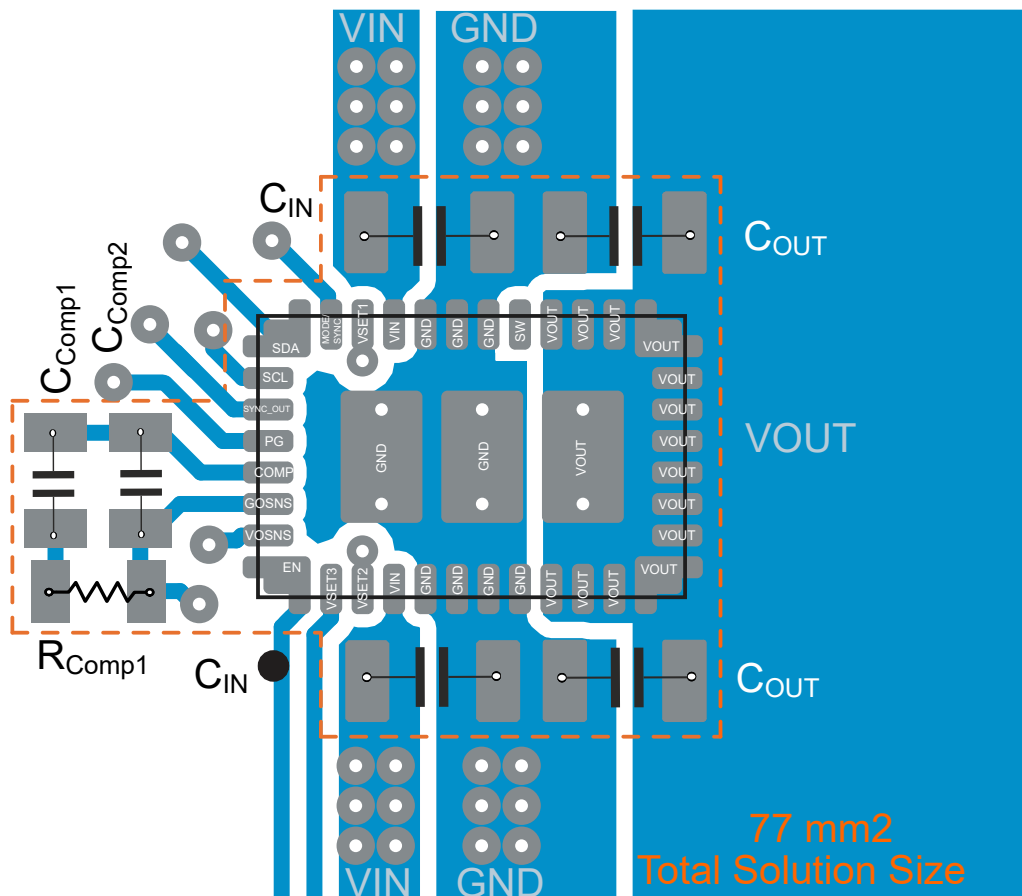


Figure 9-28. Layout Example

10 Device and Documentation Support

10.1 Device Support

10.1.1 Third-Party Products Disclaimer

TI'S PUBLICATION OF INFORMATION REGARDING THIRD-PARTY PRODUCTS OR SERVICES DOES NOT CONSTITUTE AN ENDORSEMENT REGARDING THE SUITABILITY OF SUCH PRODUCTS OR SERVICES OR A WARRANTY, REPRESENTATION OR ENDORSEMENT OF SUCH PRODUCTS OR SERVICES, EITHER ALONE OR IN COMBINATION WITH ANY TI PRODUCT OR SERVICE.

10.2 Documentation Support

10.2.1 Related Documentation

For related documentation see the following:

Texas Instruments, [Achieving a clean startup by using a DC/DC converter with a precise enable-pin threshold analog design journal](#)

10.3 Receiving Notification of Documentation Updates

To receive notification of documentation updates, navigate to the device product folder on [ti.com](#). Click on *Subscribe to updates* to register and receive a weekly digest of any product information that has changed. For change details, review the revision history included in any revised document.

10.4 Support Resources

[TI E2E™ support forums](#) are an engineer's go-to source for fast, verified answers and design help — straight from the experts. Search existing answers or ask your own question to get the quick design help you need.

Linked content is provided "AS IS" by the respective contributors. They do not constitute TI specifications and do not necessarily reflect TI's views; see TI's [Terms of Use](#).

10.5 Trademarks

TI E2E™ is a trademark of Texas Instruments.

All trademarks are the property of their respective owners.

10.6 Electrostatic Discharge Caution



This integrated circuit can be damaged by ESD. Texas Instruments recommends that all integrated circuits be handled with appropriate precautions. Failure to observe proper handling and installation procedures can cause damage.

ESD damage can range from subtle performance degradation to complete device failure. Precision integrated circuits may be more susceptible to damage because very small parametric changes could cause the device not to meet its published specifications.

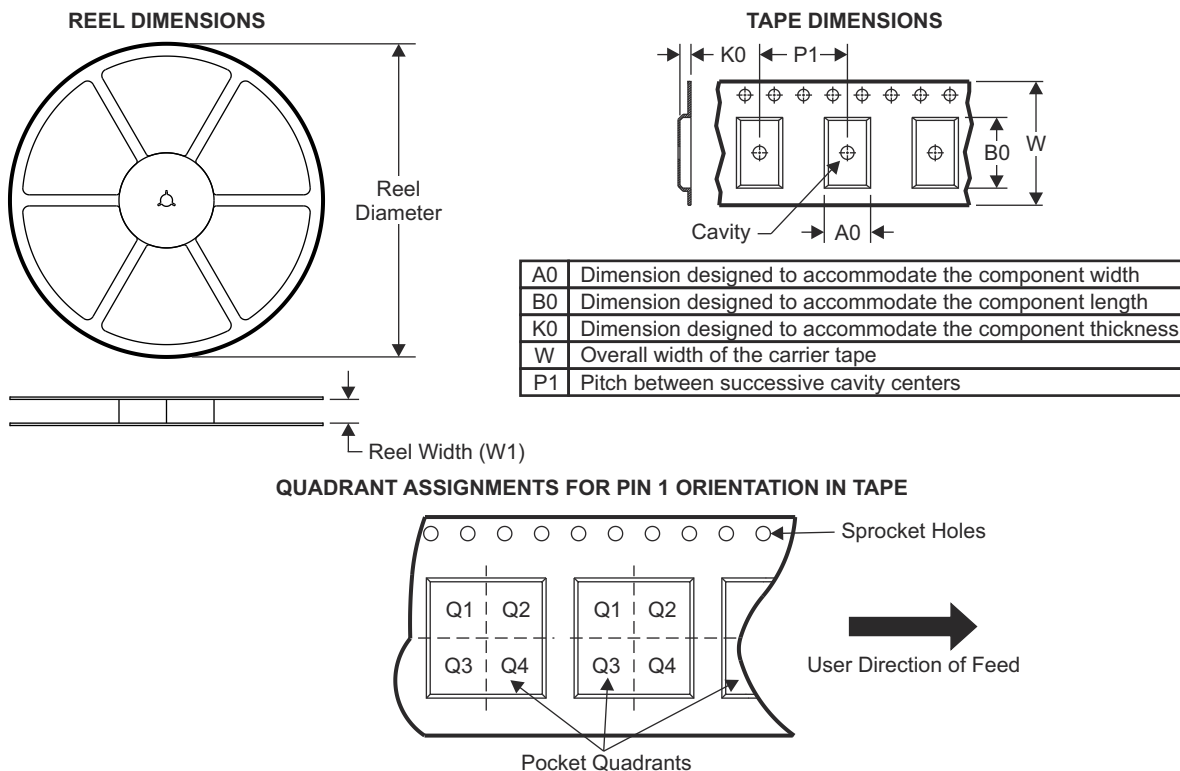
10.7 Glossary

[TI Glossary](#) This glossary lists and explains terms, acronyms, and definitions.

11 Mechanical, Packaging, and Orderable Information

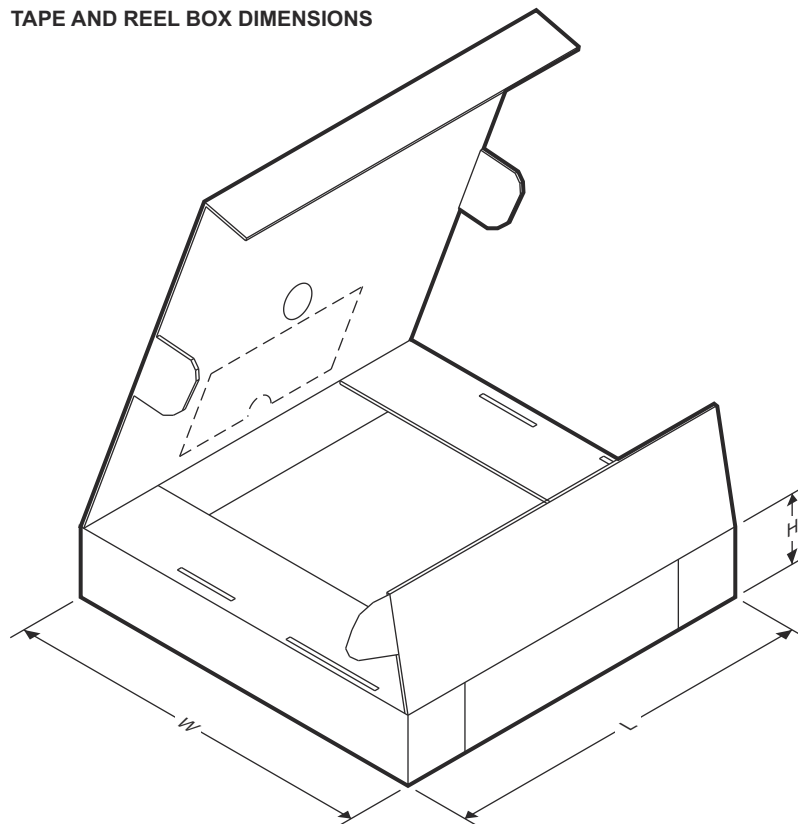
The following pages include mechanical, packaging, and orderable information. This information is the most current data available for the designated devices. This data is subject to change without notice and revision of this document. For browser-based versions of this data sheet, refer to the left-hand navigation.

11.1 Tape and Reel Information



Device	Package Type	Package Drawing	Pins	SPQ	Reel Diameter (mm)	Reel Width W1 (mm)	A0 (mm)	B0 (mm)	K0 (mm)	P1 (mm)	W (mm)	Pin1 Quadrant
TPSM8287A12BBSRD VR	B0QFN	RDV	39	3000	330	16.4	4.80	7.10	2.05	8.0	16.4	Q1

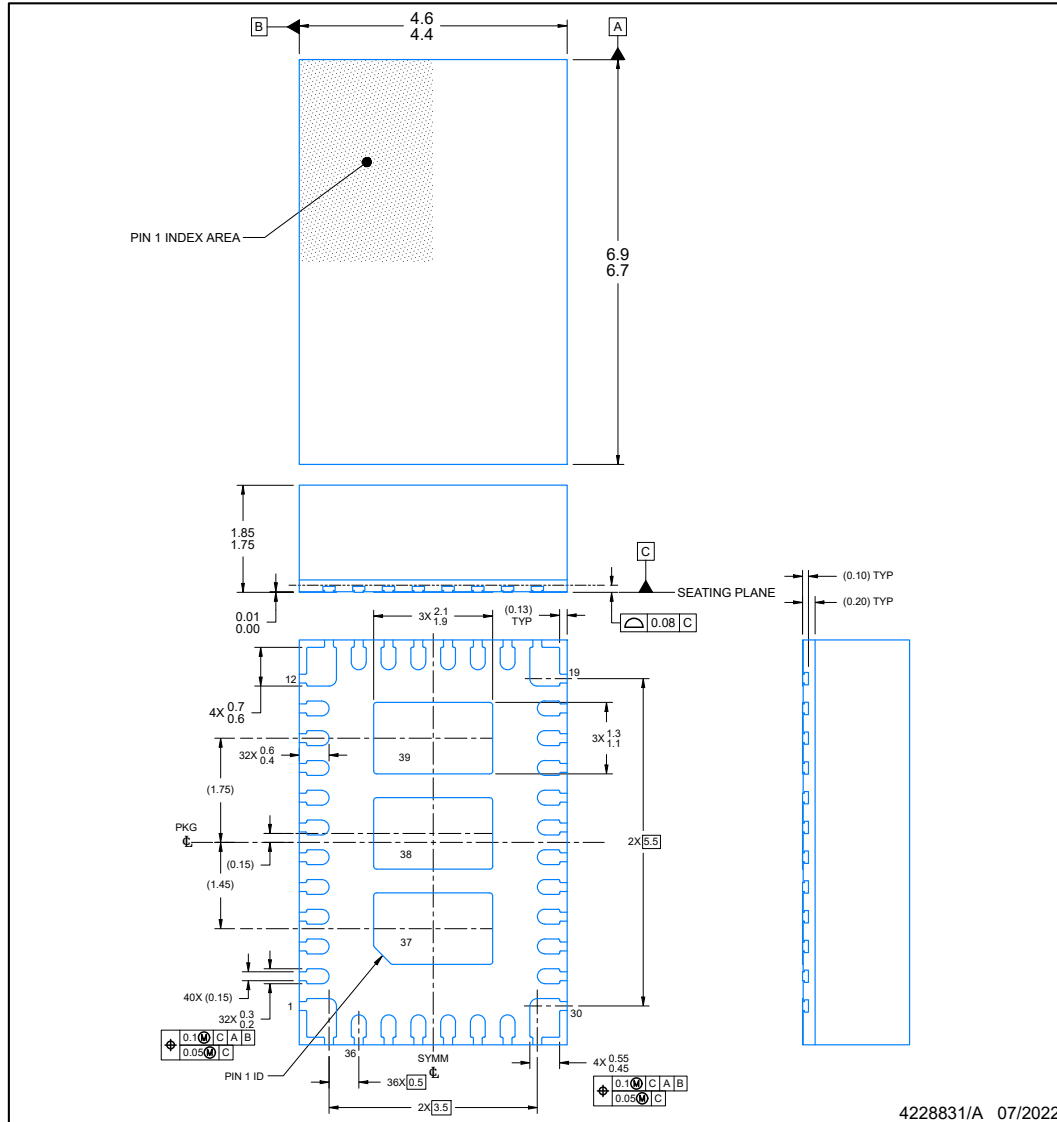
TAPE AND REEL BOX DIMENSIONS



Device	Package Type	Package Drawing	Pins	SPQ	Length (mm)	Width (mm)	Height (mm)
TPSM8287A12BBSRDVR	B0QFN	RDV	39	3000	336	336	48

PACKAGE OUTLINE
RDV0039A **B0QFN - 1.85 mm max height**

PLASTIC QUAD FLAT PACK- NO LEAD



NOTES:

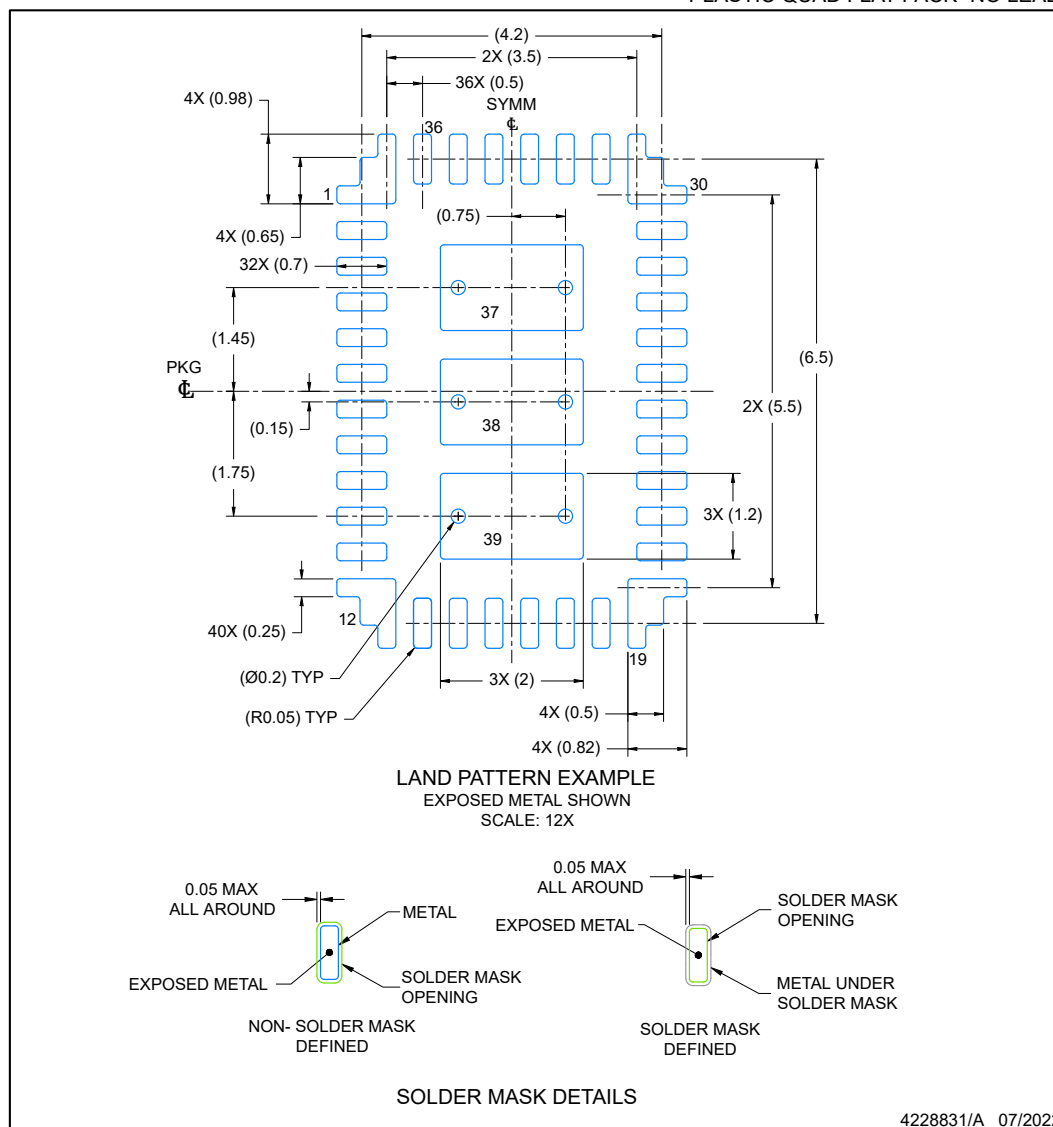
1. All linear dimensions are in millimeters. Any dimensions in parenthesis are for reference only. Dimensioning and tolerancing per ASME Y14.5M.
2. This drawing is subject to change without notice.
3. The package thermal pad must be soldered to the printed circuit board for optimal thermal and mechanical performance.

EXAMPLE BOARD LAYOUT

RDV0039A

B0QFN - 1.85 mm max height

PLASTIC QUAD FLAT PACK- NO LEAD



NOTES: (continued)

- This package is designed to be soldered to a thermal pad on the board. For more information, see Texas Instruments literature number SLUA271 (www.ti.com/lit/sluea271).
- Vias are optional depending on application, refer to device data sheet. If any vias are implemented, refer to their locations shown on this view. It is recommended that vias under paste be filled, plugged or tented.

PACKAGING INFORMATION

Orderable Device	Status (1)	Package Type	Package Drawing	Pins	Package Qty	Eco Plan (2)	Lead finish/ Ball material (6)	MSL Peak Temp (3)	Op Temp (°C)	Device Marking (4/5)	Samples
XPSM8287A12BBSRDVR	ACTIVE	B0QFN	RDV	39	3000	RoHS (In Work) & Green (In Work)			-40 to 125		Samples

(1) The marketing status values are defined as follows:

ACTIVE: Product device recommended for new designs.

LIFEBUY: TI has announced that the device will be discontinued, and a lifetime-buy period is in effect.

NRND: Not recommended for new designs. Device is in production to support existing customers, but TI does not recommend using this part in a new design.

PREVIEW: Device has been announced but is not in production. Samples may or may not be available.

OBSOLETE: TI has discontinued the production of the device.

(2) **RoHS:** TI defines "RoHS" to mean semiconductor products that are compliant with the current EU RoHS requirements for all 10 RoHS substances, including the requirement that RoHS substance do not exceed 0.1% by weight in homogeneous materials. Where designed to be soldered at high temperatures, "RoHS" products are suitable for use in specified lead-free processes. TI may reference these types of products as "Pb-Free".

RoHS Exempt: TI defines "RoHS Exempt" to mean products that contain lead but are compliant with EU RoHS pursuant to a specific EU RoHS exemption.

Green: TI defines "Green" to mean the content of Chlorine (Cl) and Bromine (Br) based flame retardants meet JS709B low halogen requirements of <=1000ppm threshold. Antimony trioxide based flame retardants must also meet the <=1000ppm threshold requirement.

(3) MSL, Peak Temp. - The Moisture Sensitivity Level rating according to the JEDEC industry standard classifications, and peak solder temperature.

(4) There may be additional marking, which relates to the logo, the lot trace code information, or the environmental category on the device.

(5) Multiple Device Markings will be inside parentheses. Only one Device Marking contained in parentheses and separated by a "~" will appear on a device. If a line is indented then it is a continuation of the previous line and the two combined represent the entire Device Marking for that device.

(6) Lead finish/Ball material - Orderable Devices may have multiple material finish options. Finish options are separated by a vertical ruled line. Lead finish/Ball material values may wrap to two lines if the finish value exceeds the maximum column width.

Important Information and Disclaimer: The information provided on this page represents TI's knowledge and belief as of the date that it is provided. TI bases its knowledge and belief on information provided by third parties, and makes no representation or warranty as to the accuracy of such information. Efforts are underway to better integrate information from third parties. TI has taken and continues to take reasonable steps to provide representative and accurate information but may not have conducted destructive testing or chemical analysis on incoming materials and chemicals. TI and TI suppliers consider certain information to be proprietary, and thus CAS numbers and other limited information may not be available for release.

In no event shall TI's liability arising out of such information exceed the total purchase price of the TI part(s) at issue in this document sold by TI to Customer on an annual basis.

IMPORTANT NOTICE AND DISCLAIMER

TI PROVIDES TECHNICAL AND RELIABILITY DATA (INCLUDING DATA SHEETS), DESIGN RESOURCES (INCLUDING REFERENCE DESIGNS), APPLICATION OR OTHER DESIGN ADVICE, WEB TOOLS, SAFETY INFORMATION, AND OTHER RESOURCES "AS IS" AND WITH ALL FAULTS, AND DISCLAIMS ALL WARRANTIES, EXPRESS AND IMPLIED, INCLUDING WITHOUT LIMITATION ANY IMPLIED WARRANTIES OF MERCHANTABILITY, FITNESS FOR A PARTICULAR PURPOSE OR NON-INFRINGEMENT OF THIRD PARTY INTELLECTUAL PROPERTY RIGHTS.

These resources are intended for skilled developers designing with TI products. You are solely responsible for (1) selecting the appropriate TI products for your application, (2) designing, validating and testing your application, and (3) ensuring your application meets applicable standards, and any other safety, security, regulatory or other requirements.

These resources are subject to change without notice. TI grants you permission to use these resources only for development of an application that uses the TI products described in the resource. Other reproduction and display of these resources is prohibited. No license is granted to any other TI intellectual property right or to any third party intellectual property right. TI disclaims responsibility for, and you will fully indemnify TI and its representatives against, any claims, damages, costs, losses, and liabilities arising out of your use of these resources.

TI's products are provided subject to [TI's Terms of Sale](#) or other applicable terms available either on [ti.com](#) or provided in conjunction with such TI products. TI's provision of these resources does not expand or otherwise alter TI's applicable warranties or warranty disclaimers for TI products.

TI objects to and rejects any additional or different terms you may have proposed.

Mailing Address: Texas Instruments, Post Office Box 655303, Dallas, Texas 75265
Copyright © 2023, Texas Instruments Incorporated