

Tous droits strictement reserves. Reproduction ou communication a des tiers
Interdite sous quelque forme que ce soit sans autorisation ecrite du proprietaire.
Propriete de c FCI. Droits de reproduction FCI.

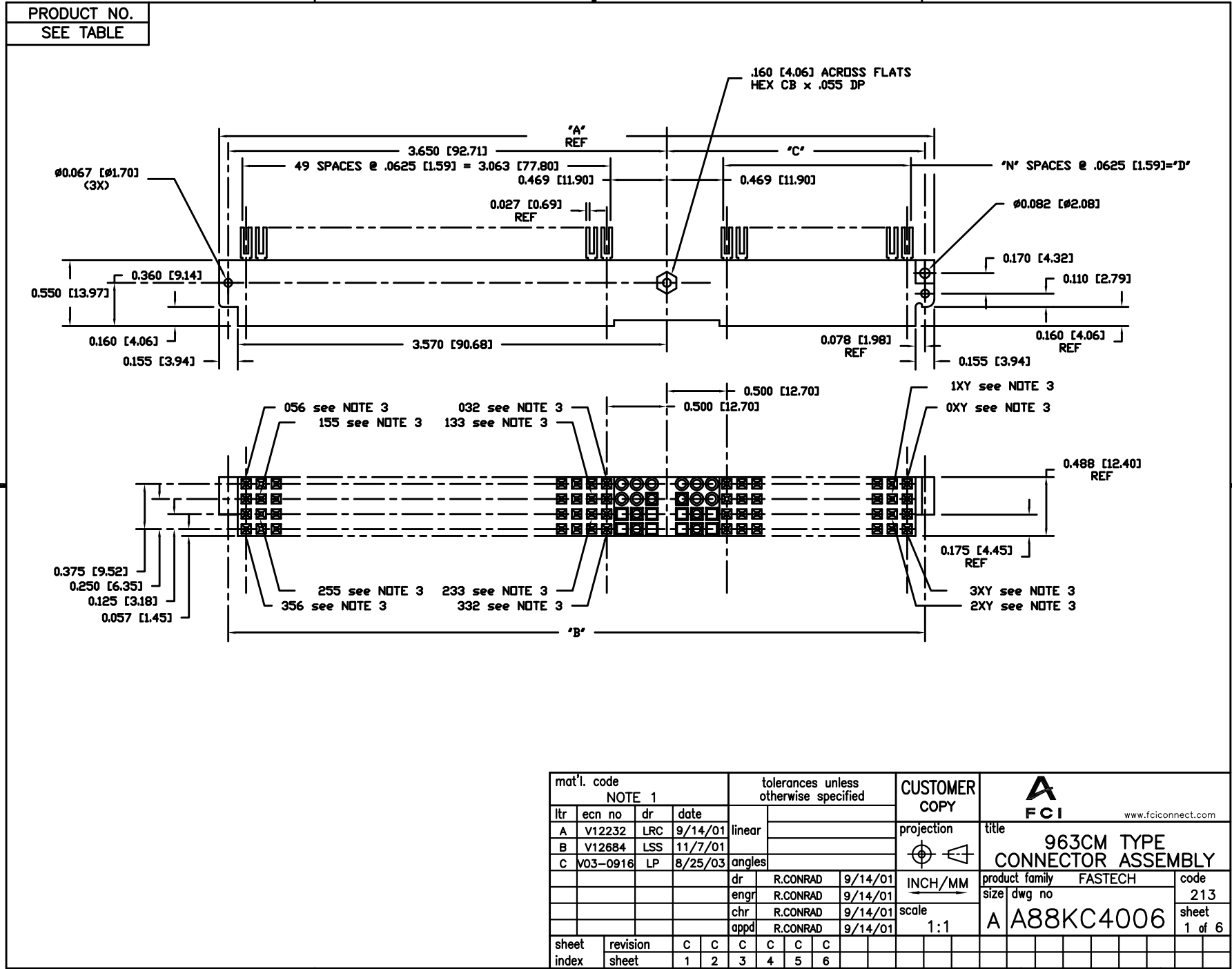
All rights strictly reserved. Reproduction or issue to third parties in any
form whatever is not permitted without written authority from the proprietor.
Property of FCI. Copyright FCI.

A

FCI

A

B



A

B

ACAD

PDM: Rev:C

STATUS: Released

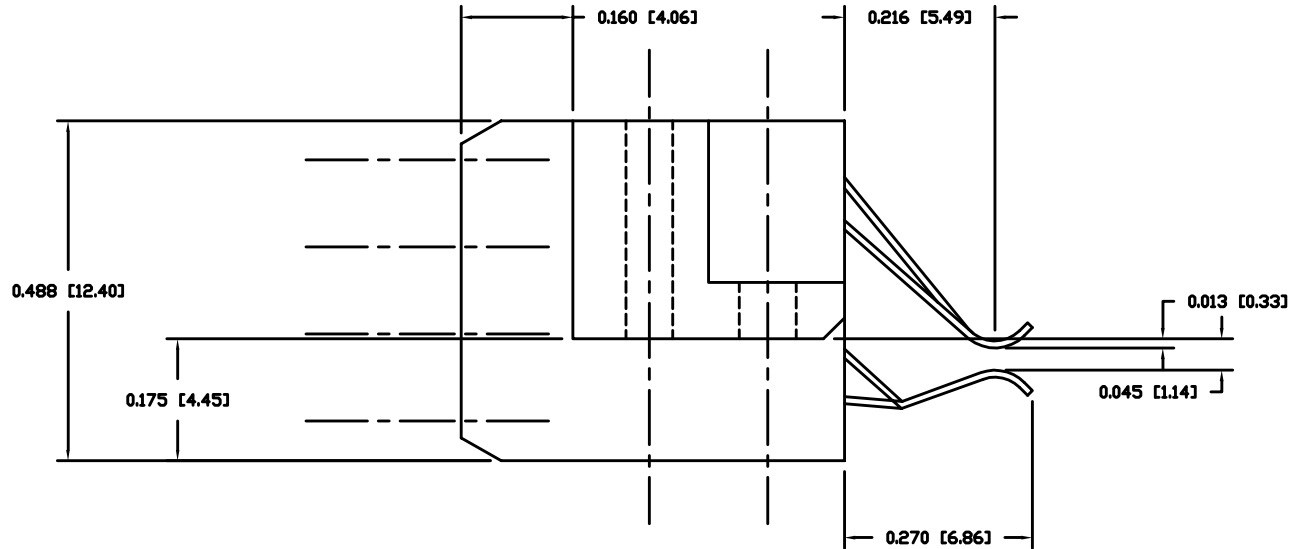
Printed: Feb 24, 2004

TABLE A

PRODUCT NUMBER	DIMENSION				'N'	END ROW NUMBER	CAVITIES LOADED WITH CONTACTS			
	'A' REF	'B' REF	'C' REF	'D'			TOP	SECOND	THIRD	BOTTOM
963CM-104	4.45	4.298	.648	.0625	1	24	024, 032-056	124, 132-156	224, 232-256	324, 332-356
963CM-128	5.20	5.048	1.398	.8125	13	18	018-024, 032-056	118-124, 132-156	218-224, 232-256	318-324, 332-356
963CM-152	5.95	5.798	2.148	1.5625	25	12	012-024, 032-056	112-124, 132-156	212-224, 232-256	312-324, 332-356
963CM-176	6.70	6.548	2.898	2.3125	37	06	006-024, 032-056	106-124, 132-156	206-224, 232-256	306-324, 332-356

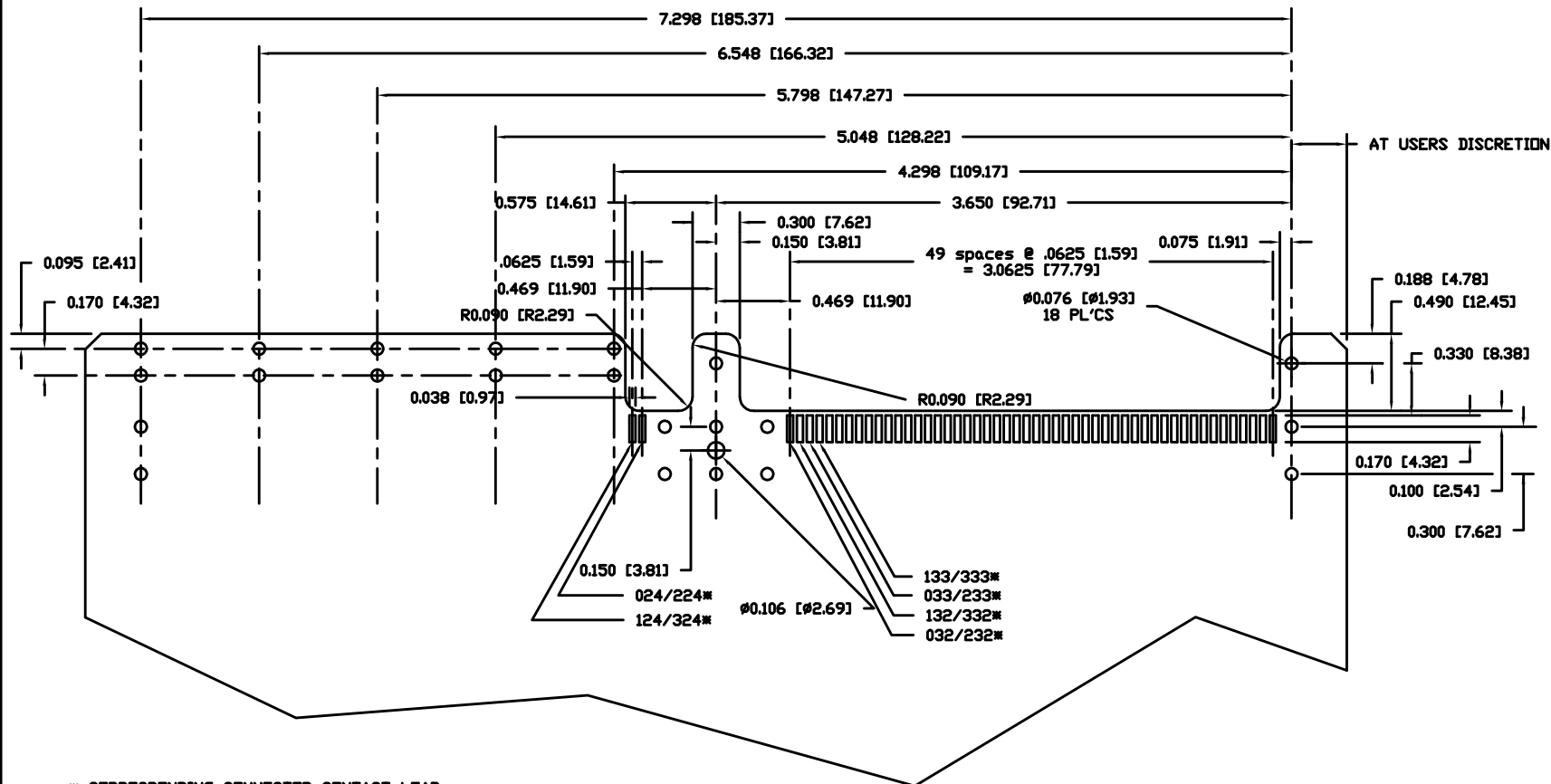
NOTES

- ① INSULATOR MATERIAL: PPS 40% GLASS FILLED, CONTACT MATERIAL: C72500 Au/Pd/Ag INLAY TAIL SOLDER DIPPED
- ② (3) #1-32 x 5/16 BF+ TORX DRIVE FILLESTER HEAD SELF TAPPING SCREW RECOMMENDED FOR ASSEMBLY TO PCB
- ③ AS VIEWED FROM THE MATING FACE OF THE CONNECTOR WITH THE SLOT DOWN EACH CONTACT AND HOUSING CAVITY (EVEN IF NO CONTACT IS PRESENT) IS DESIGNATED BY A 3 DIGIT NUMBER. THE TOP ROW IS NUMBERED, RIGHT TO LEFT, IN TWO GROUPS: 0XY TO 027 & 029 TO 056. THE SECOND ROW IS NUMBERED IN GROUPS 1XY TO 126 & 130 TO 156, SIMILARLY THE THIRD AND FOURTH ROWS ARE NUMBERED 2XY TO 226, & 230 TO 256, 3XY TO 326, & 330 TO 356. THE END ROW NUMBERS XY, DEPENDS ON THE CONNECTOR CODE AND ARE LISTED IN TABLE A.





mat'l. code NOTE 1				tolerances unless otherwise specified				CUSTOMER COPY		 www.fciconnect.com		
ltr	ecn no	dr	date	linear				projection	title			
c									963CM TYPE CONNECTOR ASSEMBLY			
					angles				product family		code	
									FASTECH		213	
				dr	R.CONRAD	9/14/01	INCH/MM	 1:1	size		sheet	
				enrg	R.CONRAD	9/14/01			A A88KC4006		2 of	
				chr	R.CONRAD	9/14/01						
				appd	R.CONRAD	9/14/01						
sheet index		revision sheet										

963CM-104 TYPE RECOMMENDED PC BOARD LAYOUT (COMPONENT SIDE)



✱ CORRESPONDING CONNECTOR CONTACT LEAD
COMPONENT SIDE / NON-COMPONENT SIDE
SAME LOCATION ON THE OPPOSITE SIDE
OF THE PCB. SEE NOTE 3 SHEET 2

mat'l. code				tolerances unless otherwise specified				CUSTOMER COPY		<div><div><div>A</div><div>FCI</div></div><div>www.fciconnect.com</div></div>			
ltr	ecn no	dr	date	linear					projection	title			
c										963CM TYPE CONNECTOR ASSEMBLY			
					angles								
				dr	R.CONRAD	9/14/01		<div>INCH/MM</div>		product family FASTECH		code	
				engr	R.CONRAD	9/14/01				size	dwg no	213	
				chr	R.CONRAD	9/14/01				scale	A A88KC4006		sheet 3 of
				appd	R.CONRAD	9/14/01		1:1					
sheet index		revision sheet											

cage code
22526

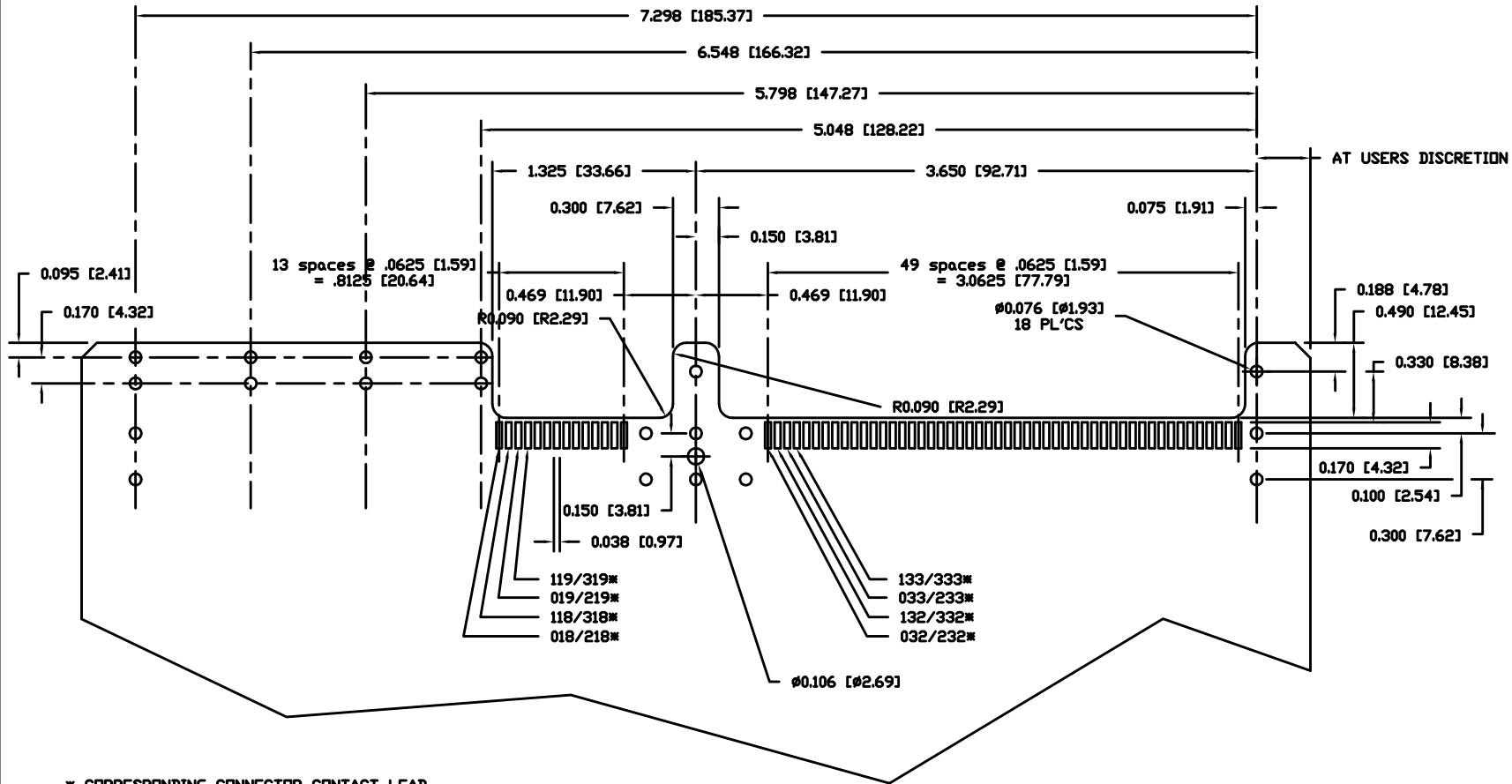
ACAD

PDM: Rev:C



STATUS: **Released**

Printed: Feb 24, 2004

963CM-128 TYPE RECOMMENDED PC BOARD LAYOUT (COMPONENT SIDE)



* CORRESPONDING CONNECTOR CONTACT LEAD COMPONENT SIDE / NON-COMPONENT SIDE SAME LOCATION ON THE OPPOSITE SIDE OF THE PCB. SEE NOTE 3 SHEET 2

mat'l. code				tolerances unless otherwise specified				CUSTOMER COPY		<div><div>A</div><div>FCI</div><div>www.fciconnect.com</div></div>			
ltr	ecn no	dr	date	linear					projection	title			
c										963CM TYPE CONNECTOR ASSEMBLY			
				angles									
					dr	R.CONRAD	9/14/01	INCH/MM		product family		FASTECH	
				enr	R.CONRAD	9/14/01	size		dwg no		213		
				chr	R.CONRAD	9/14/01	scale		A		A88KC4006		sheet 4 of
				appd	R.CONRAD	9/14/01							
sheet index		revision sheet											

cage code 22526

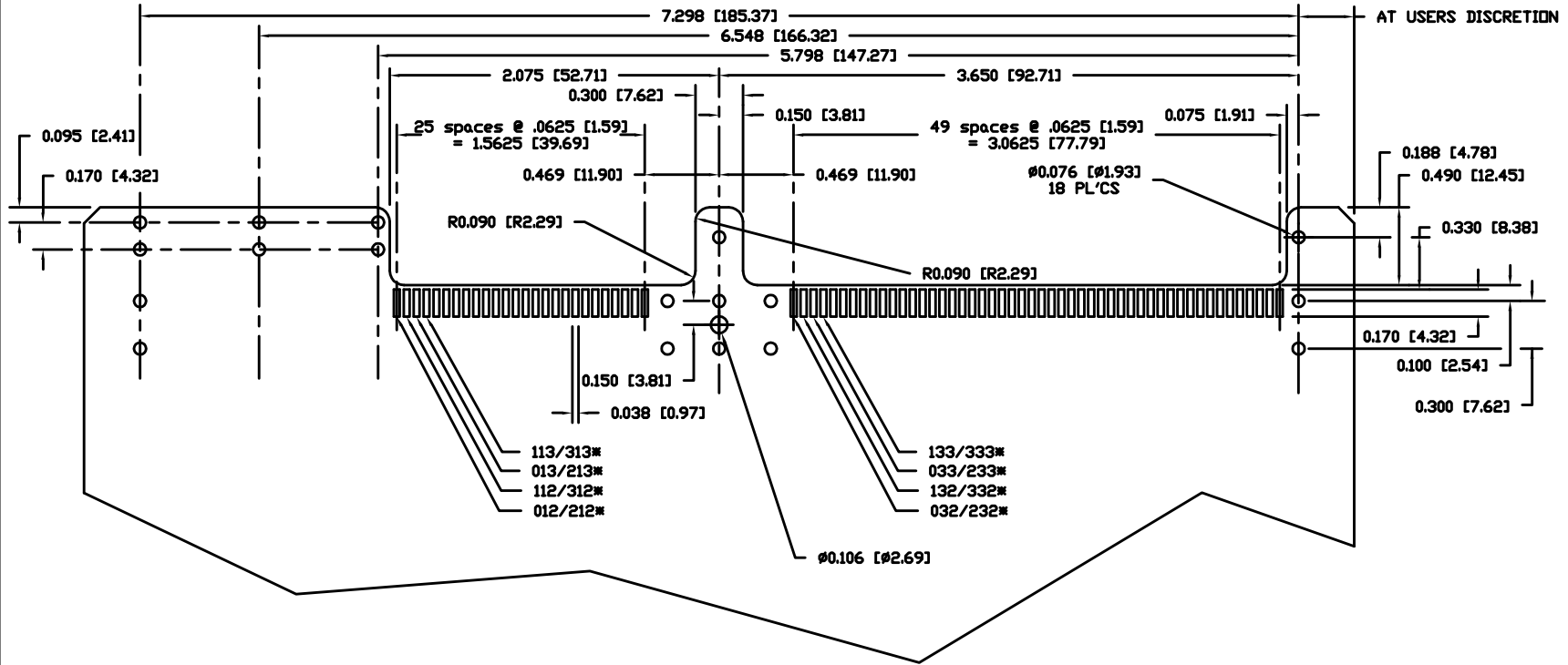
ACAD

PDM: Rev:C



STATUS: Released

Printed: Feb 24, 2004

963CM-152 TYPE RECOMMENDED PC BOARD LAYOUT (COMPONENT SIDE)



* CORRESPONDING CONNECTOR CONTACT LEAD
COMPONENT SIDE / NON-COMPONENT SIDE
SAME LOCATION ON THE OPPOSITE SIDE
OF THE PCB. SEE NOTE 3 SHEET 2

mat'l. code				tolerances unless otherwise specified			CUSTOMER COPY		<div><div>A</div><div>FCI</div><div>www.fciconnect.com</div></div>	
ltr	ecn no	dr	date	linear				projection	title	
c									963CM TYPE CONNECTOR ASSEMBLY	
				angles				 INCH/MM	product family FASTECH	
									size dwg no	
				dr	R.CONRAD	9/14/01	scale 1:1	A	code	
				enr	R.CONRAD	9/14/01			213	
				chr	R.CONRAD	9/14/01			sheet	
				appd	R.CONRAD	9/14/01	5 of			
sheet index		revision sheet								

cage code 22526

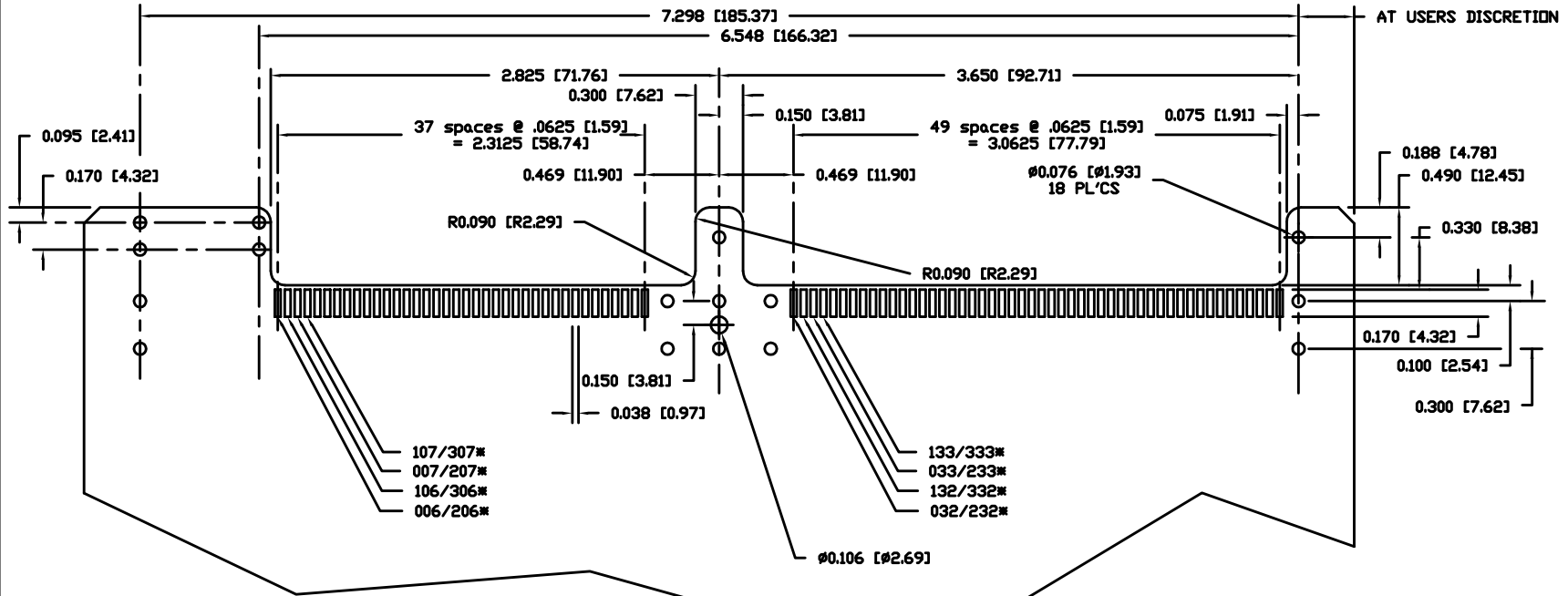
ACAD

PDM: Rev:C



STATUS: Released

Printed: Feb 24, 2004

963CM-176 TYPE RECOMMENDED PC BOARD LAYOUT (COMPONENT SIDE)



* CORRESPONDING CONNECTOR CONTACT LEAD
COMPONENT SIDE / NON-COMPONENT SIDE
SAME LOCATION ON THE OPPOSITE SIDE
OF THE PCB. SEE NOTE 3 SHEET 2

mat'l. code				tolerances unless otherwise specified			CUSTOMER COPY		<div><div>A</div><div>FCI</div><div>www.fciconnect.com</div></div>		
ltr	ecn no	dr	date	linear				projection	title		
c									963CM TYPE CONNECTOR ASSEMBLY		
				angles				 INCH/MM	product family FASTECH		code
				dr	R.CONRAD	9/14/01	scale 1:1		size dwg no		213
				enr	R.CONRAD	9/14/01		A		A88KC4006	sheet
				chr	R.CONRAD	9/14/01					6 of
				appd	R.CONRAD	9/14/01					
sheet index	revision sheet										

cage code
22526

ACAD

PDM: Rev:C

STATUS: Released

Printed: Feb 24, 2004