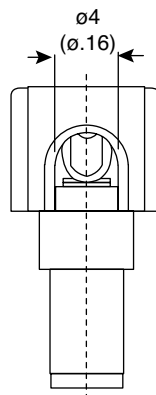
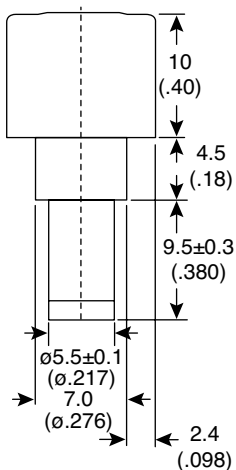
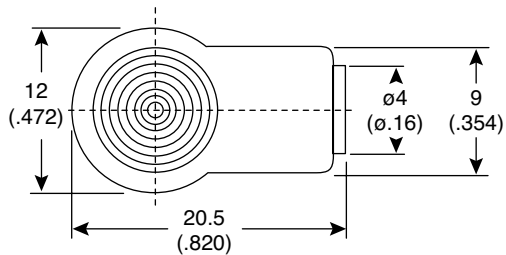
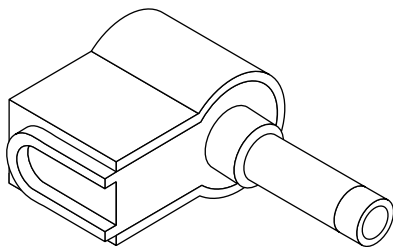


DC Power Plugs

171-3215-EX, 171-3216-EX

KOBICONN

DC Power Plugs



Dimensions: mm (in.)

SPECIFICATIONS

Type:	right angle DC power solder terminal
Right angle application:	2.1±0.1mm (171-3215)-EX
	2.5±0.05mm (171-3216)-EX
Max. Cable Size:	24 Awg
Contact resistance:	50mΩ max.
Insulation resistance:	100MΩ min.
Breakdown voltage:	500VAC
DC power & temperature rating:	12VDC 0.5A
Color:	Black
Lug Hole Size:	0.9mm-1mm dia.
Contacts A, B, & terminal:	Nickel Plated Brass
Insulator:	ABS
Cap:	PVC
Operating temperature:	-25°C ~ +70°C
RoHS Compliant by Exemption	

Date Last Revised: 10-15-14

Available from Mouser Electronics
1-800-346-6873 / www.mouser.com

KC-300907

171-3215-EX, 171-3216-EX

Specifications are subject to change without notice. No liability or warranty implied by this information. Environmental compliance based on producer documentation.

Mouser Electronics

Authorized Distributor

Click to View Pricing, Inventory, Delivery & Lifecycle Information:

Kobiconn:

[171-3216-EX](#) [171-3215-EX](#)