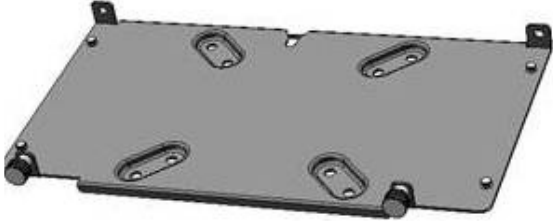
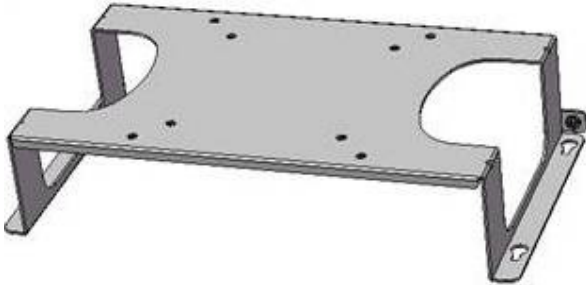


Mounting Bracket options for ARK-DS303 (Jan'11)

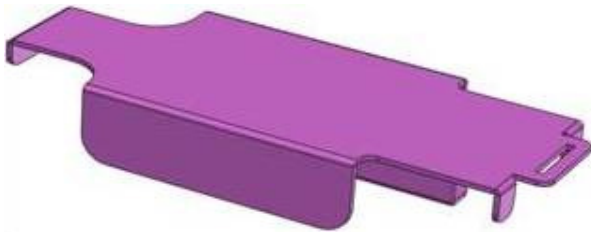
1. VESA mount bracket(mounting behind the panel):PN#1960047304N001



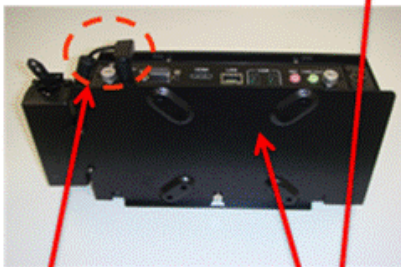
2. ARM bracket: PN#1960047305N001



3. Adapter bracket(if customer need to mount adapter with ARK-DS303):PN# 1960047306N001



Optional VESA Mount



Optional VESA mount bracket
Which can accommodate power adaptor/cord

Power-lock bracket to secure the contact