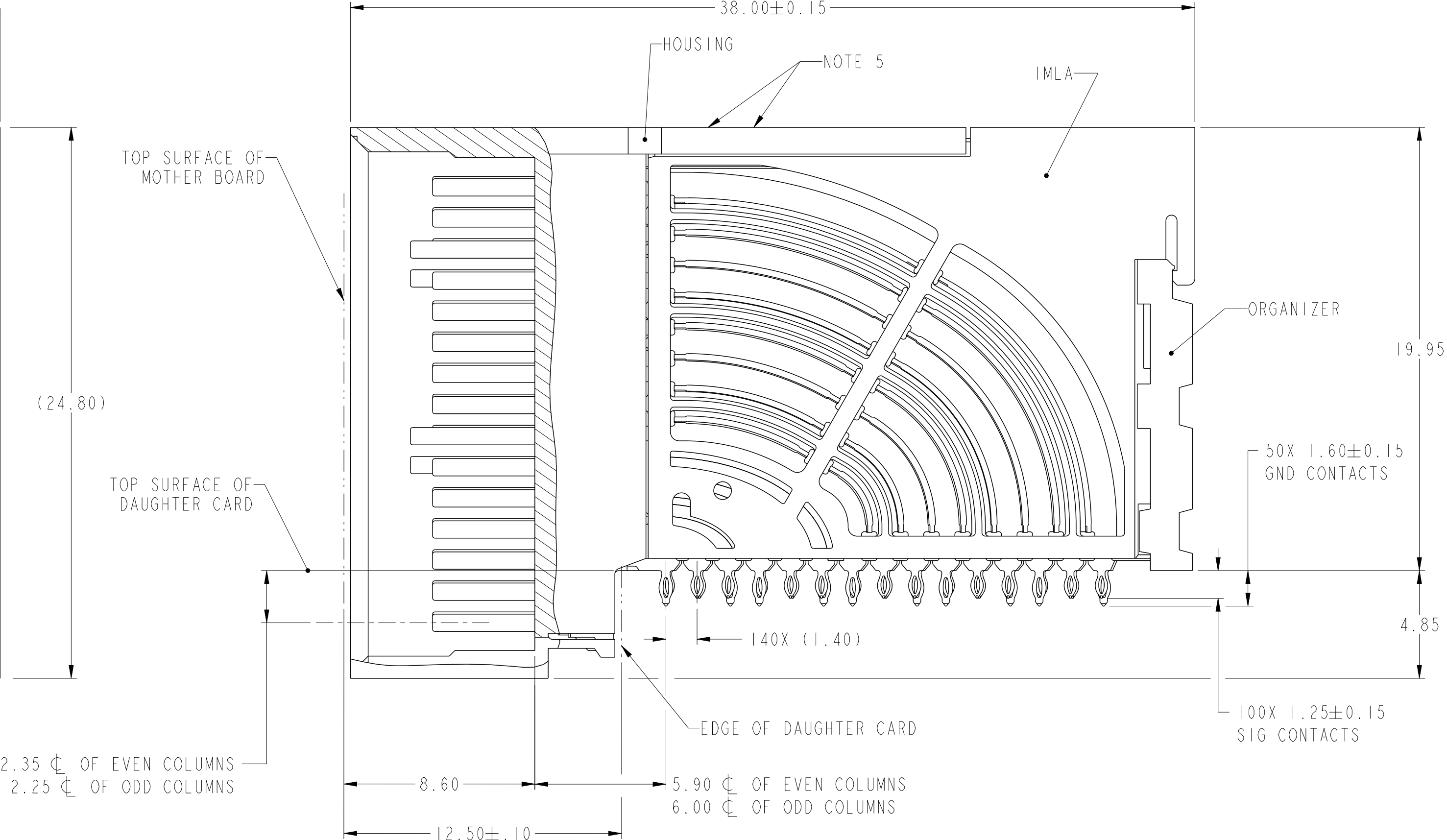
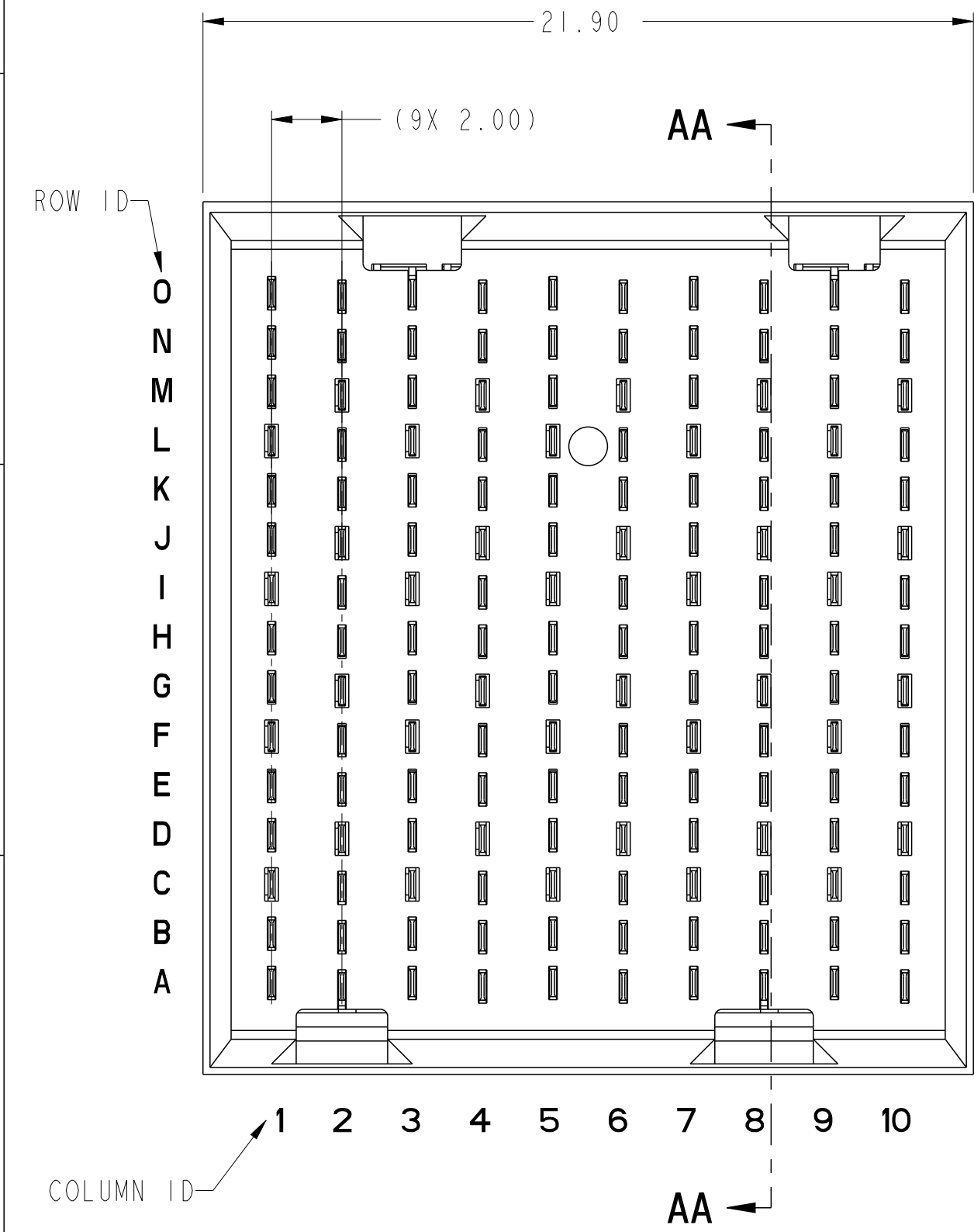






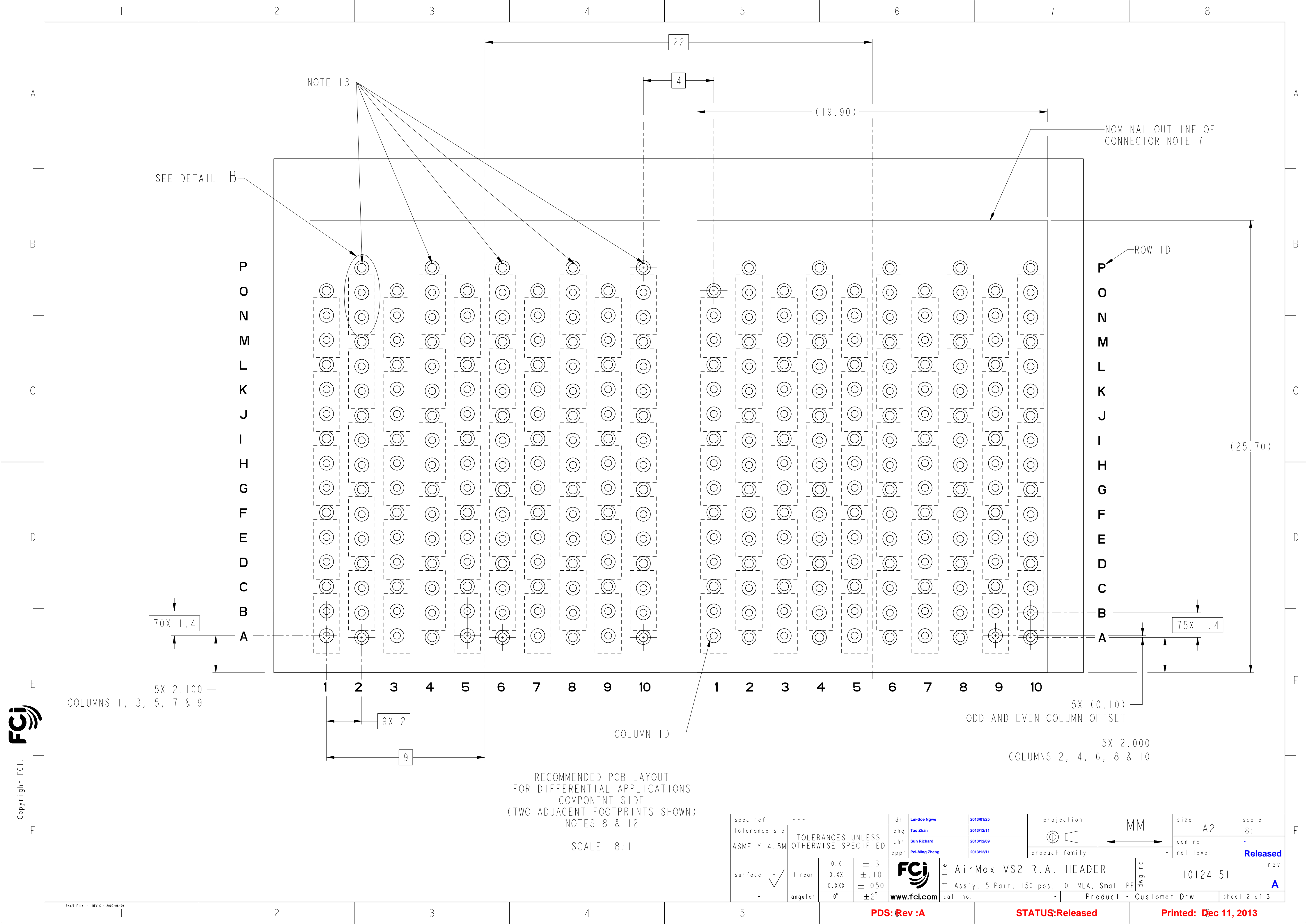
PRODUCT NUMBER
SEE SHEET 3



SECTION AA-AA

Copyright FCI.
FCI

spec ref		---		dr		Lin-Soe Ngwe		2013/01/25		projection		MM		size		A2		scale		10:1															
tolerance std		TOLERANCES UNLESS OTHERWISE SPECIFIED		eng		Tao Zhan		2013/12/11						ecn no		-		Released																	
ASME Y14.5M				chr		Sun Richard		2013/12/09						rel level																					
				appr		Pei-Ming Zheng		2013/12/11		product family		-																							
surface				linear		0.X ±.3		0.XX ±.10		0.XXX ±.050				title		AirMax VS2 R.A. HEADER		dwg no		10124151		rev													
				angular		0° ±2°		www.fci.com		cat. no.		-		Product - Customer Drw		sheet 1 of 3																			



NOTE 13

SEE DETAIL B

NOMINAL OUTLINE OF CONNECTOR NOTE 7

ROW ID

COLUMN ID

70X 1.4

75X 1.4

5X 2.100
COLUMNS 1, 3, 5, 7 & 9

9X 2

5X (0.10)
ODD AND EVEN COLUMN OFFSET

5X 2.000
COLUMNS 2, 4, 6, 8 & 10

RECOMMENDED PCB LAYOUT
FOR DIFFERENTIAL APPLICATIONS
COMPONENT SIDE
(TWO ADJACENT FOOTPRINTS SHOWN)
NOTES 8 & 12

SCALE 8:1

spec ref			---		dr		Lin-Soe Ngwe		2013/01/25		projection				MM		size		A2		scale		8:1						
tolerance std			TOLERANCES UNLESS OTHERWISE SPECIFIED			eng		Tao Zhan		2013/12/11						ecn no		-		rel level		Released							
ASME Y14.5M						chr		Sun Richard		2013/12/09														appr		Pei-Ming Zheng		2013/12/11	
surface			- ✓			linear						title			AirMax VS2 R.A. HEADER			dwg no			10124151			rev			A		
-			angular			0°			±2°			www.fci.com			cat. no.			-			Product - Customer Drw			sheet 2 of 3					

PDS: Rev :A

STATUS:Released

Printed: Dec 11, 2013

