

4

3

2

1

THIS DRAWING IS UNPUBLISHED.

RELEASED FOR PUBLICATION

© COPYRIGHT

ALL RIGHTS RESERVED.

LOC

DIST

REVISIONS

P	LTR	DESCRIPTION	DATE	DWN	APVD
	A1	ECR-14-001601	04FEB2014	GK	HMR

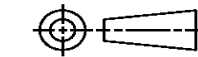
REPLACED BY OCEAN STYLE APPLICATOR PART
NUMBER 2266079-1

FOR REPLACEMENT PARTS FOR APPLICATOR 1852134
REFER TO ADDITIONAL PAGE(S). SPARE PARTS KIT (IF LISTED)
WILL REMAIN AVAILABLE.

THE REPLACEMENT OCEAN STYLE APPLICATOR HAS THE
SAME TERMINATOR/PRESS INTERFACE AS APPLICATOR
1852134

THIS DRAWING IS A CONTROLLED DOCUMENT.		DWN	GOPALAKRISHNA HV		
		CHK	RAGHAVENDRA		
		APVD	RAGHAVENDRA		
		PRODUCT SPEC			
		APPLICATION SPEC			
		WEIGHT			
		CUSTOMER DRAWING			SCALE
		SHEET 1 OF 2			REV A1

TE Connectivity	
SIDE FEED HDM APPLICATOR	
SIZE	CAGE CODE
DRAWING NO	RESTRICTED TO
A3	©- 1852134

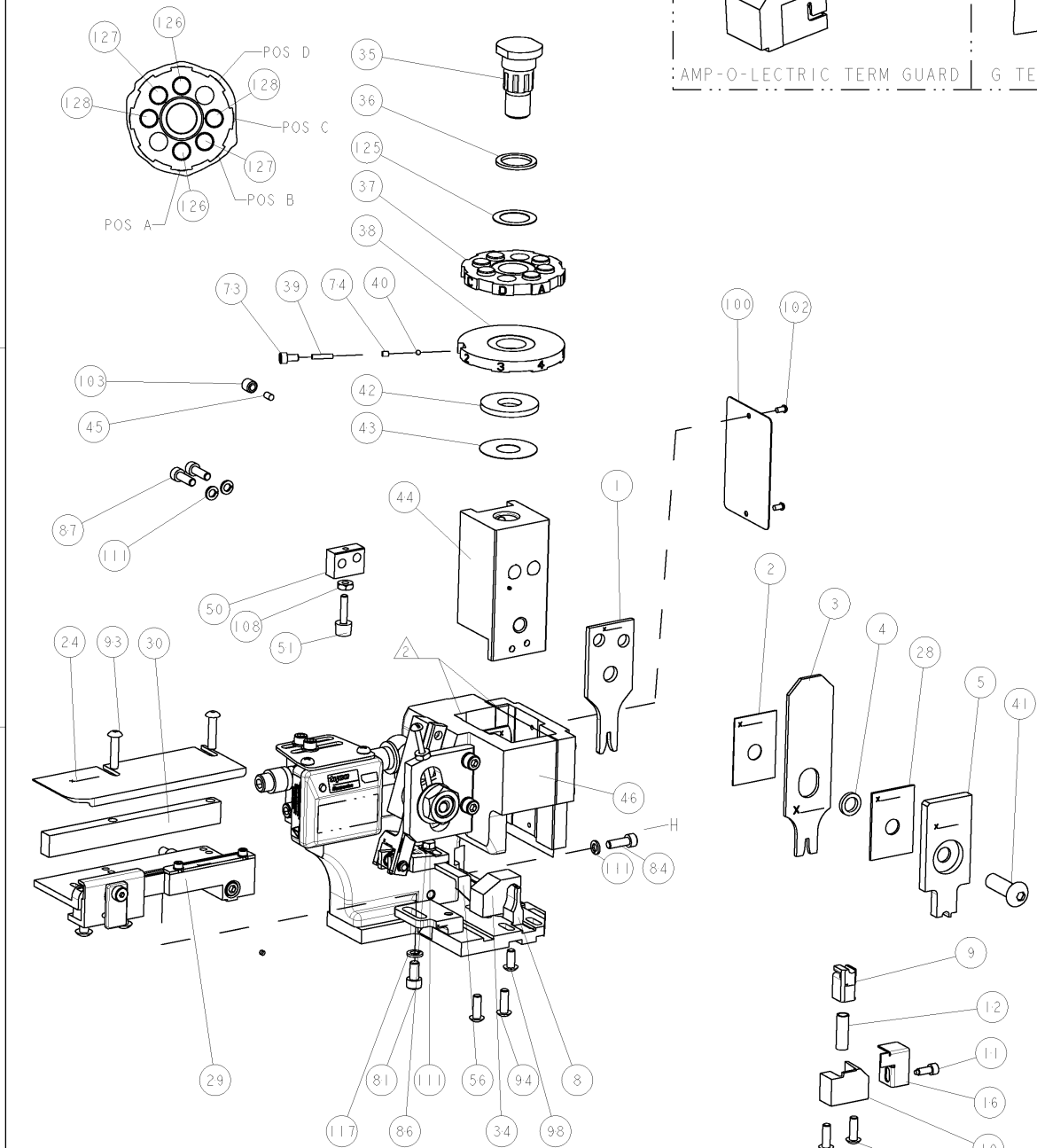


MATERIAL

FINISH

0 PLC ±
1 PLC ±
2 PLC ±
3 PLC ±
4 PLC ±
ANGLES ±

PART NUMBER		REV	FIRST USED	POWER UNIT	FEED TYPE
1852134-1		A	122500-1	LEADMAKER	POST FEED
1852134-2		A	565435-5	BENCH MODEL K	PRE FEED
1852134-3		A	354500-1	BENCH MODEL G	PRE FEED



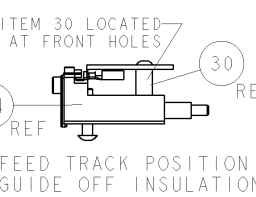
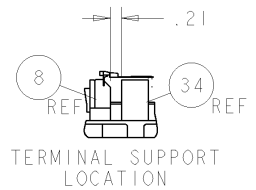
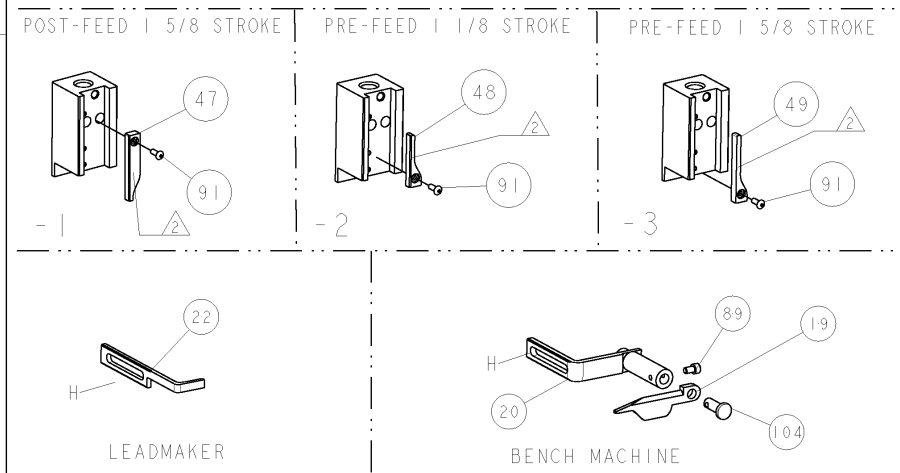
- 1 RECOMMENDED SPARE PARTS
 2 GREASE LIGHTLY
 3 GUARD MUST BE IN PLACE WHEN OPERATING APPLICATOR IN A BENCH MACHINE

ITEM NO	QTY	UNIT	PART NO	DESCRIPTION
1	1	EA	4-354779-0	PIN, WIRE DISC, .3190
2	2	EA	2-354779-9	PIN, WIRE DISC, .3135
2	2	EA	1-354779-4	PIN, WIRE DISC, .3060
1	1	EA	986950-1	WASHER, FLAT PRECISION
1	1	EA	217238-1	GENERAL INSTRUCTION PKG
1	1	EA	4088040	SF APPL INST 408-8040
2	2	EA	21024-5	WASHER, SPRG LOCK, REG NO 10
4	4	EA	21024-4	WASHER, SPRG LOCK, REG NO 8
1	1	EA	21018-5	NUT, HEX, REG 6-32
1	1	EA	992031-1	PIN, CLEVIS
1	1	EA	21009-2	SCR, SET, SELF LOCKING 1/4-20 X .250
2	2	EA	21017-2	SCREW, DRIVE
1	1	EA	461264-1	PLATE, IDENTIFICATION
1	1	EA	22733-8	SCR, BHSC, SELF-LOCKING, 8-32 X .375
4	4	EA	2-21002-2	SCR, BTN SKT HD CAP 8-32 X .500
2	2	EA	2-21002-4	SCR, BTN SKT HD CAP 8-32 X .750
1	1	EA	1-21002-7	SCR, BTN SKT HD CAP 6-32 X .375
1	1	EA	7-21000-9	SCR, SKT HD CAP 4-40 X .188
2	2	EA	2-21000-7	SCR, SKT HD CAP 8-32 X .500
1	1	EA	2-22603-0	SCR, HEX HD CAP 8-32 X .312
1	1	EA	2-21000-7	SCR, SKT HD CAP 8-32 X .500
1	1	EA	3-21000-4	SCR, SKT HD CAP 10-32 X .375
1	1	EA	455749-1	GUARD WINDOW
1	1	EA	679532-1	INSERT, GUARD
1	1	EA	690603-1	SPRING ASSIST AMP-O-MATOR APPLICATOR
3	2	EA	U/M	PART NO
3	2	EA	U/M	DESCRIPTION

TERMINAL NAME: MSTBC-MT 0.5-1.0 BA			
AMP P/N	PHOENIX P/N	PHOENIX TERMINAL - AMP CRIMP SPECS	
1572806	3190645		
-	-	PAD LTR	CRIMP HEIGHT
-	-	A	.058±.002[1.47±0.05mm]
-	-	B	.051±.002[1.30±0.05mm]
-	-	C	.046±.002[1.17±0.05mm]
-	-	D	-
-	-	CRIMP	SIZE
-	-	WIRE	.080 [2.03mm]
-	-	INSUL	.090 [2.29mm]
-	-	FEED	556
-	-	APPL INSTRUCTIONS	408-8040
-	-	SET UP GAGE	458637-1
WIRE STRIP LENGTH	TERM APPL SPEC	FEED	APPL INSTRUCTIONS
.137 - .152	NONE	556	408-8040
			SET UP GAGE
			458637-1

LOC	DIST	REV	DESCRIPTION	DATE	OWN	APPD
A	66		RELEASED	030CT2005	RK	TE

1	1	EA	23030-1	SCR, SKT HD CAP 6-32 X .25	73
1	1	EA	-	-	72
1	1	EA	-	-	71
1	1	EA	-	-	70
1	1	EA	-	-	69
1	1	EA	-	-	68
1	1	EA	-	-	67
1	1	EA	-	-	66
1	1	EA	-	-	65
1	1	EA	-	-	64
1	1	EA	-	-	63
1	1	EA	-	-	62
1	1	EA	-	-	61
1	1	EA	-	-	60
1	1	EA	-	-	59
1	1	EA	-	-	58
1	1	EA	-	-	57
1	1	EA	458537-2	PAWL, FEED	56
1	1	EA	-	-	55
1	1	EA	-	-	54
1	1	EA	-	-	53
1	1	EA	-	-	52
1	1	EA	811242-2	BUMPER, HOLD DOWN	51
1	1	EA	690753-1	SPACER, TONKER	50
1	1	EA	690602-6	CAM, PRE FEED, 1 5/8	49
1	1	EA	690602-5	CAM, PRE FEED, 1 1/8	48
1	1	EA	690501-4	CAM, POST FEED, 1 5/8	47
1	1	EA	459456-1	APPL. BASIC SUB ASSY (SIDE WISE MOCA)	46
1	1	EA	690191-1	PLUG, NYLON	45
1	1	EA	455673-1	RAM, SIDE FEED	44
1	1	EA	690125-1	SHIM SUB-ASSY	43
1	1	EA	690124-1	WASHER, RAM (.115)	42
1	1	EA	7-21002-9	SCR, BTN SKT HD CAP 5/16-24 X 1.00	41
1	1	EA	23241-6	BALL, STEEL	40
1	1	EA	690170-1	SPRING, COMPRESSION	39
1	1	EA	690142-1	DISC, INSULATION	38
1	1	EA	354777-1	WIRE DISC, ASSEMBLY	37
1	1	EA	22480-5	SPRING, COMPRESSION	36
1	1	EA	690212-1	POST, RAM	35
1	1	EA	690786-3	TERMINAL SUPPORT	34
1	1	EA	-	-	33
1	1	EA	-	-	32
1	1	EA	-	-	31
1	1	EA	1-1320908-5	SPACER, STRIP GUIDE	30
1	1	EA	1633091-1	SUB-ASSEMBLY, FEEDTRACK	29
1	1	EA	1-455888-0	SPACER, CRIMPER	28
1	1	EA	-	-	27
1	1	EA	-	-	26
1	1	EA	-	-	25
1	1	EA	1320928-3	PLATE, STRIP GUIDE	24
1	1	EA	-	-	23
1	1	EA	690472-2	STRIPPER	22
1	1	EA	-	-	21
1	1	EA	679218-1	STRIPPER/ WIRE STOP ASSY	20
1	1	EA	458949-1	STRIPPER, SIDE	19
1	1	EA	-	-	18
1	1	EA	-	-	17
1	1	EA	318563-1	GUARD, FRONT CHIP	16
1	1	EA	-	-	15
1	1	EA	-	-	14
1	1	EA	-	-	13
1	1	EA	5-22280-0	SPRING, COMPRESSION	12
1	1	EA	690461-1	STOP, SHEAR	11
1	1	EA	690459-1	SHEAR HOLDER, FRONT	10
1	1	EA	462006-2	FLOATING SHEAR, FRONT	9
1	1	EA	1633109-9	ANVIL, COMBINATION .080	8
1	1	EA	-	-	7
1	1	EA	-	-	6
1	1	EA	1-455889-4	DEPRESSOR, SHEAR	5
1	1	EA	2-238011-2	BLOCK, CRIMPER SPACER	4
1	1	EA	6-456134-3	CRIMPER, INSULATION F PREMIUM	3
1	1	EA	455888-4	SPACER, CRIMPER	2
1	1	EA	1-456405-6	CRIMPER, WIRE PREMIUM	1



AMP 4805 REV 31MAR2000

Mouser Electronics

Authorized Distributor

Click to View Pricing, Inventory, Delivery & Lifecycle Information:

[TE Connectivity:](#)

[1852134-3](#)