

**MICRO SWITCH**  
a Honeywell Division

FED. MFG. CODE 91929

# SWITCH-BASIC

CATALOG LISTING

**6XE27-1**

CATALOG LISTING  
**6XE27-1**

PAGE 1 OF 1

REPLACES

RELEASE NO. PR-1848

**M**

ISSUE  
**5**

CHECK

REVISIONS

A	CO-1
K	D R
5	JUN 95
B	0063672
KNR	20APR10

CHECK

20APR10

CMH

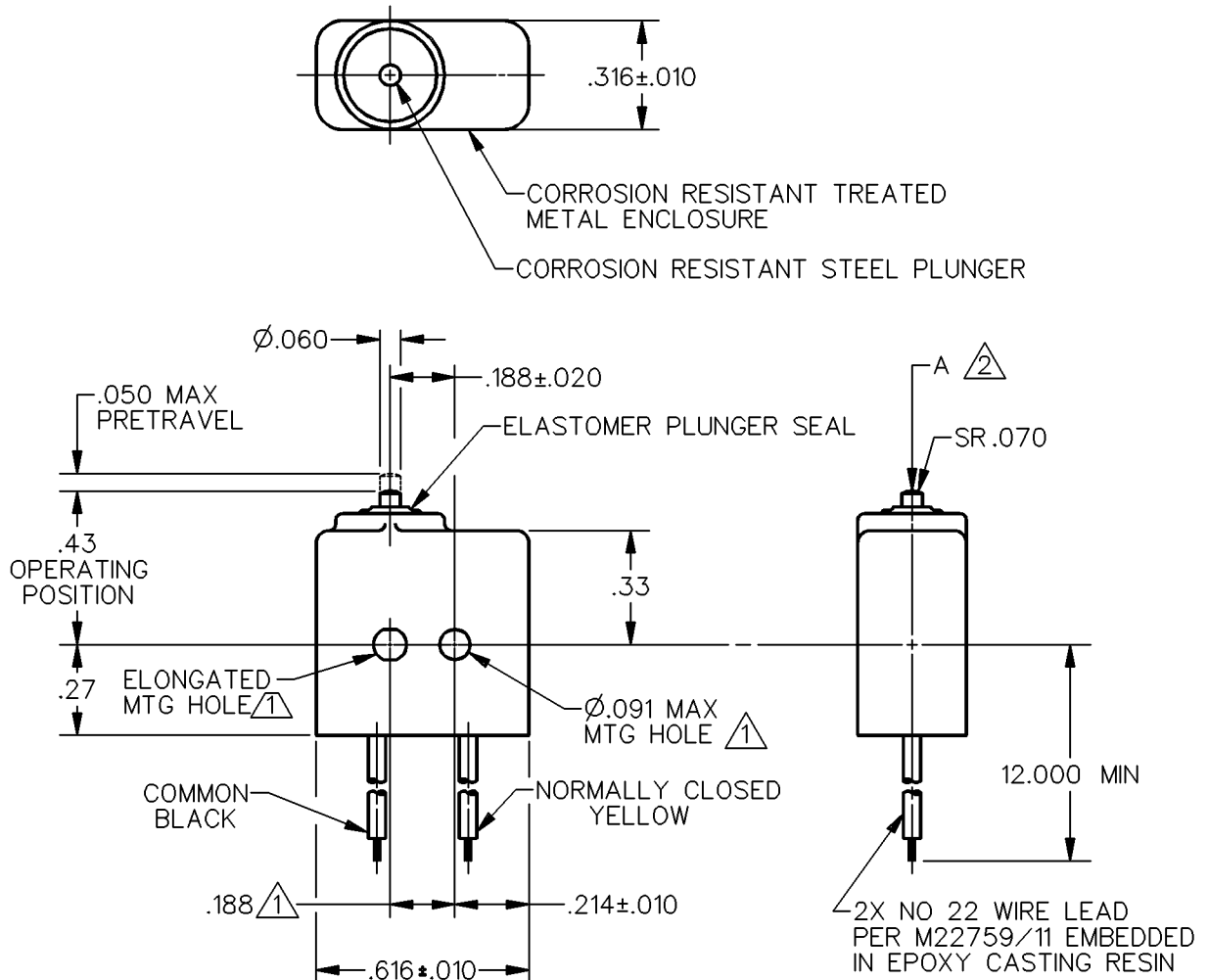
CHECK

5 JUN 95

K D R

RASTER

RELEASE NO. PR-1848



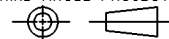
## NOTES

- ① MOUNTING HOLES WILL ACCEPT  $\phi .087$  MAX PINS OR SCREWS ON  $.188 \pm .002$  CENTERS
- ② ACTUATION IN LINE WITH ARROW "A" IS RECOMMENDED
- ③ WEIGHT OF SWITCH ONLY IS .16 OZ MAX. WEIGHT OF SWITCH WITH WIRE LEADS IS 4.00 OZ MAX

ANSI Y14.5M-1982 APPLIES

THIS DRAWING COVERS A PROPRIETARY ITEM AND IS THE PROPERTY OF MICRO SWITCH, A DIVISION OF HONEYWELL. THIS DRAWING IS NOT TO BE COPIED OR USED WITHOUT THE APPROVAL OF MICRO SWITCH.

THIRD ANGLE PROJECTION



CHARACTERISTICS	ELECTRICAL DATA	SCALE 2 TO 1	DO NOT SCALE PRINT
OPERATING FORCE — — — 10 OZ MAX	CONTACT ARRANGEMENT S P N C	<b>UNLESS OTHERWISE SPECIFIED TOLERANCES ARE</b>	
RELEASE FORCE — — — 2 OZ MIN		ONE PLACE ( .0 )	$\pm .030$
RELEASE TRAVEL — — — .004 MIN		TWO PLACE ( .00 )	$\pm .015$
DIFFERENTIAL TRAVEL — — .005 MAX		THREE PLACE ( .000 )	$\pm .005$
OVERTRAVEL — — — .004 MIN		ANGLES	$\pm$
		WEIGHT ③	

# Mouser Electronics

Authorized Distributor

Click to View Pricing, Inventory, Delivery & Lifecycle Information:

[Honeywell:](#)

[6XE27-1](#)