

1825095-1 Product Details

[Share](#) [Print](#) [Email](#)


1825095-1
(TP11CGPC004)
TE Internal Number:
1825095-1
[Active](#)

Pushbutton Switches

[Always EU RoHS/ELV Compliant \(Statement of Compliance\)](#)

Product Highlights:

- Switch
- Tactile
- Single Pole - Single Throw Configuration (Pole-Throw)
- Contact Rating = 0.4VA
- Process Sealed

[View all Features](#)

Quick Links

- ▶ [Pricing & Availability](#)
- ▶ [Search for Tooling](#)
- ▶ [Product Feature Selector](#)
- ▶ [Contact Us About This Product](#)

[Add to My Part List](#)

[Request Sample](#)

[Find Similar Products](#)

[Buy Product](#)

Documentation & Additional Information

Product Drawings:

- [PUSHBUTTON SWITCH, TP SERIES](#) (PDF, English)

Catalog Pages/Data Sheets:

- None Available

Product Specifications:

- None Available

Application Specifications:

- None Available

Instruction Sheets:

- None Available

CAD Files:

- None Available

[List all Documents](#)

Related Products:

- [Tooling](#)

Product Features (Please use the Product Drawing for all design activity)

Product Type Features:

- Product Type = Switch
- Tactile = Yes
- [Series](#) = TP
- Mount Angle = Vertical
- Termination Type = Printed Circuit
- Actuator Style = Rectangular

Electrical Characteristics:

- Contact Rating = 0.4VA

Body Features:

- Mount Style = Through-Hole
- Actuator Profile = Flush
- Actuator Color = Black
- Case Material = Thermoplastic (LCP)
- Actuator Material = Nylon

Contact Features:

- Contact Plating = Gold

Configuration Features:

- Configuration (Pole-Throw) = Single Pole - Single Throw
- Operating Function = Off [On]
- Ganged = No
- ESD Grounding Terminal = Without
- Number of Actuators = Single
- Illuminated = No
- Dust Proof = No
- Support Bracket = Without
- Snap Action = Without

Industry Standards:

- [RoHS/ELV Compliance](#) = RoHS compliant, ELV compliant
- [Lead Free Solder Processes](#) = Wave solder capable to 260°C, Wave solder capable to 240°C, Wave solder capable to 265°C
- RoHS/ELV Compliance History = Always was RoHS compliant

- Contact Base Material = Copper Alloy

Housing Features:

- Process Sealed = Yes
- Low Profile = No

Conditions for Usage:

- Temperature Rating = Standard

Operation/Application:

- Actuator Force (g [oz]) = 50.00 – 400.00 [1.770 – 14.120]

Packaging Features:

- Packaging Method = Loose Piece/Bulk

Other:

- Brand = Alcoswitch

Corporate Information

[About TE](#)
[Investors](#)
[News Room](#)
[Supplier Portal](#)
[Careers](#)
[Terms & Conditions](#)
[Privacy Policy](#)

Quick Links

[Distributor Inventory](#)
[Product Cross Reference](#)
[Documents & Drawings](#)
[Product Compliance Support Center](#)
[Site Map](#)

Customer Support

[Email or Chat With Us](#)
[Find a Phone Number](#)
[Knowledge Base](#)
[Manage Your Account](#)

Keep Me Informed



THIS DRAWING IS UNPUBLISHED.

RELEASED FOR PUBLICATION

© COPYRIGHT - By -

ALL RIGHTS RESERVED.

LOCAD

DIST00

REVISIONS

| P | LTR | DESCRIPTION | DATE | DWN | APVD |
|---|-----|---------------------------|---------|-----|------|
| | A1 | REVISED PER ECO-11-004917 | 11MAR11 | RK | HMR |

MATERIALS

| COMPONENT NAME | BASE MATERIAL | FINISH |
|----------------------------------|--|--|
| CASE | LCP, BLACK, UL94 V-0 | |
| TERMINAL, WIRE LUG (GOLD) | BRASS | GOLD OVER NICKEL |
| TERMINAL, PC & RA (GOLD) | BRASS | GOLD OVER NICKEL IN CONTACT AREA, TIN OVER NICKEL IN SOLDER AREA |
| TERMINAL, WIRE LUG & PC (SILVER) | SILVER CLAD COPPER | SILVER OVER NICKEL |
| CONTACT (GOLD) | COPPER ALLOY OR BRASS | GOLD OVER NICKEL |
| CONTACT (SILVER) | SILVER CLAD COPPER OR COPPER | SILVER OVER NICKEL |
| FRAME | STEEL | TIN OVER COPPER |
| SPRING | MUSIC WIRE | |
| PLUNGER BUTTON | NYLON 6/6, BLACK, RED OR BLUE, UL94 HB | |
| GUIDE, CC & FF SWITCHES ONLY | NYLON 6/6, WHITE | |

SPECIFICATIONS

| | |
|--------------------------------|---|
| RATING | GOLD: .4VA MAX. @ 20VDC OR PEAK AC RESISITIVE |
| | SILVER: 1A @ 125VAC OR 28 VDC RESISTIVE |
| INITIAL TERMINATION RESISTANCE | 20 MILLIOHMS MAX. |
| INSULATION RESISTANCE | 1,000 MEGOHMS MIN @ 500 VDC |
| DIELECTRIC STRENGTH | 1,000 VOLTS RMS AT SEA LEVEL |
| TIMING | BREAK BEFORE MAKE |
| PLUNGER TRAVEL | .030 |
| ACTUATION FORCE | 50 TO 400 GRAMS |
| LIFE EXPECTANCY | .4VA: 100,000 |
| | 1A: 60,000 |
| OPERATING TEMPERATURE | -30°C TO +95°C |
| STORAGE TEMPERATURE | -30°C TO +95°C |
| TERMINAL SEAL | SINGLE POLE: EPOXY |
| | DOUBLE POLE: EPOXY OPTIONAL |

NOTES:

1. TERMINAL NUMBERS ARE FOR REFERNCE ONLY AND DO NOT APPEAR ON SWITCHES

2. ALL MATERIALS AND FINISHES COMPLY WITH EU DIRECTIVE 2002/95/ES OF 27JAN2003 (ROHS)

3

CENTER TERMINAL PRESENT ON DOUBLE THROW SWITCHES ONLY.

PART NUMBER MATRIX

| MODEL | POLES | RATING | FUNCTION | PLATING | TERMINATIONS | BUTTON COLOR | 04 |
|--|--------|------------------|------------------|----------------|--------------------|--------------|----|
| TP | 1 | 1=GOLD .4VA | C=SPST MOMENTARY | G=GOLD | BLANK=WIRE LUG | 0=BLACK | |
| | 2(1+1) | 3=SILVER 1 AMP 1 | F=SPDT MOMENTARY | BLANK=SILVER 1 | PC=PRINTED CIRCUIT | 2=RED | |
| | | | | | RA=RIGHT ANGLE 1 | 6=BLUE | |
| NOTES: | | | | | | | |
| 1. SILVER ONLY AVAILABLE IN WIRE LUG AND PC TERMINATIONS | | | | | | | |

| P/N | ALCO P/N | POLES | THROWS | PLATING | TERMINALS | BUTTON COLOR | FUNCTION | | CONNECTED TERMINALS | |
|-------------|--------------|--------|--------|---------|-------------|--------------|----------|-----|---------------------|-----|
| | | | | | | | | | | |
| 1825095-1 | TP11CGPC004 | 1 | 1 | GOLD | PC | BLACK | OFF | MOM | OFF | 1-3 |
| 1825095-2 | TP11CGPC204 | 1 | 1 | GOLD | PC | RED | OFF | MOM | OFF | 1-3 |
| 1825095-3 | TP11CGRA004 | 1 | 1 | GOLD | RIGHT ANGLE | BLACK | OFF | MOM | OFF | 1-3 |
| 1825095-4 | TP11CGRA204 | 1 | 1 | GOLD | RIGHT ANGLE | RED | OFF | MOM | OFF | 1-3 |
| 1825095-5 | TP11CGRA604 | 1 | 1 | GOLD | RIGHT ANGLE | BLUE | OFF | MOM | OFF | 1-3 |
| 1825095-6 | TP11FGPC004 | 1 | 2 | GOLD | PC | BLACK | ON | MOM | 1-2 | 2-3 |
| 1825095-7 | TP11FGPC204 | 1 | 2 | GOLD | PC | RED | ON | MOM | 1-2 | 2-3 |
| 1825095-8 | TP11FGRA004 | 1 | 2 | GOLD | RIGHT ANGLE | BLACK | ON | MOM | 1-2 | 2-3 |
| 1825095-9 | TP11FGRA204 | 1 | 2 | GOLD | RIGHT ANGLE | RED | ON | MOM | 1-2 | 2-3 |
| 1-1825095-0 | TP11FGRA604 | 1 | 2 | GOLD | RIGHT ANGLE | BLUE | ON | MOM | 1-2 | 2-3 |
| 1-1825095-1 | TP21CCGRA004 | 2(1+1) | 1 | GOLD | RIGHT ANGLE | BLACK | OFF | MOM | OFF | 1-3 |
| 1-1825095-2 | TP21CCGRA204 | 2(1+1) | 1 | GOLD | RIGHT ANGLE | RED | OFF | MOM | OFF | 1-3 |
| 1-1825095-3 | TP21FFGRA004 | 2(1+1) | 2 | GOLD | RIGHT ANGLE | BLACK | ON | MOM | 1-2 | 2-3 |

THIS DRAWING IS A CONTROLLED DOCUMENT.

DIMENSIONS: INCHES

TOLERANCES UNLESS OTHERWISE SPECIFIED:

0 PLC ± -
1 PLC ± -
2 PLC ± -
3 PLC ± .010
4 PLC ± -
ANGLES ± 3°
FINISH -

MATERIAL -

FINISH -

DWN RAGHU 12-1-05

CHK -

APVD -

PRODUCT SPEC -

APPLICATION SPEC -

WEIGHT -

CUSTOMER DRAWING

TE Connectivity

PUSHBUTTON SWITCH, TP SERIES

SIZE A2 CAGE CODE 00779 DRAWING NO C=1825095 RESTRICTED TO -

SCALE 4:1 SHEET 1 of 3 REV A1

1471-9 (3/11)

THIS DRAWING IS UNPUBLISHED.

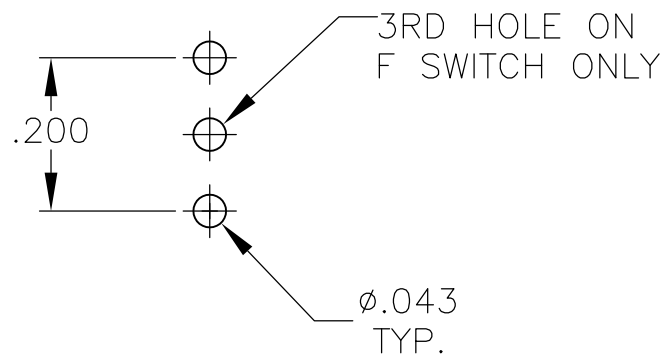
RELEASED FOR PUBLICATION

ALL RIGHTS RESERVED.

© COPYRIGHT - By -

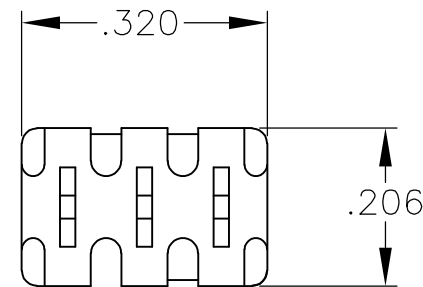
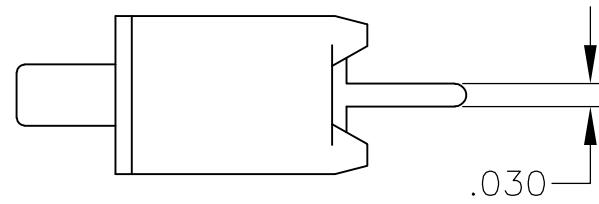
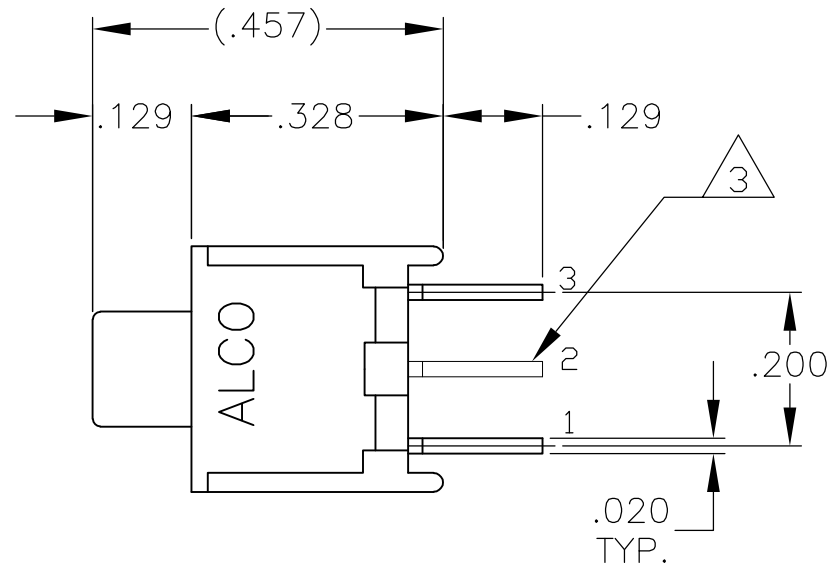
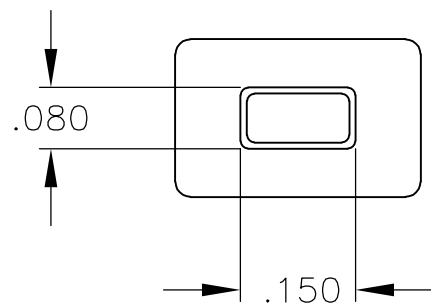
| LOC | DIST | REVISIONS | | | | |
|-----|------|-----------|-----|-------------|------|-----|
| AD | 00 | P | LTR | DESCRIPTION | DATE | DWN |
| | | | | SEE SHEET 1 | | |

D



RECOMMENDED HOLE LAYOUT
TOLERANCE $\pm .002$ UNLESS
OTHERWISE NOTED

C



TP11CGPC
TP11FGPC

D

C

1825095

B

B

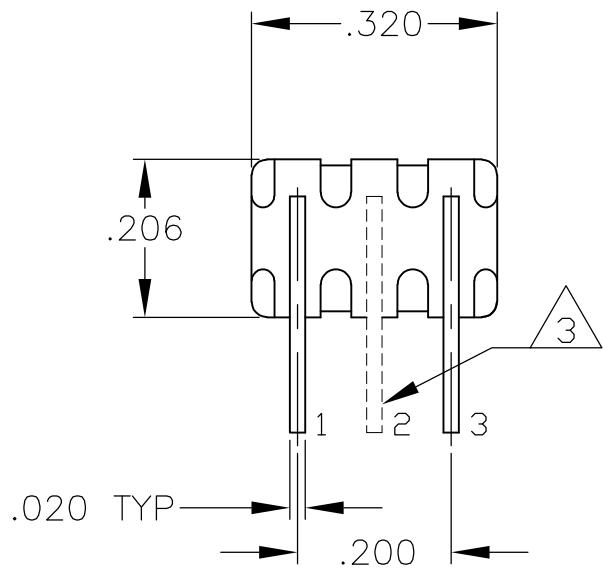
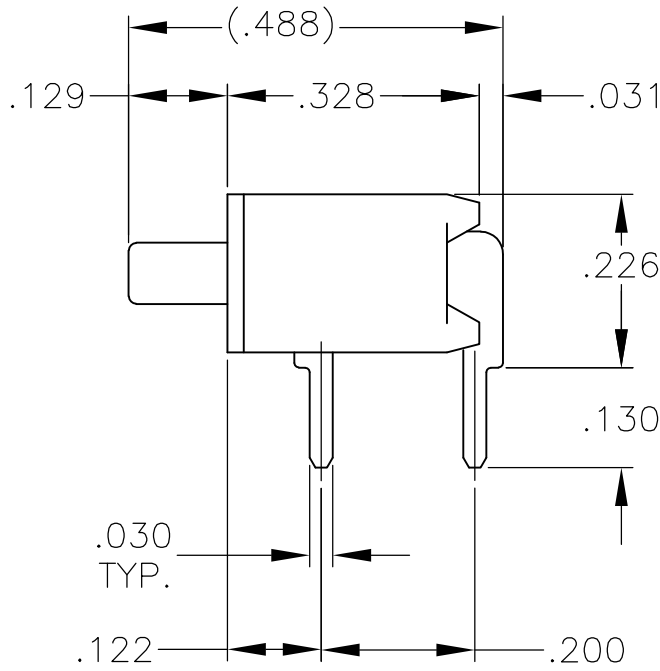
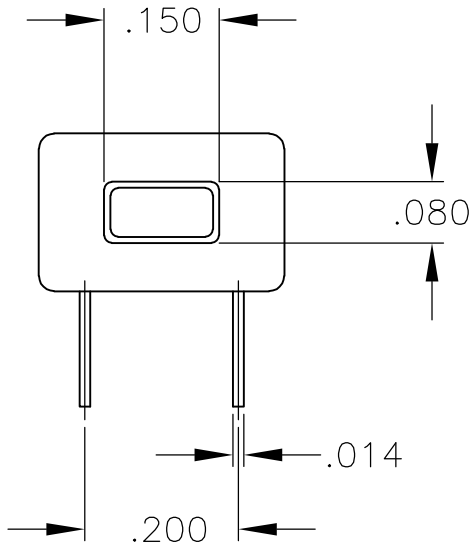
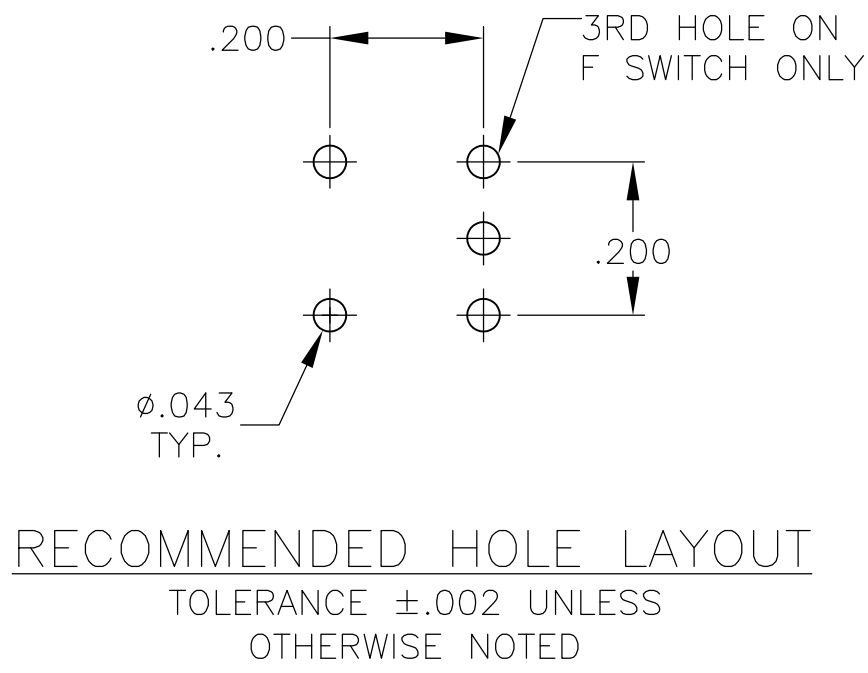
A

A

| | | | | | | | |
|--|--|------------------|---------|--------------------------------------|-----------|------------|---------------|
| THIS DRAWING IS A CONTROLLED DOCUMENT. | | DWN | 12-1-05 | TE Connectivity | | | |
| | | CHK | - | | | | |
| DIMENSIONS: INCHES | | APVD | - | NAME PUSHBUTTON SWITCH, TP SERIES | | | |
| | | PRODUCT SPEC | - | | | | |
| | | APPLICATION SPEC | - | | | | |
| | | WEIGHT | - | SIZE | CAGE CODE | DRAWING NO | RESTRICTED TO |
| | | | | A2 | 00779 | C=1825095 | - |
| MATERIAL | | FINISH | | CUSTOMER DRAWING | | | |
| | | | | SCALE | 4:1 | SHEET | 2 of 3 |
| | | | | | | REV | A1 |

| LOC | DIST | REVISIONS | | | | | |
|-----|------|-----------|-----|-------------|------|-----|------|
| AD | 00 | P | LTR | DESCRIPTION | DATE | DWN | APVD |
| | | | — | SEE SHEET 1 | — | — | — |

D



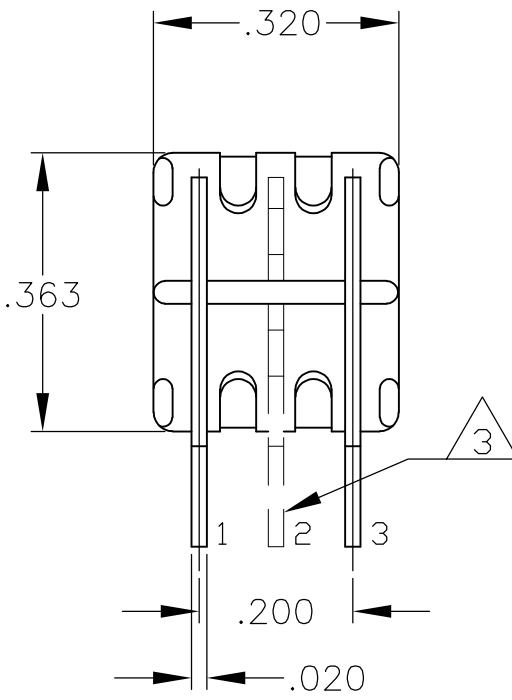
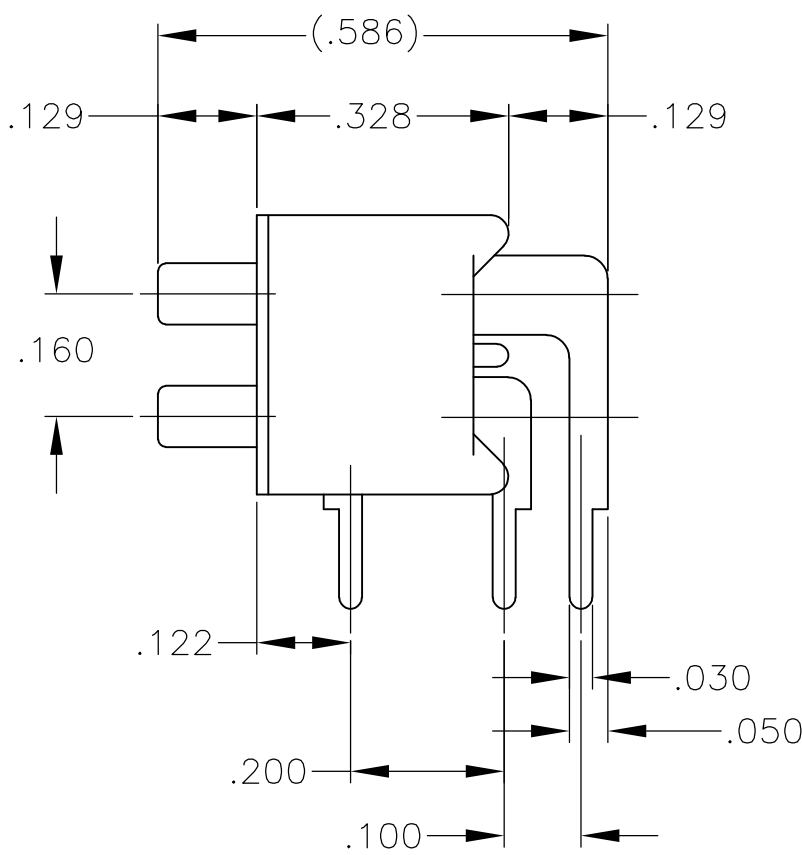
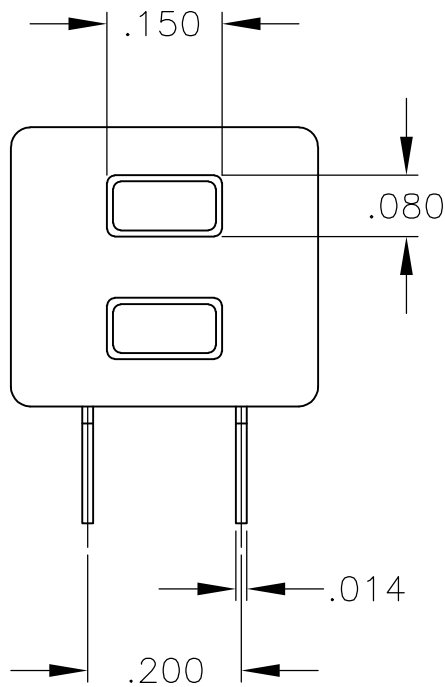
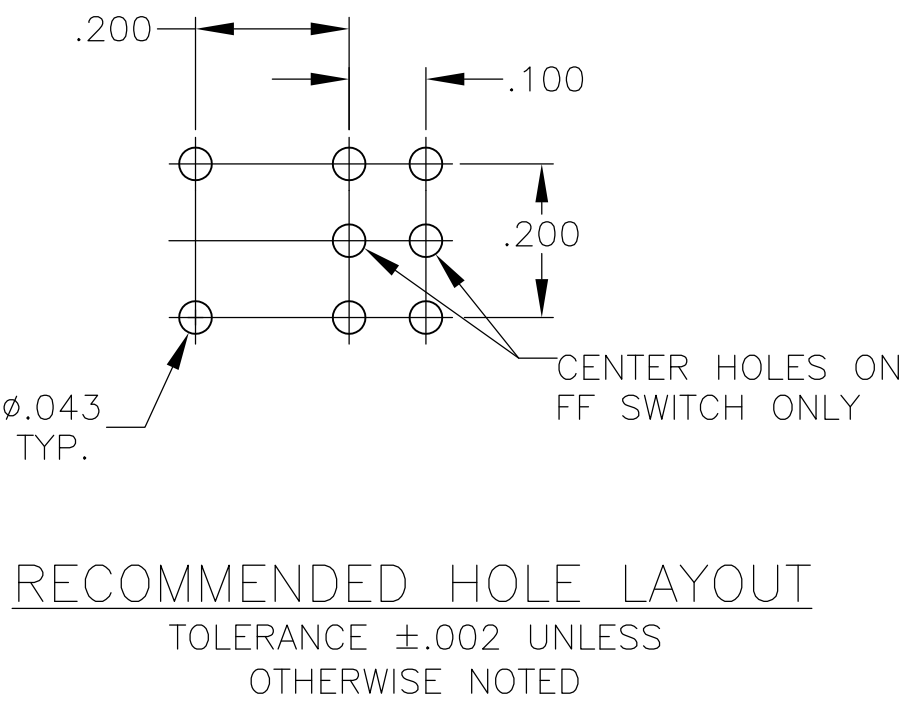
TP11CGRA
TP11FGRA

D

C

C

B



TP21CCGRA
TP21FFGRA

B

A

A

| | | | | | | | |
|--|--|------------------|---------|------------------------------|-----------|------------|---------------|
| THIS DRAWING IS A CONTROLLED DOCUMENT. | | DWN | 12-1-05 | TE Connectivity | | | |
| DIMENSIONS: INCHES | | CHK | - | | | | |
| | | APVD | - | NAME | | | |
| | | PRODUCT SPEC | - | PUSHBUTTON SWITCH, TP SERIES | | | |
| TOLERANCES UNLESS OTHERWISE SPECIFIED: | | APPLICATION SPEC | - | - | | | |
| MATERIAL | | WEIGHT | - | SIZE | CAGE CODE | DRAWING NO | RESTRICTED TO |
| - | | FINISH | - | A2 | 00779 | C=1825095 | - |
| | | CUSTOMER DRAWING | | SCALE | 1:1 | SHEET | 3 OF 3 |
| | | | | | | REV | A1 |