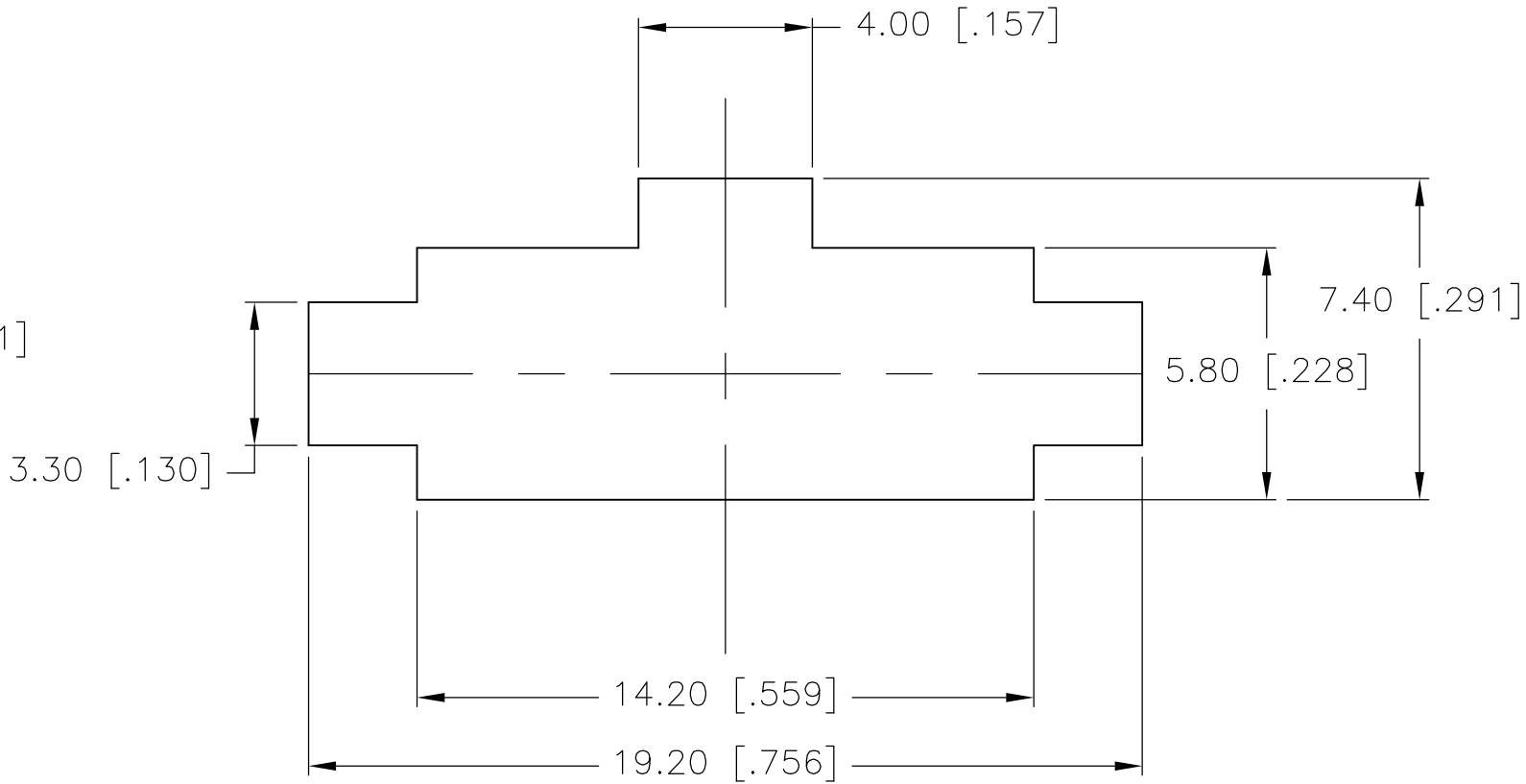
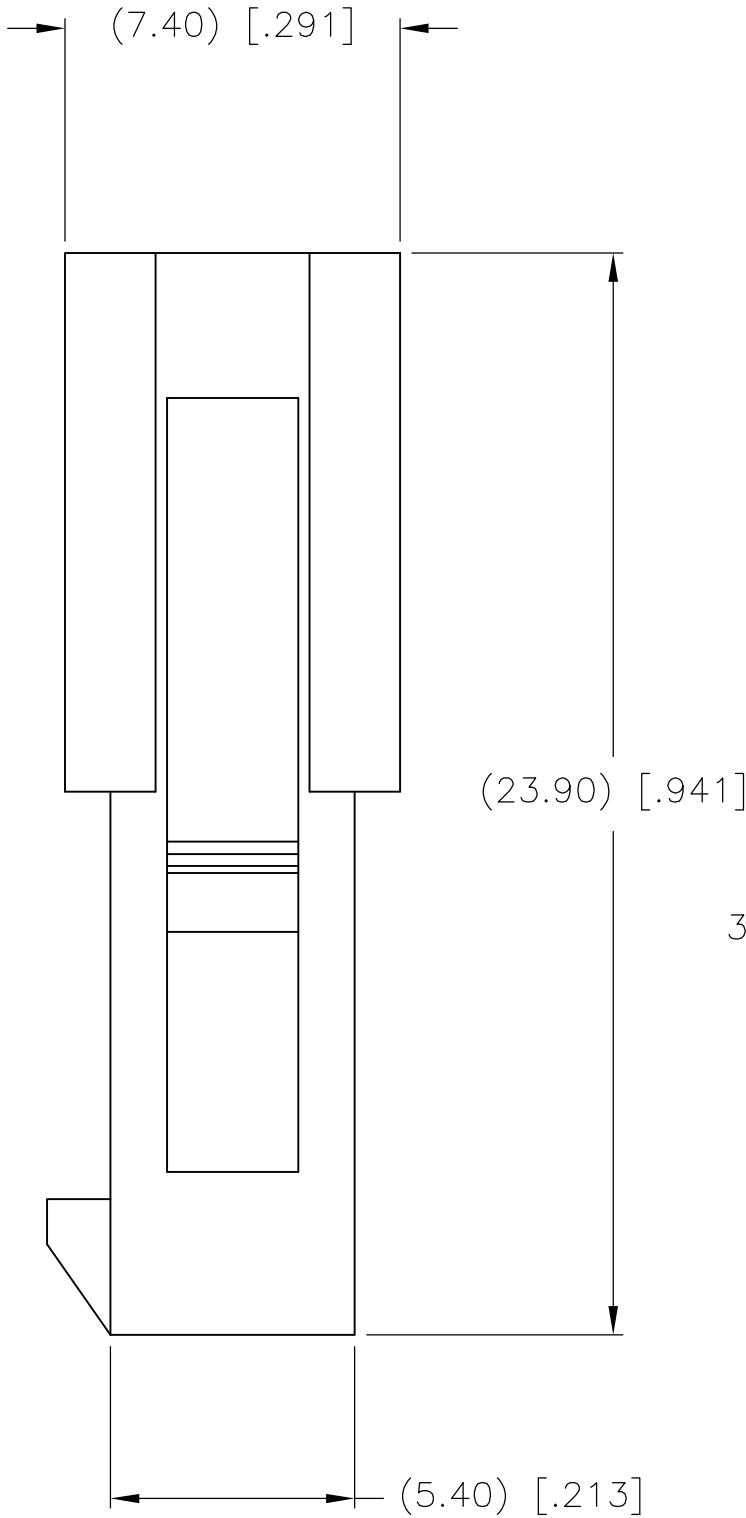
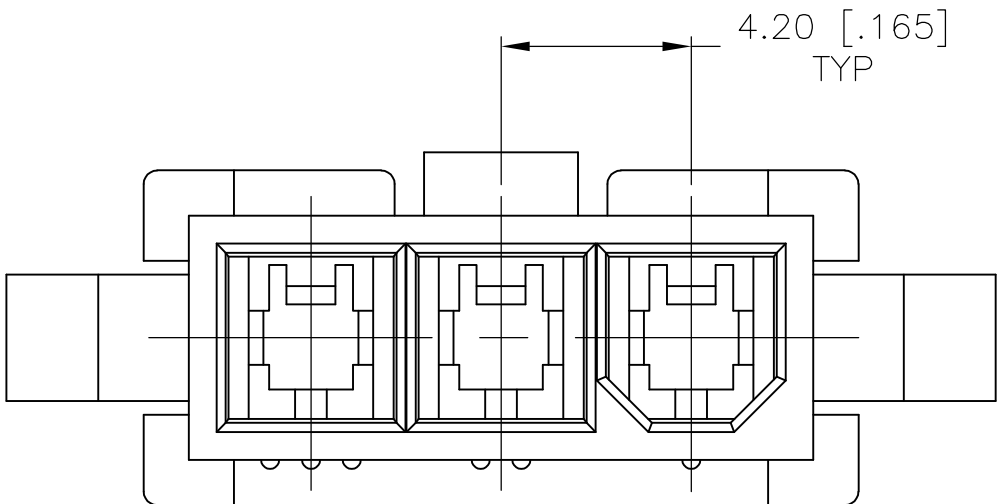
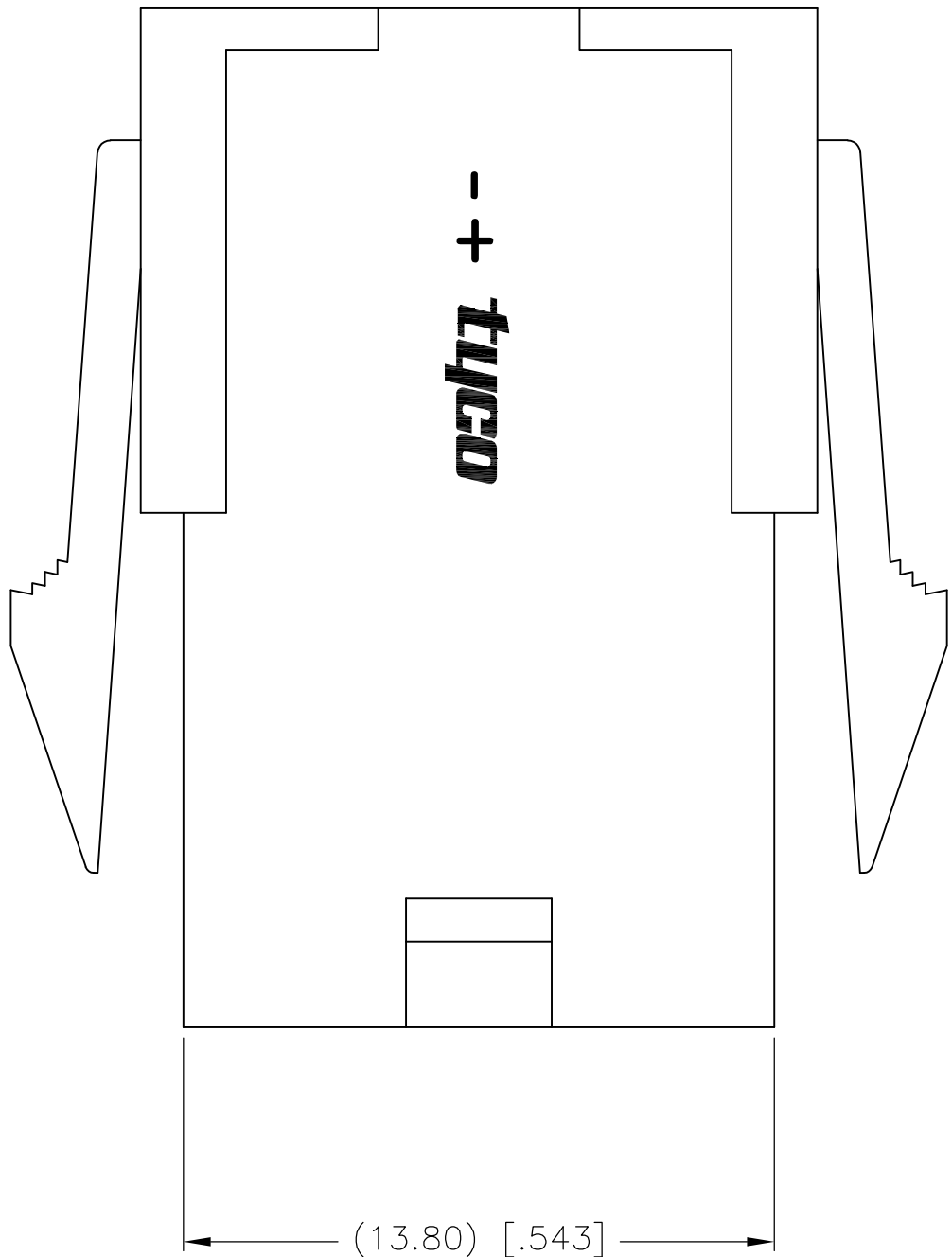
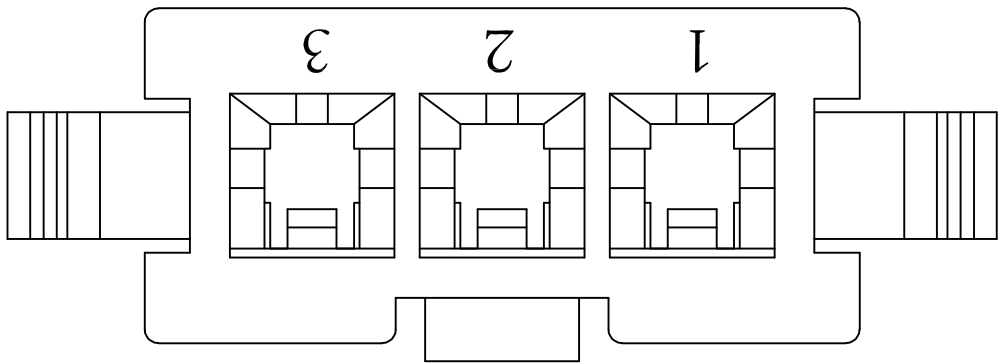


LOC	DIST	REVISIONS				
CM	00	P	LTR	DESCRIPTION	DATE	DWN
			A1	REVISED PER ECO-08-017870	22JUL08	CC



RECOMMENDED PANEL CUT-OUT
2.00 [.079] MAX THICK PANEL

- 1 MATERIAL: NYLON UL94V-2.
- 2 PANEL MUST BE PUNCHED SO THAT THE HOUSING ENTERS THE PANEL IN THE SAME DIRECTION AS THE PUNCH.

1586101-3
PART NO.

THIS DRAWING IS A CONTROLLED DOCUMENT.		DWN S. HOOVER	06-JAN-2004	Tyco Electronics Corporation Harrisburg, PA 17105-3608		
DIMENSIONS: mm [INCHES]		CHK D. COLEY	06-JAN-2004			
		APVD D. COLEY	06-JAN-2004	NAME		
		PRODUCT SPEC		3 POS, PLUG, V2, VAL-U-LOK(TM)		
TOLERANCES UNLESS OTHERWISE SPECIFIED:		APPLICATION SPEC		SIZE	CAGE CODE	DRAWING NO
0 PLC ±		WEIGHT		A2	00779	C=1586101
1 PLC ±		CUSTOMER DRAWING		SCALE		SHEET
2 PLC ± 0.13 [.005]				6:1		1 of 1
3 PLC ±						REV
4 PLC ±						A1
ANGLES ± 0°30'						
FINISH						
MATERIAL						
NYLON 66 UL94V-2						

METRIC