



Back Box Enclosures For

- Pin & Sleeve
- Watertight Safety-Shroud™
- Twist-Lock®

# HUBBELL



Hubbell manufactures an extensive line of back boxes. Each back box is designed to give the user the maximum amount of wiring capacity to achieve grounding to metallic conduit. The back boxes are available in nonmetallic and cast metal. The non-metallic back box is made of a high grade engineered thermoplastic, which resists chemicals, abuse and UV sun rays. The box has an integral

grounding plate and is Type 4X (hose directed water, corrosion resistant) when installed with a watertight conduit hub. The metal back boxes are made of cast aluminum and finished with an enamel paint. They will withstand a 500-hour salt spray as well as UL raintight and external icing tests. You can depend on both back box enclosures in hostile and abusive environments.

Features	Benefits
<p><b>Nonmetallic</b></p> <ul style="list-style-type: none"> <li>• Type 4X (hose directed water, corrosion resistant)</li> <li>• Internal ground plate</li> <li>• 15° angle for receptacle</li> </ul> <p><b>Metallic</b></p> <ul style="list-style-type: none"> <li>• Epoxy coated cast aluminum</li> <li>• Integral threaded hub</li> <li>• 15° angle for receptacle</li> </ul>	<ul style="list-style-type: none"> <li>• Provides protection in wet and abuse environments.</li> <li>• Allows nonmetallic box to be used with metallic conduit achieving grounding.</li> <li>• Help prevent strain on heavy cord exiting plug.</li> <li>• Chemical and abuse resistant.</li> <li>• Allows for quick installation and immediate grounding.</li> <li>• Help prevent strain on heavy cord exiting plug.</li> </ul>



## Ordering Information



### Back Boxes

Hubbell manufactures an extensive line of back boxes, each designed to give the user the maximum amount of wiring room while assuring grounding to metallic conduit. Hubbell back boxes are available in nonmetallic as well as metallic and accept both the Pin and Sleeve and Watertight Safety Shroud™ Twist-Lock® product lines. You can depend on Hubbell back box enclosures to perform reliably— even in hostile environments.



BB2030N

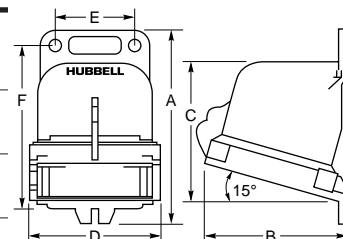


### Nonmetallic Back Box

This Hubbell back box is made of a high grade engineered thermoplastic that meets IP67 requirements. It resists chemicals, abuse and UV rays. What's more, this box has an integral grounding plate and, when installed with a watertight conduit hub, it meets Type 4X requirements (hose-directed water, corrosion resistance).

Description	Hub Size Inch (mm)	A Inch (mm)	B Inch (mm)	C Inch (mm)	D Inch (mm)	E Inch (mm)	F Inch (mm)	Cubic Inch Capacity	Catalog Number
Back box for 20 & 30A devices.	1*	5.67 (144.0)	4.44 (112.8)	4.05 (102.9)	3.91 (99.3)	2.35 (59.7)	4.92 (125.0)	30	<b>BB2030N</b>
Back box for 60A devices.	1 1/4**	7.76 (197.0)	5.16 (131.0)	5.87 (149.0)	4.72 (120.0)	2.99 (76.0)	6.94 (176.0)	70	<b>BB60N</b>
Back box for 100A devices.	1 1/2***	8.21 (209.0)	6.23 (158.0)	6.31 (160.3)	5.71 (145.0)	3.99 (101.0)	7.41 (188.0)	120	<b>BB100N</b>

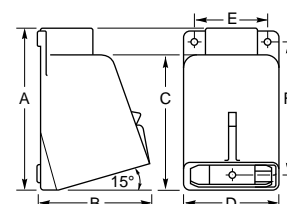
\* Hub is not included; order one of the following Racco part numbers: \* 1" = 1704, \*\* 1 1/4 = 1705, \*\*\* 1 1/2 = 1706



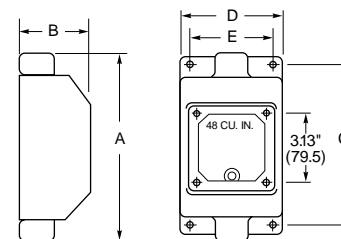
### Metallic Back Box

These boxes are made of cast aluminum, suitable for IP54 requirements, and are finished with enamel paint. These boxes withstand a 500-hour salt spray test as well as UL raintight and external icing tests.

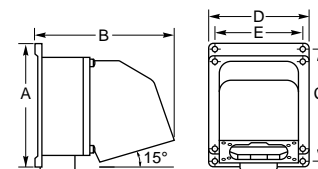
Description	Hub Size Inch (mm)	A Inch (mm)	B Inch (mm)	C Inch (mm)	D Inch (mm)	E Inch (mm)	F Inch (mm)	Cubic Inch Capacity	Catalog Number
Back box for 20 & 30A devices.	.75 (19.1)	5.12 (130.2)	4.00 (101.6)	4.19 (106.4)	3.75 (95.3)	3.00 (76.2)	4.00 (101.6)	30	<b>BB201W</b>
Back box for 20 & 30A devices.	1.00 (25.4)	5.12 (130.2)	4.00 (101.6)	4.19 (106.4)	3.75 (95.3)	3.00 (76.2)	4.00 (101.6)	30	<b>BB301W</b>
Back box for 60A devices.	1.25 (31.8)	7.25 (184.2)	5.25 (133.4)	6.00 (152.4)	4.50 (114.3)	3.75 (95.3)	6.19 (157.2)	80	<b>BB601W</b>
Back box for 60A devices.	1.50 (38.1)	7.25 (184.2)	5.25 (133.4)	6.00 (152.4)	4.50 (114.3)	3.75 (95.3)	6.19 (157.2)	80	<b>BB602W</b>
Back box for 100A devices.	1.50 (38.1)	8.12 (206.4)	6.75 (171.5)	6.88 (174.6)	5.50 (139.7)	4.75 (120.7)	6.94 (176.2)	130	<b>BB1001W</b>
Back box for 100A devices.	2.00 (50.8)	8.12 (206.4)	6.75 (171.5)	6.88 (174.6)	5.50 (139.7)	4.75 (120.7)	6.94 (176.2)	130	<b>BB1002W</b>
Feed thru for 20 and 30A devices.	.75 (19.1)	8.25 (209.6)	3.06 (77.8)	7.14 (181.4)	4.50 (114.3)	3.75 (95.3)	—	48	<b>FT202W</b>
Feed thru for 20 and 30A devices.	1.00 (25.4)	8.25 (209.6)	3.06 (77.8)	7.14 (181.4)	4.50 (114.3)	3.75 (95.3)	—	78	<b>FT302W</b>
Four way for 60 and 100A devices.	1.50 (38.1)	8.75 (222.3)	9.75 (247.7)	7.75 (196.9)	6.75 (171.5)	6.00 (152.4)	—	210	<b>FW60100</b>



Angle Box



Feed-Thru Box



Four-Way Box



### Wiring Device - Kellems

Hubbell Incorporated (Delaware) • 185 Plains Road • Milford, CT 06460-2420 • (203) 882-4800 • FAX (800) 255-1031  
World Wide Web URL: <http://www.hubbell-wiring.com>