

| LOC | DIST | REVISIONS | | | | | |
|-----|------|-----------|-----|---------------|-----------|------|------|
| | | P | LTR | DESCRIPTION | DATE | DWN | APVD |
| E | B | | C1 | ECO-09-027745 | 21DEC2009 | RITA | BOB |

NOTES:

- 1

PACK IN ACCORDANCE WITH AMP SPEC 107-3275
- 2

100 TRAY PACK IN ACCORDANCE WITH AMP SPEC 107-3275
- 3

Au PLATING
- 4

ELECTRICAL CHARACTERISTICS

FREQUENCY RANGE:DC - 4 GHz

NOMINAL IMPEDANCE:50 Ohm

INSULATION RESISTANCE:1000 MOhm

WORKING VOLTAGE:250 Volts RMS at Sea Level

DIELECTRIC WITHSTAND VOLTAGE:750 Volts RMS Max

CONTACT RESISTANCE:6.00 mOhm Max

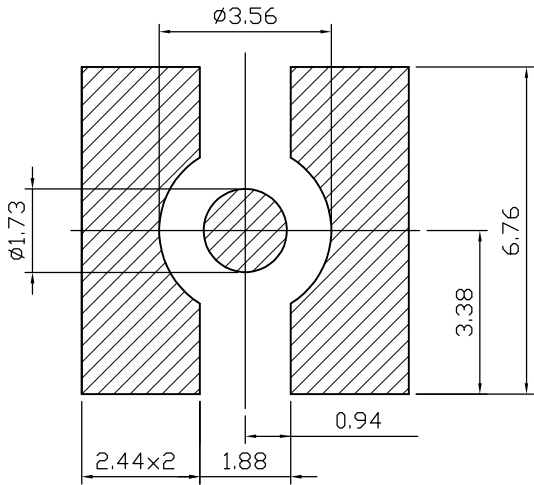
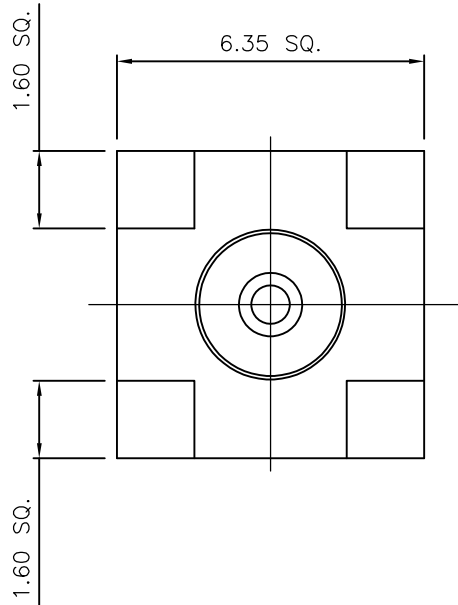
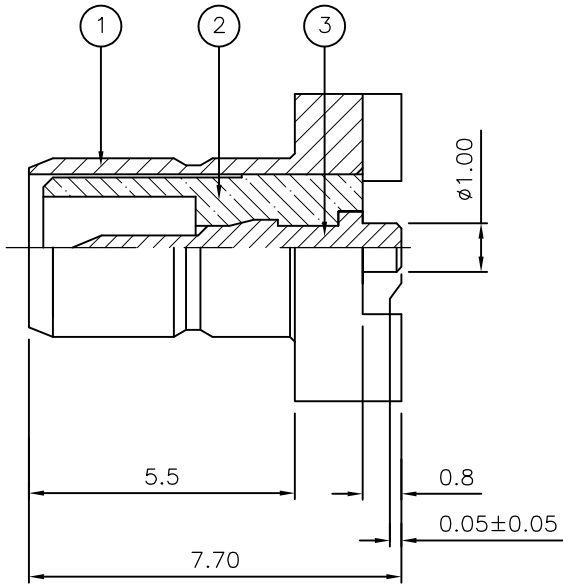
CENTRE CONTACT:1.00 mOhm Max
- 5

MECHANICAL CHARACTERISTICS





DURABILITY:500 Cycles Min
- 6


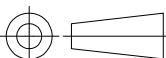
ENVIRONMENTAL CHARACTERISTICS

OPERATING TEMPERATURE:-65 to +165 DegC



RECOMMENDED PCB LAYOUT

| | | | | | | | |
|-------------------|--|---|---|------------|---|-------------|------|
| | | 1 | 1 | BRASS |  | CONTACT | 3 |
| | | 1 | 1 | PTFE | | INSULATION | 2 |
| | | 1 | 1 | BRASS |  | BODY | 1 |
| | | 6--0 | 1--0 | MATERIAL | | DESCRIPTION | ITEM |
| | |  |  | | | | |
| QUANTITY PER ASSY | | | | PARTS LIST | | | |

| | | | | | | | |
|---|---|-----------------------------------|---|--------------------|-------------------------|------------------------|-----------------|
| THIS DRAWING IS A CONTROLLED DOCUMENT. | | DWN J.SANDWELL 13FEB06 |  Tyco Electronics Corporation Bideford EX39 4HE | | | | |
| | | CHK S.PARLOW 13FEB06 | | | | | |
| DIMENSIONS: mm | TOLERANCES UNLESS OTHERWISE SPECIFIED: | APVD F.WHEELER-KING 13FEB06 | NAME SMB SURFACE MOUNT STRAIGHT PCB SOCKET 50 OHM — | | | | |
|  | 0 PLC ± — 1 PLC ± 0.2 2 PLC ± 0.1 3 PLC ± — 4 PLC ± — ANGLES ± — | PRODUCT SPEC — | | | | | |
| | | APPLICATION SPEC — | SIZE A3 | CAGE CODE 00779 | DRAWING NO C-1337604 | RESTRICTED TO — | |
| | MATERIAL SEE TABLE | FINISH — | | | | | WEIGHT — |
| | | CUSTOMER DRAWING | | | SCALE NTS | SHEET 1 OF 1 | REV C1 |