

## 1.8mm Round Subminiature "Gull Wing" Lead LEDs

 PART NO. : 91-21SURC/S530-A2/TR7

### Features :

- Package in 12mm tape on 7" diameter reels.
- Compatible with automatic placement equipment.
- Compatible with infrared and vapor phase reflow solder process.
- IC compatible.
- EIA std package.
- Mono-color type.

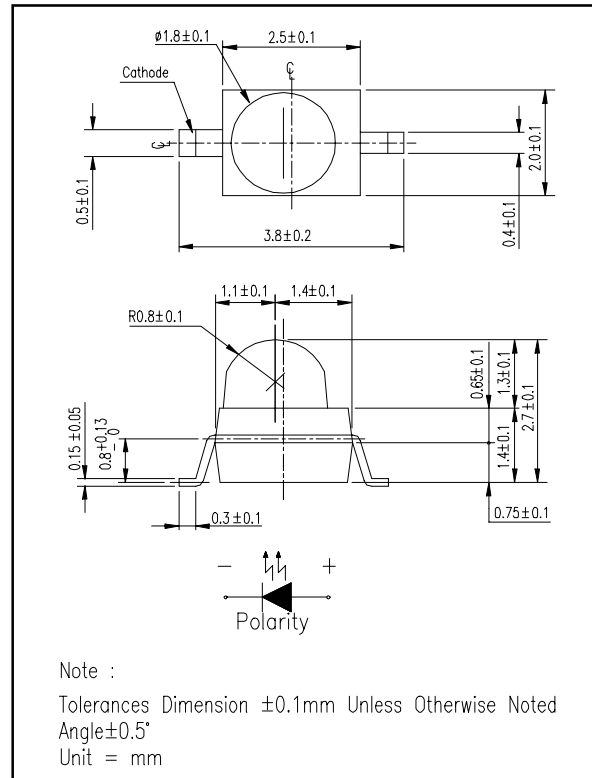
### Descriptions :

- Besides, light weight makes them ideal for miniature applications, ect.
- Furthermore by automation assembly machines the accuracy is anticipated.

### Applications :

- Small indicator for outdoor applications.
- Flat backlight for LCD, switches and symbols.
- Indicator and backlight in offic equipment.
- Indicator and backlight for battery driven equipment.
- Indicator and backlight for audio and video equipment.
- Automotive : backlighting in dashboards and switches.
- Telecommunication : indicator and backlighting in telephone and fax.
- General use.

### Package Dimensions :



PART NO.	Chip		Lens Color
	Material	Emitted Color	
91-21SURC/S530-A2/TR7	AlGaInP	Hyper Red	Red Diffused

OFFICE : NO. 25, Lane 76, Sec. 3, Chung Yang Rd., Tucheng 236, Taipei, Taiwan, R.O.C.

TEL : 886-2-2267-2000, 2267-9936

FAX : 886-2-2267-6244, 2267-6189, 2267-6306

<http://www.everlight.com>

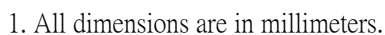
REV : 1.0

PAGE : 2/5

## 1.8mm Round Subminiature "Gull Wing" Lead LEDs

PART NO.: 91-21SURC/S530-A2/TR7

## ■ Package Dimensions



2. Lead spacing is measured where the lead emerge from the package

3. Protruded resin under flange 1.5 mm (0.59") max.

EVERLIGHT ELECTRONICS CO.,LTD.





# EVERLIGHT ELECTRONICS CO.,LTD.

DEVICE NUMBER : DLE-912-183

REV : 1.0

ECN : \_\_\_\_\_

PAGE : 5/5

## 1.8mm Round Subminiature "Gull Wing" Lead LEDs

PART NO. : 91-21SURC/S530-A2/TR7

### Typical Electro-Optical Characteristic Curves

