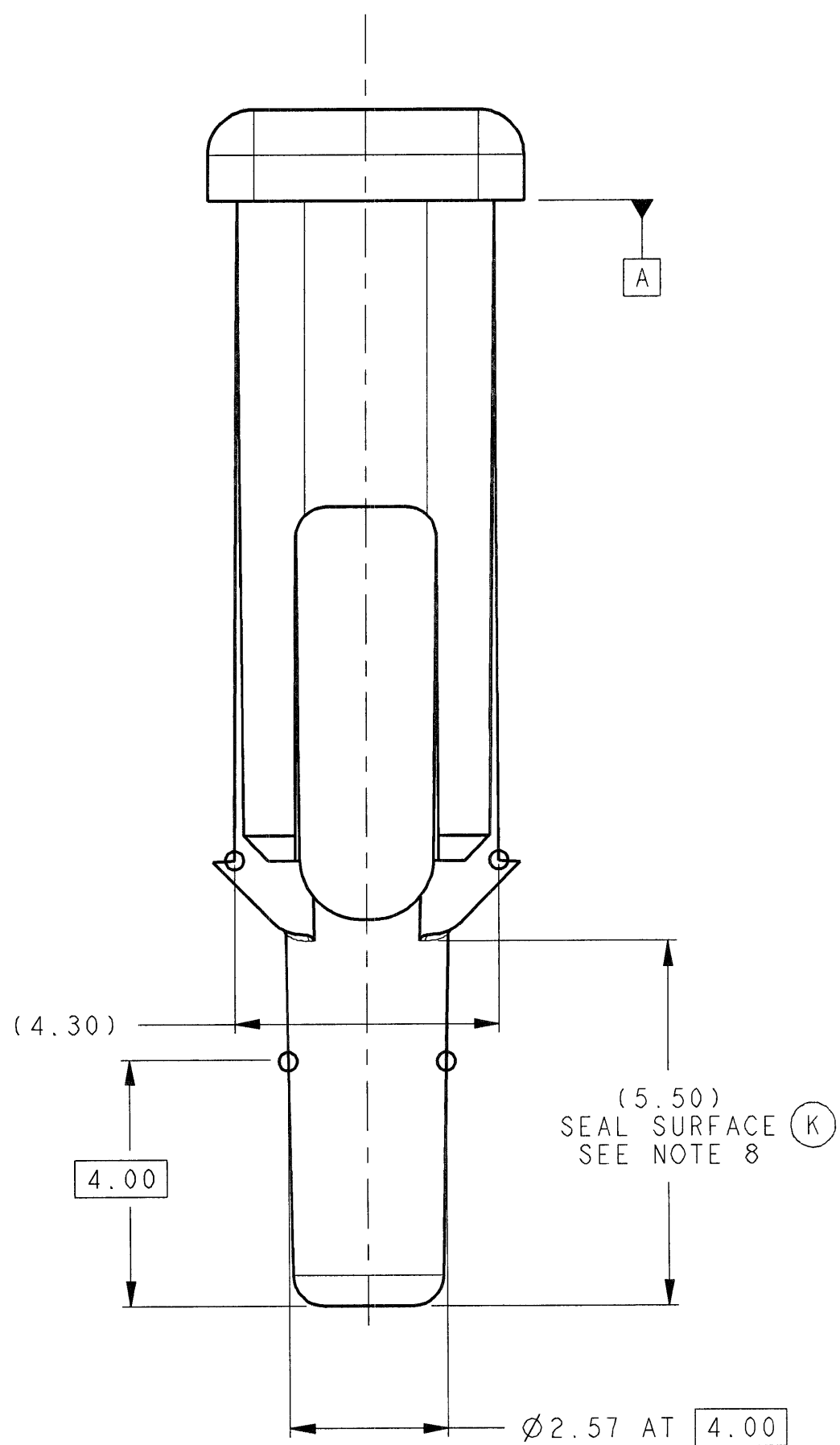
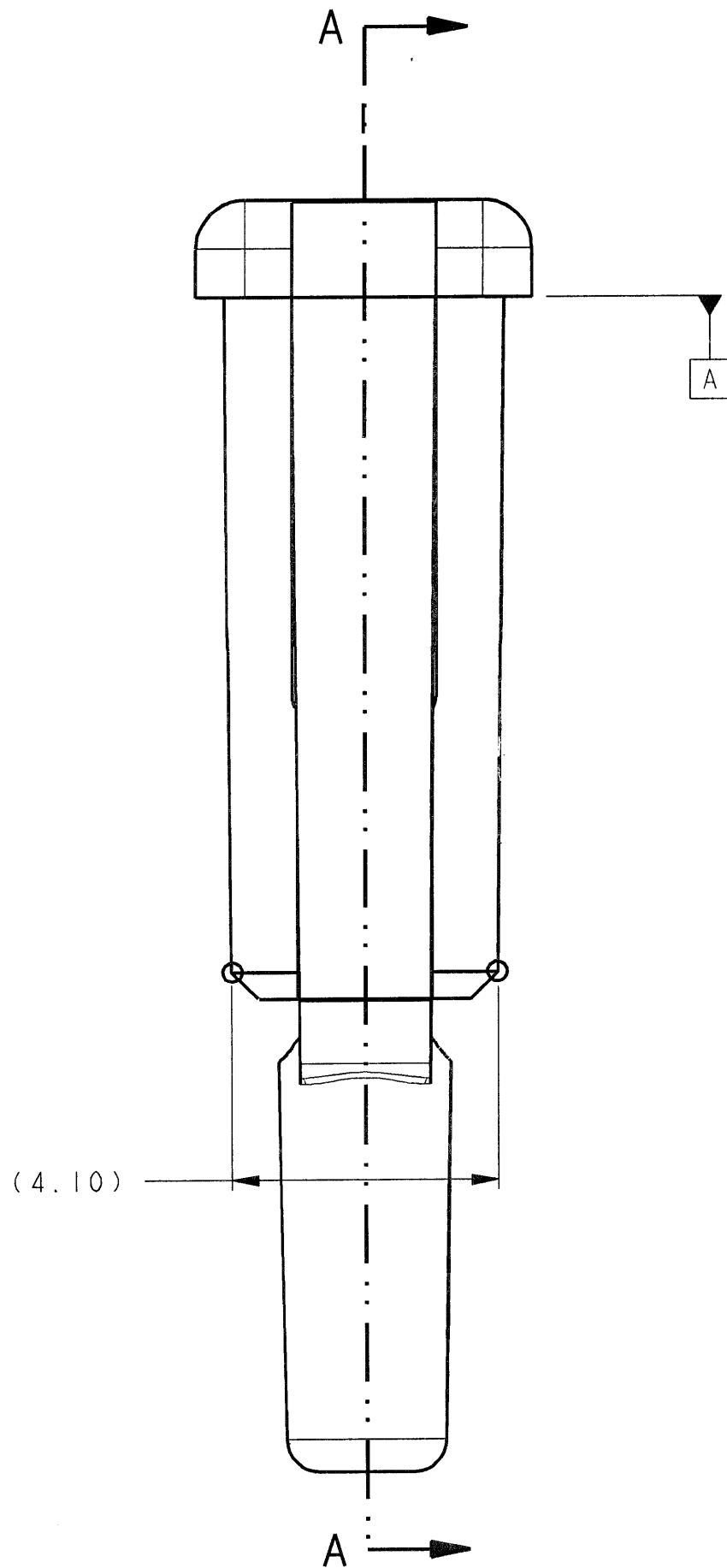
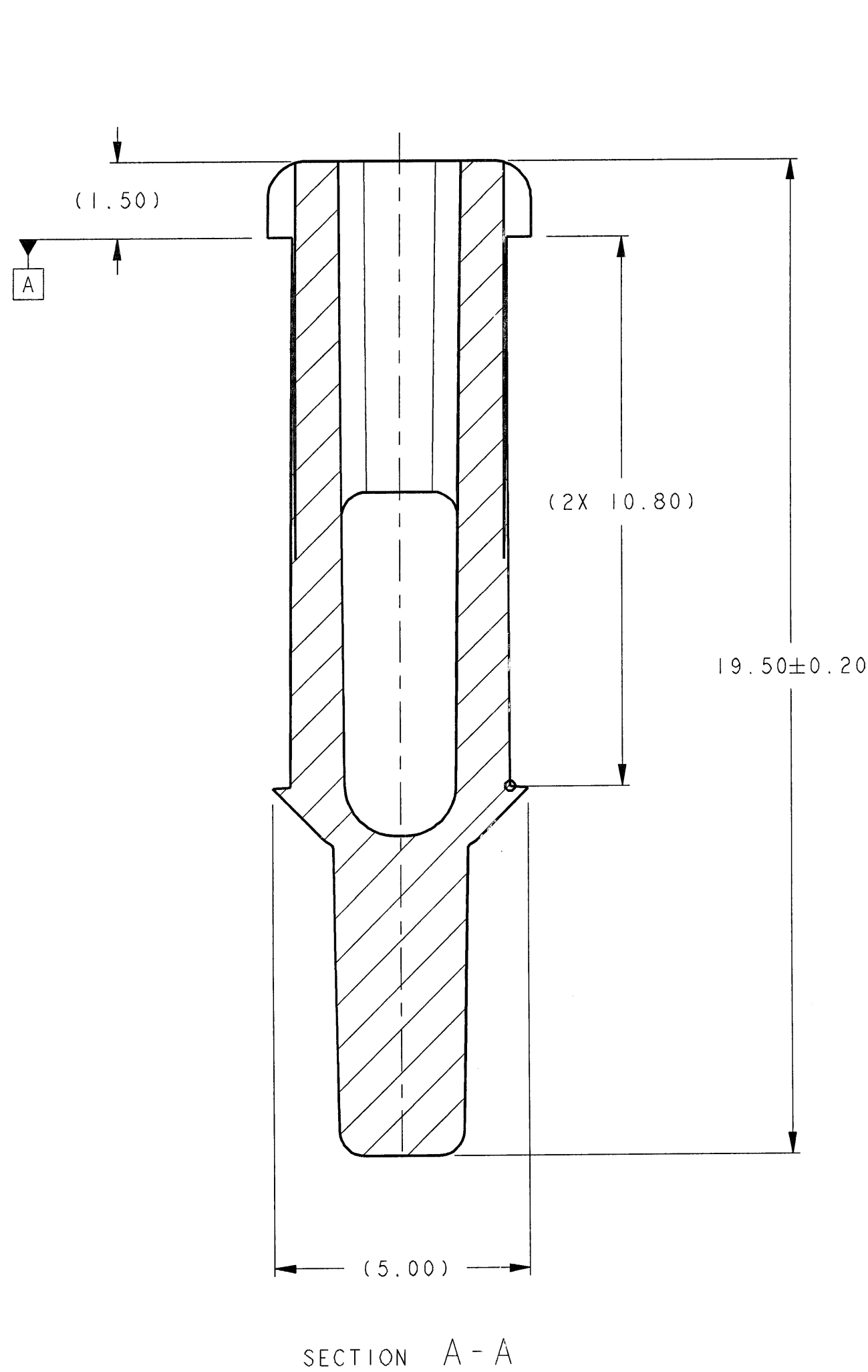
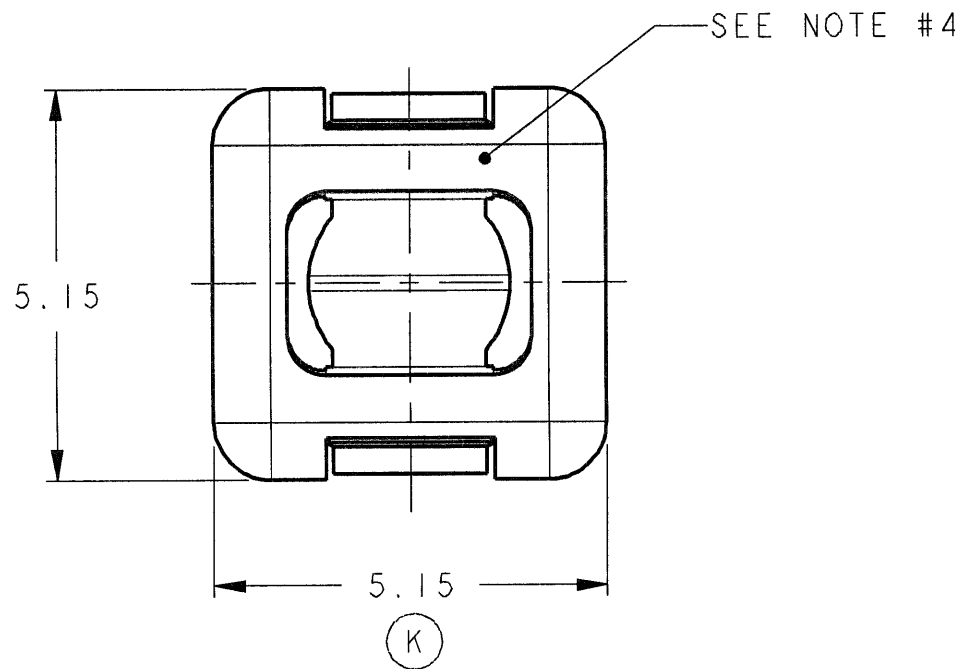




SCALE 1:1



- NOTES:
- UNLESS OTHERWISE SPECIFIED:  
TOLERANCE ON:  
1 PLACE DIMENSIONS:  $\pm 0.25$   
2 PLACE DIMENSIONS:  $\pm 0.10$   
ANGULAR DIMENSIONS:  $\pm 3^\circ$
  - PART TO BE MOLDED FREE FROM FLASH, VOIDS, STRESSES, IMPERFECTIONS, AND TOOL MARKS, THAT AFFECT FUNCTION, OR HANDLING OF THE PART.
  - ALL EJECTOR MARKS TO BE RAISED +0.25MM OR RECESSED -0.25MM BELOW THE SURFACE OF THE PART.
  - SOURCE ID, MOLD ID, CAVITY ID AND RECYCLE CODE TO BE SHOWN LEGIBLY WITH RAISED OR DEPRESSED CHARACTERS TO BE (1.0 HIGH X 0.30 WIDE) MINIMUM.
  - MOLD VENDOR TO SUBMIT FOR ENGINEERING APPROVAL, LOCATION AND TYPES OF PULLER RINGS, GATING, PARTING LINES AND EJECTION MARKS PRIOR TO CONSTRUCTION OF TOOLING.
  - MATERIAL: PER MS-DB41 NYLON 66 35% GF H.S. & LUBRICATED BASE ULTRAMID A3EG7 OR EQUIVALENT, 100% REGRIND ALLOWED.  
COLOR: DARK GRAY  
RECYCLE CODE: >PA66-GF35<
  - PART VOLUME: 151.163 MM<sup>3</sup>
  - NO PARTING LINE OR TOOLING MARKS PERMISSIBLE ON SEALING SURFACE.
  - INDICATES QUALITY ASSURANCE REQUIREMENTS. SPC DATA REQUIRED: MOLD PROCESS PARAMETERS: CAVITY PRESSURE ONLY
  - INDICATES IN PROCESS INSPECTION FOR MANUFACTURING. DIMENSIONS OR SPECIFICATION IS REQUIRED.
  - MUST CONFORM TO USCAR 2, REV 4

UNCONTROLLED

FCI AUTOMOTIVE

10/17/2007

AMERICAS

FCI MASTER COPY WHEN IN RED

9784	10-1-07	B	J11,E6	ADDED K BALLOON TO DIM 5.15 AND (6.00)	AGB	AGB	AGB
			D6	DIM Ø2.57 WAS (2.45)			
			E4	ADDED CAVITY PRESSURE TO SPC NOTE 9			
			G13	REMOVED SPC DIAMOND FROM DIM 19.50			
			-	REMOVED INSPECTION BALLOONS			
			G5	ADDED NOTES 10, 11, REMOVED 2, 3			
			-	REVISED DRAWING VIEWS ORIENTATION			
			G5	REVISED NOTE 5 ADDED RECYCLE CODE TO NOTE			
9325	2-23-07	A	-	RELEASED	AGB	AGB	AGB
ECN NUMBER	DATE	W-D-Y-Y	REVISION	ZONE	CHANGE DESCRIPTION	DRAWN BY	APPV. BY
PRODUCT SPEC.	PACKAGING SPEC.		APPLICATION SPEC.		THIS DRAWING AND ALL OTHER INFORMATION CONTAINED THEREIN IS PROPRIETARY AND THE PROPERTY OF FCI. This drawing may not be copied, reproduced or disclosed to any third party without the expressed written permission of FCI. © FCI April 1999		
TOLERANCES		X .14 ±0.1		X		X	
CONTINUITY NO.		X		X		X	
DO NOT SCALE DRAWING		X		X		X	
DATE		NAME		TITLE		DRAWING NUMBER	
10/18/06		T LEE		SEAL PLUG, APEX 150		K53022-CUST	
022307		A BUTCHER		2.8 MM, MALE		1	
022307		A BUTCHER		AM060231A		X	
FILE NAME		K53022-CUST.DWG		SCALE 10:1		1	

54240003	FCI PART NO.	DATE	10/18/06	NAME	T LEE	TITLE	SEAL PLUG, APEX 150	2.8 MM, MALE	K53022-CUST	1	1
022307	022307	022307	022307	022307	022307	022307	022307	022307	022307	022307	022307
022307	022307	022307	022307	022307	022307	022307	022307	022307	022307	022307	022307

Loc. F2D8