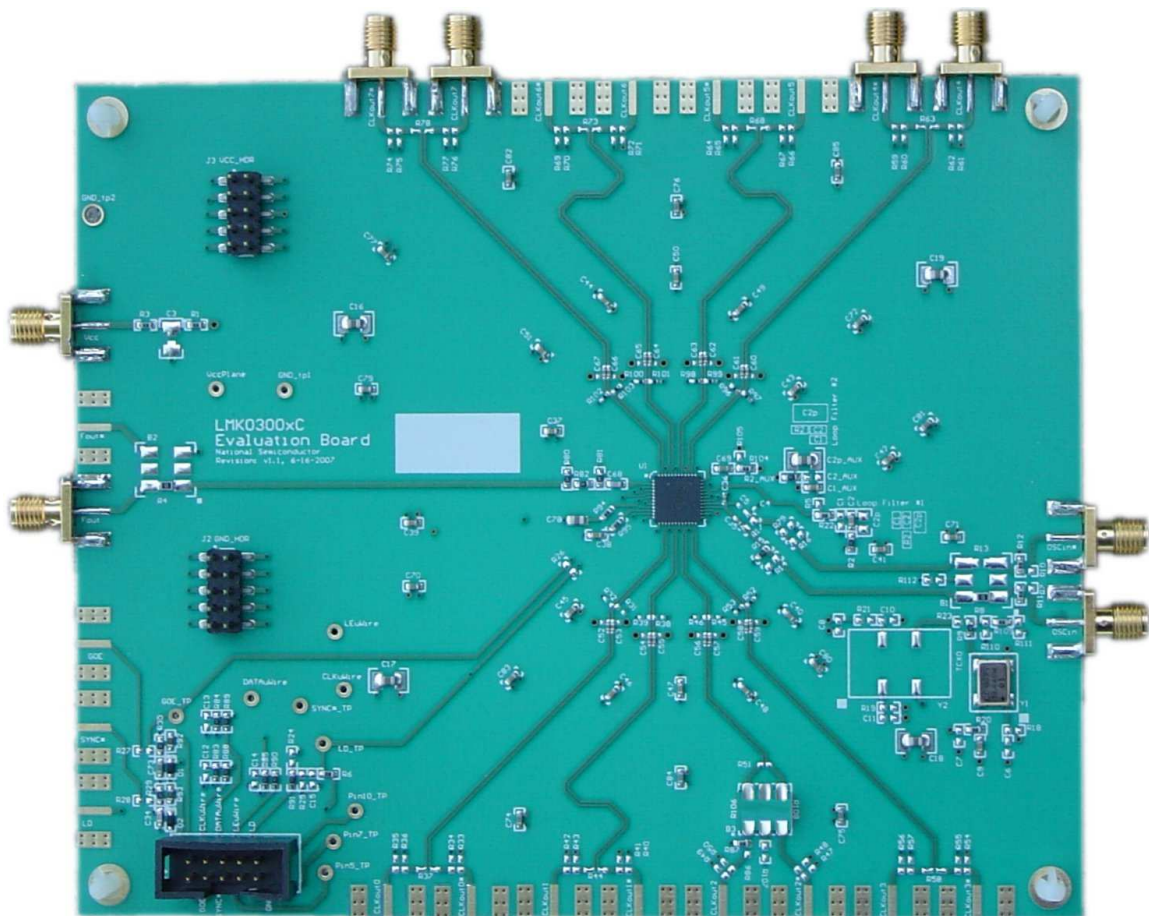




LMK03002C

Precision Clock Conditioner with Integrated VCO Evaluation Board Operating Instructions

7-23-2007



**National Semiconductor Corporation
Interface**

2900 Semiconductor Dr.
MS A2-600
Santa Clara, CA, 95052-8090



TABLE OF CONTENTS

GENERAL DESCRIPTION	3
LOOP FILTER #1	3
READ FIRST, BASIC OPERATION	4
BOARD INFORMATION.....	8
OSCin	8
Fout	8
Loop Filter	8
Features of the board.....	9
Other Important Notes	9
RECOMMENDED EQUIPMENT.....	10
PHASE NOISE	11
DELAYS.....	12
CODELOADER SETTINGS.....	13
APPENDIX A: VCO PERFORMANCE.....	17
Loop Filter #2	17
APPENDIX B: IMPACT OF REFERENCE ON PHASE NOISE	19
APPENDIX C: SCHEMATICS	20
APPENDIX D: BILL OF MATERIALS.....	23
APPENDIX E: BUILD DIAGRAM	25

General Description

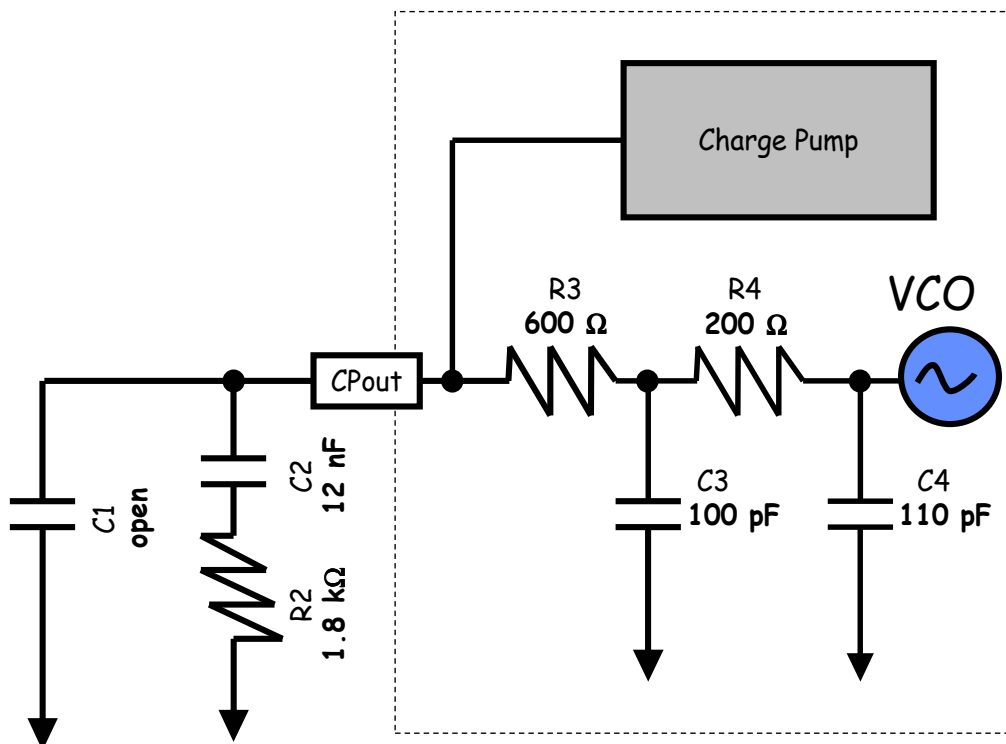
The LMK03002C Evaluation Board simplifies evaluation of the LMK03002C Precision Clock Conditioner with Integrated VCO. The package consists of an evaluation board and CodeLoader software. The *CodeLoader* software will run on a Windows 2000 or Windows XP PC. The purpose of the *CodeLoader* software is to program the internal registers of the LMK03002C device through a MICROWIRE™ interface.

The LMK0300xC PCB works for many LMK0300xC devices. Because of this the silkscreen on the board is different from actual clock outputs in the datasheet and in CodeLoader. Refer to the table below for the correct mapping.

Datasheet / CodeLoader	LMK0300xC EVB PCB
CLKout0 / CLKout0*	CLKout4 / CLKout4*
CLKout1 / CLKout1*	CLKout5 / CLKout5*
CLKout2 / CLKout2*	CLKout6 / CLKout6*
CLKout3 / CLKout3*	CLKout7 / CLKout7*

Loop Filter #1

Phase Margin	63°	K ϕ	3200 uA
Loop Bandwidth	105 kHz	F _{comp}	16 MHz
Crystal Frequency	16 MHz	Output Frequency	1566 to 1724 MHz
Supply Voltage	3.3 Volts	VCO Gain	13 MHz/Volt



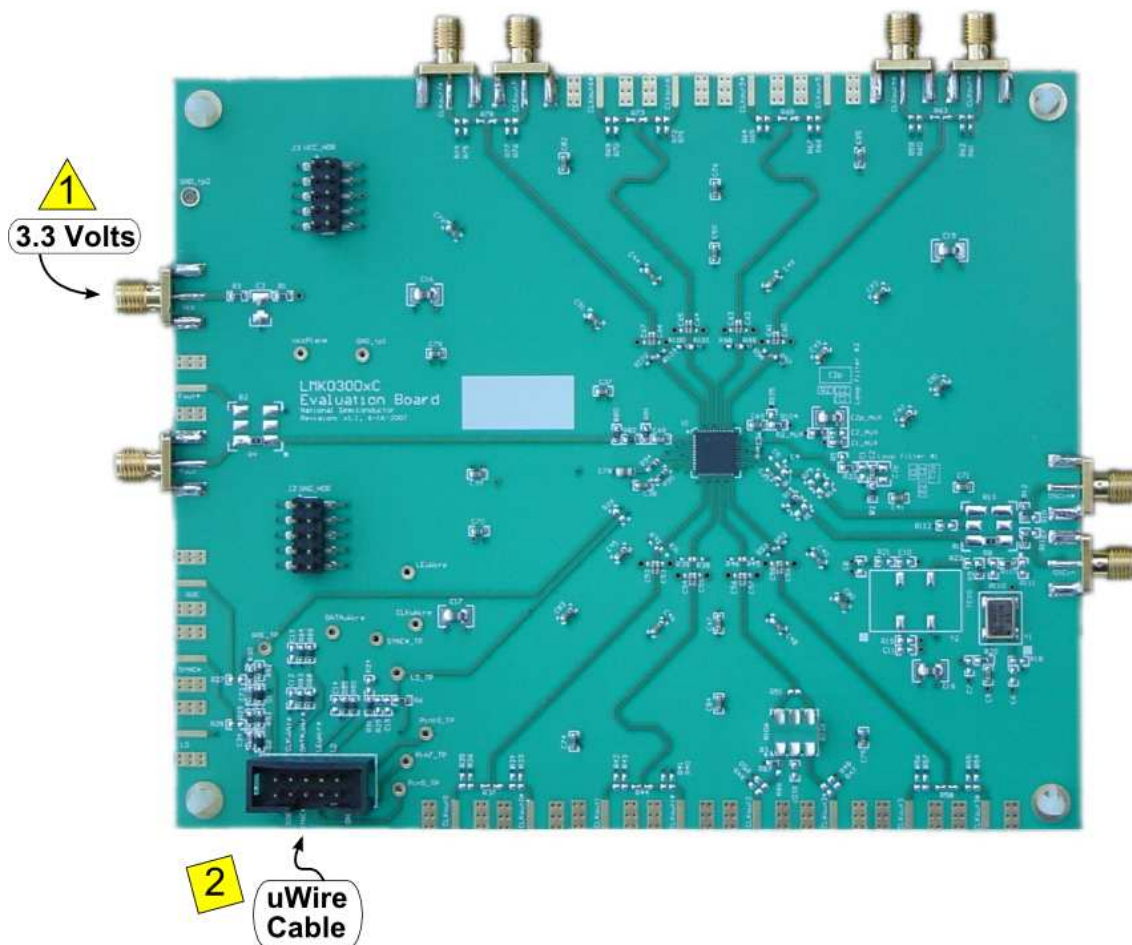
(Loop filter #1 is selected by placing a 0 ohm resistor on pad R22)

Read first, Basic Operation

Read the document, “Installing CodeLoader 4 & USB Driver” for instructions to prepare the computer for usage with the evaluation board before continuing with the hardware setup.

For basic operation...

1. Connect a low noise **3.3 V** power supply to the **Vcc** connector located at the top left of the board
2. Connect the CodeLoader cable to the **uWire** header located in the lower left.



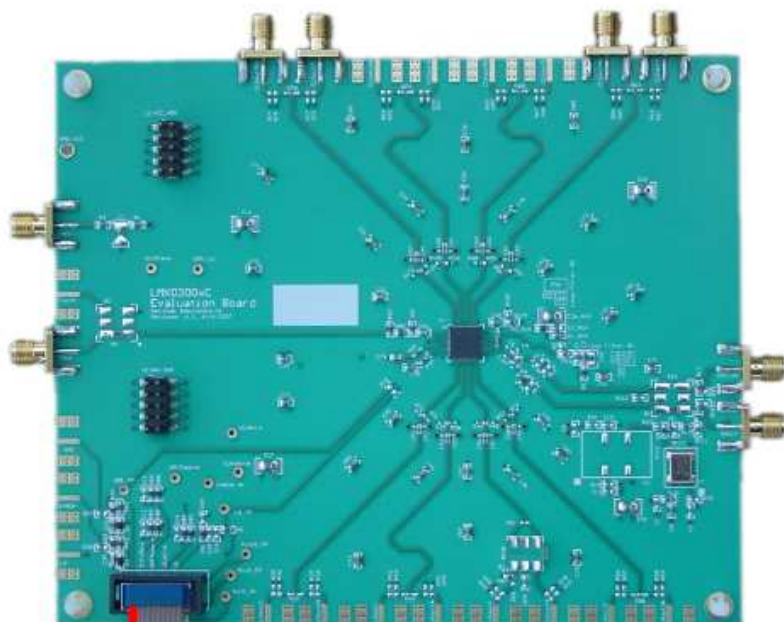
Read first, Basic Operation (Continued)

3. Connect...

- PC directly to the evaluation board with the LPT to uWire cable, plugging the cable into an LPT port on the computer and then the 10 pin ribbon connector to the evaluation board. This setup is shown below. **The cable can be removed after programming to minimize noise and EMI.**

or

- Available separately, the USB <--> uWire board to the PC with the USB cable and the USB <--> uWire board to the evaluation board with the 10 pin ribbon cable.



LPT Setup

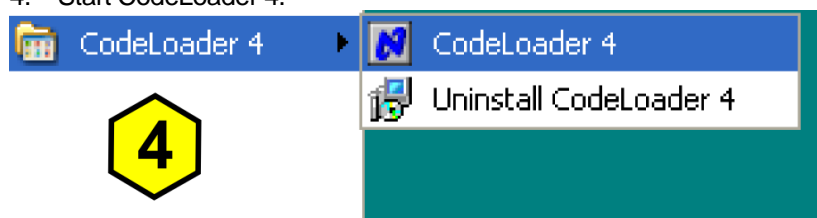
3



LPT Cable to PC

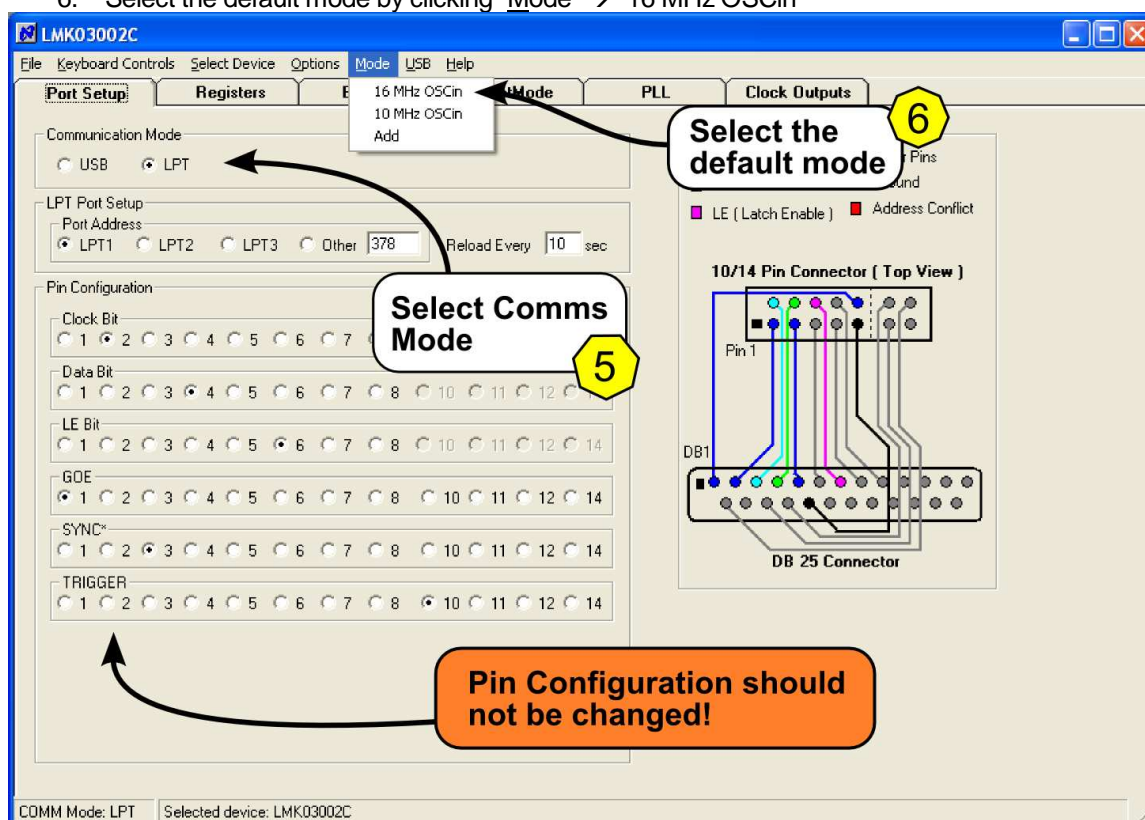
Read first, Basic Operation (Continued)

4. Start CodeLoader 4.



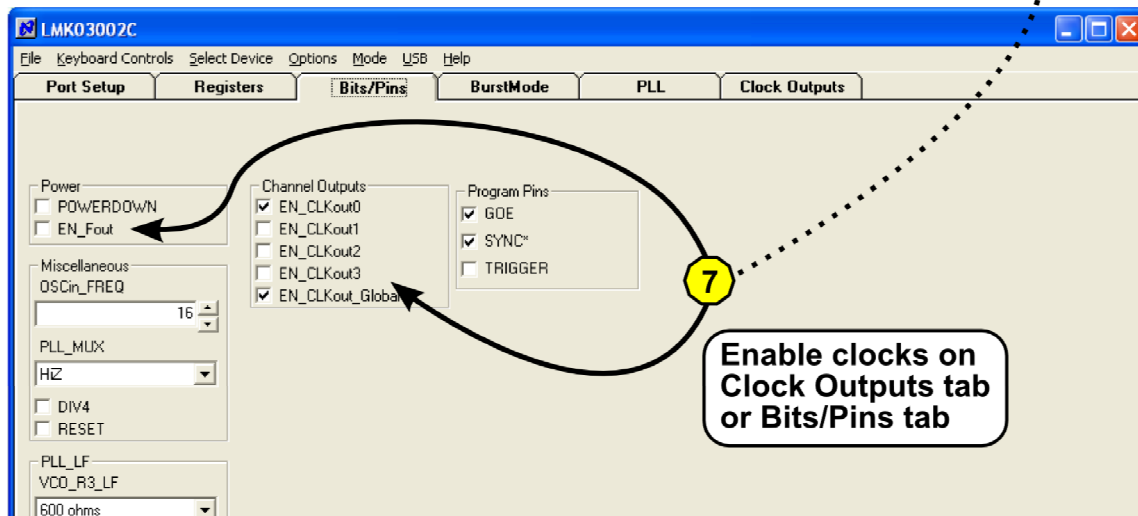
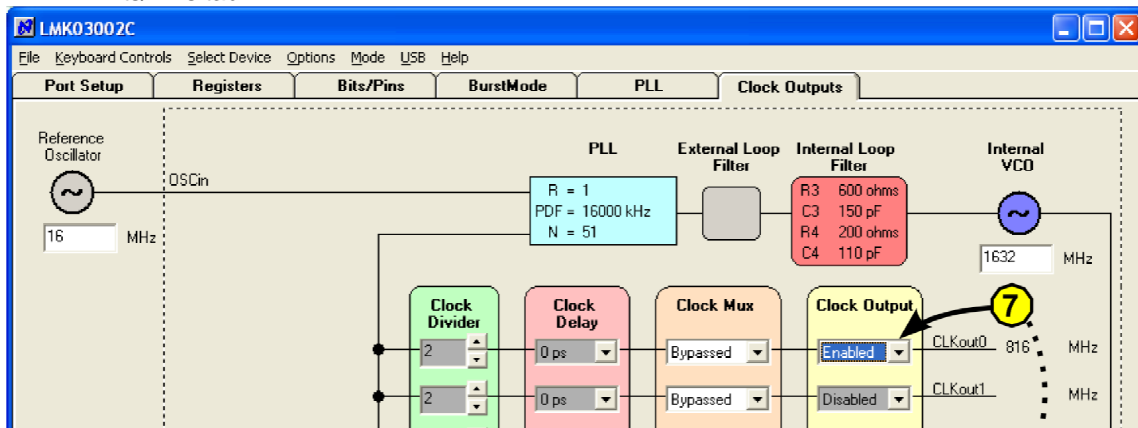
5. Select the USB or LPT Communication Mode on the Port Setup tab as appropriate.

6. Select the default mode by clicking "Mode" → "16 MHz OSCin"

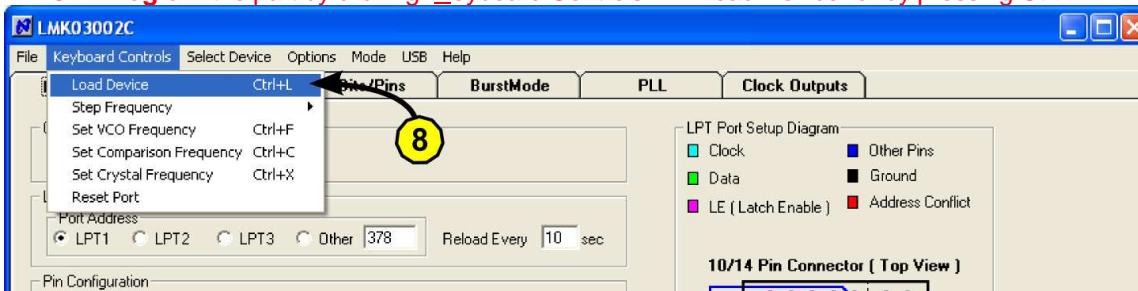


Read first, Basic Operation (Continued)

7. **Enable output to be measured**, any of CLKout(0-7) or EN_Fout from either Clock Outputs or Bits/Pins tab.



8. **Program the part by clicking "Keyboard Controls" → "Load Device" or by pressing Ctrl+L.**



9. **Make measurements...** After programming, the uWire cable can be unplugged from the evaluation board to minimize noise and EMI.

Board Information

OSCin

By default the board is configured to use the on-board crystal oscillator. It is also possible to use the board with a single ended or differential reference source at the OSCin port. Below are several possible configurations for driving OSCin.

OSCin using on board crystal oscillator [default]	
0 ohm	R8, R11, R20 [power to crystal oscillator], R109
39 ohm	R9 [can also be 0 ohm – depends on oscillator output power, 39 ohms to be a voltage divider]
51 ohm	R15
0.1 uF	C35, C36 (C5 is a 0.1 uF 0402 cap which may be moved to C36)
Open	C4, C5 R7, R10, R12, R13, R14, R16, R17, R79, R112

Differential OSCin setup	
0 ohm	R7, R8, R10, R13
100 ohm	R17
0.1 uF	C5, C35 (C36 is a 0.1 uF 0402 cap which may be moved to C5)
Open	C4, C36 R11, R12, R14, R15, R16, R79 R20 [remove power from crystal oscillator for noise reasons]

Single ended OSCin setup	
0 ohm	R7, R8
51 ohm	R15
0.1 uF	C35, C36 (C5 is a 0.1 uF 0402 cap which may be moved to C36)
Open	C4, C5 R10, R11, R12, R13, R14, R16, R17, R79 R20 [remove power from crystal oscillator for noise reasons]

Fout

Fout allows direct access to the internal VCO before the clock distribution section. The EN_Fout bit must be selected to enable Fout. A 3 dB pad is placed on R80, R81, and R82.

Loop Filter

R22 and R5 form a “resistor switch” which allows either one of two different loop filters to be selected.

Loop Filter	Resistor Switch	Loop Filter Components	Default Loop Bandwidth
Loop Filter #1 [default]	R22 Shorted	C1, C2, C2p, R2	105 kHz
Loop Filter #2	R5 Shorted	C1_AUX, C2_AUX, C2p_AUX, R2_AUX	55 Hz

Features of the board

- Either one of two loop filters can be selected by shorting either R22 or R5. More info about each loop filter can be found in the General Description and Appendix A.
- Test points for each of the uWire lines are scattered in the lower left corner of the board and include: GOE_TP, DATAuWire, CLKuWire, LEuWire, SYNC_TP, and LD_TP.
- **Ground** is located on the unstuffed 10 pin header on the left side of the board.
- **Ground** is located on the GND_tp2 in the upper left corner of the board and GND_tp1 located to the right of the Vcc SMA connector.
- **Ground** is located on the bottom side of the board on each pad of the unstuffed 10 pin header GND_J2.
- **Vcc** is located on the unstuffed 10 pin header on the upper left side of the board.
- **Vcc** is located on VccPlane test point located to the right of the Vcc SMA.
- **Vcc** is located on the bottom side of the board on each pad of the unstuffed 10 pin header VCC_J2

Other Important Notes

- When changing the OSCin frequency, the OSCin frequency register needs to be changed to match.
- Toggle the SYNC* pin to synchronize the clock outputs when in divided mode.
- For both loop filters, a helper silkscreen is offset from the loop filters to help identify the components according to National Semiconductor's traditional reference designators associated with loop filters.
- The LMK0300xC PCB works for many LMK0300xC devices. Because of this the silkscreen on the board is different from actual clock outputs in the datasheet and in CodeLoader. Refer to the table below for the correct mapping.

Datasheet / CodeLoader	LMK0300xC EVB PCB
CLKout0 / CLKout0*	CLKout4 / CLKout4*
CLKout1 / CLKout1*	CLKout5 / CLKout5*
CLKout2 / CLKout2*	CLKout6 / CLKout6*
CLKout3 / CLKout3*	CLKout7 / CLKout7*

Recommended Equipment

Power Supply

The Power Supply should be a low noise power supply. An Agilent 6623A Triple power supply with LC filters on the output to reduce noise was used in creating these evaluation board instructions.

Phase Noise / Spectrum Analyzer

For measuring phase noise an Agilent E5052A is recommended. An Agilent E4445A PSA Spectrum Analyzer with the Phase Noise option is also usable although the architecture of the E5052A is superior for phase noise measurements. At frequencies less than 100 MHz the local oscillator noise of the PSA is too high and measurements will be of the local oscillator, not the device under test.

Oscilloscope

For measuring delay an Agilent Infiniium DSO81204A was used.

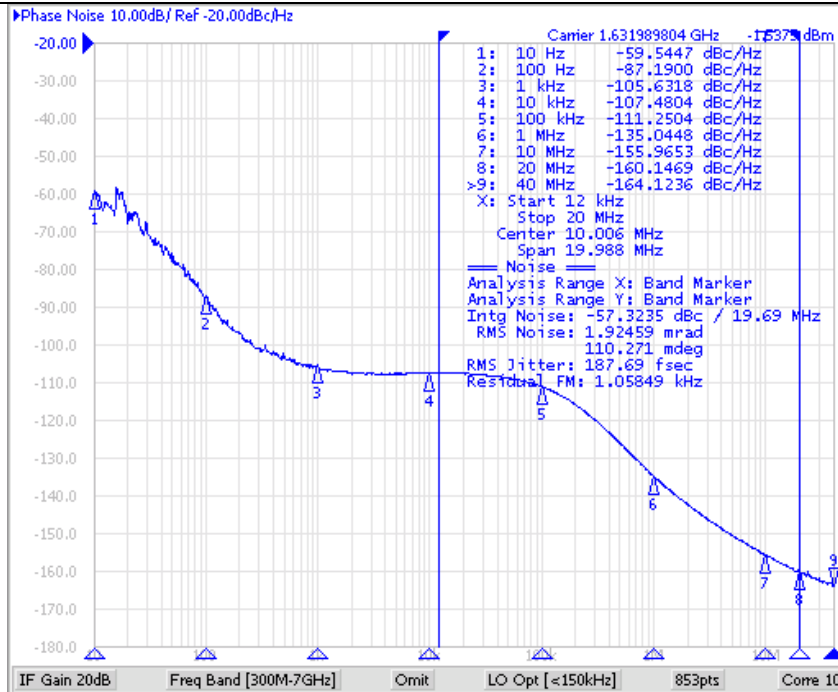
Reference Oscillator

The on board crystal oscillator will provide a low noise reference signal to the device at offsets greater than 1 kHz.

Note: The default loop filter has a loop bandwidth of ~105 kHz. Inside the loop bandwidth of a PLL the noise is greatly affected by any noise on the reference oscillator (OSCin). Therefore any noise on the oscillator less than ~105 kHz will be passed through and seen on the outputs. For this reason the main output of a Signal Generator is not recommended for driving OSCin in this setup.

Phase Noise

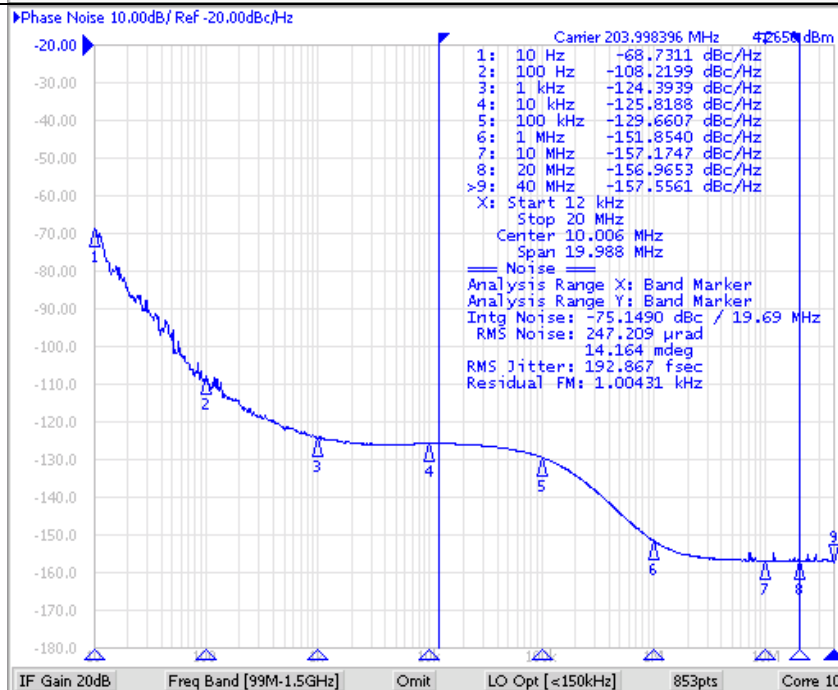
Output Frequency = 1632 MHz
Internal VCO, Fout output



Reference source is on board 16 MHz crystal

Below ~1 kHz phase noise is dominated by the crystal
10 Hz – 20 MHz integrated RMS jitter = 474 fs
100 Hz – 20 MHz integrated RMS jitter = 202 fs
12 kHz – 20 MHz integrated RMS jitter = 188 fs (shown)

LVPECL output CLKout0 (Labeled CLKout4 on EVB)
VCO Frequency = 1632 MHz, VCO_DIV=2, CLKout0_div=4
LVPECL output (204 MHz)



Reference source is on board 16 MHz crystal

Below ~1 kHz phase noise is dominated by the crystal
10 Hz – 20 MHz integrated RMS jitter = 636 fs
100 Hz – 20 MHz integrated RMS jitter = 205 fs
12 kHz – 20 MHz integrated RMS jitter = 193 fs (shown)

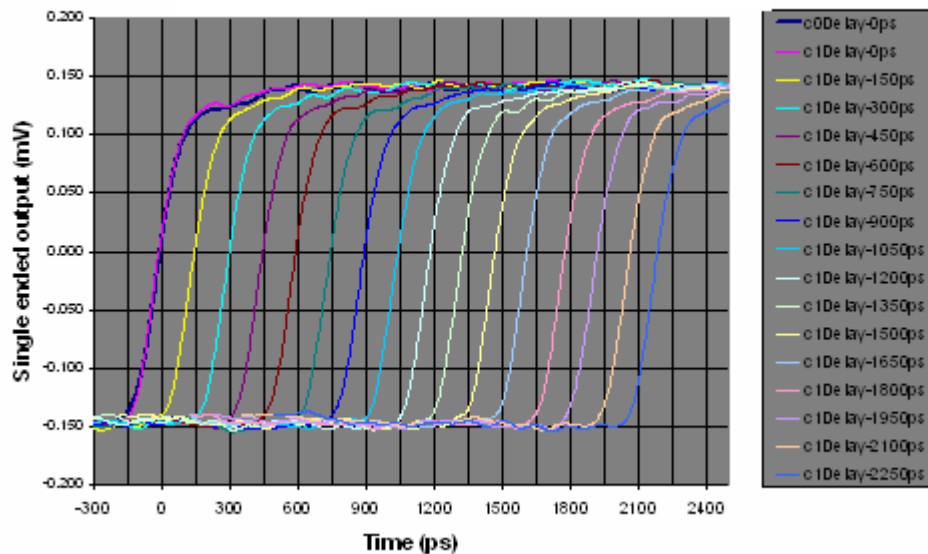
Delays

These delay measurements illustrate how skew errors due to different length traces may be tuned out. The delay may be adjusted in steps of 150 ps.



Delays 150, 300, 450, 600, 750

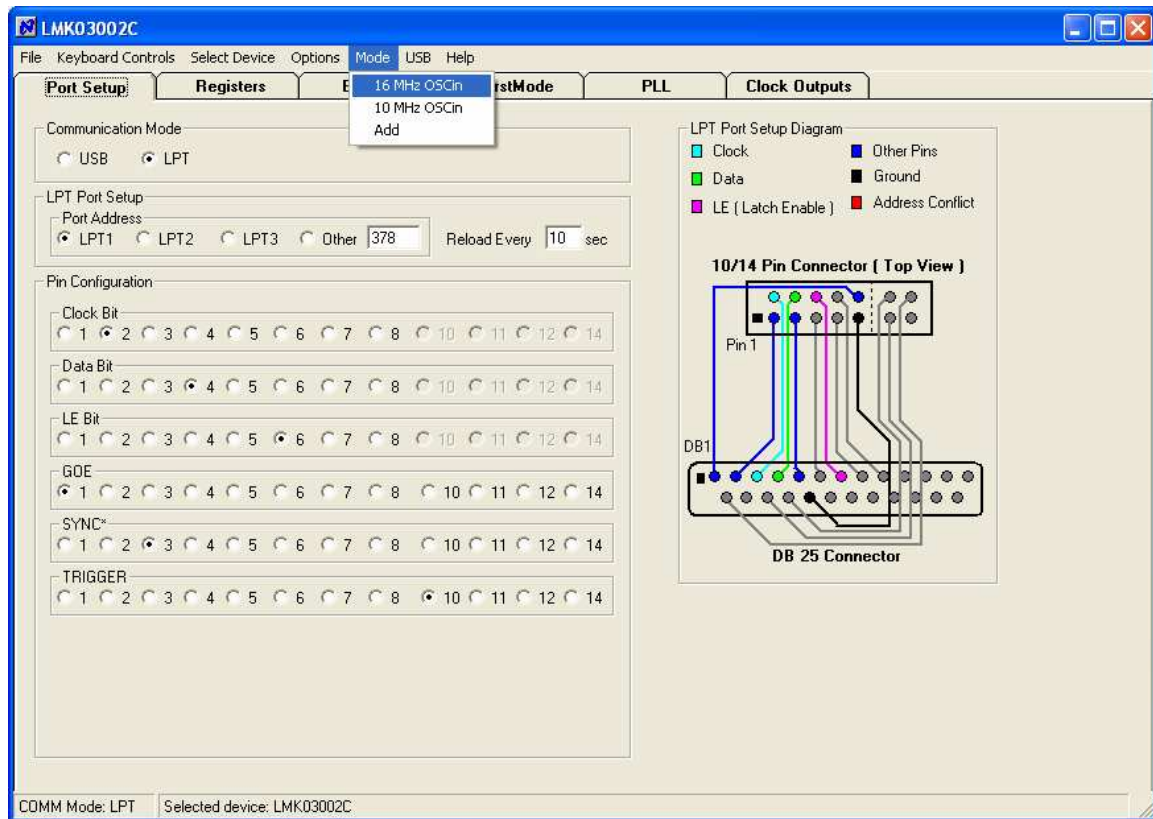
Delays from 0 to 2250 ps on CLKout1 referenced to CLKout0



CLKout0_DLY = 0 ps

CLKout1_DLY = all delays programmed: 0, 150, 300, 450, 600, 750, 900, 1050, 1200, 1350, 1500, 1650, 1800, 1950, 2100, and 2250 ps

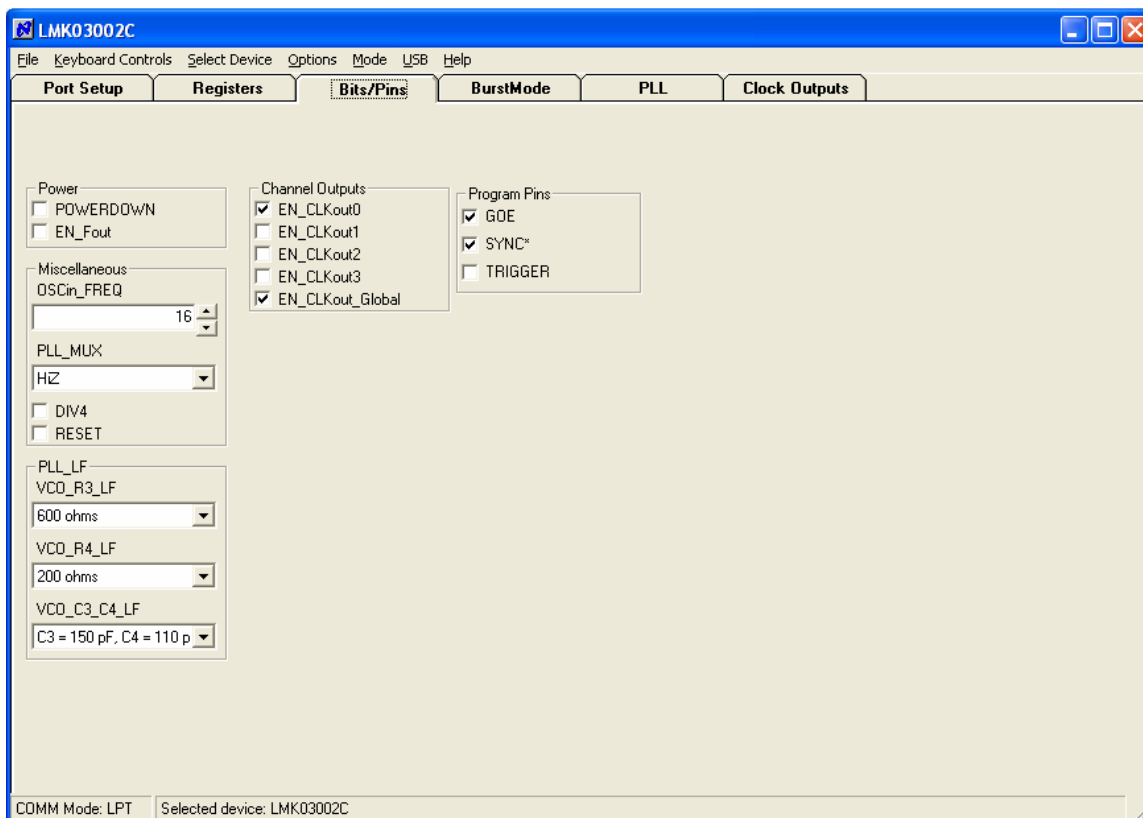
CodeLoader Settings



The Port Setup tab tells CodeLoader what signals are assigned to which pins. If this is wrong, the part will not program.

Part setup can be restored to the default state by clicking **Mode** → “16 MHz OSCin”. The default reference oscillator used for these instructions is 16 MHz and the restored mode expects a 16 MHz OSCin signal. **For the loaded mode to take affect the device must be loaded by pressing Ctrl+L.**

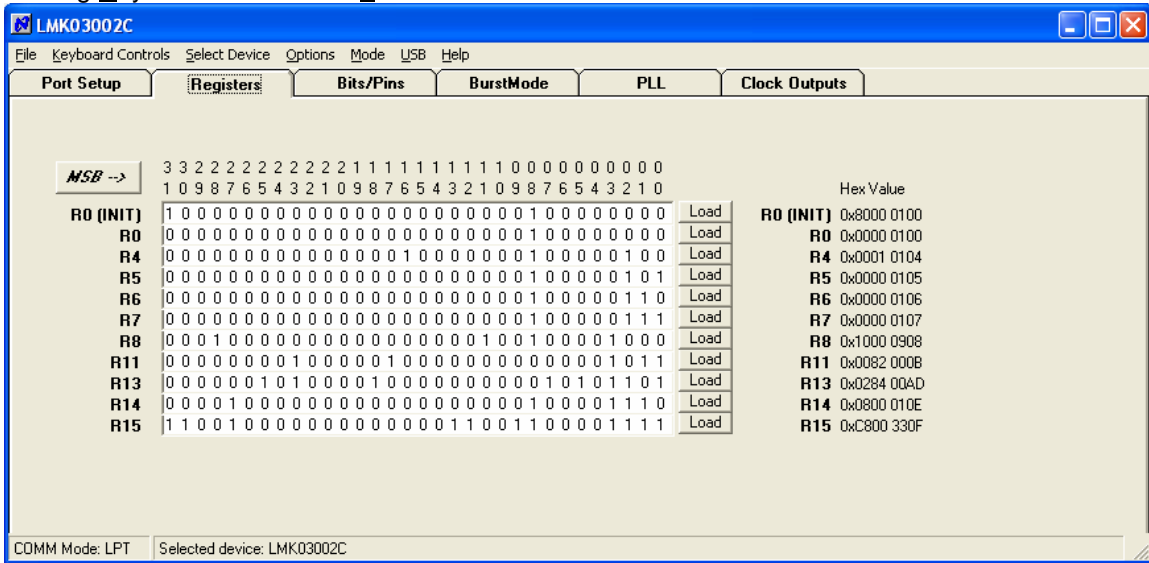
The Bits/Pins tab shows some of the internal registers which are not accessible from any of the other visual tabs like “PLL” and “Clock Outputs.” *Right click on any of the bits for description.*



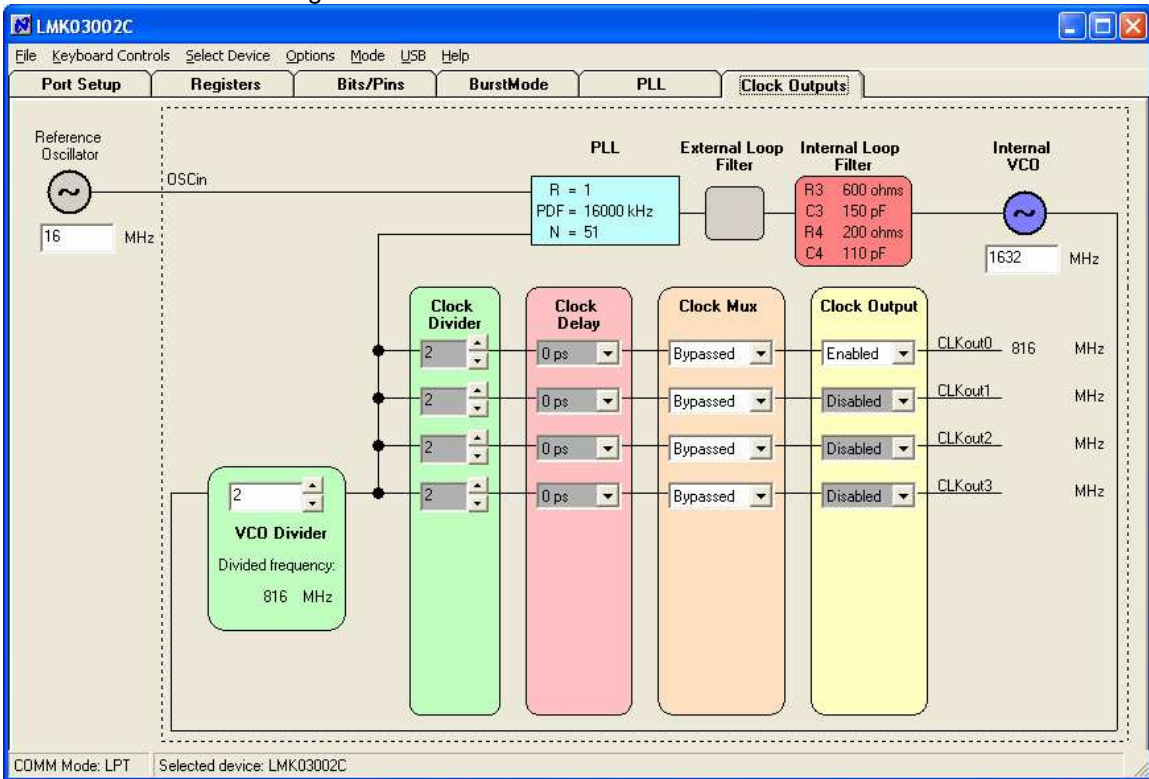
Program Bits	
POWERDOWN	Powers the part down.
EN_Fout	Turns on the Fout pin for measuring the internal VCO.
OSCin_FREQ	Must be set to the OSCin frequency in MHz.
PLL_MUX	Programmable to many different values to support Lock Detect or aid troubleshooting.
DIV4	Shall be checked for OSCin frequencies greater than 20 MHz.
RESET	The registers can be defaulted by checking and unchecking RESET. Software bits will not reflect this.
VCO_R3_LF VCO_R4_LF VCO_C3_C4_LF	Internal loop filter values, also accessible from Clock Outputs tab.
EN_CLKout0..3	Enable CLKout bits from CLKout0 to CLKout7. Also accessible from Clock Outputs tab.
EN_CLKout_Global	Enable all clock outs. If unselected then the EN_CLKouts are overridden and the outputs are all disabled.

Program Pins	
GOE	Set Global Output Enable to high or low logic level. GOE is not used. See Board Information section for usage of this pin.
SYNC*	Set SYNC* pin to high or low logic level.
TRIGGER	Set auxiliary trigger pin to high or low logic level.

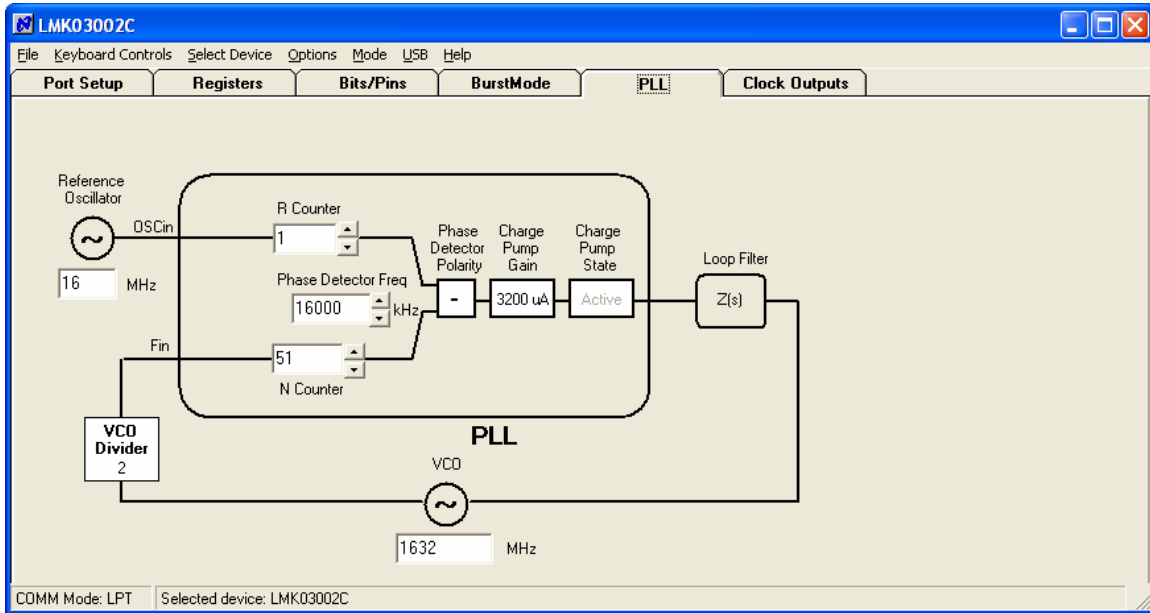
The Registers tab shows the raw bits which will be programmed when device is loaded by clicking Keyboard Controls → Load Device or Ctrl+L.



The Clock Outputs tab allows the user to visualize the clock distribution portions of the device. From this tab the device's dividers, delays, clock output muxes, and output drivers can be programmed along with internal loop filter values. The PLL block shows the R and N divider values however to change these values either click on the PLL tab or the blue PLL box to access the PLL tab to make changes to the PLL.



The PLL tab shows a conventional PLL diagram along with the VCO Divider. It is important to realize that the total effective N value is PLL N Counter * VCO Divider. This means that the **“channel spacing” is the Phase Detector Frequency * VCO Divider**. Depending on the situation, this may require the R Counter multiplied up by the value of the VCO Divider to achieve desired VCO output frequencies.

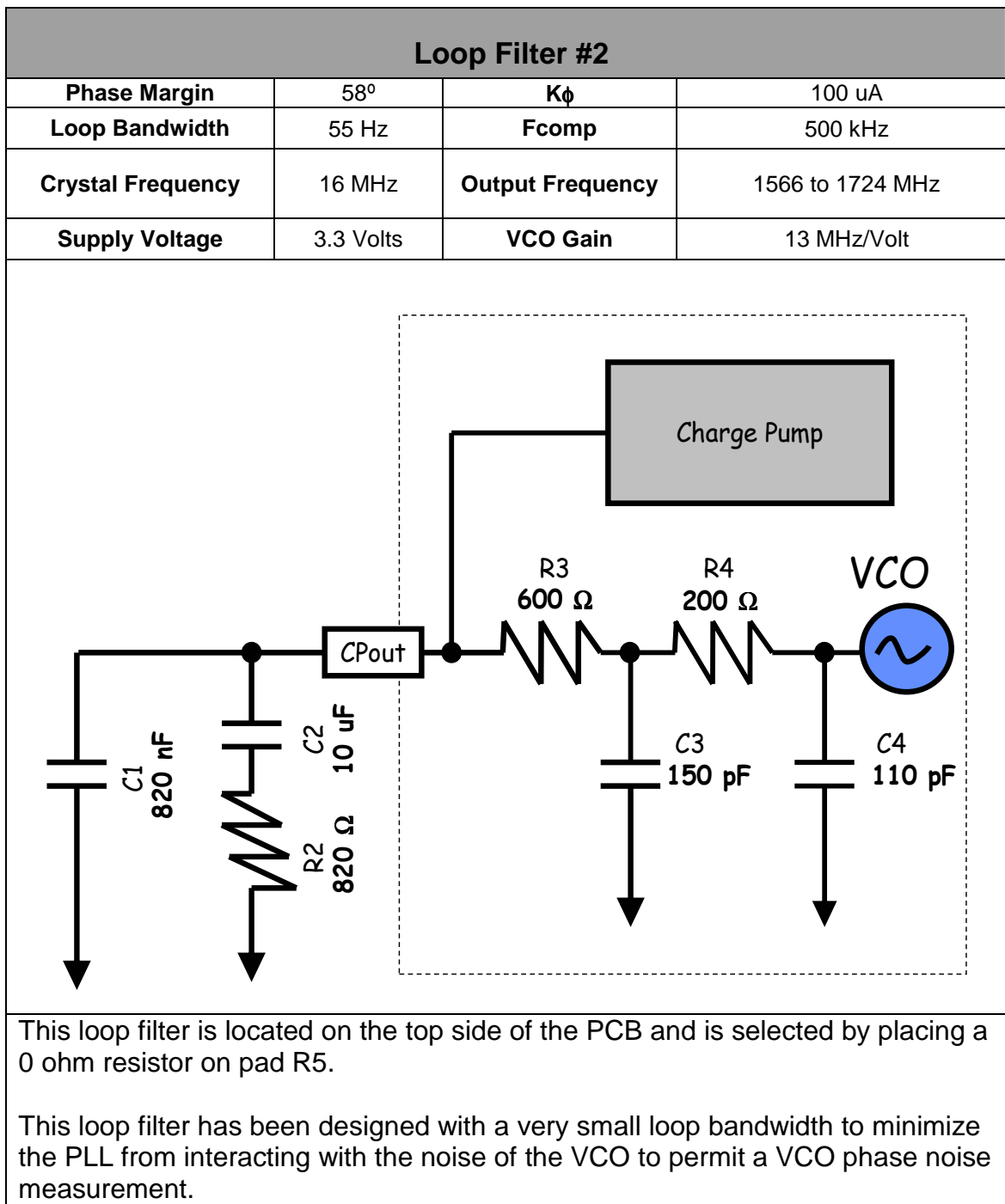


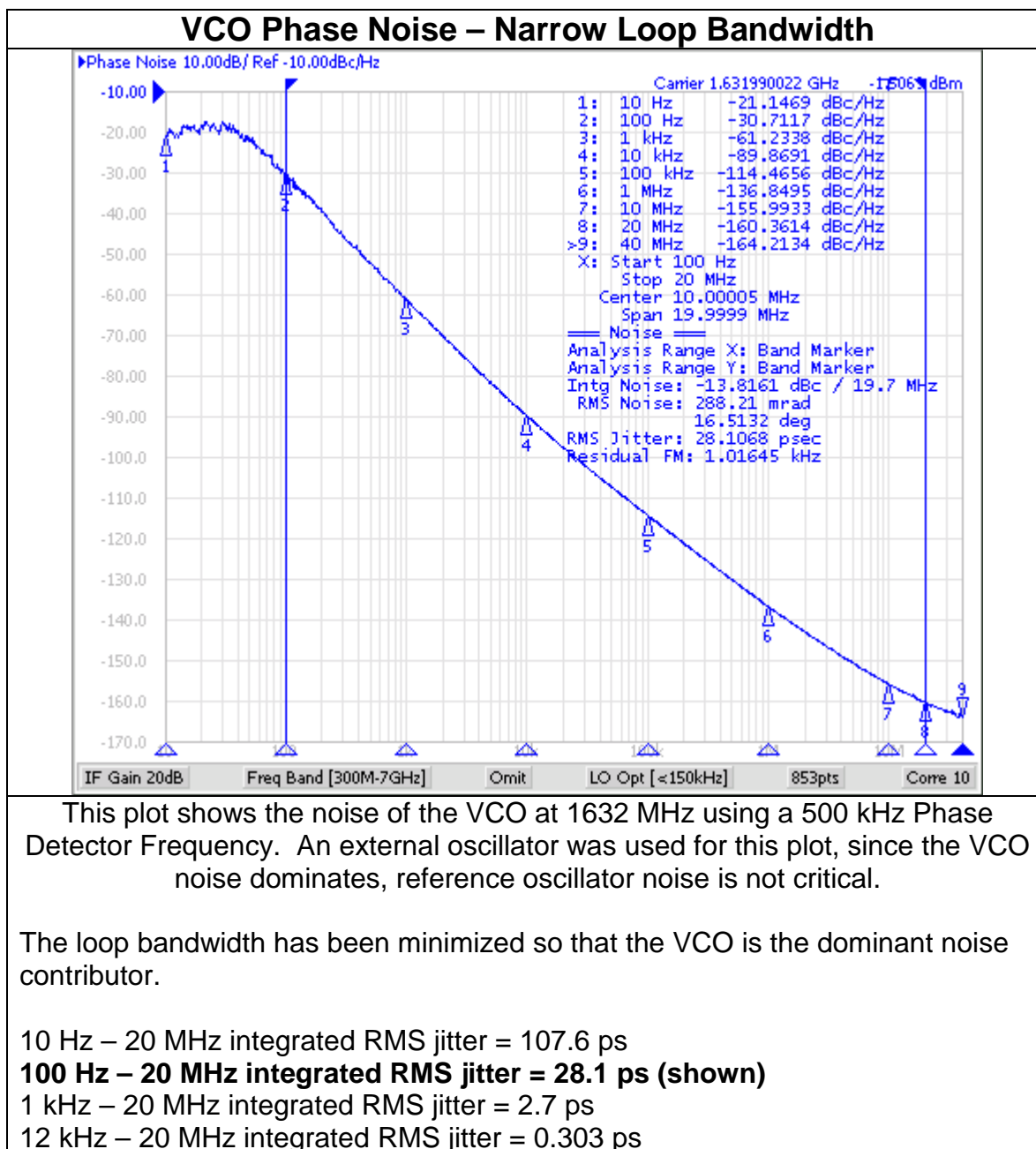
Example: If the desired VCO output frequency was 1648 MHz, R would need to be increased to 2 before 1648 MHz could be programmed because of the VCO Divider of 2 would only allow programming of 1600, 1632, 1664, etc. with a 16 MHz phase detector frequency – because changing the N counter from 51 to 52 changes to total N by two, 102 to 104!

Appendix A: VCO Performance

The internal VCO performance is measured by using a narrow bandwidth loop filter. By default the narrow loop bandwidth filter is stuffed as Loop Filter #2 in positions C1_AUX, C2_AUX, C2p_AUX, and R2_AUX and has a loop bandwidth of 55 Hz.

See the Loop Filter section in Board Options for more detail about switching between the two different loop filters.



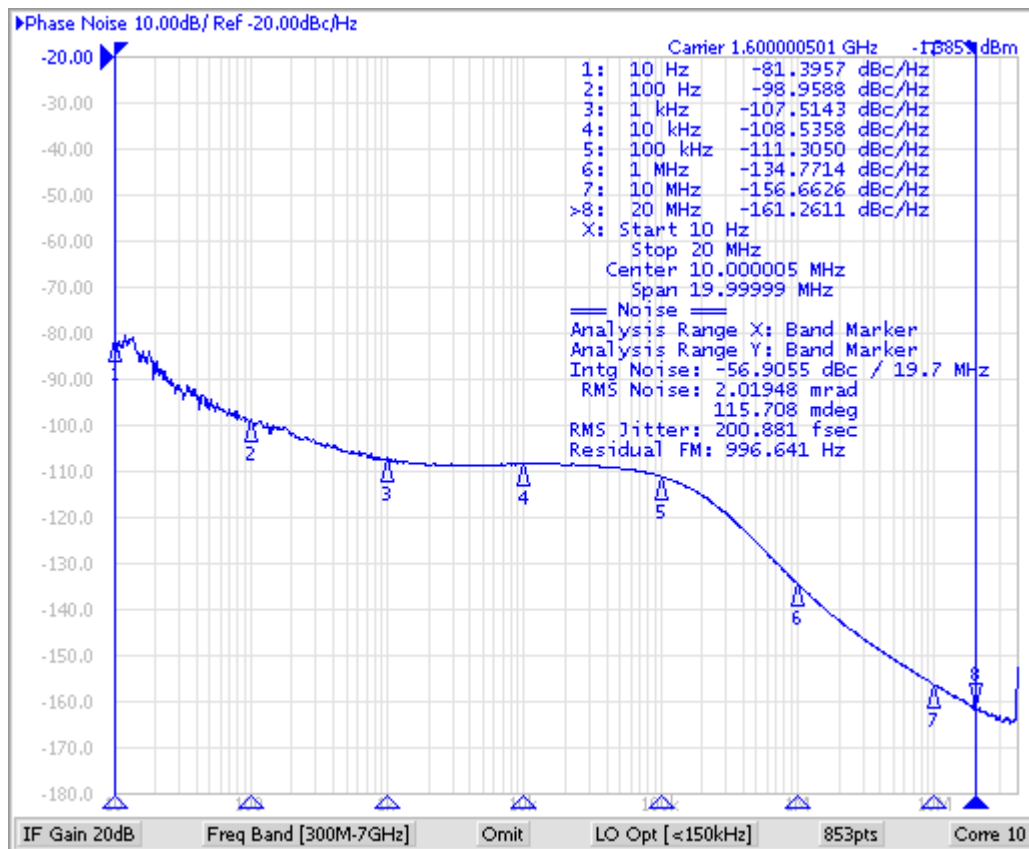


Appendix B: Impact of Reference on Phase Noise

Inside the loop bandwidth of a PLL the phase noise is set by the quality of the reference oscillator used. For this reason it is important to select a reference oscillator suitable for the application.

Test Setup

Using the same loop filter as described in the General Description and by driving the OSCin frequency with an ultra low jitter 100 MHz Wetzel Crystal (501-04517D) and setting R = 5 to achieve a phase detector frequency of 20 MHz. A very low integrated RMS jitter of 201 fs is measured vs. the 474 fs measured in the Phase Noise section with 16 MHz crystal in the bandwidth of 10 Hz to 20 MHz.



10 Hz – 20 MHz integrated RMS jitter = 201 fs (shown)

100 Hz – 20 MHz integrated RMS jitter = 197 fs

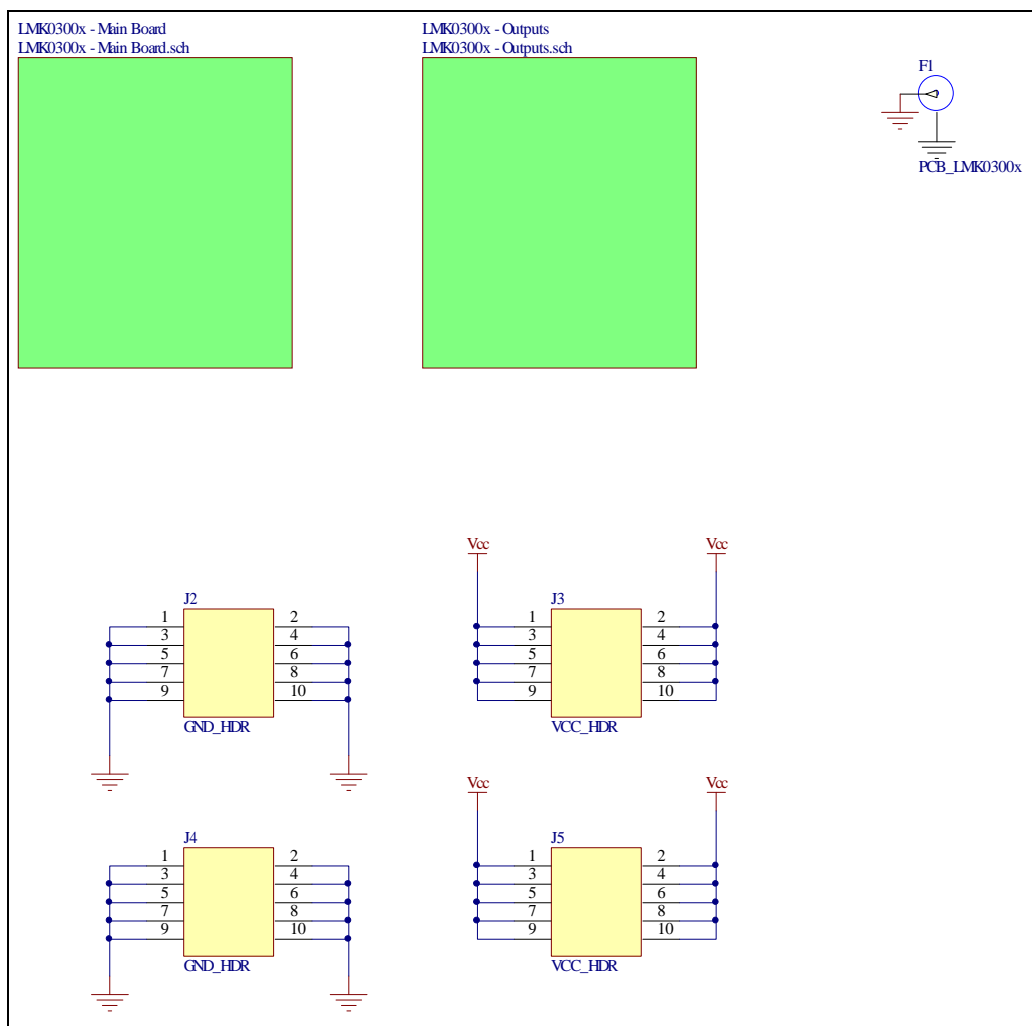
1 kHz – 20 MHz integrated RMS jitter = 196 fs

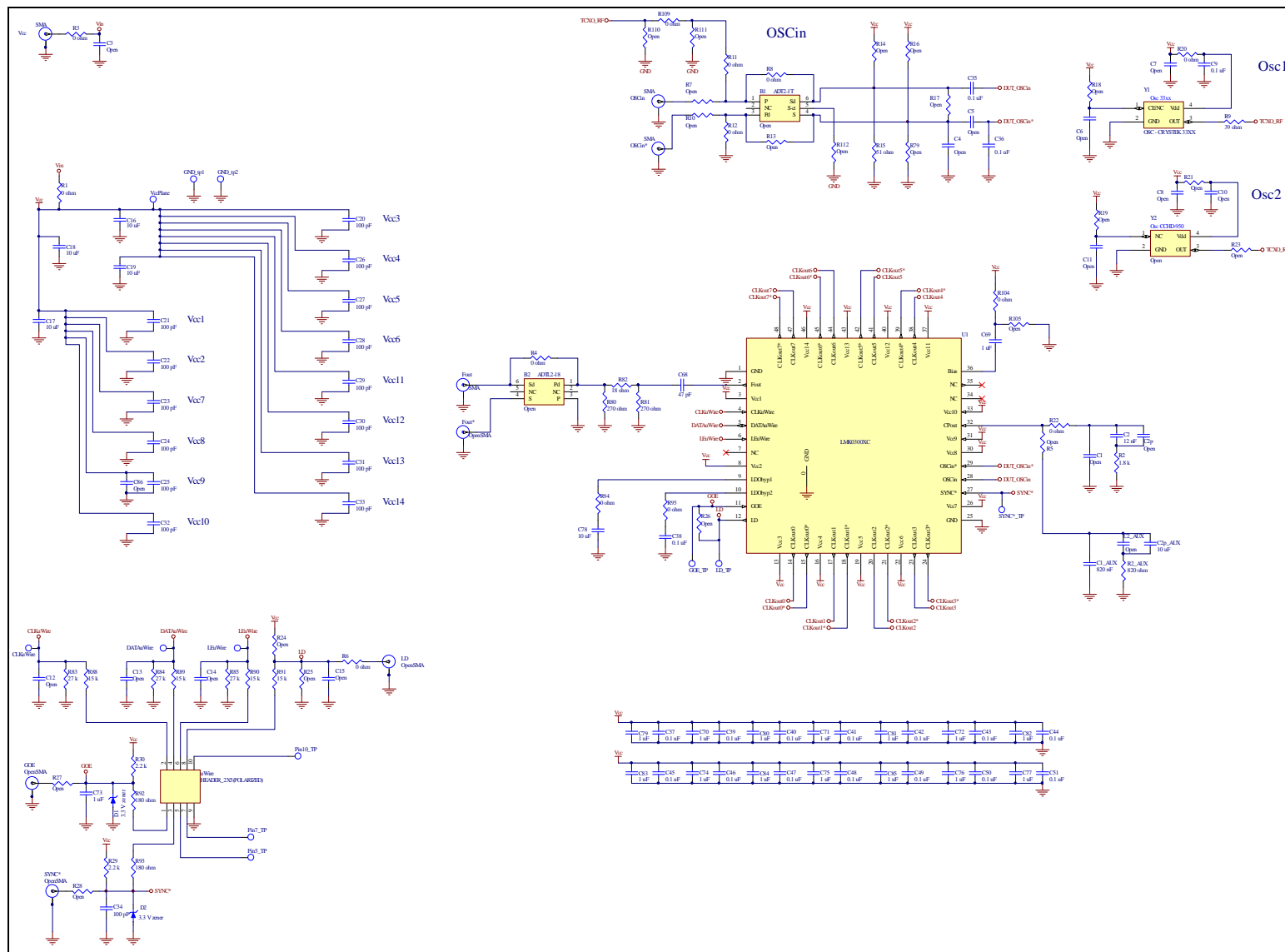
12 kHz – 20 MHz integrated RMS jitter = 188 fs

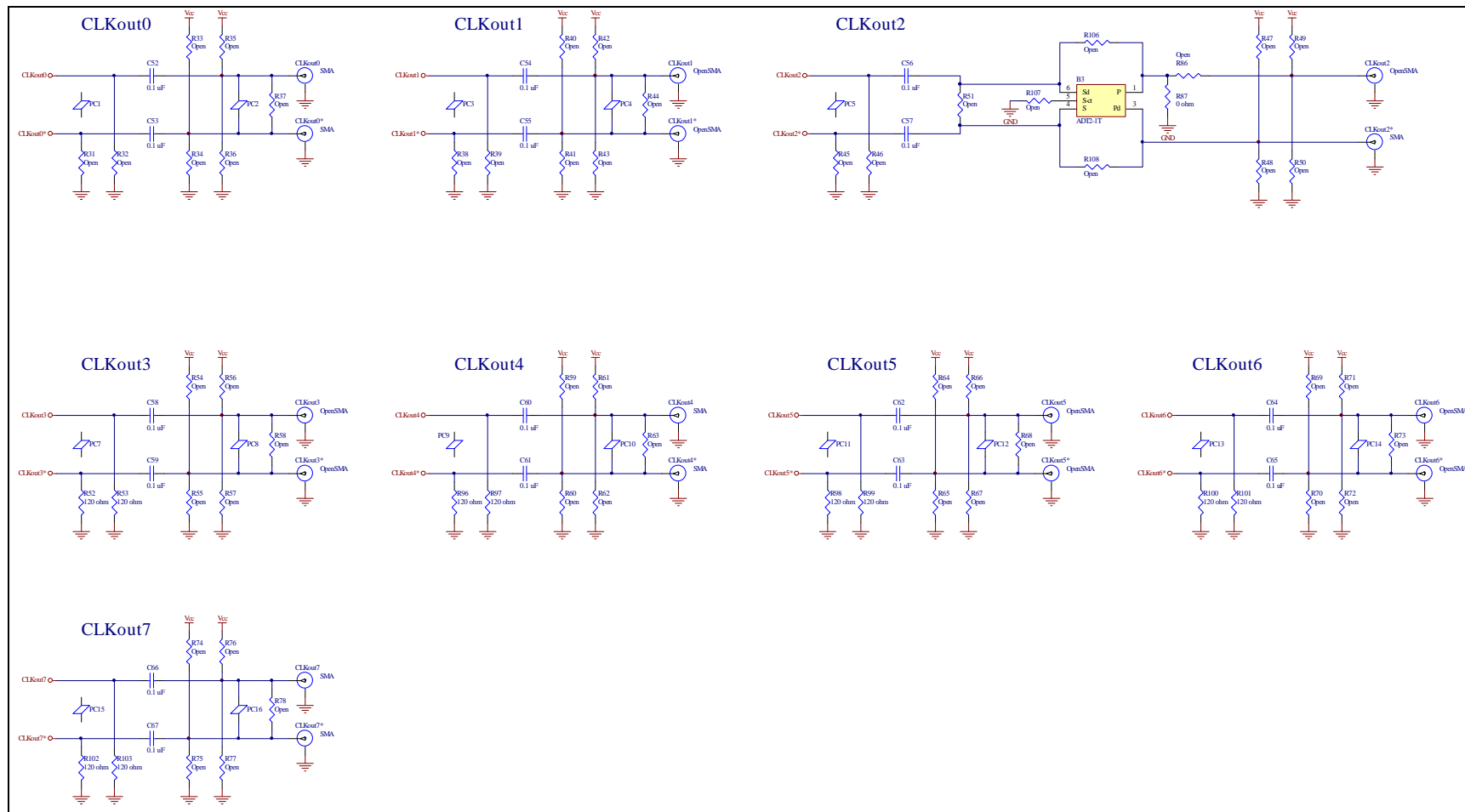
Conclusion

This diagram illustrates how the phase noise inside the loop bandwidth is set by the quality of the reference oscillator used. Phase noise outside the loop bandwidth is set by the VCO noise level.

Appendix C: Schematics



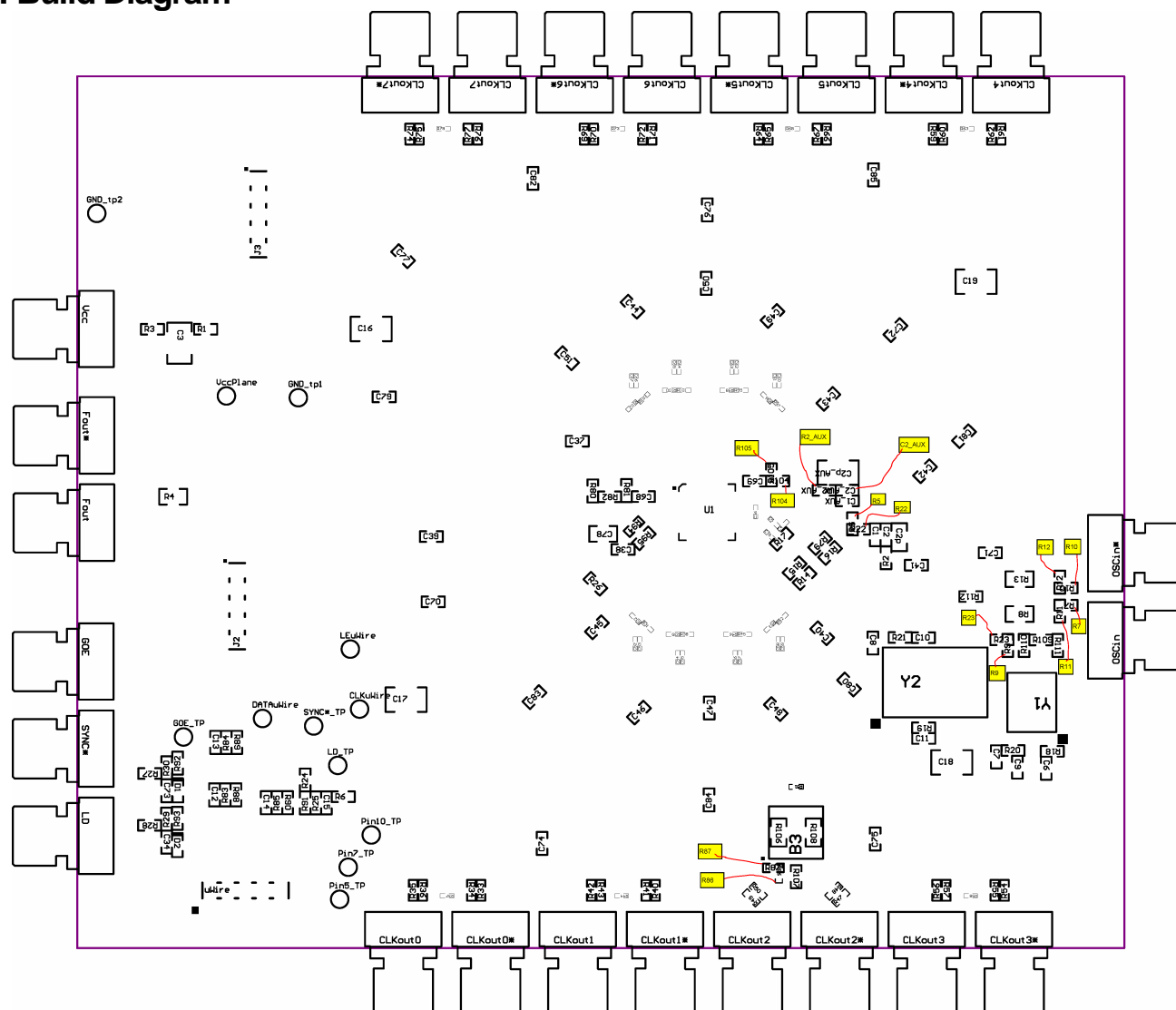




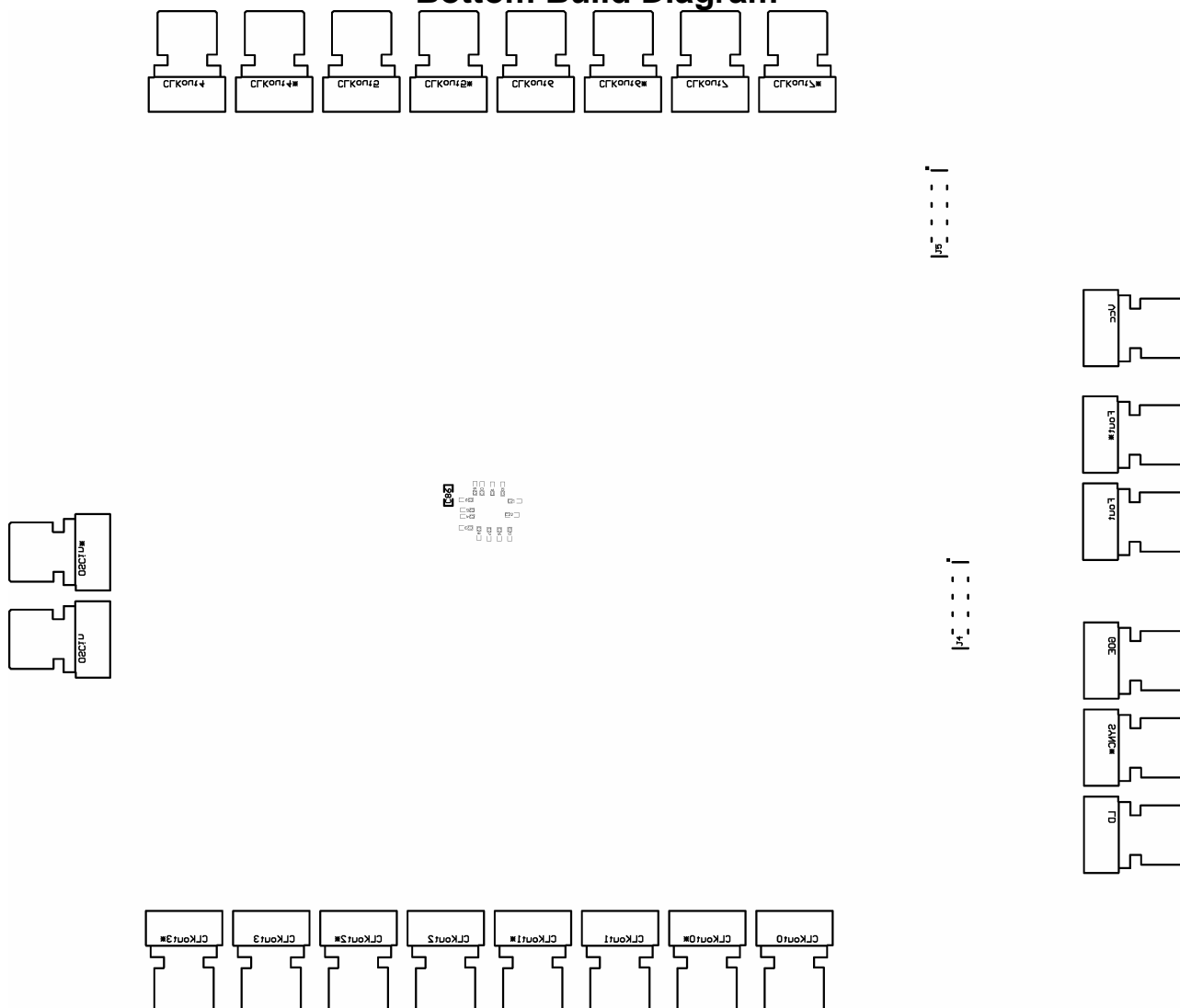
Appendix D: Bill of Materials

Part	Manufacturer	Part Number	Qty	Identifier
Capacitors				
47 pF	Kemet	C0603C470J5GAC	1	C68
100 pF	Kemet	C0402C101J5GAC	14	C20, C21, C22, C23, C24, C25, C26, C27, C28, C29, C30, C31, C32, C33
100 pF	Kemet	C0603C101J5GAC	1	C34
12 nF	Kemet	C0603C123K1RACTU	1	C2
0.1 uF	Kemet	C0603C104J3RAC	16	C9, C37, C38, C39, C40, C41, C42, C43, C44, C45, C46, C47, C48, C49, C50, C51
0.1 uF	Kemet	C0402C104J4RAC	18	C35, C36, C52, C53, C54, C55, C56, C57, C58, C59, C60, C61, C62, C63, C64, C65, C66, C67
820 nF	Kemet	C0603C824K8PAC	1	C1_AUX
1 uF	Kemet	C0603C105K8VAC	16	C69, C70, C71, C72, C73, C74, C75, C76, C77, C79, C80, C81, C82, C83, C84, C85
10 uF	Kemet	C0805C106K9PAC	5	C2p_AUX, C16, C17, C18, C19
10 uF	Kemet	C0805C106K9PAC	1	C78
Resistors				
0 ohm	Vishay	CRCW0603000ZRT1	10	R1, R3, R6, R11, R12, R20, R22, R95, R104, R109
0 ohm	Yageo	RC0805JR-070RL	2	R4, R8
0 ohm	Vishay	CRCW0603000ZRT1	2	R87, R94
18 ohm	Vishay	CRCW0603180JRT1	1	R82
39 ohm	Vishay	CRCW0603390JRT1	1	R9
51 ohm	Vishay/Dale	CRCW060351R0JNEA	1	R15
120 ohm	Vishay	CRCW0402120RJNED	10	R52, R53, R96, R97, R98, R99, R100, R101, R102, R103
180 ohm	Vishay	CRCW0603181JRT1	2	R92, R93
270 ohm	Vishay	CRCW0603271JRT1	2	R80, R81
820 ohm	Vishay	CRCW0603821JRT1	1	R2_AUX
1.8 k	Vishay/Dale	CRCW06031K80JNEA	1	R2
2.2 k	Vishay/Dale	CRCW06032K20JNEA	2	R29, R30

15 k	Vishay	CRCW0603153JRT1	4	R88, R89, R90, R91
27 k	Vishay	CRCW0603273JRT1	3	R83, R84, R85
Other				
LMK0300xC	National Semiconductor	LMK03002CI	1	U1
OSC - CRYSTEK 33xx	Crystek	C3391-16.000	1	Y1
ADT2-1T	Minicircuits	ADT2-1T	1	B3
SMA	Johnson Components	142-0701-851	11	CLKout0, CLKout0*, CLKout2*, CLKout4, CLKout4*, CLKout7, CLKout7*, Fout, OSCin, OSCin*, Vcc
3.3 V zener	Comchip	CZRU52C3V3	2	D1, D2
PCB_LMK0300x	Printed Circuits Corp	PCB_LMK0300x rev 1.1, 6-16-2007	1	F1
HEADER_2X5(POLARIZED)	FCI Electronics	52601-S10-8	1	uWire
SPCS-8	SPC Technology	SPCS-8	4	Standoffs in the four corners (insert from bottom)
Open				
Open	-	Open	2	B1, B2
Open	-	603	32	C1, C2_AUX, C6, C7, C8, C10, C11, C12, C13, C14, C15, R5, R7, R10, R14, R16, R17, R18, R19, R21, R23, R24, R25, R26, R27, R28, R79, R105, R107, R110, R111, R112
Open	-	805	1	C2p
Open	-	Open	1	C3
Open	-	402	16	C4, C5, R31, R32, R37, R38, R39, R44, R45, R46, R51, R58, R63, R68, R73, R78
Open	-	603	34	C86, R33, R34, R35, R36, R40, R41, R42, R43, R47, R48, R49, R50, R54, R55, R56, R57, R59, R60, R61, R62, R64, R65, R66, R67, R69, R70, R71, R72, R74, R75, R76, R77, R86
OpenSMA	-	Open	13	CLKout1, CLKout1*, CLKout2, CLKout3, CLKout3*, CLKout5, CLKout5*, CLKout6, CLKout6*, Fout*, GOE, LD, SYNC*
Open	-	HEADER_2X5	2	J2, J4
Open	-	HEADER_2X5	2	J3, J5
Open	-	805	3	R13, R106, R108
Open	-	Open	1	Y2



Bottom Build Diagram



IMPORTANT NOTICE

Texas Instruments Incorporated and its subsidiaries (TI) reserve the right to make corrections, modifications, enhancements, improvements, and other changes to its products and services at any time and to discontinue any product or service without notice. Customers should obtain the latest relevant information before placing orders and should verify that such information is current and complete. All products are sold subject to TI's terms and conditions of sale supplied at the time of order acknowledgment.

TI warrants performance of its hardware products to the specifications applicable at the time of sale in accordance with TI's standard warranty. Testing and other quality control techniques are used to the extent TI deems necessary to support this warranty. Except where mandated by government requirements, testing of all parameters of each product is not necessarily performed.

TI assumes no liability for applications assistance or customer product design. Customers are responsible for their products and applications using TI components. To minimize the risks associated with customer products and applications, customers should provide adequate design and operating safeguards.

TI does not warrant or represent that any license, either express or implied, is granted under any TI patent right, copyright, mask work right, or other TI intellectual property right relating to any combination, machine, or process in which TI products or services are used. Information published by TI regarding third-party products or services does not constitute a license from TI to use such products or services or a warranty or endorsement thereof. Use of such information may require a license from a third party under the patents or other intellectual property of the third party, or a license from TI under the patents or other intellectual property of TI.

Reproduction of TI information in TI data books or data sheets is permissible only if reproduction is without alteration and is accompanied by all associated warranties, conditions, limitations, and notices. Reproduction of this information with alteration is an unfair and deceptive business practice. TI is not responsible or liable for such altered documentation. Information of third parties may be subject to additional restrictions.

Resale of TI products or services with statements different from or beyond the parameters stated by TI for that product or service voids all express and any implied warranties for the associated TI product or service and is an unfair and deceptive business practice. TI is not responsible or liable for any such statements.

TI products are not authorized for use in safety-critical applications (such as life support) where a failure of the TI product would reasonably be expected to cause severe personal injury or death, unless officers of the parties have executed an agreement specifically governing such use. Buyers represent that they have all necessary expertise in the safety and regulatory ramifications of their applications, and acknowledge and agree that they are solely responsible for all legal, regulatory and safety-related requirements concerning their products and any use of TI products in such safety-critical applications, notwithstanding any applications-related information or support that may be provided by TI. Further, Buyers must fully indemnify TI and its representatives against any damages arising out of the use of TI products in such safety-critical applications.

TI products are neither designed nor intended for use in military/aerospace applications or environments unless the TI products are specifically designated by TI as military-grade or "enhanced plastic." Only products designated by TI as military-grade meet military specifications. Buyers acknowledge and agree that any such use of TI products which TI has not designated as military-grade is solely at the Buyer's risk, and that they are solely responsible for compliance with all legal and regulatory requirements in connection with such use.

TI products are neither designed nor intended for use in automotive applications or environments unless the specific TI products are designated by TI as compliant with ISO/TS 16949 requirements. Buyers acknowledge and agree that, if they use any non-designated products in automotive applications, TI will not be responsible for any failure to meet such requirements.

Following are URLs where you can obtain information on other Texas Instruments products and application solutions:

Products

Audio	www.ti.com/audio
Amplifiers	amplifier.ti.com
Data Converters	dataconverter.ti.com
DLP® Products	www.dlp.com
DSP	dsp.ti.com
Clocks and Timers	www.ti.com/clocks
Interface	interface.ti.com
Logic	logic.ti.com
Power Mgmt	power.ti.com
Microcontrollers	microcontroller.ti.com
RFID	www.ti-rfid.com
OMAP Mobile Processors	www.ti.com/omap
Wireless Connectivity	www.ti.com/wirelessconnectivity

Applications

Automotive and Transportation	www.ti.com/automotive
Communications and Telecom	www.ti.com/communications
Computers and Peripherals	www.ti.com/computers
Consumer Electronics	www.ti.com/consumer-apps
Energy and Lighting	www.ti.com/energy
Industrial	www.ti.com/industrial
Medical	www.ti.com/medical
Security	www.ti.com/security
Space, Avionics and Defense	www.ti.com/space-avionics-defense
Video and Imaging	www.ti.com/video

TI E2E Community Home Page

e2e.ti.com

Mailing Address: Texas Instruments, Post Office Box 655303, Dallas, Texas 75265
Copyright © 2012, Texas Instruments Incorporated