

MATERIAL AND FINISH:

Insulator: PA6+25% Glass filled, black, UL-94-HB rated

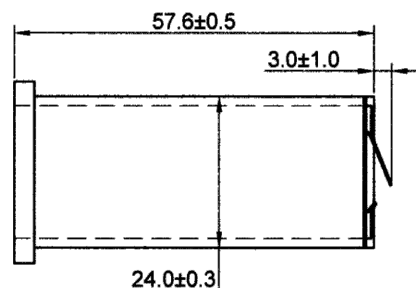
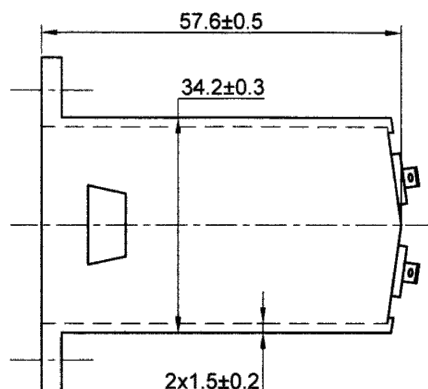
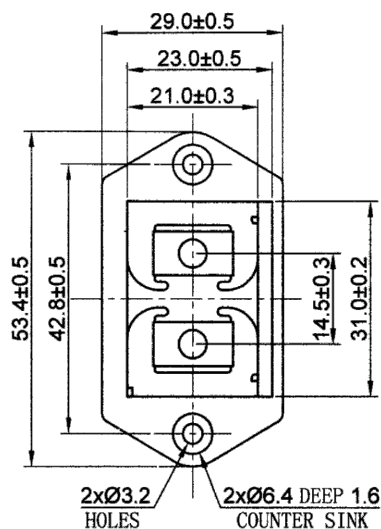
Contacts: Phosphor Bronze, Nickel plated

Spring: Stainless Spring Steel

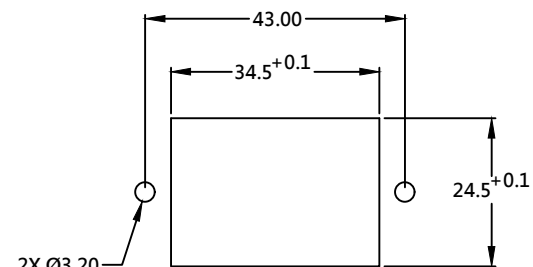
ENVIRONMENTAL

Operating temperature: -30°C TO +70°C

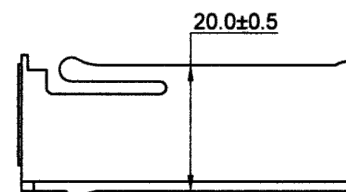
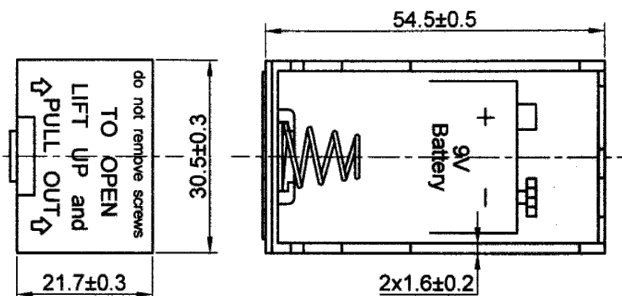
RoHS
COMPLIANT



COVER



RECOMMENDED
PANEL CUTOUT



BOTTOM

REVISIONS

REV	DATE	CHANGE	CHNG	CHK	APPR
A	12/98	UPDATED DRAWING	SS	JD	AH
B	12/27/99	REVISED DIM & SPECS.	PB	TD	SS
C	02/27/02	REVISED / UPDATED	GQ	TD	PB
D	3/25/25	REVISED	PB		

TOLERANCE UNLESS OTHERWISE SPECIFIED

X	± 1
X.X	± 0.4
X.XX	± 0.20

DRAWN BY	SS	DATE:	1/11/95
CHECK BY	JD	DATE:	1/12/95
APPR BY	AH	DATE:	1/12/95

Power Dynamics, Inc.

Phone: 973 560-0019 Whippany, New Jersey Fax: 973 560-0076

PART: 1 CELL PP3 (6R61) 9V BATTERY HOLDER,
PANEL MOUNT, SOLDER TERMINALS

PART #: **B23**

SIZE: A

SCALE: NTS

ALL DIMENSIONS FOR REFERENCE ONLY
DIMENSIONS ARE IN MILLIMETERS

SHEET
1 of 1

REV: D