

PRODUCT NUMBER

6 4 9 9 1 - X X X - X X X X X LF

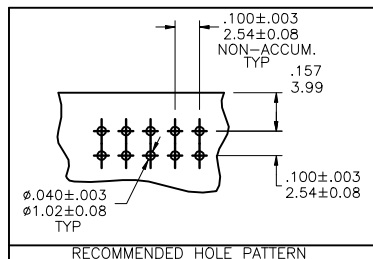
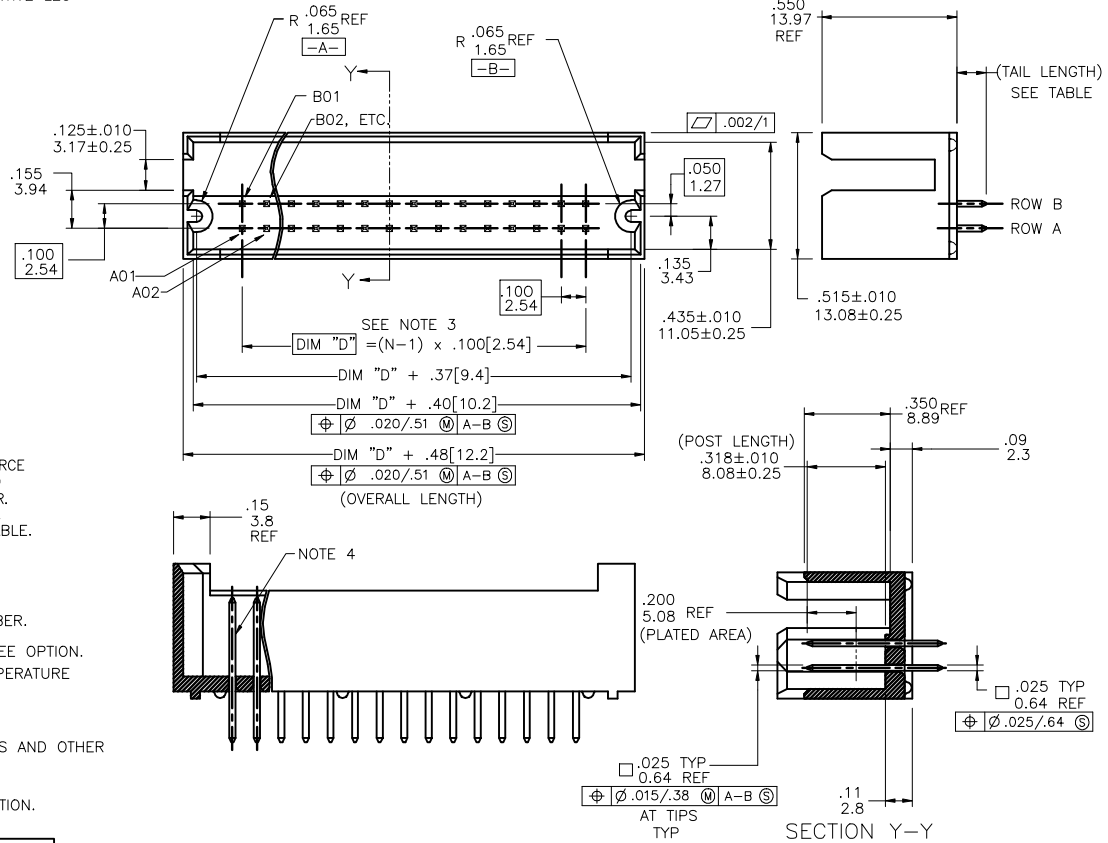
PLATING
NOTE 12

S=15μ" [0.38μm] GOLD/GXT
ON CONTACT AREA
100μ" [2.54μm] PURE TIN
ON TAIL
G=30μ" [0.76μm] GOLD/GXT
ON CONTACT AREA
100μ" [2.54μm] PURE TIN
ON TAIL

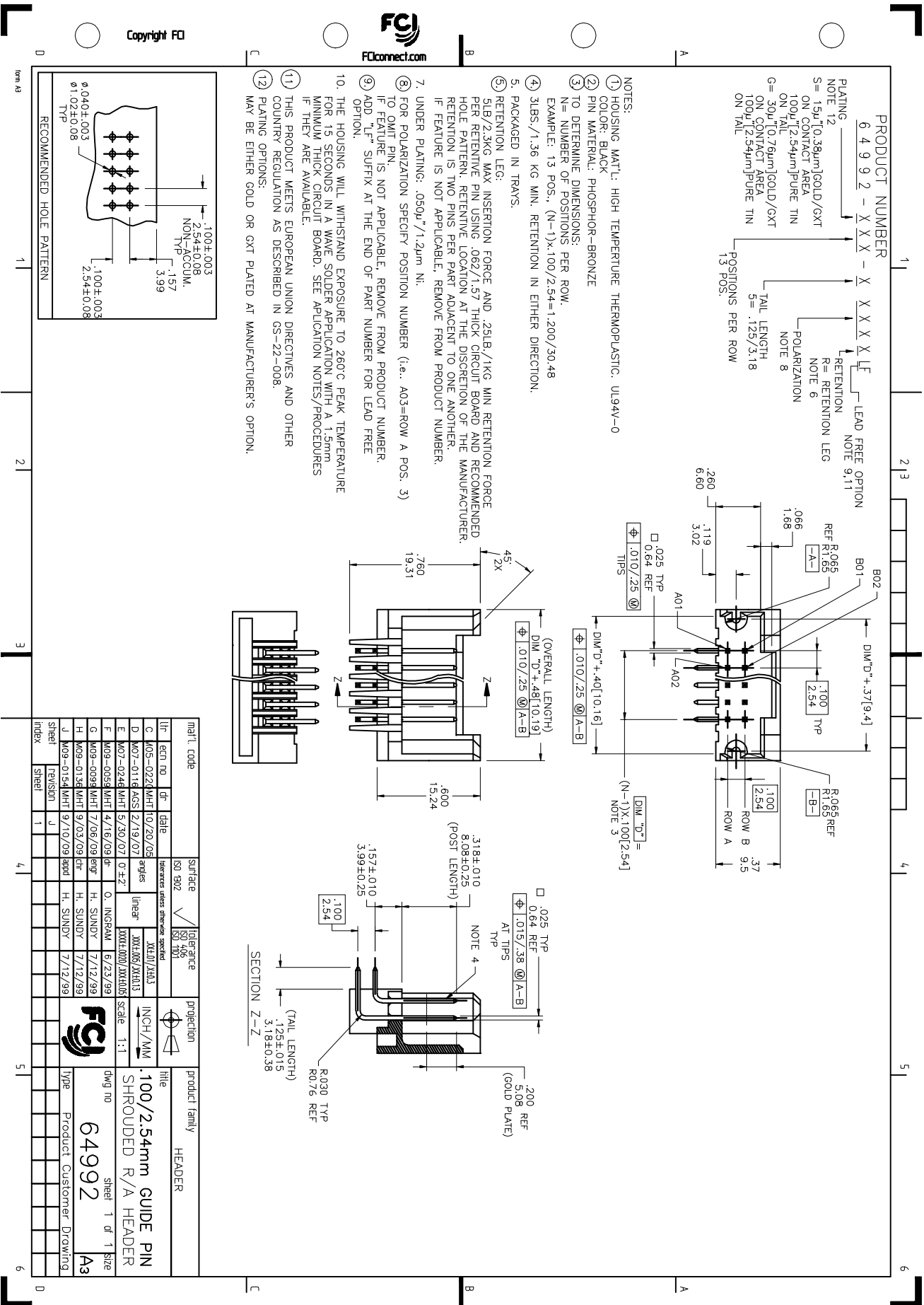
STYLE	TAIL LENGTH
3	.090/2.29
4	.120/3.05

POSITIONS PER ROW
05 TO 50

- ① HOUSING MAT'L: HIGH TEMPERATURE THERMOPLASTIC. UL94V-0
COLOR: NATURAL
- ② PIN MATERIAL: PHOSPHOR-BRONZE
- ③ TO DETERMINE DIMENSION
N= NUMBER OF POSITS PER ROW
EXAMPLE: 10 POS., (N-1) X .100/2.54=.900/22.87
- ④ 3LBS./1.36 KG MIN. RETENTION IN EITHER DIRECTION.
5. PACKAGED IN TRAYS.
- ⑥ RETENTIVE LEG:
5LB/2.3KG MAX INSERTION FORCE AND .25LB./1KG MIN RETENTION FORCE
PER RETENTIVE PIN USING .062/1.57 THICK CIRCUIT BOARD AND RECOMMENDED
HOLE PATTERN. RETENTIVE LOCATION AT THE DISCRETION OF THE MANUFACTURER.
RETENTION IS TWO PINS PER PART ADJACENT TO ONE ANOTHER.
OMIT FROM PRODUCT NUMBER IF THIS FEATURE IS NOT APPLICABLE.
7. UNDER PLATING 50μ"/1.27μm Ni.
- ⑧ FOR POLARIZATION SPECIFY POSITION NUMBER
(e.i., A03=ROW A POS. 3) TO OMIT PIN
IF FEATURE IS NOT APPLICABLE, REMOVE FROM PRODUCT NUMBER.
- ⑨ ADD "LF" SUFFIX AT THE END OF PART NUMBER FOR LEAD FREE OPTION.
10. THE HOUSING WILL WITHSTAND EXPOSURE TO 260°C PEAK TEMPERATURE
FOR 15 SECONDS IN A WAVE SOLDER APPLICATION WITH A 1.5mm
MINIMUM THICK CIRCUIT BOARD. SEE APPLICATION NOTES/PROCEDURES
IF THEY ARE AVAILABLE.
- ⑪ IF "LF" P/N THE PRODUCT MEETS EUROPEAN UNION DIRECTIVES AND OTHER
COUNTRY REGULATION AS DESCRIBED IN GS-22-008.
- ⑫ PLATING OPTIONS:
MAY BE EITHER GOLD OR GXT PLATED AT MANUFACTURER'S OPTION.

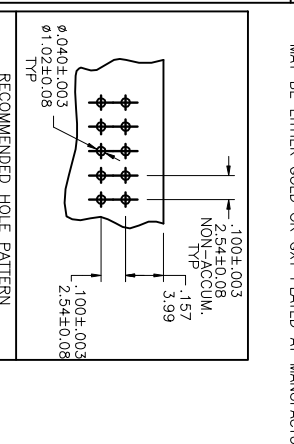


mat'l. code		surface		tolerance		projection		product family	
NOTES 1 & 2		ISO 1302		ISO 406		ISO 1101		HEADER	
lir	ecn no	dr	date	tolerances unless otherwise specified		INCH/MM		title	
A	V92814	DAI	8/24/99	linear	.XX±.01/XX±0.3	scale 1:1		.100/2.54cc GUIDE PIN (SLOTTED)	
B	V11526	DAI	5/21/01	linear	.XXX±.005/XXX±0.13			SHROUDED VERTICAL HEADER	
C	V212895	TAB	1/09/03	0°±2'	.XXXX±.0020/XXXX±0.05			dwg no	
D	M05-0089	MHT	5/20/05	dr	D. INGRAM	6/02/99		sheet 1 of 1 size	
E	M07-0116	AGS	2/19/07	engr	H. SUNDY	7/21/99		64991	
F	M09-0059	MHT	4/16/09	chr	H. SUNDY	7/21/99		A3	
G	M09-0154	MHT	9/10/09	appd	H. SUNDY	7/21/99		type Product Customer Drawing	
sheet	revision	G							
index	sheet	1							



PRODUCT NUMBER
 6 4 9 9 2 - X X X X - X X X X X L F
 LEAD FREE OPTION
 NOTE 12
 S = 15u"/10.39um[GOLD/GXT ON CONTACT AREA
 100u"/12.54um]PURE TIN ON TAIL
 G = 30u"/10.76um[GOLD/GXT ON CONTACT AREA
 100u"/12.54um]PURE TIN ON TAIL
 TAIL LENGTH 5 = .125/3.18 POS. POS.
 POLARIZATION NOTE 8
 RETENTION LEG NOTE 6
 R = RETENTION LEG

- NOTES:**
- 1 HOUSING MAT'L: HIGH TEMPERATURE THERMOPLASTIC. UL94V-0
 - 2 COLOR: BLACK
 - 3 PIN MATERIAL: PHOSPHOR-BRONZE
 - 4 TO DETERMINE DIMENSIONS:
 N = NUMBER OF POSITIONS PER ROW
 EXAMPLE: 13 POS., (N-1)X.100/2.54=1.200/30.48
 - 5 3LBS./1.36 KG MIN. RETENTION IN EITHER DIRECTION.
 - 6 PACKAGED IN TRAYS.
 - 7 RETENTION LEG:
 .5LB/2.3KG MAX. INSERTION FORCE AND .25LB/.1KG MIN. RETENTION FORCE PER RETENING PIN USING .062/.157 THICK CIRCUIT BOARD AND RECOMMENDED HOLE PATTERN. RETENTIVE LOCATION AT THE DISCRETION OF THE MANUFACTURER. RETENTION IS TWO PINS PER PART ADJACENT TO ONE ANOTHER.
 IF FEATURE IS NOT APPLICABLE, REMOVE FROM PRODUCT NUMBER.
 - 8 UNDER PLATING: .050u"/1.2um Ni.
 - 9 FOR POLARIZATION SPECIFY POSITION NUMBER (i.e. A03=ROW A POS. 3) TO OMIT PIN.
 IF FEATURE IS NOT APPLICABLE, REMOVE FROM PRODUCT NUMBER.
 - 10 ADD "L" SUFFIX AT THE END OF PART NUMBER FOR LEAD FREE OPTION.
 - 10 THE HOUSING WILL WITHSTAND EXPOSURE TO 260°C PEAK TEMPERATURE FOR 15 SECONDS IN A WAVE SOLDER APPLICATION WITH A 1.5mm MINIMUM THICK CIRCUIT BOARD. SEE APPLICATION NOTES/PROCEDURES IF THEY ARE AVAILABLE.
 - 11 THIS PRODUCT MEETS EUROPEAN UNION DIRECTIVES AND OTHER COUNTRY REGULATION AS DESCRIBED IN GS-22-008.
 - 12 PLATING OPTIONS:
 MAY BE EITHER GOLD OR GXT PLATED AT MANUFACTURER'S OPTION.



Rev	1	2	3	4	5	6
Date	9/10/09					
By	H. SUNDY					
Check	H. SUNDY					
Appr						
Desc						
Proj						
Part						
Rev						

Mat'l. code	part no	date	surface	tolerance	projection	product family
ISO 1902	ISO 406	ISO 1101	ISO 1101	ISO 1101	ISO 1101	ISO 1101
C 405-0224	MHT	10/26/09	silver	MIL-D-1453	100/2.54mm	GUIDE PIN
D 407-0116	ACS	2/19/07	linear	MIL-D-1453	SHROUDED R/A	HEADER
E 407-0246	MHT	5/30/07	0±.2	MIL-D-1453	SCALE 1:1	
F 409-0099	MHT	4/16/09	de	Q. INGRAM	6/23/99	
G 409-0099	MHT	7/08/09	de	H. SUNDY	7/12/99	
H 409-0136	MHT	9/03/09	de	H. SUNDY	7/12/99	
J 409-0154	MHT	9/10/09	de	H. SUNDY	7/12/99	
Rev	J					
Index	Sheet	1				

DWG NO	64992
sheet	1 of 1
Size	A3
Product	Customer Drawing