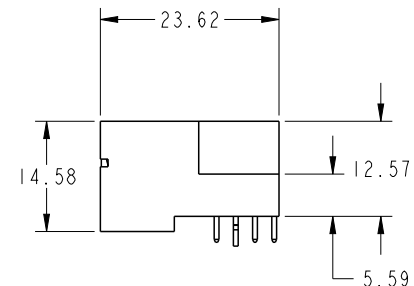
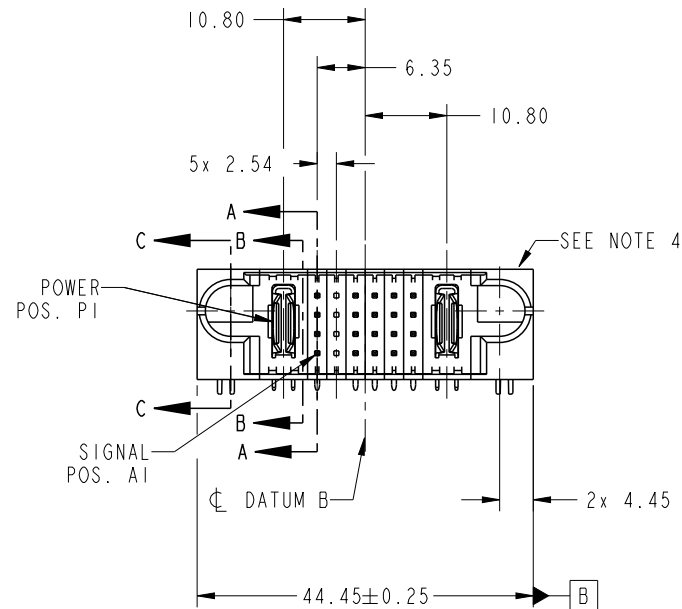


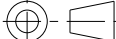
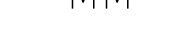




Copyright FCI.

PRODUCT NO.	ROWS	POWER		SIGNAL						POWER	
		E1	P1	1	2	3	4	5	6	P2	E2
51730-206-- NOTE 3	DCBA		PA	H	X	H	H	H	H	PA	
				G	X	G	G	G	G		
				F	X	F	F	F	F		
				E	X	E	E	E	E		



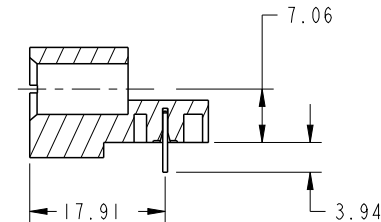
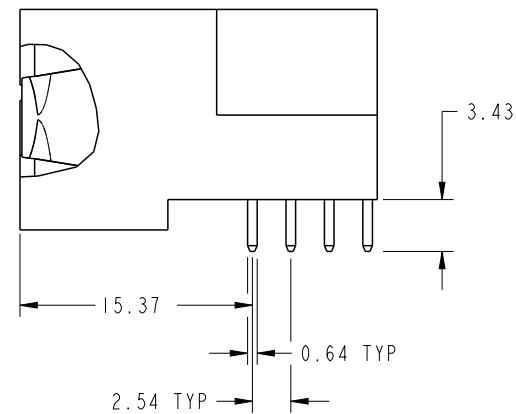
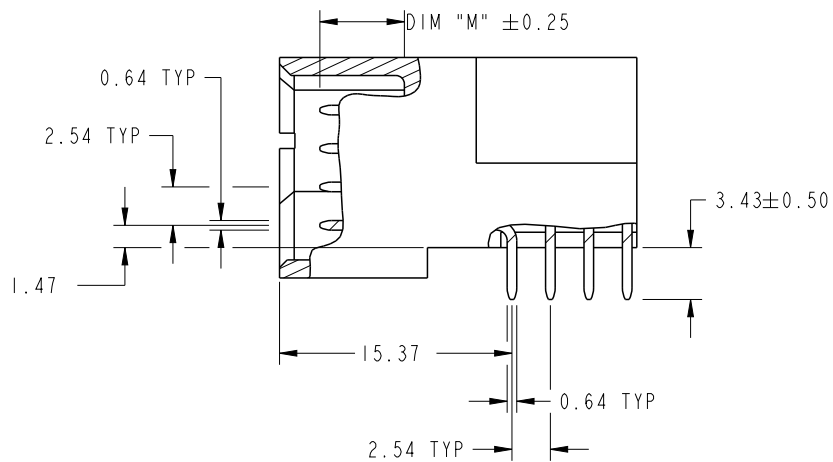
CODE	DIM "M" MATING LENGTH	CONTACT TYPE
H	[5.59]	SIGNAL
G	[5.59]	SIGNAL
F	[5.59]	SIGNAL
E	[5.59]	SIGNAL
R	[6.86]	SIGNAL
PA	[N/A]	POWER
HA	[N/A]	HOLD-DOWN
X	[N/A]	OMITTED

spec ref *		dr Ruan MT 2013/04/18				size A4	scale 1:1	
tolerance std ASME Y14.5	TOLERANCES UNLESS OTHERWISE SPECIFIED		eng Ruan MT 2013/05/20			ecn no -		
			chr - -			rel level Released		
			appr Pei-Ming Zheng 2013/05/20			product family PwrBlade		
surface 	linear	0.X	±0.5		title IP + 24S + IP RIGHT ANGLE SOLDER HEADER	dwg no 51730-206	rev A	
		0.XX	±0.25					
		0.XXX	±0.1					
ASME Y14.5	angular	0°	±2°	www.fci.com	cat. no. -	Product - Customer Drw	sheet 1 of 4	

PrintE File - REV C - 2009-06-09

PRODUCT NUMBER

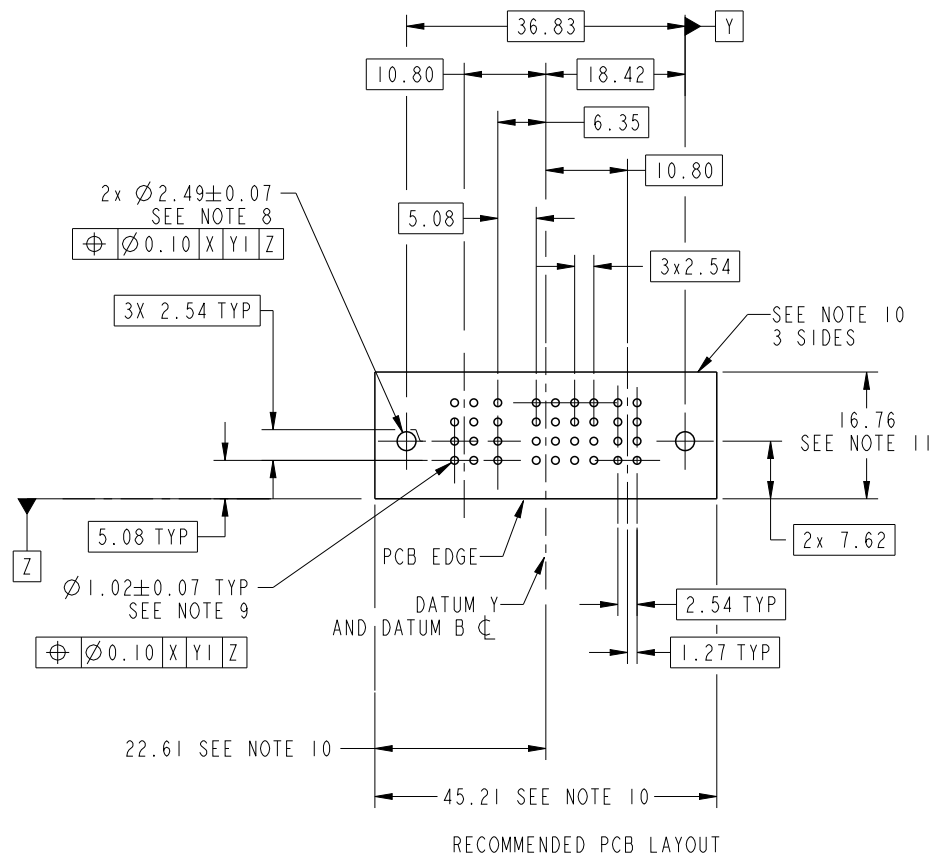
51730-206--
NOTE: 3



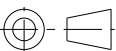


dr	Ruan MT	2013/04/18	projection	MM	size	A4	scale	1:1
eng	Ruan MT	2013/05/20			ecn no	-		
chr	-	-			rel level	Released		
appr	Pei-Ming Zheng	2013/05/20	product family	PwrBlade				
	title	IP + 24S + IP			dwg no	51730-206		
		RIGHT ANGLE SOLDER HEADER					rev	A
www.fci.com	cat. no.	-	Product - Customer Drw				sheet 2 of 4	

PRODUCT NUMBER

51730-206--
NOTE: 3



RECOMMENDED PCB LAYOUT

dr	Ruan MT	2013/04/18	<div>projection</div> <div></div>	<div>MM</div> <div></div>	size	A4	scale	1:1
eng	Ruan MT	2013/05/20			ecn no -			
chr	-	-						
appr	Pei-Ming Zheng	2013/05/20	product family		PwrBlade	rel level	Released	
	title IP + 24S + IP RIGHT ANGLE SOLDER HEADER				dwg no 51730-206	rev A		
www.fci.com	cat. no. -		Product - Customer Drw			sheet 3 of 4		



Copyright FCI.

PRODUCT NUMBER
51730-206--
NOTE: 3

NOTES:

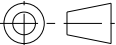


1. DIMENSIONS AND TOLERANCES ARE IN ACCORDANCE WITH
ASME Y14.5M, 1994 UNLESS OTHERWISE SPECIFIED.

CONNECTOR NOTES:

- 2. HOUSING MATERIAL: UL 94 V-0 GLASS FILLED HIGH-TEMP THERMOPLASTIC
POWER CONTACT MATERIAL: COPPER ALLOY
SIGNAL PIN MATERIAL: COPPER ALLOY
- 3. SEE ITEM 1 & 2 IN PRINT 10064183 FOR PLATING SPEC OF 51730-206 AND 51730-206LF RESPECTIVELY.
- 4. MANUFACTURER'S NAME, DATE CODE AND OPTIONAL P/N TO APPEAR ON
THIS SURFACE. THE MARK CAN BE OMITTED IF THERE IS NOT ENOUGH
SPACE ON THIS SURFACE.
- 5. PRODUCT SPECIFICATION GS-12-149.
APPLICATION SPECIFICATION BUS-20-067.
- 6. PACKAGED IN TRAYS.

PCB NOTES:

- 7. ALL HOLE DIAMETERS ARE FINISHED HOLE SIZE.
- 8. MOUNTING HOLES, WHERE APPLICABLE, ARE UNPLATED.
- 9. $\varnothing 1.151 \pm 0.025$ DRILLED HOLES PLATED WITH
0.008 MIN SnPb OR Sn OVER 0.03
TO 0.08 Cu PLATING TO ACHIEVE
 $\varnothing 1.02 \pm 0.07$ HOLE.
- 10. CONNECTOR KEEP-OUT ZONE.

dr	Ruan MT	2013/04/18	<div>projection</div> 	<div>MM</div> 	size	A4	scale	1:1			
eng	Ruan MT	2013/05/20			ecn no				-		
chr	-	-									
appr	Pei-Ming Zheng	2013/05/20	product family		PwrBlade	rel level		Released			
		title			IP + 24S + IP			dwg no	51730-206	rev	A
					RIGHT ANGLE SOLDER HEADER						
www.fci.com		cat. no.		-		Product - Customer Drw			sheet 4 of 4		