

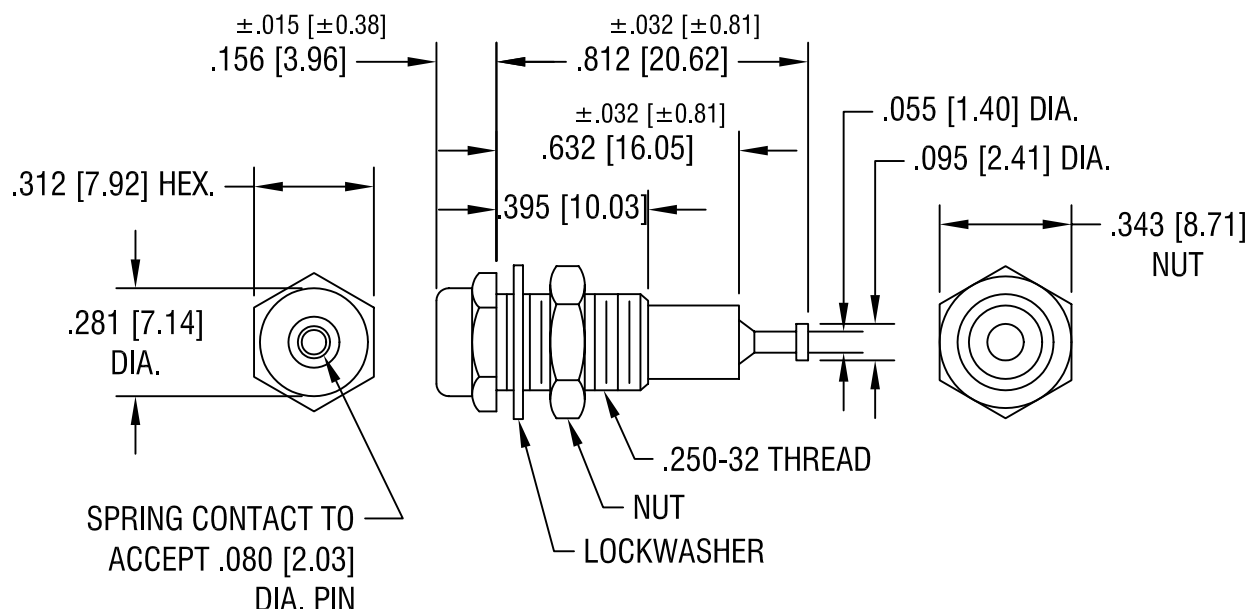
RATINGS:

CURRENT: 10 AMPS

BREAKDOWN VOLTAGE: 5700 V RMS

CONTACT RESISTANCE: 0.004 OHMS MAX.

CONTACT-TO-PANEL C: 2 pF NOMINAL



NOTES:

1. CONTACT:

MAT'L - BRASS BODY WITH WRAP
AROUND BERYLLIUM COPPER
GOLD PLATE

BODY:

MAT'L - NYLON 6/6 PER ASTM D4066

2. SHELL, NUT/WASHER:

BRASS, NICKEL PLATE.
HARDWARE SUPPLIED
UNASSEMBLED.

PART NO.	COLOR
6012	WHITE
6013	RED
6014	BLACK
6015	GREEN
6016	YELLOW
6017	BLUE

KEYSTONE ELECTRONICS CORP.

ASTORIA, N.Y. 11105-2017

PART NAME

INSULATED METAL-CLAD TIP JACK

MATERIAL

AS NOTED

FINISH

AS NOTED

DRN BY

BOONE

DATE

12.7.82

APPD

LN

SCALE

2X

TOLERANCES

INCH [MM]

DECIMAL $\pm .005$ [± 0.15]

ANGULAR $\pm 1^\circ$

UNLESS OTHERWISE SPECIFIED

CODE

C/M

DWG NO.

6012-6017

2.5.03 CHANGE AS PER ECN 03-011

A

DATE

DESCRIPTION

REV.

Mouser Electronics

Authorized Distributor

Click to View Pricing, Inventory, Delivery & Lifecycle Information:

[Keystone Electronics:](#)

[6017](#)