

PART NUMBER CODING

SIP110-PP_C-D_-SK-BK

COLOR

BK= BLACK

NUMBER OF POSITIONS

(CONTACTS PER ROW)

PLATING

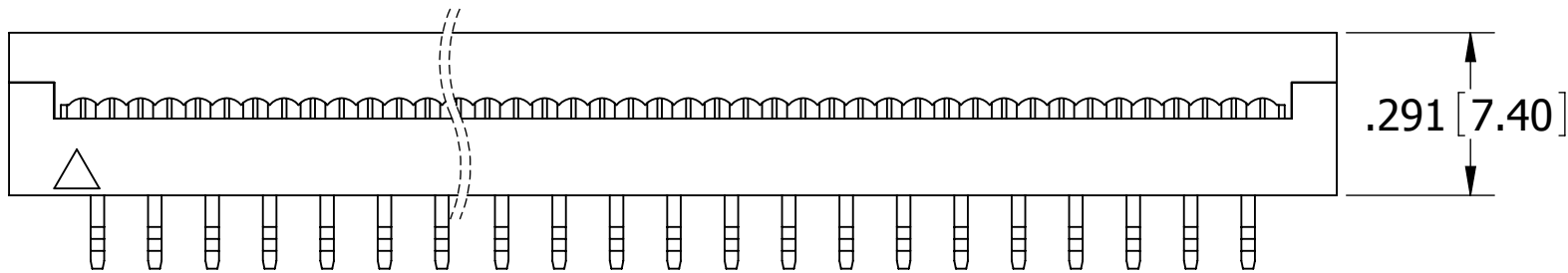
(SEE PLATING TABLE)

PLATING TABLE

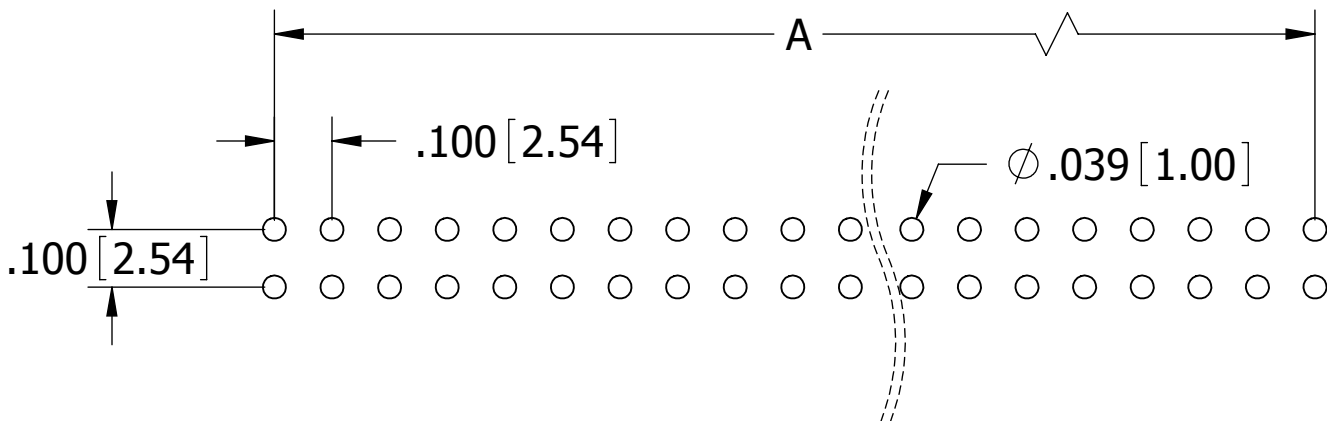
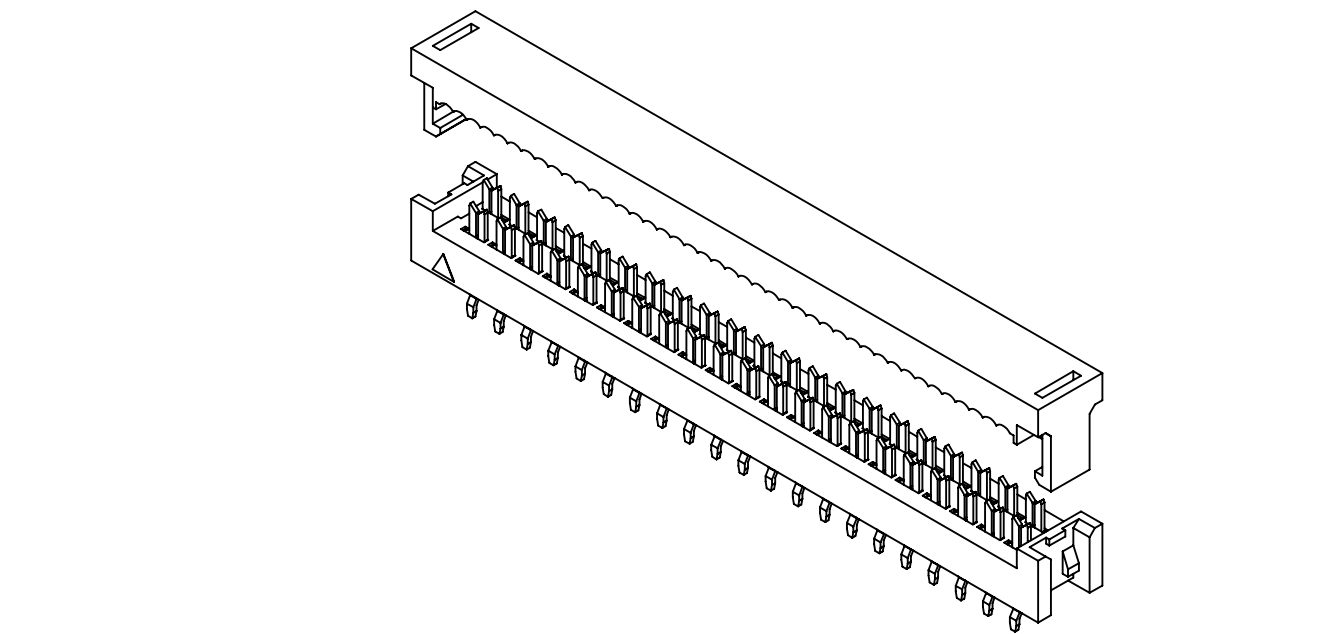
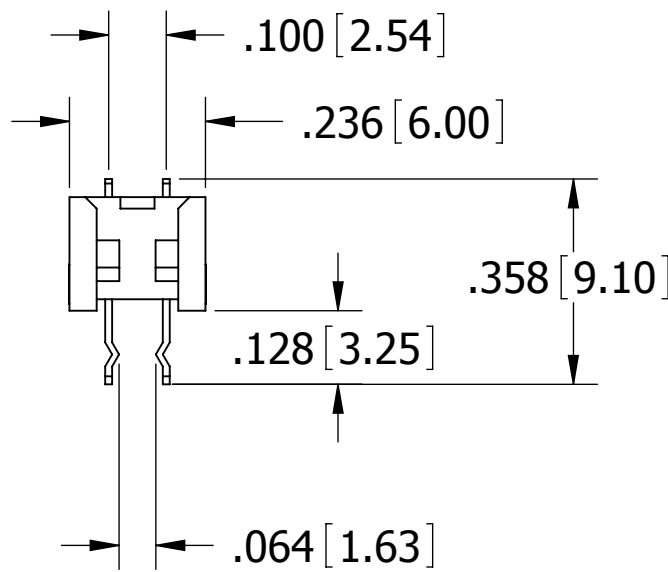
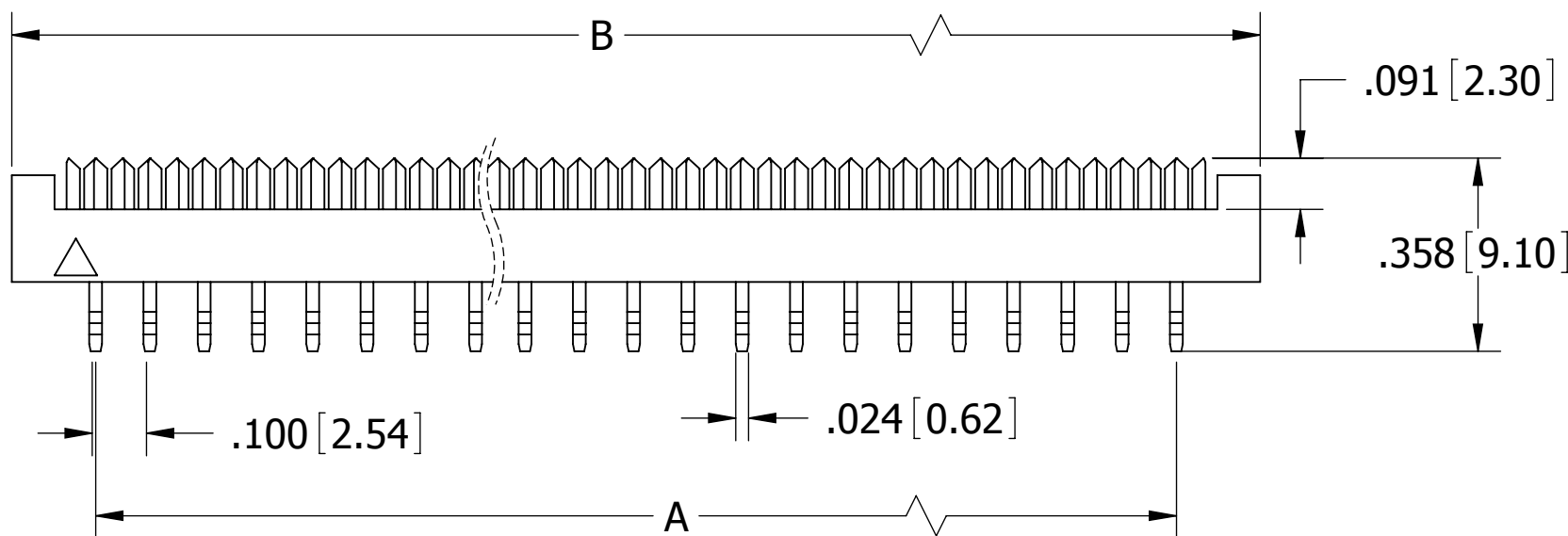
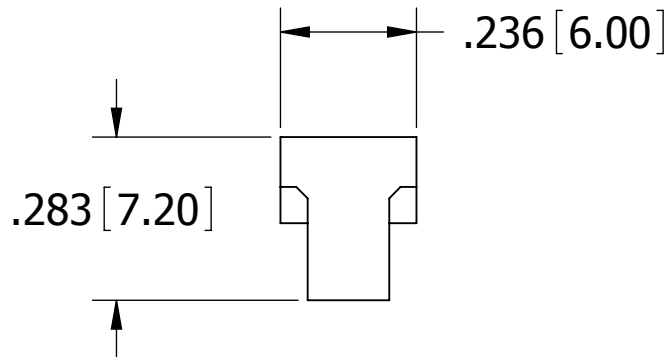
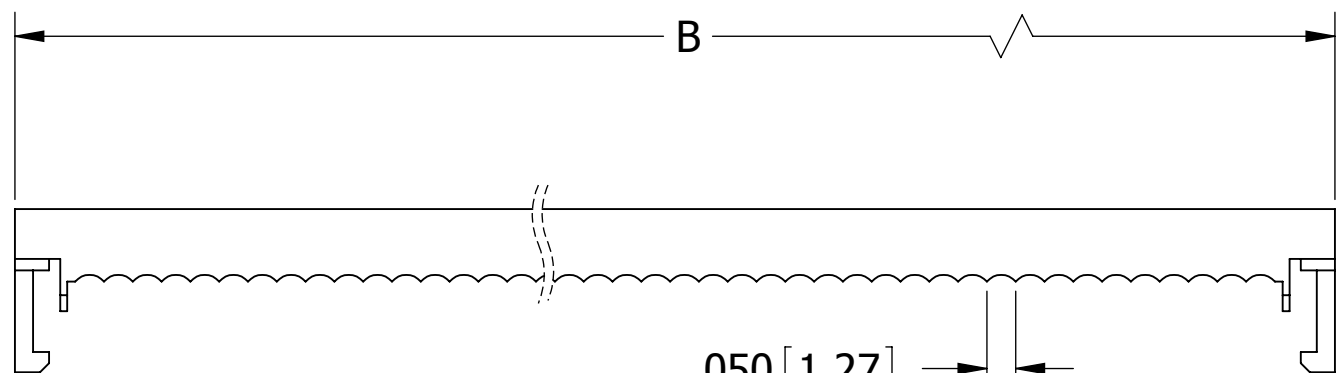
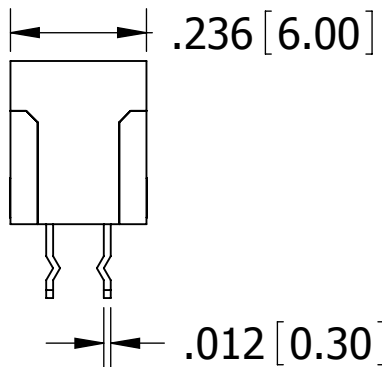
| CONTACT SURFACE | TERMINATION |
|------------------------------|--------------------------|
| P = GOLD FLASH | GOLD FLASH |
| V = GOLD FLASH | NICKEL |
| K = .000015" GOLD | NICKEL |
| J = .000015" GOLD | GOLD FLASH |
| E = .000100" PURE TIN, MATTE | .000100" PURE TIN, MATTE |

REVISIONS

| REV. | ECO. NO | DESCRIPTION | DATE | BY |
|------|---------|-----------------|-----------|----|
| A | 1930 | INITIAL RELEASE | 3/17/2009 | JH |



ASSEMBLED FRONT VIEW

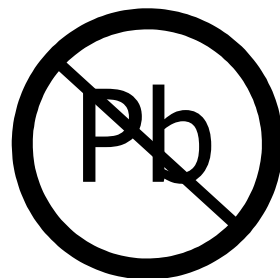


RECOMMENDED PCB LAYOUT

| PART NUMBER | POSITIONS/ CONTACTS | A | | B | |
|-----------------------|------------------------|-------|-------|-------|-------|
| | | INCH | MM | INCH | MM |
| SIP110-PP_C-D03-SK-BK | 03/06 | 0.200 | 5.08 | 0.509 | 12.94 |
| SIP110-PP_C-D04-SK-BK | 04/08 | 0.300 | 7.62 | 0.609 | 15.48 |
| SIP110-PP_C-D05-SK-BK | 05/10 | 0.400 | 10.16 | 0.713 | 18.10 |
| SIP110-PP_C-D06-SK-BK | 06/12 | 0.500 | 12.70 | 0.807 | 20.51 |
| SIP110-PP_C-D07-SK-BK | 07/14 | 0.600 | 15.24 | 0.907 | 23.05 |
| SIP110-PP_C-D08-SK-BK | 08/16 | 0.700 | 17.78 | 1.009 | 25.64 |
| SIP110-PP_C-D09-SK-BK | 09/18 | 0.800 | 20.32 | 1.108 | 28.15 |
| SIP110-PP_C-D10-SK-BK | 10/20 | 0.900 | 22.86 | 1.212 | 30.78 |
| SIP110-PP_C-D12-SK-BK | 12/24 | 1.100 | 27.94 | 1.412 | 35.86 |
| SIP110-PP_C-D13-SK-BK | 13/26 | 1.200 | 30.48 | 1.512 | 38.40 |
| SIP110-PP_C-D14-SK-BK | 14/28 | 1.300 | 33.02 | 1.598 | 40.60 |
| SIP110-PP_C-D15-SK-BK | 15/30 | 1.400 | 35.56 | 1.713 | 43.50 |
| SIP110-PP_C-D17-SK-BK | 17/34 | 1.600 | 40.64 | 1.913 | 48.58 |
| SIP110-PP_C-D20-SK-BK | 20/40 | 1.900 | 48.26 | 2.213 | 56.20 |
| SIP110-PP_C-D25-SK-BK | 25/50 | 2.400 | 60.96 | 2.717 | 69.00 |
| SIP110-PP_C-D30-SK-BK | 30/60 | 2.900 | 73.66 | 3.219 | 81.75 |
| SIP110-PP_C-D32-SK-BK | 32/64 | 3.100 | 78.74 | 3.419 | 86.83 |

NOTES:

1. INSULATOR MATERIAL: PBT 30% GLASS FIBER.
2. CONTACT MATERIAL: PHOSPHOR BRONZE.
3. OPERATING TEMPERATURE: -40°C TO +105°C.
4. UL FLAMMABILITY RATING: 94V-0.
5. CURRENT RATING: 1 AMP.
6. INSULATION RESISTANCE: 5,000M OHMS MIN.
7. DIELECTRIC WITHSTANDING: 1,000 VAC.
8. FOR 1.27mm PITCH FLAT RIBBON CABLE.



RoHS COMPLIANT

UNLESS OTHERWISE SPECIFIED:

DIMENSIONS ARE IN INCHES[MM]

TOLERANCES:

ANGULAR: ± 30°

.XX = ± .01 [.3]

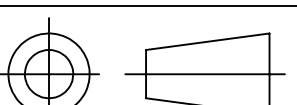
.XXX = ± .008 [.20]

.XXXX = ± .0040 [.100]

SURFACE FINISH: 63 Ra
REMOVE ALL BURRS AND SHARP EDGES .010 MAX
INTERPRET DIMENSIONS AND GEOMETRIC
TOLERANCING
PER: ANSI Y14.5M-1994

DRAWN 4/7/2009 JH

THE INFORMATION HEREIN CONTAINS
PROPRIETARY INFORMATION OF
SULLINS ELECTRONICS AND IS NOT
TO BE REPRODUCED, USED OR
DISCLOSED TO OTHERS FOR ANY
PURPOSE EXCEPT AS SPECIFICALLY
AUTHORIZED IN WRITING BY AN
OFFICER OF SULLINS ELECTRONICS.



| SULLINS CONNECTOR SOLUTIONS | |
|--|-------------------|
| DESCRIPTION IDC DIP PLUG, .100" CC/RS | |
| PART NUMBER SIP110-PP_C-D_-SK-BK | |
| SIZE C | DWG. NO. 11228 |
| SCALE: NTS | REV A |