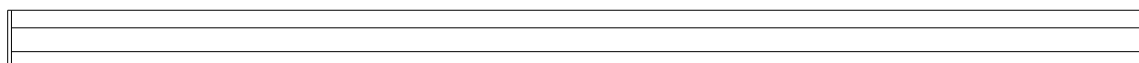
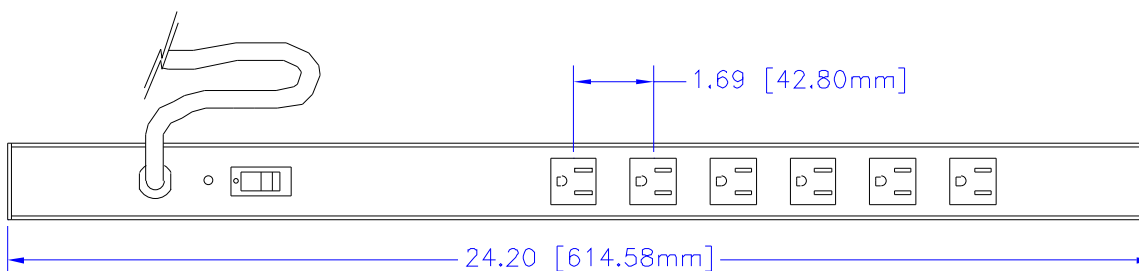


NOTES

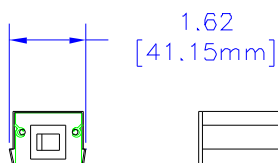
DESIGNED FOR POWER DISTRIBUTION FOR EQUIPMENT RACKS – ALSO
HANDY FOR WORK STATIONS.
RUGGED EXTRUDED ALUMINUM CASE.
HEAVY-DUTY CORD – 14/3 SJTW WIRE FOR EXTREME TEMPERATURE
RANGES.
INTEGRAL MOLDED PLUG AVAILABLE IN STRAIGHT-BLADE (NEMA 5-15P) OR
TWIST-LOCK (NEMA L5-15P) CONFIGURATIONS.
COMES WITH ON/OFF SWITCH.
INCLUDES 15A, OR 20A 125VAC CIRCUIT BREAKER TO PREVENT ACCIDENTAL
LINE OVERLOAD.
INCLUDES HARDWARE FOR RACK MOUNTING TO AMHAL STRUTS.
CSA CERTIFIED, UL LISTED.



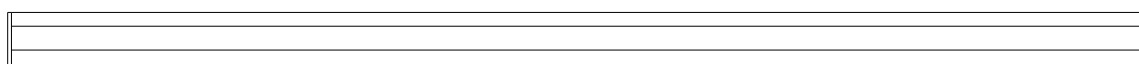
SIDE VIEW



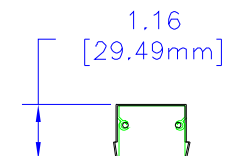
TOP VIEW



L. END VIEW



SIDE VIEW



R. END VIEW



BOTTOM VIEW

*SEE CATALOG FOR THE COMPLETE PART
NUMBER BASED ON THE OPTIONS LISTED
IN THE NOTE SECTION

UNLESS OTHERWISE SPECIFIED
DIMENSIONS ARE IN INCHES
X +/- .1
XX +/- .05
XXX +/- .015
CUTS +/- .005
ANGLES +/- .5 DEG
NOTICE
HAMMOND CLAIMS PROPRIETARY RIGHTS TO
THE MATERIAL IN THIS DRAWING. IT IS
INTENDED TO BE USED AS A REFERENCE FOR
ENGINEERING INFORMATION ONLY. THIS
INFORMATION MAY NOT BE USED TO
MANUFACTURE PRODUCT WITHOUT WRITTEN
PERMISSION FROM HAMMOND MANUFACTURING.



**HAMMOND
MANUFACTURING**

WEB: WWW.HAMMONDMFG.COM

TITLE HAMMOND INDUSTRIAL GRADE POWER STRIPS	
DRAWN BY MJM	DATE 02/09/01
SCALE	PAGE 1 OF 1
PART NUMBER 15852H6****	

Mouser Electronics

Authorized Distributor

Click to View Pricing, Inventory, Delivery & Lifecycle Information:

[Hammond:](#)

[15852H6D1](#) [15852H6B1](#) [15852H6C1](#) [15852H6A1](#)