

DIN-MODULAR CASES TYPE B

Order data on pages 174-175

OKW
GEHÄUSE
SYSTEME



MOUNTING OF PCBs FROM THE FRONT & ABOVE



THE PRODUCT

The DIN-MODULAR CASE TYPE B is available in three different designs for mounting control panels complying with DIN IEC 61554.

DESIGNS

Design 1
For horizontal slide-in mounting of PCBs from the front. Closed cases with removable front frame and rear panel.

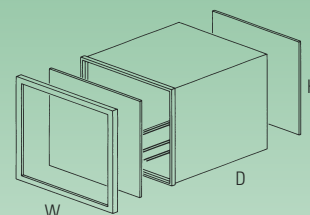
Design 2
Versions with separate lids allow vertical and horizontal slide-in PCB assembly.

Design 3
A special version like a compact 19" subrack rounds off the comprehensive range.

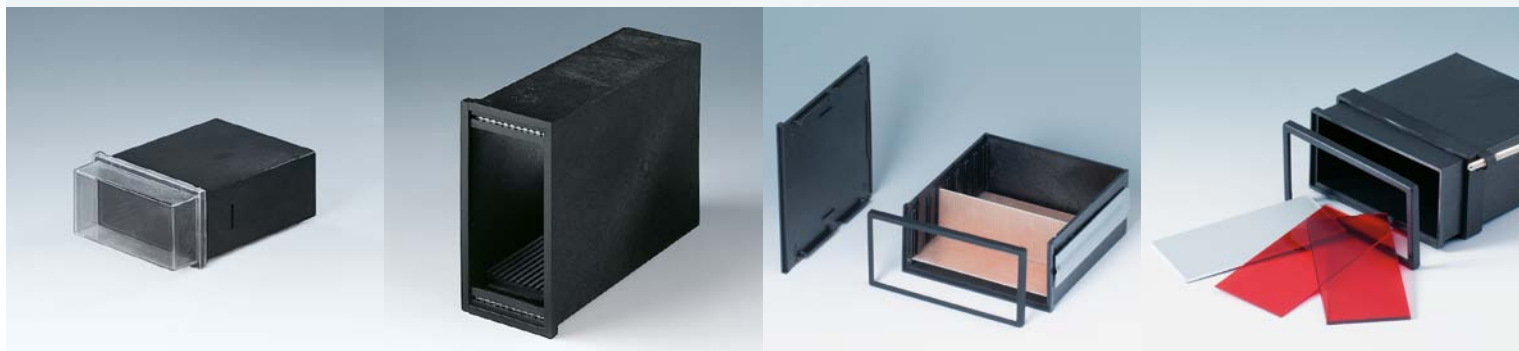
Protection class < IP 40

Norm dimensions design 1

96 x 48 mm 72 x 72 mm 96 x 96 mm



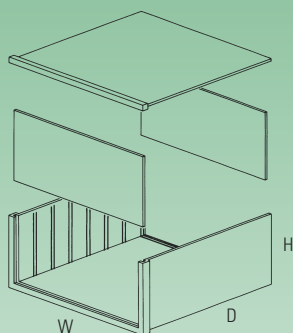
detailed drawings see our website
www.okw.com



MULTIPLE APPLICATIONS

Norm dimensions design 2

144 x 72 mm 144 x 144 mm



Norm dimension design 3

72 x 144 (same as design 2, but particularly designed for 19"-system slide-in assemblies 12 TE, 3 HE)

YOUR ADVANTAGE

Case made of glass-fibre reinforced Noryl with outstanding mechanical and electrical properties, corresponding to UL-standard 94 V-1.

Available in 3 different designs, depending on the inserts.

All components including the electronic parts can slide into the case from the front side resp. from above, dependent of the case design.

The rear panel has fixing ribs to hold PCBs and slots for the plug connectors.

YOUR ADVANTAGE

Holder or bracket for secure mounting within the control panel.

Transparent snap-in cover (accessory) protects displays and operating elements (96 x 48 – 144 x 72).

APPLICATIONS

Case system for a multiple applications. Especially suitable for measuring, control technology and remote controls.





DIN-MODULAR CASES TYPE B

DIN-MODULAR CASE TYPE B acc. to DIN IEC 61554		Outside dim. in mm			Design*1	Version rear panel	front panel	attachment with	Material (UL 94 V-1)	Part-No. black
W	H	D								
	96 x 48	96	48	109	1	no slots	removable	holding frame (acc.)	Noryl reinforced	A 98 42 401
		96	48	109	1	no slots	removable	holder (accessory)	Noryl reinforced	A 98 42 402
		96	48	109	1	1 slot	removable	holding frame (acc.)	Noryl reinforced	A 98 42 411
		96	48	109	1	1 slot	removable	holder (accessory)	Noryl reinforced	A 98 42 412
		96	48	109	1	2 slots	removable	holding frame (acc.)	Noryl reinforced	A 98 42 421
		96	48	109	1	2 slots	removable	holder (accessory)	Noryl reinforced	A 98 42 422
		96	48	150	1	no slots	removable	holding frame (acc.)	Noryl reinforced	A 98 42 501
		96	48	150	1	no slots	removable	holder (accessory)	Noryl reinforced	A 98 42 502
		96	48	150	1	1 slot	removable	holding frame (acc.)	Noryl reinforced	A 98 42 511
		96	48	150	1	1 slot	removable	holder (accessory)	Noryl reinforced	A 98 42 512
		96	48	150	1	2 slots	removable	holding frame (acc.)	Noryl reinforced	A 98 42 521
		96	48	150	1	2 slots	removable	holder (accessory)	Noryl reinforced	A 98 42 522
	72 x 72	72	72	110	1	no slots	removable	holder (accessory)	Noryl reinforced	A 98 33 401
		72	72	110	1	1 slot	removable	holder (accessory)	Noryl reinforced	A 98 33 411
		72	72	110	1	2 slots	removable	holder (accessory)	Noryl reinforced	A 98 33 421
		72	72	150	1	no slots	removable	holder (accessory)	Noryl reinforced	A 98 33 501
	96 x 96	96	96	51	1	no slots	removable	holder (accessory)	Noryl reinforced	A 98 44 101
		96	96	51	1	1 slot	removable	holder (accessory)	Noryl reinforced	A 98 44 111
		96	96	51	1	2 slots	removable	holder (accessory)	Noryl reinforced	A 98 44 121
		96	96	51	1	4 slots	removable	holder (accessory)	Noryl reinforced	A 98 44 141
		96	96	100	1	no slots	removable	holder (accessory)	Noryl reinforced	A 98 44 401
		96	96	100	1	1 slot	removable	holder (accessory)	Noryl reinforced	A 98 44 411
		96	96	100	1	2 slots	removable	holder (accessory)	Noryl reinforced	A 98 44 421
		96	96	100	1	4 slots	removable	holder (accessory)	Noryl reinforced	A 98 44 441
		96	96	151	1	no slots	removable	holder (accessory)	Noryl reinforced	A 98 44 501
		96	96	151	1	1 slot	removable	holder (accessory)	Noryl reinforced	A 98 44 511
		96	96	151	1	4 slots	removable	holder (accessory)	Noryl reinforced	A 98 44 541
	144 x 72	144	72	94	2	no slots	removable	holder (accessory)	Noryl reinforced	A 98 35 301
		144	72	96	2	no slots	fixed	holder (accessory)	Noryl reinforced	A 98 35 302
		144	72	148	2	no slots	removable	holder (accessory)	Noryl reinforced	A 98 35 501
		144	72	150	2	no slots	fixed	holder (accessory)	Noryl reinforced	A 98 35 502
		144	72	199	2	no slots	removable	holder (accessory)	Noryl reinforced	A 98 35 601
		144	72	200.5	2	no slots	fixed	holder (accessory)	Noryl reinforced	A 98 35 602
		144	72	246	2	no slots	removable	holder (accessory)	Noryl reinforced	A 98 35 701
		144	72	248.5	2	no slots	fixed	holder (accessory)	Noryl reinforced	A 98 35 702
	144 x 144	144	144	93	2	no slots	fixed	holder (accessory)	Noryl reinforced	A 98 55 302
		144	144	152	2	no slots	fixed	holder (accessory)	Noryl reinforced	A 98 55 502
		144	144	201	2	no slots	fixed	holder (accessory)	Noryl reinforced	A 98 55 602
		144	144	248	2	no slots	fixed	holder (accessory)	Noryl reinforced	A 98 55 702
	19" (12 TE)	72	144	200	3	no slots	fixed	holder (accessory)	Noryl reinforced	A 98 35 609
		72	144	248	3	no slots	fixed	holder (accessory)	Noryl reinforced	A 98 35 709

Case type B Guides ridges on ... (for slide-in mounting – horizontal from the front or vertical from above)

96 x 48	2 sides, 2 guides each
72 x 72	2 sides, 2 guides each
96 x 96	2 sides, 4 guides each
144 x 72	2 sides, 1 guide horizontally, various guides vertically with interruption for horizontal slide-in mounting
144 x 144	2 sides, 1 guide horizontally, various guides vertically with interruption for horizontal slide-in mounting

*1 for description of the designs see pages 86/87

design 3 cases are supplied fully assembled (1 case U-section, 1 lid with screws, 1 rear panel, 2 PCB supports with in 1 TE steps, 1 plug holder for connectors acc. to DIN 41612 and 2 tapped and threaded strips for fixing the components), control board cutout 68 x 138 mm



DIN-MODULAR CASES TYPE B ACCESSORIES

For DIN-MODULAR CASES TYPE B	Article ①	Front panel matt anod. al, 1 pc	red, 1 mm, 2 pcs	Filter plate red, 3 mm, 1 pc	red, 3 mm, 1 pc
96 x 48	dim. in mm	A 91 84 221 91,3 x 42,4 x 2	A 91 84 213 91,3 x 42,4 x 1	A 91 84 222 91,5 x 42,5 x 2	—
72 x 72	dim. in mm	A 91 83 321 67,8 x 67,8 x 2	A 91 83 313 67,8 x 67,8 x 2	A 91 83 322 67,8 x 67,8 x 2	—
96 x 96	dim. in mm	A 91 84 421 91,3 x 91,3 x 2	A 91 84 413 91,3 x 91,3 x 1	A 91 84 422 91,5 x 91,5 x 2	—
144x 72	dim. in mm	A 91 83 531 137,5 x 65,8 x 3	—	—	A 91 83 532 137,5 x 65,8 x 3
144 x 144	dim. in mm	A 91 85 531 137,5 x 137,5 x 3	—	—	A 91 85 532 137,5 x 137,5 x 3

Article	For DIN-MODULAR CASE TYPE B	Version	Part-No.
② Holding frame	96 x 48 (please pay attention to the relevant version)	plastic, 1 pc incl. screws	A 92 84 202
③ Holder	96 x 48 109 long (please pay att. to the relevant version)	steel, 2 pcs incl. thumb nuts	A 92 83 361
	96 x 48 150 long (please pay att. to the relevant version)	steel, 2 pcs incl. thumb nuts	A 92 84 251
	72 x 72 110 long	steel, 2 pcs incl. thumb nuts	A 92 83 341
	72 x 72 150 long	steel, 2 pcs incl. thumb nuts	A 92 83 351
	96 x 96 51 long	steel, 2 pcs incl. thumb nuts	A 92 84 511
	96 x 96 100 long	steel, 2 pcs incl. thumb nuts	A 92 84 541
	96 x 96 151 long	steel, 2 pcs incl. thumb nuts	A 92 84 551
	144 x 72 94 long	steel, with rib, 2 pcs incl. thumb nuts	A 92 83 531
	144 x 72 148 long	steel, with rib, 2 pcs incl. thumb nuts	A 92 83 551
	144 x 72 199 long	steel, with rib, 2 pcs incl. thumb nuts	A 92 83 561
	144 x 72 246 long	steel, with rib, 2 pcs incl. thumb nuts	A 92 83 571
④ Holder	144 x 72 / 144 x 144 / 19" with fixed front frame	Set with 2 pcs	A 92 80 003
⑤ Snap-in cover	96 x 48	PC transparent (IP 53), 1 pc	A 92 84 204
	72 x 72	PC transparent (IP 53), 1 pc	A 92 83 304
	96 x 96	PC transparent (IP 53), 1 pc	A 92 84 404
	144 x 72 with removal front frame	PC transparent (IP 53), 1 pc	A 92 83 504

