

.100" c.l. Shunts



SH-1 ☐ - ☐ - ☐

Mates with: TSHS, TSHR, TSHC, BSTS, BSTC, TSHCRE, LTSHR, LTSHRE, BSTCM, LTSHCRE, TSHRE, TSHSM, TSHCR

Plating Options

T = 200μ in tin/lead over entire pin

G = 10μ in gold contact area, gold flash on tail

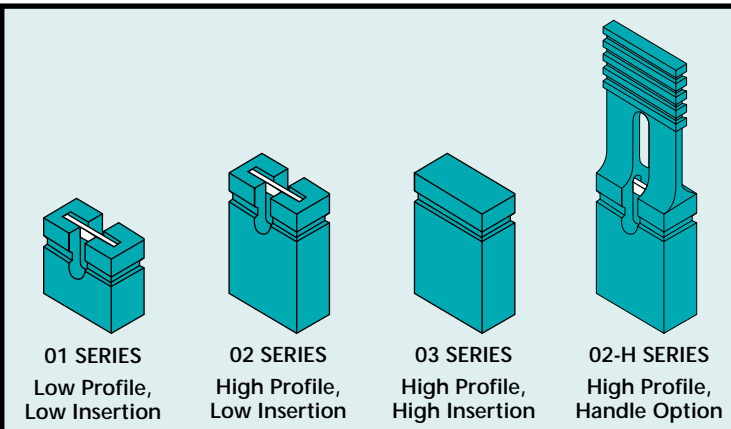
Other plating options available upon request

Shunt Style

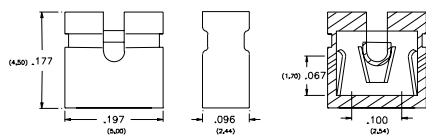
Contact Withdrawl Force	Contact Insertion Force	
4 ounce (NOM)	4 ounce (NOM)	01
4 ounce (NOM)	4 ounce (NOM)	02
5 ounce (NOM)	7 ounce (NOM)	03

Handle Option

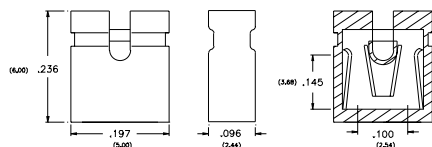
H



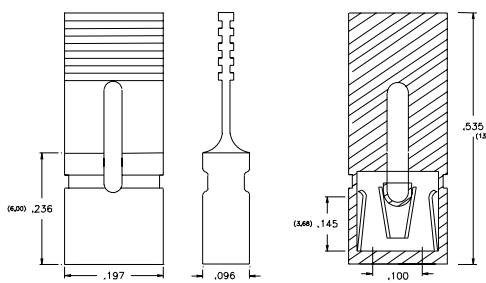
Product cut to specific sizes is noncancellable/nonreturnable.
Parts are subject to change without notice.



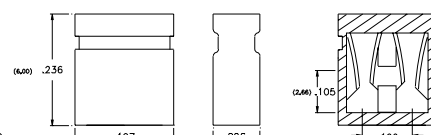
Style -01



Style -02



Style -02 - H



Style -03

Materials & Performance Specifications

	HIGH TEMPERATURE		HIGH TEMPERATURE
Insulator	PBT Thermo Plastic	Temperature Range	-55°C to +125°C
Terminal	Phosphor Bronze	Current Rating	2 amperes
Insulation Resistance	5,000M Ω minimum	Plating	All Plating Options over 50μ in Ni
Flammability	UL 94V-O		

