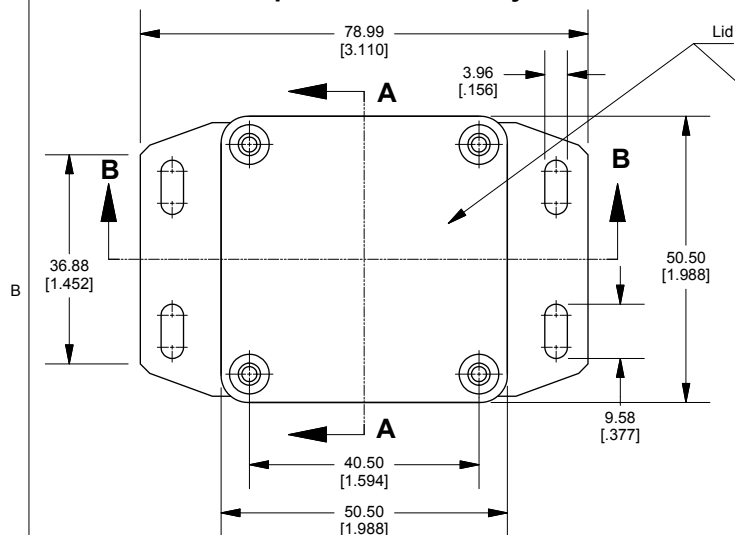
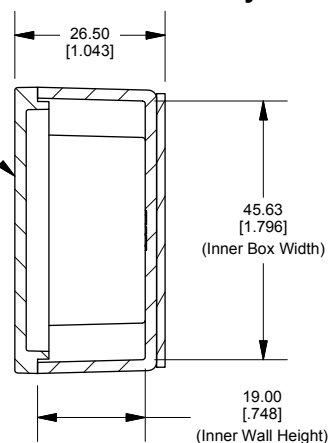


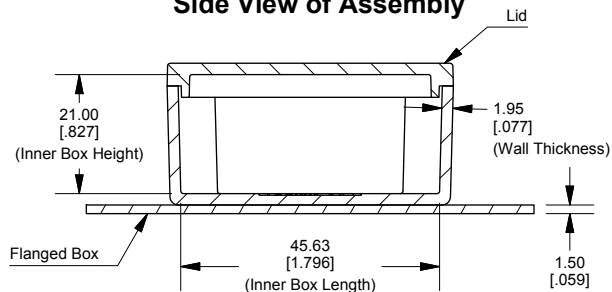
## Top View of Assembly



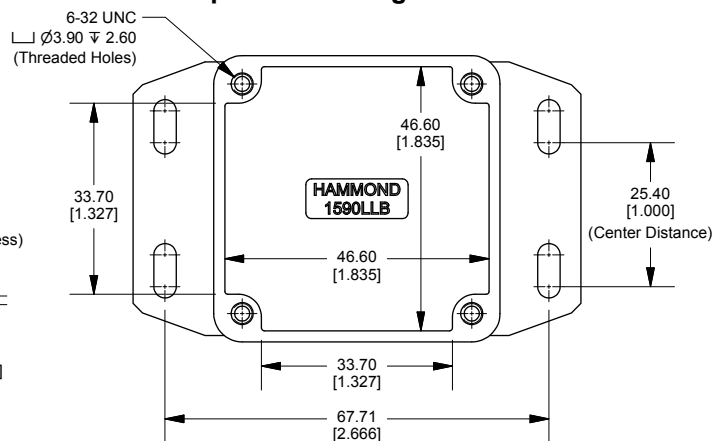
## SECTION A-A End View of Assembly



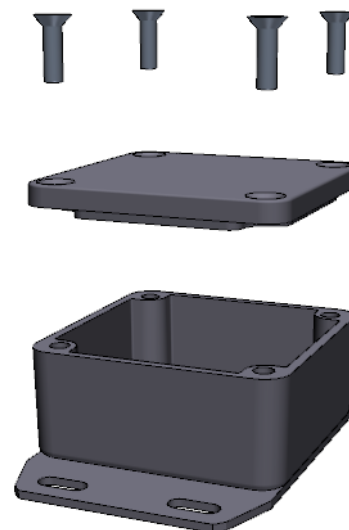
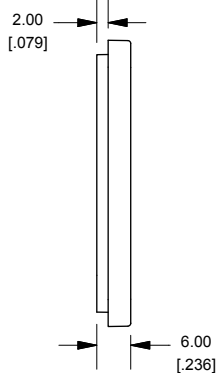
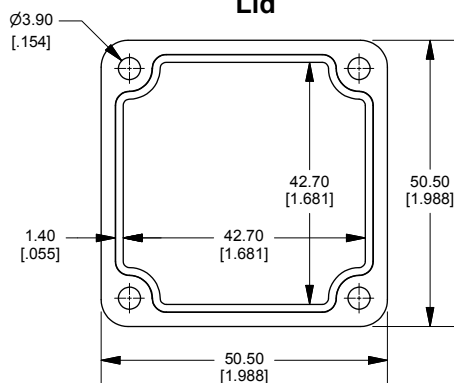
## SECTION B-B Side View of Assembly



## Top View Looking Inside Box



## Lid



Enclosures can be Factory Modified ( Milling, Drilling, Printing etc.)  
Contact Factory [mjm@hammondmfg.com](mailto:mjm@hammondmfg.com) for quotes  
Solid models of this enclosure available in STEP or IGES.

## NOTE

Purchased assembly includes box, lid and 4 cover screws.  
Box and lid are made from Diecast Aluminum Alloy.  
Silicone Gasket supplied with liquid resistant enclosure.  
Bottom Flange is Welded.

## PART NUMBERS

### 1590LLBF Enclosure

Natural Finish Enclosure	1590LLBF
Black Textured Enclosure	1590LLBFBK
1590LLBF Liquid Resistant Enclosure (Silicone Gasket)	
Natural Finish Enclosure	1590WLLBF
Black Textured Enclosure	1590WLLBFBK

## ACCESSORIES

Recommended Torque: 75 ozf.in / 55 cN.m

### Liquid Resistant Cover Screws

Stainless Steel Cover Screws (Pkg 100) [6-32 x 1/2" With O-Ring]	1590WMS100
Black Stainless Steel Cover Screws (Pkg 100) [6-32 x 1/2" With O-Ring]	1590WMS100BK

### Standard Cover Screws

Plated Cover Screws (Pkg 100) [6-32 x 1/2"]	1590MS100
Black Cover Screws (Pkg 100) [6-32 x 1/2"]	1590MS100BK

Dimensions:  
mm  
[inches]

