

Customer Information Sheet

DRAWING No.: M80-522XXXXP

SHEET 2 OF 2

IF IN DOUBT - ASK

(C)

NOT TO SCALE

THIRD ANGLE PROJECTION

ALL DIMENSIONS IN mm

SPECIFICATIONS:**MATERIAL:**MOULDING = GLASS-FILLED PPS,
UL94V-0, BLACK

CONTACT = PHOSPHOR BRONZE

PICK & PLACE CAP = PHOSPHOR BRONZE

FINISH (CONTACTS):

NICKEL ALL OVER CONTACTS

05 = 0.75µ ALL OVER GOLD

22 = 0.75µ GOLD ON CONTACT AREA,
3µ 90/10 TIN/LEAD ON TAILS42 = 0.75µ GOLD ON CONTACT AREA,
3µ 100% TIN ON TAILS**ELECTRICAL:**

CURRENT RATING AT 25°C = 3.0A MAX

CURRENT RATING AT 85°C = 2.2A MAX

WORKING VOLTAGE = 800V AC/DC

VOLTAGE PROOF = 1200V AC/DC

CONTACT RESISTANCE = 25mΩ MAX

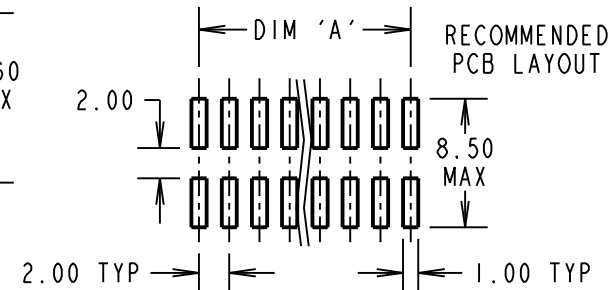
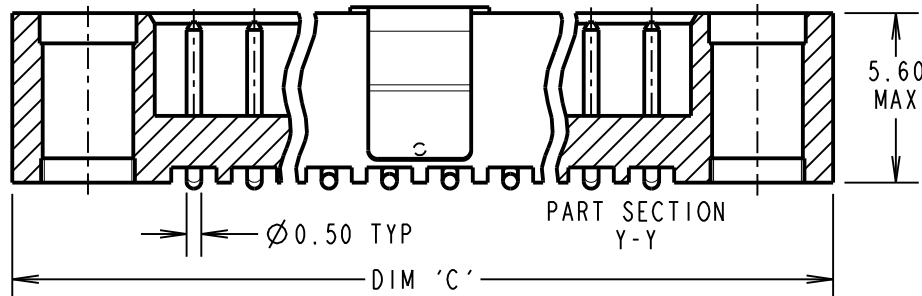
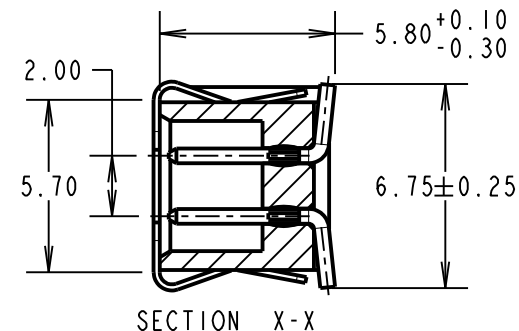
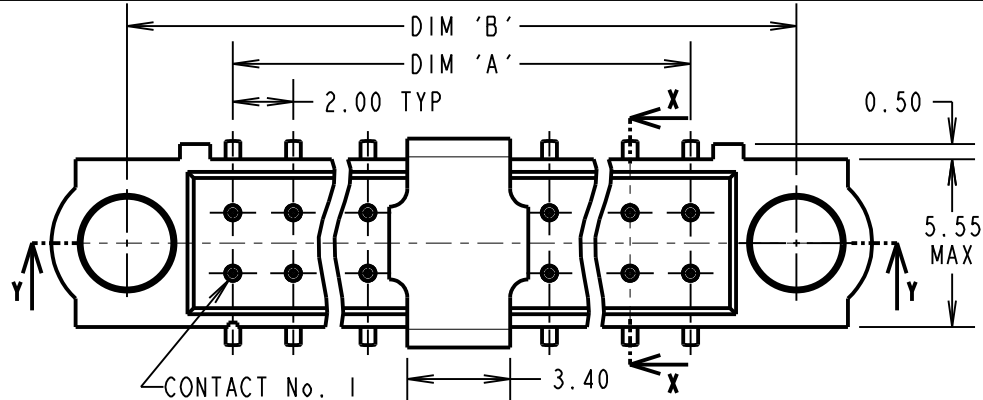
INSULATION RESISTANCE = 100MΩ MIN

MECHANICAL:

DURABILITY = 500 OPERATIONS

ENVIRONMENTAL:

TEMPERATURE RANGE = -55°C TO +125°C

PACKING: TUBEFOR COMPLETE SPECIFICATION, SEE
COMPONENT SPEC. C005XX (LATEST ISSUE)

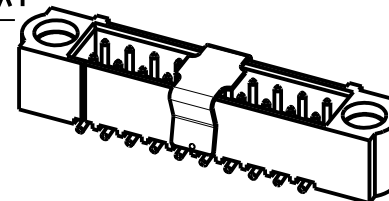
DIMENSION	CALCULATION
DIM 'A'	TOTAL No. OF CONTACTS - 2
DIM 'B'	TOTAL No. OF CONTACTS + 5
DIM 'C'	TOTAL No. OF CONTACTS + 10
EXAMPLE: CONNECTOR WITH 20 CONTACTS, GOLD ON CONTACT AREA AND 100% TIN ON TAIL, M80-5222042P	
DIM 'A' = 18.00mm, DIM 'B' = 30.00mm	

ORDER CODE:**M80-522XXXXP**TOTAL No. OF CONTACTS
04 TO 50
(EVEN NUMBERS ONLY)**FINISH CODE**

05 - ALL OVER GOLD

22 - GOLD ON CONTACT AREA / TIN/LEAD ON TAIL

42 - GOLD ON CONTACT AREA / 100% TIN ON TAIL



MSP	5	04.04.16	13302
NAME	ISS.	DATE	C/NOTE
APPROVED:		M. PERREN	
CHECKED:		M. PLESTED	
DRAWN:		B. M. KENT	
CUSTOMER REF.:			
ASSEMBLY DRG:			

HARWINwww.harwin.com
technical@harwin.comTHIS DRAWING AND ANY
INFORMATION OR DESCRIPTIVE
MATTER SET OUT HEREON ARE
CONFIDENTIAL AND COPYRIGHT
PROPERTY OF THE HARWIN
GROUP AND MUST NOT BE
DISCLOSED, LOANED, COPIED
OR USED FOR MANUFACTURING,
TENDERING OR FOR ANY
OTHER PURPOSE WITHOUT
THEIR WRITTEN PERMISSION.**TOLERANCES**

X. = ±1mm

X.X = ±0.50mm

X.XX = ±0.10mm

X.XXX = ±0.01mm

ANGLES = ±5°

UNLESS STATED

MATERIAL:

SEE ABOVE

FINISH:

SEE ABOVE

S/AREA:mm²**TITLE:**JACKSCREW DATAMATE
DIL VERTICAL SMT MALE
P/PLACE (NO J/S)**DRAWING NUMBER:****M80-522XXXXP**SHT
2
OF
2