

A

B

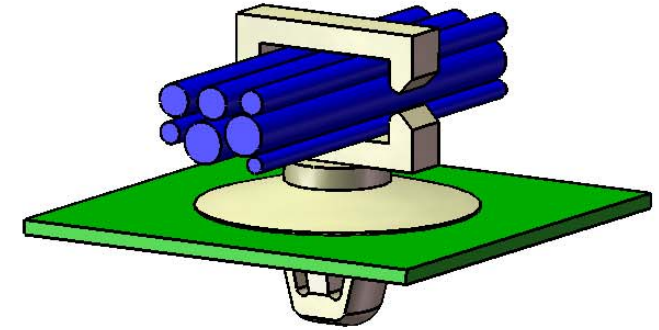
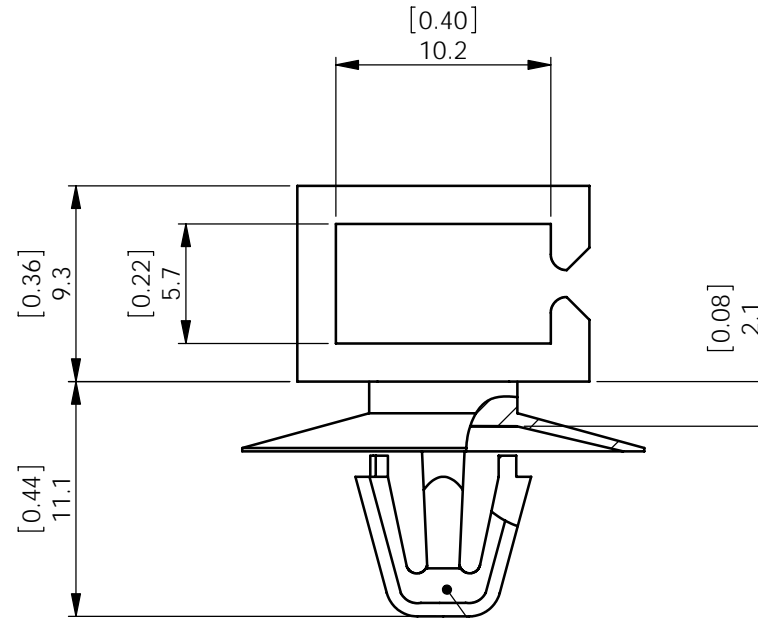
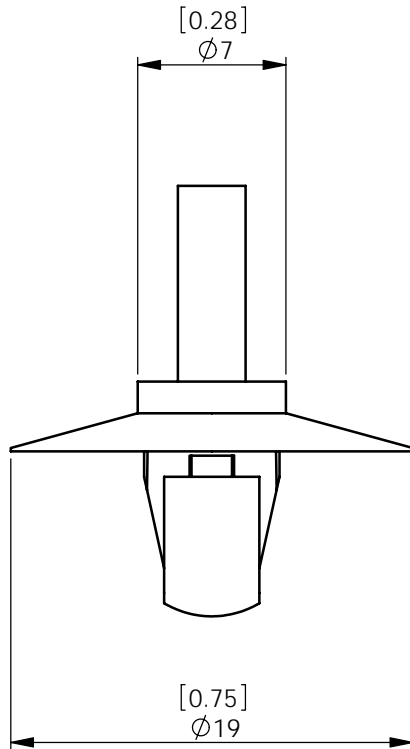
C

D

E

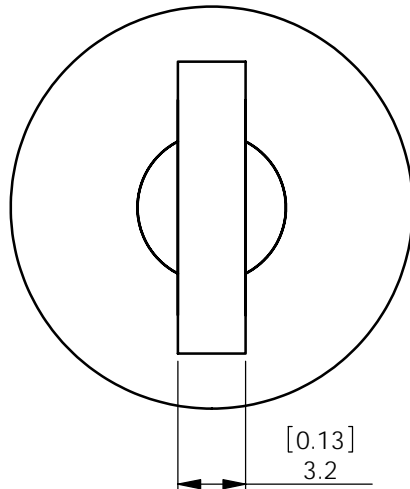
F


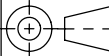
REV.	MODIFICATION.	DATE	DRN
05	ECN2008-023	04/02/08	TC



APPLICATION VIEW

TO SNAP LOCK IN A Ø6.5 [.256] ±0.08 [.003] HOLE
INTO A 0.8-1.6 [.032-.063] THICK PANEL



PART NUMBER		MATERIAL			
WS-SE-A-4-01		NYLON 6/6 UL94 V-2 (RMS-01)			
WS-SE-A-4-109		NYLON 6/6 UL94 V-2 HEAT STAB (RMS-109)			
INFORMATION CONTAINED IN THIS DOCUMENT IS CONFIDENTIAL TO RICHCO INTERNATIONAL Co. Ltd. AND MAY NOT BE DISCLOSED OR REPRODUCED IN WHOLE OR PART WITHOUT THEIR WRITTEN CONSENT.					
		ALL DIMENSIONS IN mm & [INCH] GENERAL TOLERANCES ± 0.25 [.010] UNLESS OTHERWISE STATED 1 DECIMAL PLACE ± 0.25 [.010] 2 DECIMAL PLACES ± 0.10 [.004] ANGULAR $\pm 1^{\circ}$		THIRD ANGLE 	
MATERIAL: SEE TABLE				COLOR: NATURAL	
DESCRIPTION: EDGE WIRE SADDLE CUPPED ARROWHEAD				PART No: WS-SE-A-4-XX	
DRG No: 04-087		NPR No: 2004-118 & 349		Mass:(g) 0.7	SHEET SIZE A4
DRN OW	DATE 20/04/04	CHKD NJB	DATE 23/08/04	SCALE NTS	SHEET No. 1 OF 1
E				FORM No. 0178/00	