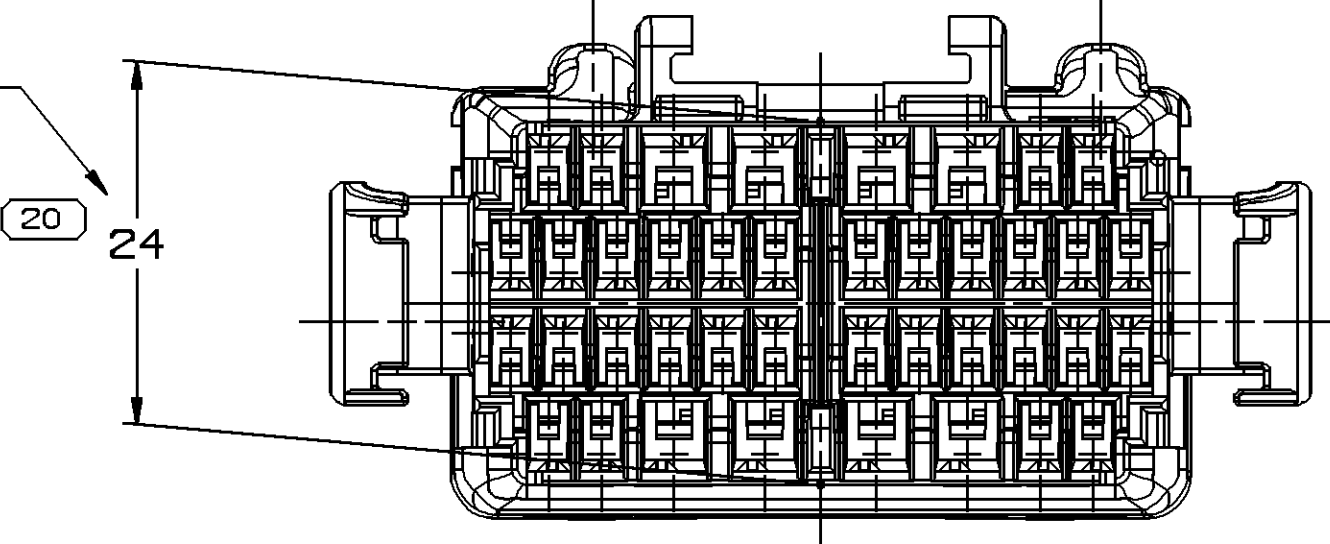
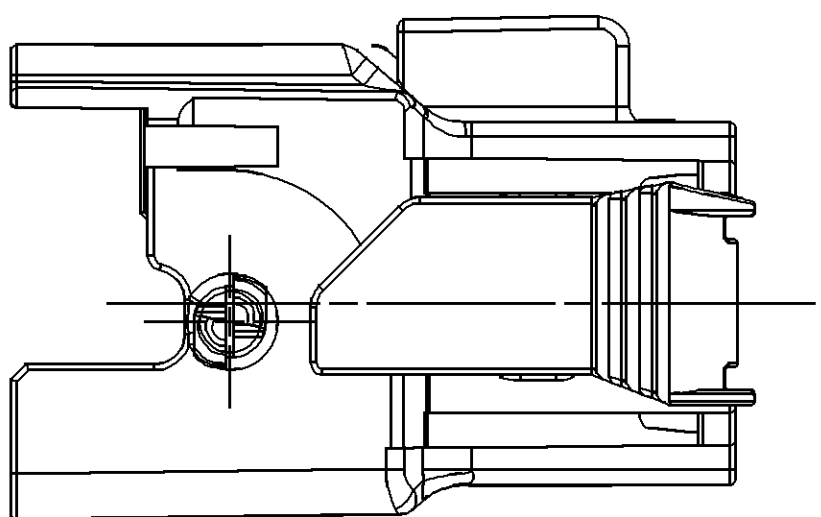
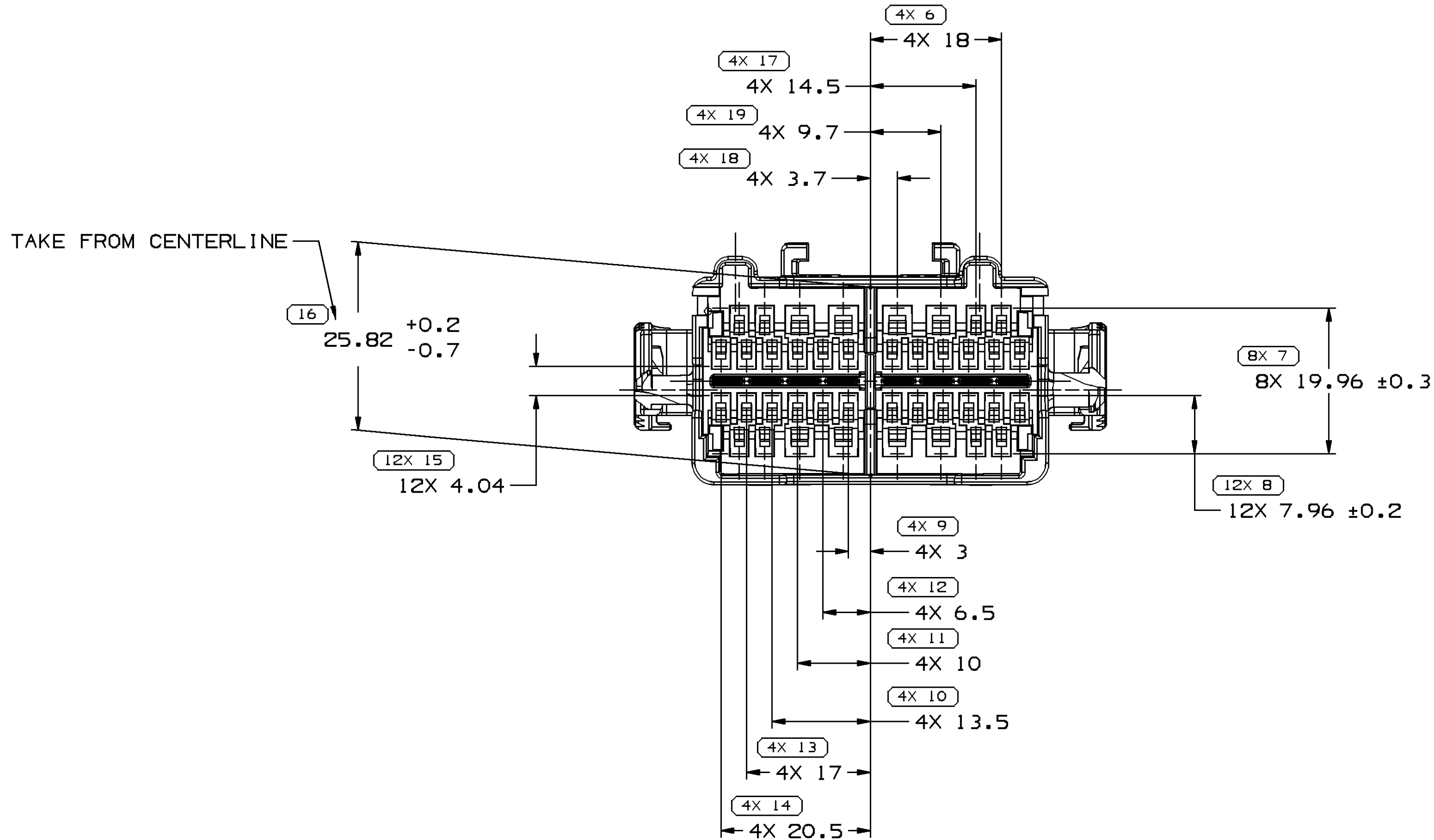
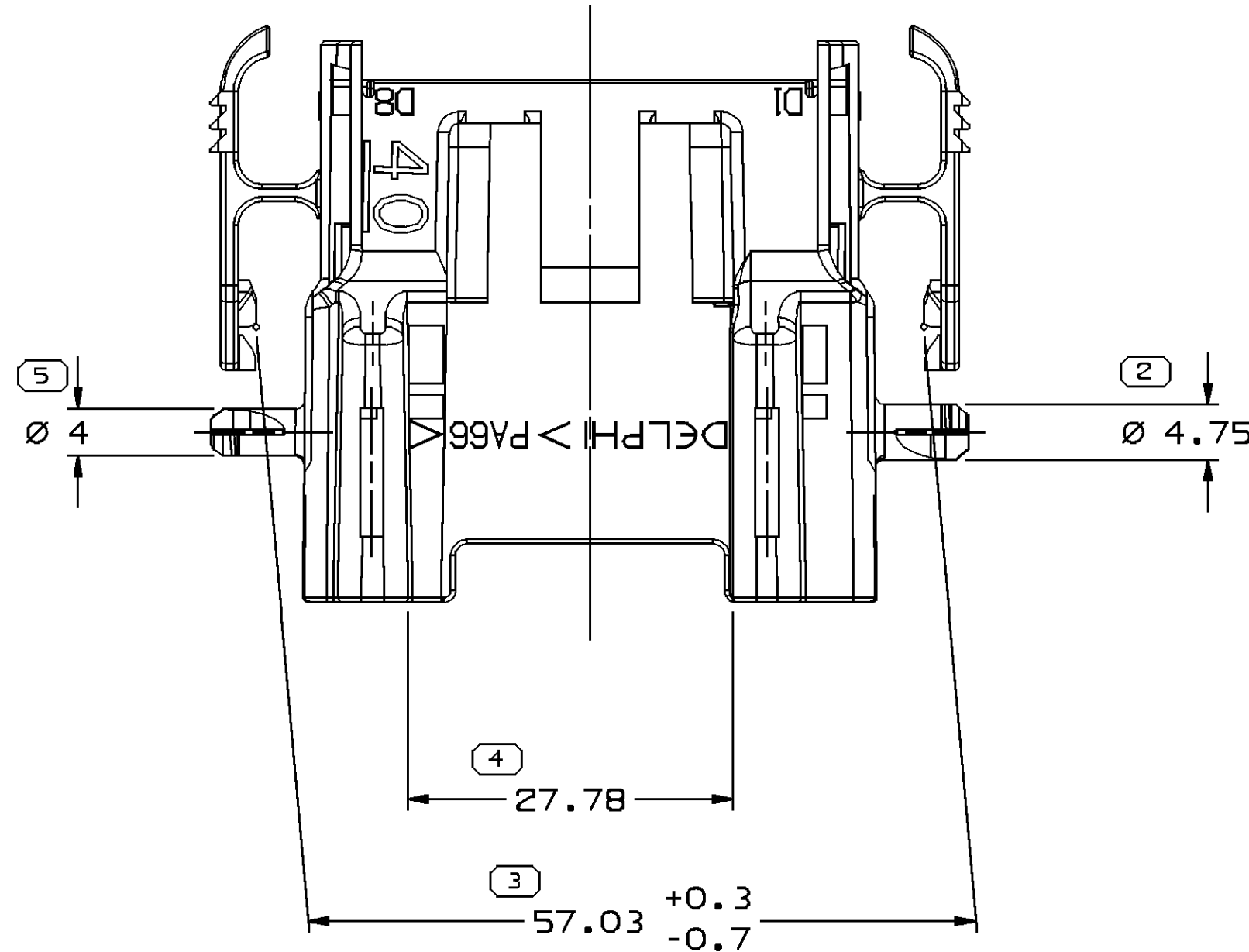


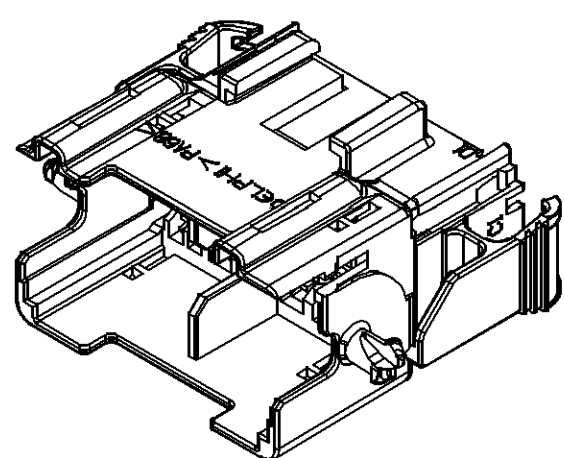
SYMBOL DEFINITION		
A DIMENSION WITHOUT AN INSPECTION REPORT SYMBOL ○ DOES NOT REQUIRE INSPECTION. IT MAY BE CONTROLLED ON THE INDIVIDUAL COMPONENT DRAWING.	TOTAL NO OF INSPECTIONS REQUIRED	79
	LAST NO. USED	20

MISSING SYMBOLS		DWS STATUS					ZONE	REVISION HISTORY	AUTH	DR	AP/D/P/D	
		DATE	STG	REV	N/P	CHG					I	2
NO MISSING SYMBOL NUMBER		28JUL03	R	01	-	-		RELEASED	243801	JAA	JAA	MLP
		27AUG03	R	02	-	-		REMOVED RADIUS FROM CLIP SLOT	245155	BRB	BRB	MLP
		18JUL06	R	02	AA	-		UPDATED PDM ATTRIBUTES	282056	EES	EES	MLP
		16OCT06	R	02	AB	-		REVISED GRAPHICS	285096	JEC	JEC	MLP



#### NOTES

- UNLESS OTHERWISE SPECIFIED AND/OR INDICATED:  
DIMENSIONS ARE TO FACE OF VIEW SHOWN AND  
AUTOMATICALLY ROUNDED BY COMPUTER FOR INSPECTION  
(SEE MATH MODEL FOR PRECISE DIMENSIONS). FOR ALL  
OTHER DIMENSIONS NOT SHOWN BUT REQUIRED FOR TOOL  
BUILD, SEE MATH MODEL FOR PRECISE TOOL PATH DATA.
- MATERIAL RECYCLING CODE >PA66< PER SAE J1344. (2.3)X(0.1) RAISED  
CHARACTERS AS SHOWN TO BE LOCATED ON ANY EXTERIOR SURFACE.  
OPTIONAL CONSTRUCTION TO BE NO MATERIAL RECYCLING CODE.
- MATING COMPONENTS OR EQUIVALENT:  
CONNECTOR 15448130
- THIS PART ACCEPTS THE FOLLOWING COMPONENTS OR EQUIVALENT:  
CAVITIES A1,A2,A7,AB,B1,B2,B3,B4,B5,B6,B7,B8,B9,  
B10,B11,B12,C1,C2,C3,C4,C5,C6,C7,C8,C9,C10,C11,C12,  
D1,D2,D7 & D8 TO ACCEPT 15304701 TERMINAL OR EQUIVALENT.  
MAX INSULATION CRIMP MUST BE LESS  
THAN 3.15 HIGH AND 2.8 WIDE.  
CAVITIES A3,A4,A5,A6,D3,D4,D5 & D6 TO ACCEPT 15304722 TERMINAL OR EQUIVALENT.  
MAX INSULATION CRIMP MUST BE LESS  
THAN 3.65 HIGH AND 4.2 WIDE.  
SECONDARY TERMINAL LOCK 15304841 (TPA) SHOULD BE USED WITH WIRE GAUGE >12  
SECONDARY TERMINAL LOCK 15359121 (TPA) SHOULD BE USED WITH WIRE GAUGE <=12  
LEVER 15336387
- (2.3)X(0.1) RAISED DELPHI CORPORATE BRAND TO BE LOCATED ON ANY  
EXTERIOR SURFACE, PREFERABLY VISIBLE AT FINAL ASSEMBLY.  
OPTIONAL CONSTRUCTION TO BE "PED" OR NO LOGO.
- CONNECTOR HAS ABILITY TO PRE-STAGE MALE BLADE  
STABILIZER 15401768
- TO BE USED WITH APPROPRIATE DELPHI PACKARD ELECTRIC SYSTEMS  
DESIGNED HOLDERS.
- TO BE PROCESSED USING DELPHI PACKARD ELECTRIC SYSTEMS  
BEST PRACTICE METHOD OR CUSTOMER ASSEMBLY INSTRUCTION.



PROCESS SENSITIVE DIMENSION										REFERENCE	
DIMENSIONS ENCLOSED IN ( ) INDICATE REFERENCE DIMENSIONS AND NO TOLERANCE LIMITS ARE ESTABLISHED											
DIMENSIONAL RANGE (MM)										THIRD ANGLE PROJECTION	
FROM TO										DO NOT SCALE	
0 20 30 70 100 150 200 250 300 350 400										USE MATH DATA	
TOLERANCE UNLESS OTHERWISE SPECIFIED										UNIGRAPHICS	
±0.15 ±0.25 ±0.3 ±0.4 ±0.5 ±0.6 ±0.8 ±1 ±1.2											
ANGULAR TOLERANCE 45°											

# Mouser Electronics

Authorized Distributor

Click to View Pricing, Inventory, Delivery & Lifecycle Information:

[Delphi Connection Systems:](#)

[15475870](#)