



Bay Linear

Inspire the Linear Power

3.0A Step Down Switching voltage Regulator

Adjustable & Fix Output

LM2576

Description

The Bay Linear LM2576 contains fixed and adjustable switching voltage regulators that require a minimum of external components. All circuitry necessary to build a buck-switching regulator is included.

The LM2576 is available in 3.3V; 5V, 12V & 15V fixed voltages, or an adjustable version with an output voltage range from 1.23V to 37V. The guaranteed accuracy for specified input and load conditions is $\pm 4\%$.

The LM2576 can supply 3A with an excellent load and line regulation. Protection such as cycle-by-cycle current limiting or thermal shutdown has been designed. In standby mode, the current consumption has been minimized (200 μ A).

For 1A step-down switching regulators refer to B2575 data sheets

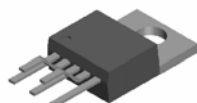
Features

- **Guaranteed 3A Output Current**
- **High Efficiency**
- **Wide Input Voltage, up to 40V**
- **3.3V, 5V, 12V, 15V and Adjustable Output Versions**
- **Thermal Shutdown and Current Limit Protection**
- **Requires only 4 External Components**
- **Low Power Standby Mode < 200 μ A Typical**
- **Shutdown Capability (Standby Mode)**
- **52kHz Fixed Frequency Internal Oscillator**
- **Uses Standard Inductors**
- **Pin-to-Pin Compatible with LM2576**

Applications

- **Efficient Pre-Regulator for Linear Regulators**
- **On-card Switching Regulators**
- **Positive to Negative Converter (Buck-Boost)**
- **Simple High-efficiency Step-down (Buck)**
- **Portable Instruments**

Pin Connection

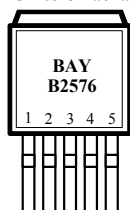


Ordering Information

Devices	Package	Temp.
LM2576T-X	TO-220	-40 °C to 125 °C
LM2576S-X	TO-263	-40°C to 125 °C
LM2576J-X	LPDD	-40°C to 125 °C

X= Output Voltage (X=3.3V, 5.0V, 12V, 15V or Blank for Adjustable)
Consult factory for other fixed voltages.

TO-263-5 Package



Top View

- 1) V_{IN}
- 2) V_{OUT}
- 3) GND
- 4) FB
- 5) ON/OFF

TO-220-5 Package



Top View

- 1) V_{IN}
- 2) V_{OUT}
- 3) GND
- 4) FB
- 5) ON/OFF

Absolute Maximum Rating

Parameter	Symbol	Value	Unit
Maximum Input Voltage	V_{IN}	45	V
Power Dissipation	P_O	Internally Limited	W
Off Pin Input Voltage		$-0.3V < V < V_{IN}$	
Output Voltage		-1	V
Supply Voltage		40	V
Operating Junction Temperature Range Control Section Power Transistor	T_J	$-40 < T_J < 85$	°C
Storage Temperature Range	T_{STG}	-65 to 150	
Lead Temperature (Soldering 10 Sec.)	T_{LEAD}	260	

ELECTRICAL CHARACTERISTICS $T_A = 25^\circ\text{C}$ $V_{IN} = 12\text{V}$, $I_{LOAD} = 100\text{mA}$ unless otherwise specified.

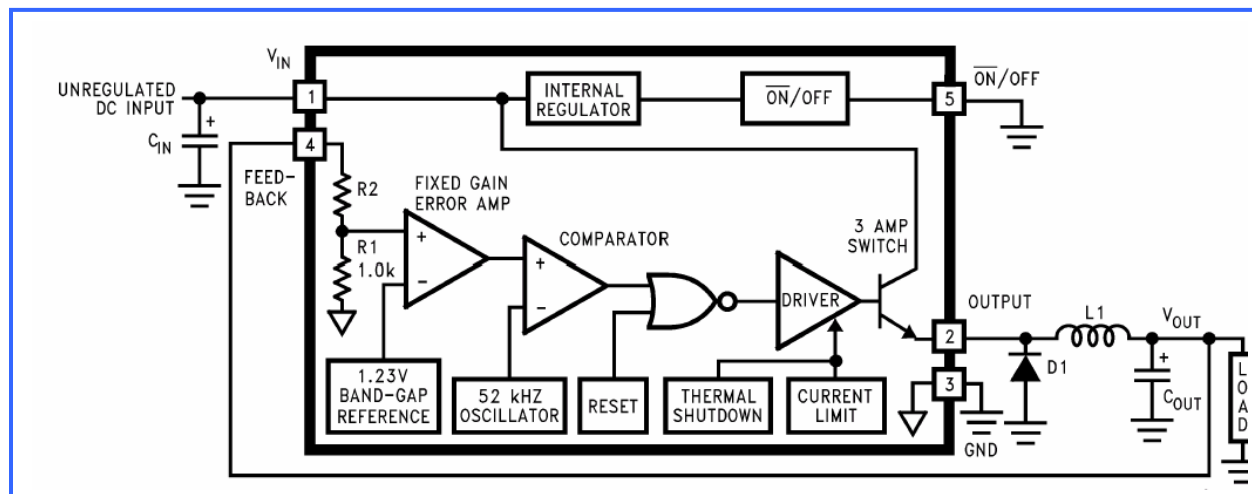
Boldface type applies over full Operating Temperature Range.

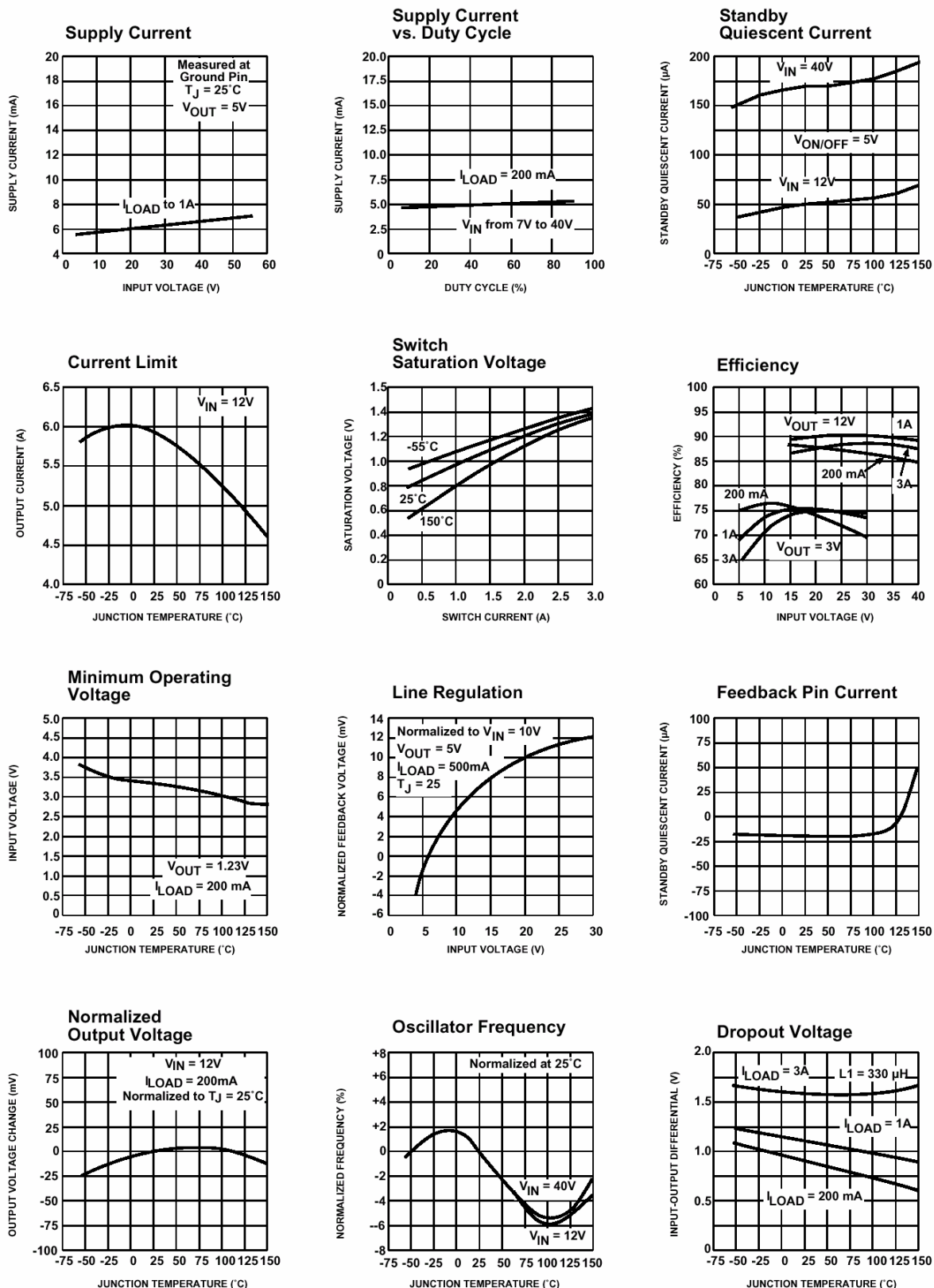
Parameter	Conditions	Typ	LM2576 Min	Max	Units
Adjustable Regulators (Note 3)(Note 8)					
Output Voltage (V _{OUT})	V _{IN} = 12V, I _{LOAD} = 0.5A, V _{OUT} = 5V	1.230	1.217	1.243	V
	0.5A ≤ I _{LOAD} ≤ 3A, 6V ≤ V _{IN} ≤ 40V, V _{OUT} = 5V	1.230 1.230	1.193 1.180	1.267 1.280	V
Efficiency (Note 7)	V _{IN} = 12V, I _{LOAD} = 3A, V _{OUT} = 5V	82			%
3.3V Version (Note 3)(Note 9)					
Output Voltage (V _{OUT})	V _{IN} = 12V, I _{LOAD} = 0.5A, V _{OUT} = 3.3V	3.3	3.234	3.366	V
	0.5A ≤ I _{LOAD} ≤ 3A, 6V ≤ V _{IN} ≤ 40V, V _{OUT} = 3.3V	3.3 3.3	3.168 3.135	3.432 3.465	V
Efficiency	V _{IN} = 12V, I _{LOAD} = 3A	75			%
5V Version (Note 3)(Note 9)					
Output Voltage (V _{OUT})	V _{IN} = 12V, I _{LOAD} = 0.5A, V _{OUT} = 5V	5.0	4.900	5.100	V
	0.5A ≤ I _{LOAD} ≤ 3A, 8V ≤ V _{IN} ≤ 40V, V _{OUT} = 5V	5.0 5.0	4.800 4.750	5.200 5.250	V
Efficiency (Note 7)	V _{IN} = 12V, I _{LOAD} = 3A, V _{OUT} = 5V	82			%
12V Version (Note 3)(Note 9)					
Output Voltage (V _{OUT})	V _{IN} = 25V, I _{LOAD} = 0.5A, V _{OUT} = 12V	12	11.760	12.240	V
	0.5A ≤ I _{LOAD} ≤ 3A, 15V ≤ V _{IN} ≤ 40V, V _{OUT} = 12V	12 12	11.520 11.400	12.480 12.600	V
Efficiency (Note 7)	V _{IN} = 25V, I _{LOAD} = 3A	88			%
15V Version (Note 3)(Note 9)					
Output Voltage (V _{OUT})	V _{IN} = 30V, I _{LOAD} = 0.5A, V _{OUT} = 15V	15	14.700	15.300	V
	0.5A ≤ I _{LOAD} ≤ 3A, 18V ≤ V _{IN} ≤ 40V, V _{OUT} = 15V	15 15	14.400 14.250	15.600 15.750	V
Efficiency (Note 7)	V _{IN} = 30V, I _{LOAD} = 3A	88			%

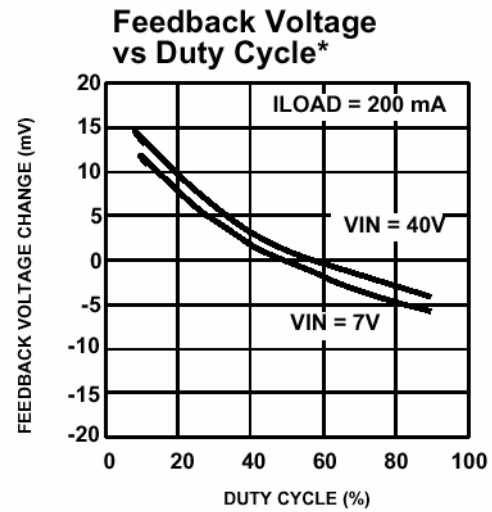
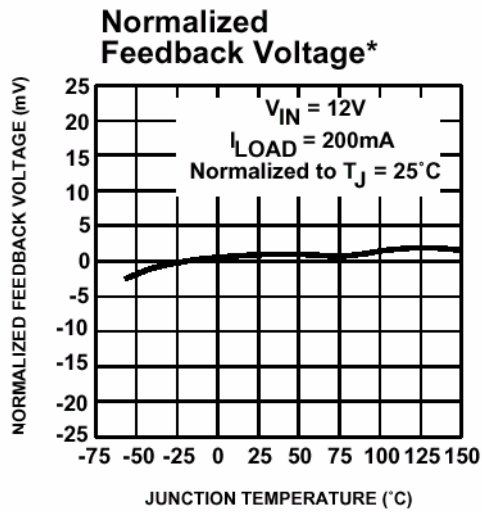
ELECTRICAL CHARACTERISTICS $T_A = 25^{\circ}\text{C}$ $V_{\text{IN}} = 12\text{V}$, $I_{\text{LOAD}} = 100\text{mA}$ unless otherwise specified.
Boldface type applies over full Operating Temperature Range.

Parameters	Conditions	Typ	LM2576 Min	Max	Units
Adjustable Regulator					
Feedback Bias Current	$V_{OUT} = 5V$	50		100 500	nA
Fixed and Adjustable Regulators					
Oscillator Frequency		52	47 42	58 63	kHz
Saturation Voltage	$I_{OUT} = 0.5A$, (Note 4)	1.4		1.8 2.0	V
Max Duty Cycle	(Note 5)	98	93		%
Current Limit	Peak Current, $t_{ON} \leq 3\mu s$, (Note 4)	5.8	4.2 3.5	6.9 7.5	A
Output Leakage Current	V_{IN} , (Note 6), Output = 0V (Note 6), Output = -1V	7.5		2 30	mA
Quiescent Current	(Note 6)	5		10	mA
Standby Quiescent Current	ON/OFF Pin = 5V (OFF)	50		200	μA
Thermal Resistance	T,U package, Junction to Ambient, (Note 7) T,U package, Junction to case	65 2			$^{\circ}C/W$
ON/OFF Control, Fixed & Adjustable Regulators (Note 8) (Note9)					
OFF Input Level	$V_{OUT} = 0V$	1.4	2.2 2.4		V
ON Input Level	$V_{OUT} = 15V$ or 5V	1.2		1.0 0.8	V
OFF Logic Current	ON/OFF Pin = 5V (OFF)	4		30	μA
ON Logic Current	ON/OFF Pin = 0V (ON)	0.01		10	μA

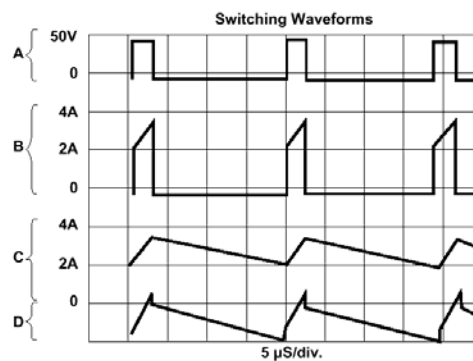
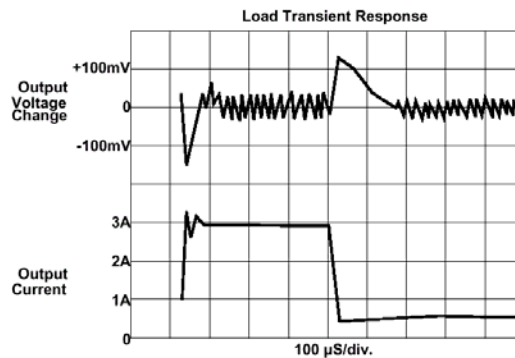
Note 9: Test circuit refers to figure 3.







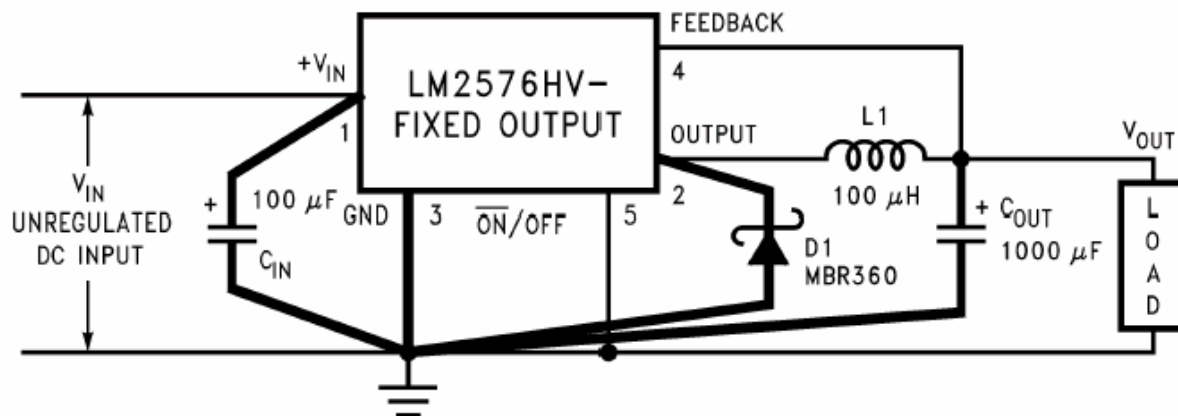
* Adjustable version only



$V_{OUT} = 5V$ $V_{IN} = 45V$

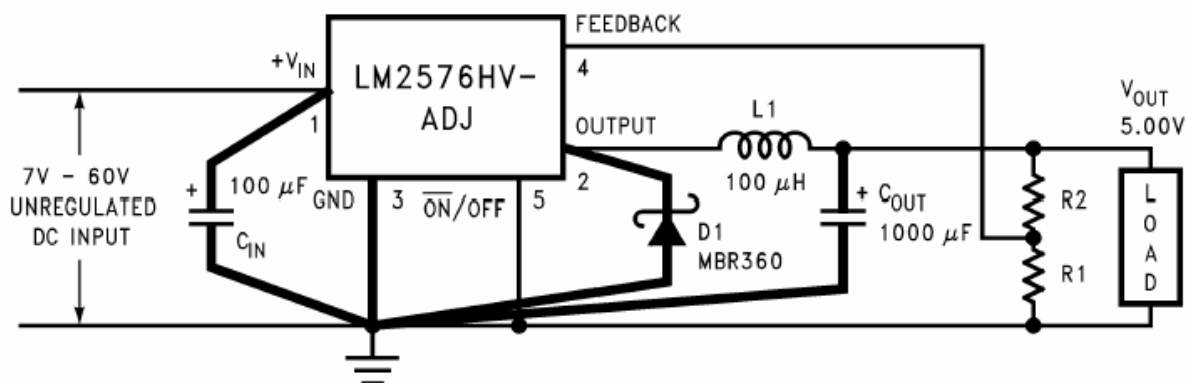
A: Output pin voltage 50V/div
 B: Output pin current 2A/div
 C: Inductor current 2A/div
 D: Output ripple voltage 50 mV/div., AC coupled
 Horizontal Time Base: 5 μS /div

Fixed Output Voltage Versions



C_{IN} — 100 μ F, 75V, Aluminum Electrolytic
 C_{OUT} — 1000 μ F, 25V, Aluminum Electrolytic
 D_1 — Schottky, MBR360
 L_1 — 100 μ H, Pulse Eng. PE-92108
 R_4 — 2k, 0.1%

Adjustable Output Voltage Version



$$V_{OUT} = V_{REF} \left(1 + \frac{R_2}{R_1} \right)$$

$$R_2 = R_1 \left(\frac{V_{OUT}}{V_{REF}} - 1 \right)$$

where $V_{REF} = 1.23V$, R_1 between 1k and 5k.

Advance Information- These data sheets contain descriptions of products that are in development. The specifications are based on the engineering calculations, computer simulations and/or initial prototype evaluation.

Preliminary Information- These data sheets contain minimum and maximum specifications that are based on the initial device characterizations. These limits are subject to change upon the completion of the full characterization over the specified temperature and supply voltage ranges.

The application circuit examples are only to explain the representative applications of the devices and are not intended to guarantee any circuit design or permit any industrial property right to other rights to execute. Bay Linear takes no responsibility for any problems related to any industrial property right resulting from the use of the contents shown in the data book. Typical parameters can and do vary in different applications. Customer's technical experts must validate all operating parameters including "Typical" for each customer application.

LIFE SUPPORT AND NUCLEAR POLICY

Bay Linear products are not authorized for and should not be used within life support systems which are intended for surgical implants into the body to support or sustain life, in aircraft, space equipment, submarine, or nuclear facility applications without the specific written consent of Bay Linear President.
