

Features/Benefits

SERIES 5038

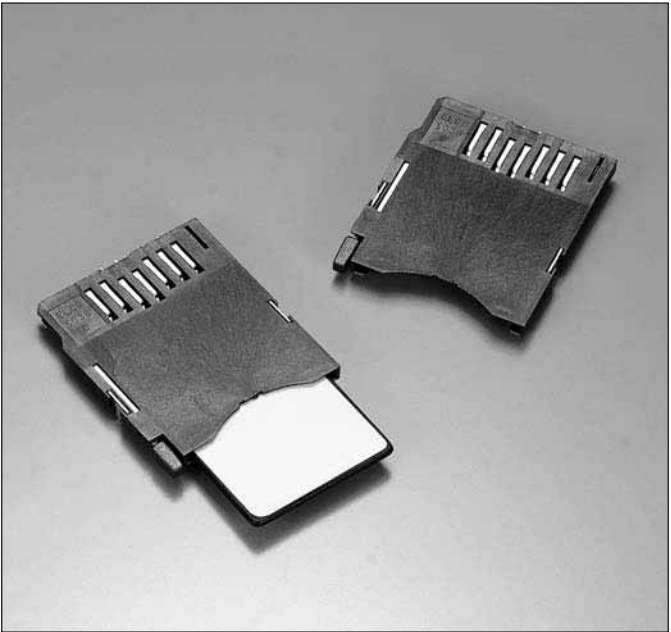
Series 5038 is the MMC (Multi Media Card) Connector developed to comply with the requirement of high-density mounting in the market and designed especially for the slim type Note PC and Portable equipment.

FEATURES

- SMT, Single, Reverse Type
- Correspond to the size of MMC Card (32mm (1.260) x 24mm (0.945) x 1.4mm (0.055))
- Both ejector and without ejector type available
- Ejector type achieves easy insertion and separation of card
- Low-profile of as much as 2.6mm (0.102)
- Adoption of guide rail type which prevents the direct contact of card on the board for the low-profile design
- High durability for 10,000 cycles insertion/separation

TECHNICAL SPECIFICATIONS

Number of Contacts:	7P
Pitch:	2.5mm (0.098)
Current Rating:	AC0.5A Max. DC0.5A Pin
Voltage Rating:	AC5V DC5V Pin
DW Voltage:	500V rms/min.
Mating Cycles	10,000

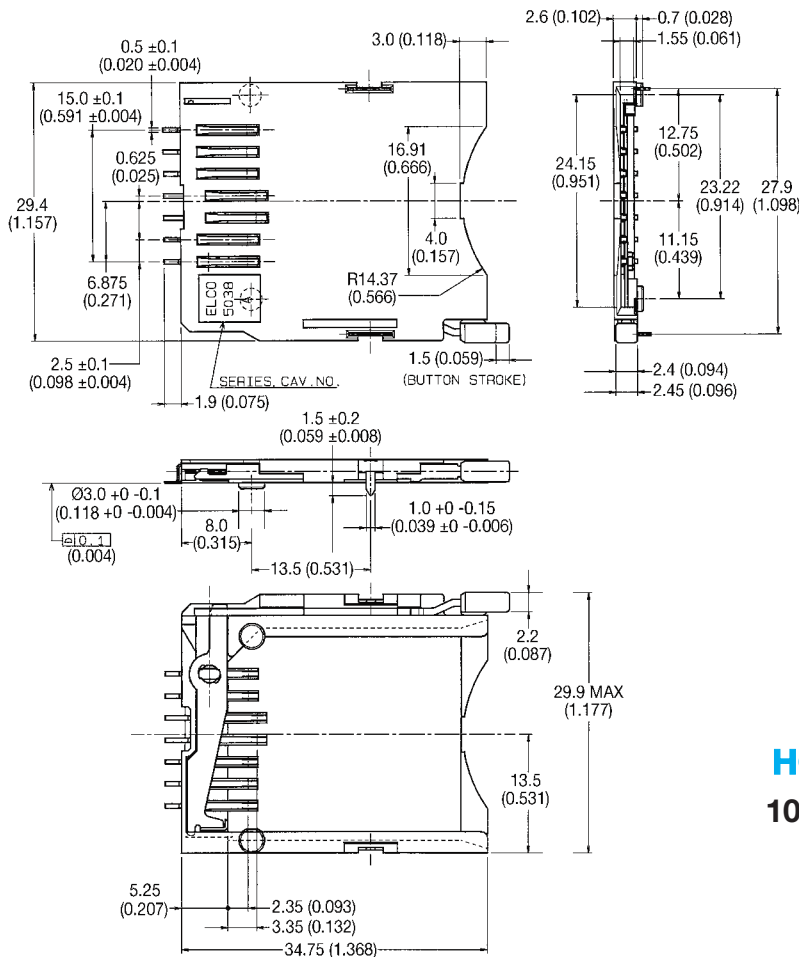


PRODUCT SELECTION GUIDE

Keying	Ejector Style		How To Order	Page
Reverse	With ejector	Reflow pin type	10 5038 007 052 862	35
	Without ejector	Reflow pin type	10 5038 007 252 862	36
		SMT Type	10 5038 007 251 862	36
	Push/Push ejector	Reflow pin type	10 5038 007 353 862	37
		SMT Type	10 5038 007 354 862	37

Multi Media Card Connectors

Series 5038 With Ejector

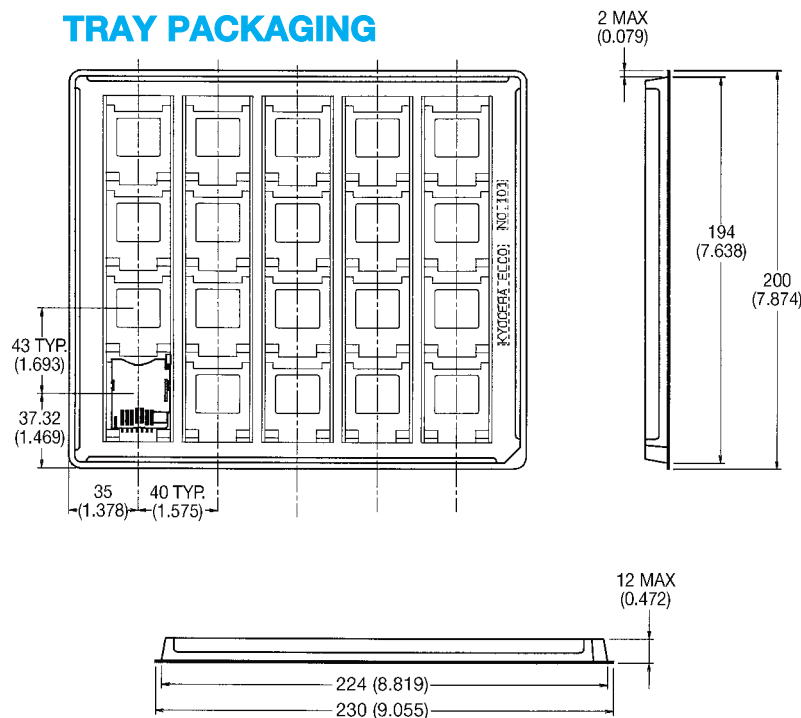


HOW TO ORDER

10 5038 007 052 862

QUANTITY: 20/TRAY
200/BOX

TRAY PACKAGING

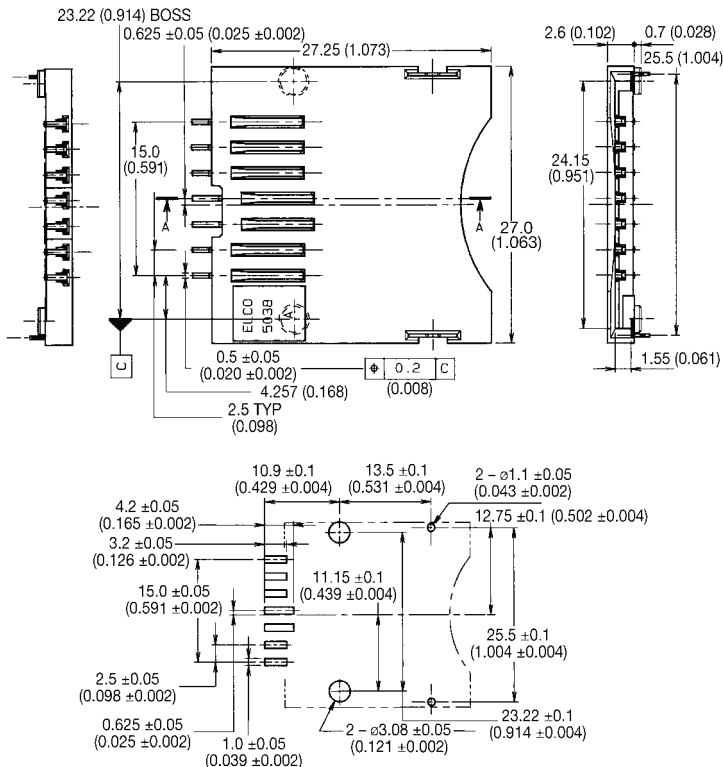


Multi Media Card Connectors

Series 5038 Without Ejector



REFLOW PIN TYPE



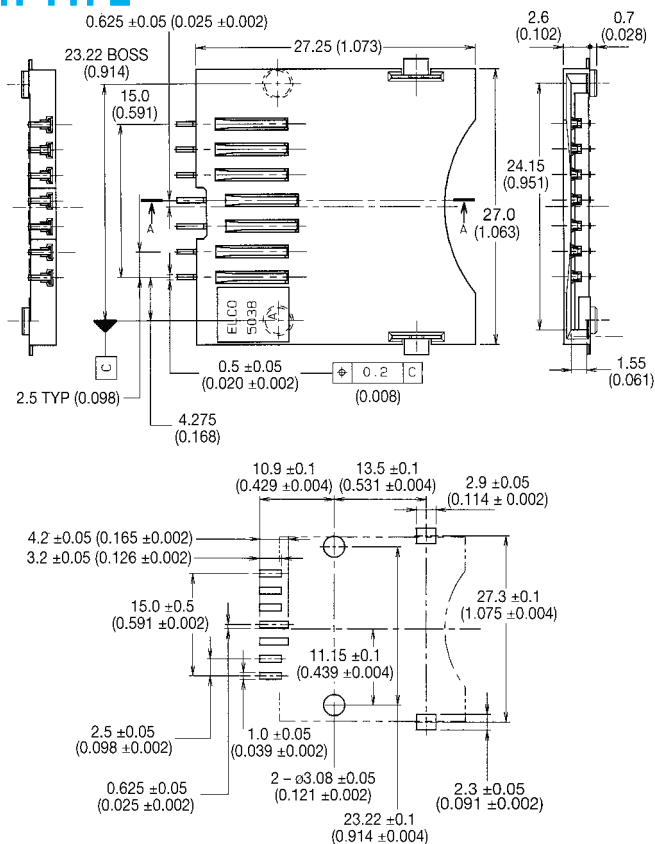
RECOMMENDED PC BOARD LAYOUT

HOW TO ORDER

10 5038 007 252 862

QUANTITY: 25/TRAY
250/BOX

SMT TYPE



RECOMMENDED PC BOARD LAYOUT

HOW TO ORDER

10 5038 007 251 862

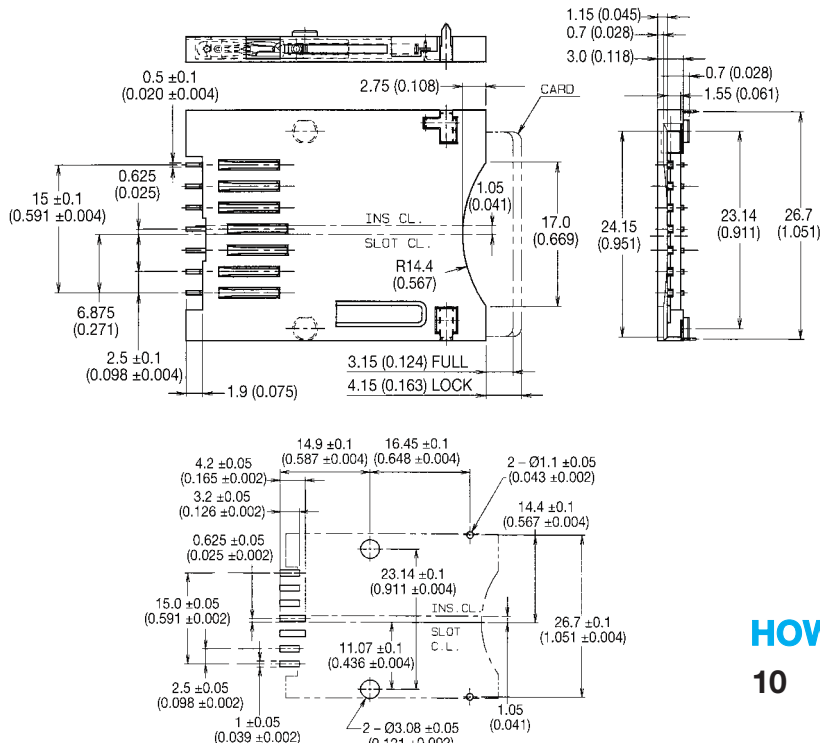
QUANTITY: 25/TRAY
500/BOX

Multi Media Card Connectors

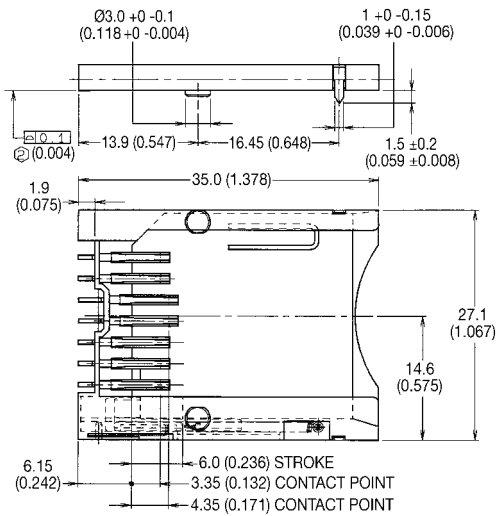
Series 5038 Spring Eject Type



REFLOW PIN TYPE



RECOMMENDED PC BOARD LAYOUT

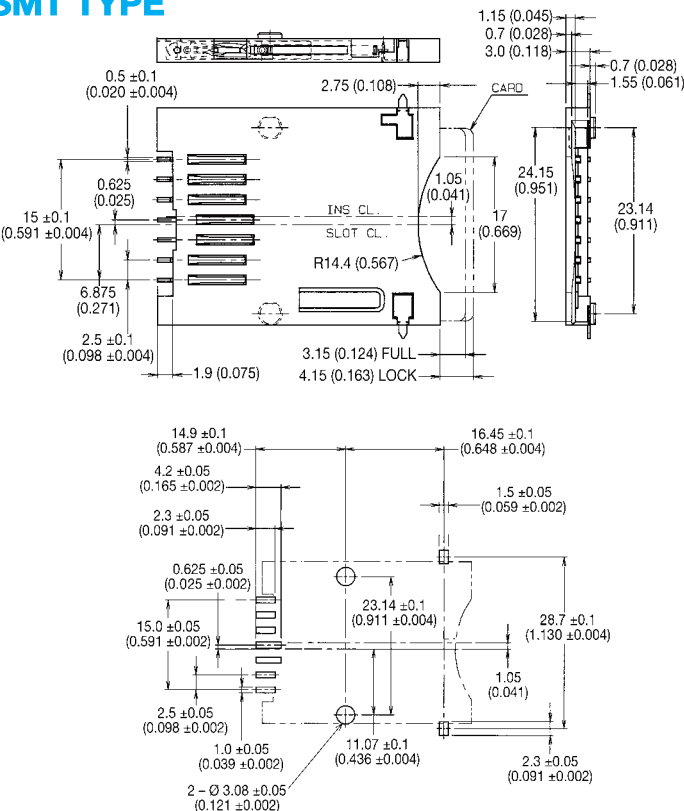


HOW TO ORDER

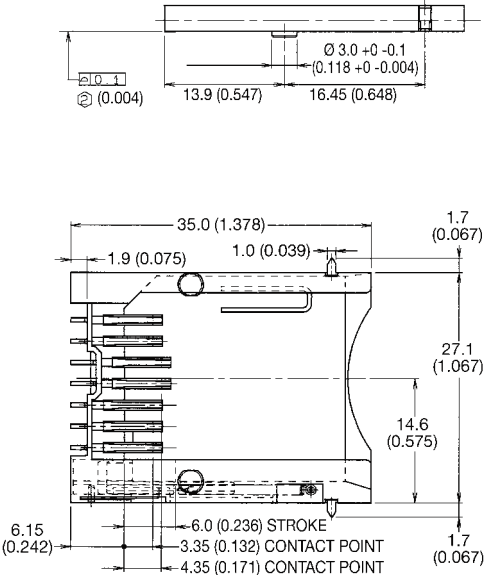
10 5038 007 353 862

QUANTITY: 25/TRAY
250/BOX

SMT TYPE



RECOMMENDED PC BOARD LAYOUT



HOW TO ORDER

10 5038 007 354 862

QUANTITY: 20/TRAY
400/BOX



Mouser Electronics

Authorized Distributor

Click to View Pricing, Inventory, Delivery & Lifecycle Information:

AVX:

10-5038-007-052-833+