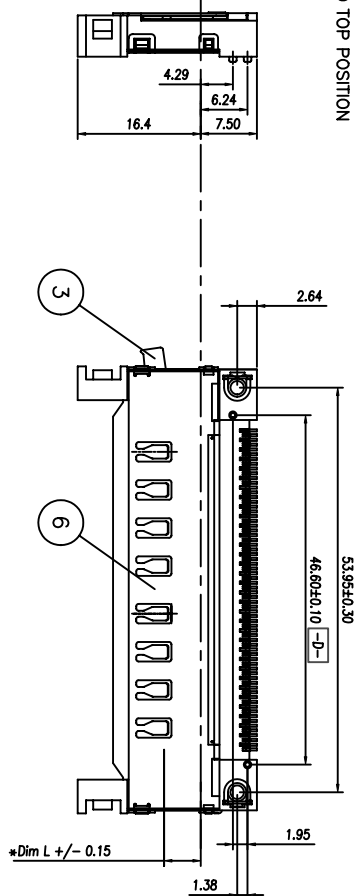
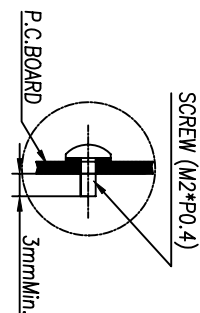
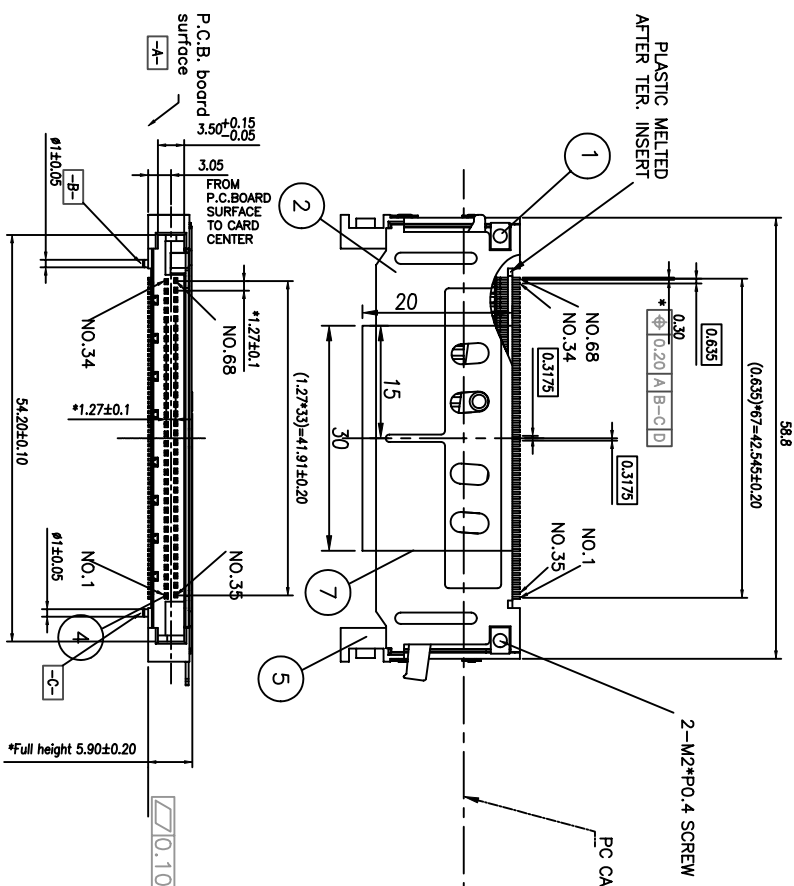


PRODUCT NO
10064495-03BLF



Interface Dim L ± 0.15	PIN NUMBER
3.5mm	36,67
4.25mm	All Other Pins
5.0mm	1,17,34,35,51,68

1	SCORE M2+PQ.4	2	COPPER ALLOY	NICKEL(60u MIN) PLATING
2	GROUND	1	STAINLESS STEEL	
3	LINK-R	1	STAINLESS STEEL	
4	PIN CONTACT S-O 0.3mm BELOW MOUNT	68	COPPER ALLOY	CONTACT AREA:GOLD 12u" OVER NICKEL SOLDER TAIL: WHITE 1in (100-200u") OVER NICKEL(50-80u")
5	HOUSING S-O 0.3mm BELOW MOUNT	1	LOP(BLACK)	
6	GROUND BELOW	1	COPPER ALLOY	CONTACT AREA:GOLD FLASH UNDERPLATING : NICKEL PLATING FOR ALL 30u" ~50u"
7	KAPTON	1	KAPTON	
	DESCRIPTION	QTY	MATERIAL	FINISHED

[illegible]



- NOTES:
1. Specification:
Product Spec: GS-12-343.
Packaging Spec: GS-14-1006.
 2. The Housing will withstand exposure to 260°C peak temperature for 10 seconds in a Convection, IR or Vaper Phase Reflow Oven.
 3. This product (10064495-03BLF) meets the European Union Directive as described in GS-22-008.
 4. The products where the part number ends in "LF" meet the criteria shown in the NOTES 2 and 3, are considered RoHS compatible.

mat'l. code				tolerances, unless otherwise specified				CUSTOMER COPY		FCI	
ltr	ecn no	dr	date	linear		projection	scale	title		product family	code
A	106-0004	A.C.	1/6/06	.XX ± 0.30		MM	NA	SMTIL CARBUS HEASER BELOW MOUNT S/O=0.3mm L PUSH	EDGE CARD	10064495	code
B	107-1028	S.Lin	03/26/07	.XXX ± 0.10	angles 0° ± 2°						sheet
					dr	ALLEN CHANG	12/19/05				2 of
					enfr	ALLEN CHANG	12/19/05				
					chr	STERLING LIN	12/19/05				
					qppd	HC LIU	12/19/05				
sheet	revision	B	B								
index	sheet	1	2	3							

ACAD

cage code