

## Plug-in Screw Connector System for Printed Circuit Boards

951-SV (-DS) | 5.00 mm (0.197 in) Spacing - 2-32 poles

### PICTURES



951-SV-DS



951-SV-DS-1



950-PFB & 951-SV-DS

### TECHNICAL INFORMATION

#### Description

Plug

#### Technical Data

**Center to Center Spacing:** 5.000 mm (0.197 in)

**Nominal Cross Section:** 1.5 mm<sup>2</sup> (2325 mils<sup>2</sup>)

**Wire Stripping Length:** 5.000 mm (0.197 in)

#### Bill of Materials

**Pole Version :** 2-8

**Molding :** Polyamide, Self extinguishing UL 94, V-0

**Color :** Grey

**Temperature limits :**

**Short Time :** 140°C (284°F)

**Continuous :** 105°C (221°F)

**Low Limit :** -40°C (-40°F)

**Comparative Tracking Index :** CTI ? 600 V

**Oxygen Index Rating :** 32 %

**Pole Version :** 9-32

**Molding :** Polyamide (glass fiber reinforced), Self extinguishing UL 94, V-0

**Color :** Grey

**Temperature limits :**

**Short Time :** 200°C (392°F)

**Continuous :** 105°C (221°F)

**Low Limit :** -40°C (-40°F)

**Oxygen Index Rating :** 33 %



**Terminal Body:** Nickel plated copper alloy

**:** Tin plated copper alloy

**Screw:** Slotted head, zinc plated blue passivated, steel substrate M2.6

## APPROVAL INFORMATION

UL File No. E69841 | CSA File No. LR24322

Type	Current (A)	Voltage (V)	Application Group	AWG	Screw Tightening Torque
 951-SV (-DS) 5.0 mm	7	300	B	26-14	3.5 lbfin
 951-SV (-DS) 5.0 mm	7	300	B	26-14	0.4 lbfin

### Alternative Approval Information

Type	Current (A)	Voltage (V)	Application Group	AWG	Screw Tightening Torque
951-SV (-DS) 10.0 mm	7	300	B		
951-SV (-DS) 10.0 mm	7	300	B	26-14	0.4 lbfin

### International Approval Information



Rated Impulse Withstand Voltage : 2500 V

## PLUGGING PARTS

### Plug-In Direction and Wire Entrance Parallel to PCB



**TYPE 950-FB**  
5.00 mm spacing - 2-32 poles



**TYPE 950-PFB**  
5.00 mm spacing - 2-32 poles

### Plug-In Direction and Wire Entrance Perpendicular to PCB



**TYPE 951-FB**  
5.00 mm spacing - 2-32 poles



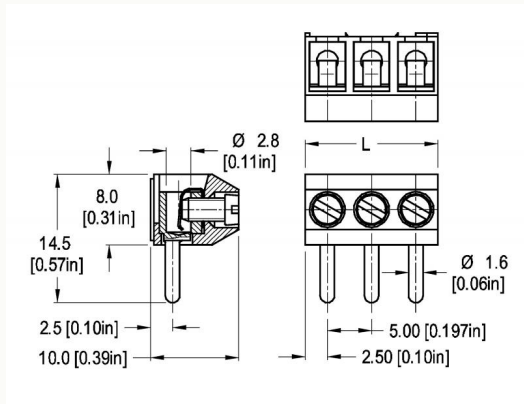
**TYPE 951-PFB**  
5.00 mm spacing - 2-32 poles

### Plug-In Direction and Wire Entrance 45 to PCB



**TYPE 974-FB**  
5.00 mm spacing - 2-26 poles

## TECHNICAL DRAWING



### Description :

Length of Connector (L)

$L = \text{No. of Poles} \times \text{Center to Center Spacing}$

## SECTION A - SERIES 94-FB/SV, 95-FB/SV AND 974-FB



### Terminal Blocks for Printed Circuit Boards

The Plug-In design is recommended to provide secure yet easy connection and disconnection to simplify service, assembly or testing the SV type plug is usually pre-wired to prevent misaligned insertion of wires during servicing in the field.

The use of a stainless steel contact spring provides;od pressure and retention.

Blocks can be installed end-to-end to provide the needed pole configuration while maintaining center-to-center spacing.

We strongly recommend the optional wire protectors (DS designation) to prevent damage to stranded wiring from the clamping screw mechanism. Solid wiring does not require wire protectors this makes insertion of larger wires easier in field wiring applications.

Each product has a "How To Order" area as well as a complete listing of UL and CSA approval specifications, available options and accessories.