

MICRO SWITCH

A DIVISION OF MINNEAPOLIS-HONEYWELL REGULATOR COMPANY

MINNEAPOLIS, MINN.

FED. MFR. CODE 91929

PACKET

CATALOG LISTING

6PA34

(M) SKETCH 17520
ISSUE 3

REPLACES

RELEASE NO. SR-7433

CHECK E 1 L 14 APR 58

CHECK E 1 L 14 APR 58

CHECK E 1 L 14 APR 58

CHECK E 1 L 14 APR 58

CHECK E 1 L 14 APR 58

CHECK E 1 L 14 APR 58

CHECK E 1 L 14 APR 58

CHECK E 1 L 14 APR 58

6PA34

M

DRAWING
NUMBER

7

ISSUE

REVISIONS

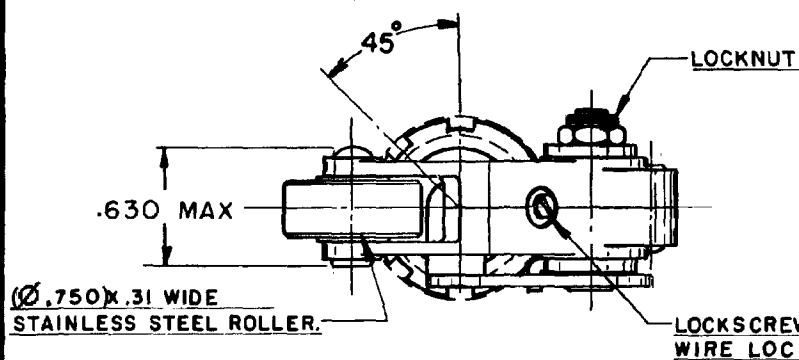
A	CO13643	OMW	19 NOV 59
B	CO19456	MBF	2 OCT 64
C	CO23813	PER	19 FEB 68
D	CO26688	MBF	12 JAN 70
E	CO95373	JAH	12 JUL 99
F	0007744	TCC-AP	3 SEP 04

FORMTEK

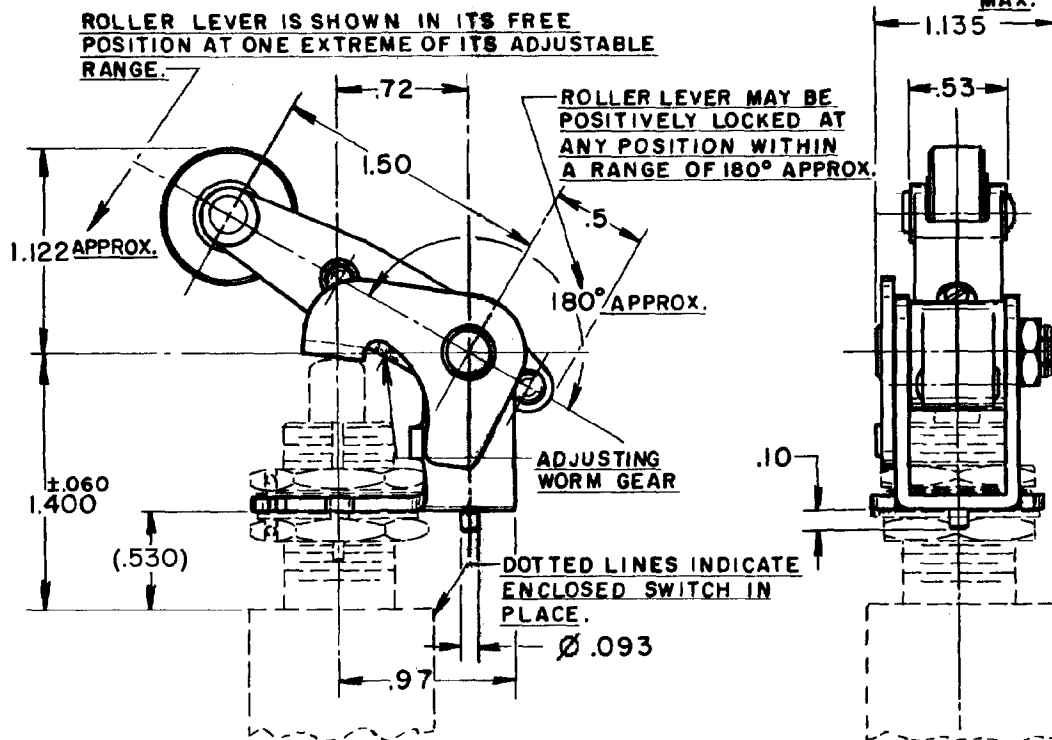
0-50376

DRAWN

K.L.B. 10, APRIL '58



WARNING- THIS PRODUCT IS SUBJECT TO THE U.S. INTERNATIONAL TRAFFIC IN ARMS REGULATIONS (ITAR), AND THE EXPORT CONTROL LAWS OF THE UNITED STATES. TRANSFER OF TECHNICAL DATA PERTAINING TO THIS PRODUCT BY ANY MEANS TO A FOREIGN PERSON PER ITAR DEFINITIONS, WHETHER IN THE UNITED STATES OR ABROAD, WITHOUT A PRIOR EXPORT LICENSE OR OTHER APPROVAL FROM THE U.S. DEPARTMENT OF STATE, IS PROHIBITED.



NOTE-

- 1-UNIT DESIGNED TO WITHSTAND TEMPERATURE OF 600°F
- 2-REPLACEMENT ARM IS PART NO. 6PA358

ANSI Y14.5M-1982 APPLIES

THIS DRAWING COVERS A PROPRIETARY ITEM AND IS THE PROPERTY OF MICRO SWITCH, A DIVISION OF HONEYWELL. THIS DRAWING IS NOT TO BE COPIED OR USED WITHOUT THE APPROVAL OF MICRO SWITCH.

CHARACTERISTICS (WITH 12 HR4-S SWITCH INSTALLED)

OPERATING FORCE	3-6 LBS.
FULL OVERTRAVEL FORCE	15 LBS. MAX.
RELEASE FORCE	2 LBS. MIN.
PRETRAVEL	.080 MAX.
DIFFERENTIAL TRAVEL	.040 MAX.
OVERTRAVEL	.500 MIN.

ELECTRICAL DATA

CONTACT ARRANGEMENT	BREAK DISTANCE
---------------------	----------------

SCALE-FULL

DO NOT SCALE PRINT

UNLESS OTHERWISE SPECIFIED
DIMENSIONS ARE IN INCHES

TOLERANCES ARE:		
ONE PLACE	(.0)	±.030
TWO PLACE	(.00)	±.015
THREE PLACE	(.000)	±.008
ANGLES		± 5°

WEIGHT

Mouser Electronics

Authorized Distributor

Click to View Pricing, Inventory, Delivery & Lifecycle Information:

[Honeywell:](#)

[6PA34](#)