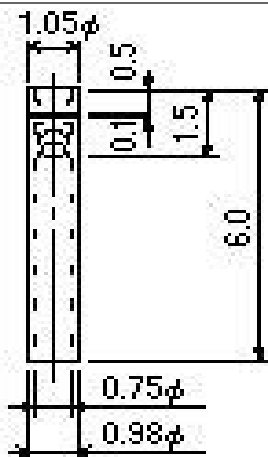




PD Series

[all categories](#) > [through hole technology](#) > [socket pin](#) > [pd series](#) > PD-14



Socket Pin - PD-14

- Confirm applicable male pin diameter before use.
- Cable can be bond by pressure.
- Contact Resistance.....10m ohm or less
- Depth (mm).....any
- Finish.....
 - Contact part..Au p
 - Body part..Au p
- Material....
 - Contact part..Beryllium copper
 - Body part..Brass
- Mating/unmating (durability)....100 or more
- Mating/unmating Forces (g or more)....20
- Rated Current (A)....1
- Rated Voltage....125V AC, DC
- Recommended Male Pin Diameter (phi mm)....0.35 to 0.5
- Recommended Through-hole Diameter (phi mm)....1.0
- Temperature Range (Degrees Celcius)....-40 to +125

[Save To Favorites](#)
[Download Catalog](#)

>> [request quote / information](#) | >> [download specs](#)