

Speed Exhaust Controller Elbow Type/Tee Type

Quick Exhaust

Series **ASV**

Features

- Three functions from a single component
- Minimises installation time and cost
- Accepts nylon and polyurethane tubing
- Wide variety of sizes M3 to 1/2
- Integral One Touch fitting - 4mm to 12mm
- Excellent control characteristics
- Compact design



Elbow type



Tee type

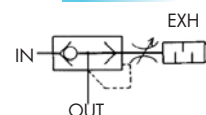
Applicable tubing O.D.: Metric Size

Specifications

Series	ASV120F	ASV220F	ASV310F, 410F	ASV510F
Proof pressure	1.5MPa			
Max. operating pressure	1MPa			
Min. operating pressure	0.1MPa			
Ambient and fluid temperature	-5 to 60°C (With no condensation)			
Number of needle rotations	10 rotations	8 rotations	12 rotations	15 rotations
Applicable tubing material ^{Note 1)}	Nylon, Soft nylon, Polyurethane			
Option	Hexagon lock nut		With spatter cover, Hexagon lock nut	

Note 1) Pay attention to the maximum operating pressure when soft nylon, polyurethane is used.

JIS Symbol



Model

Model	Port size	Applicable tubing O.D.				
		4	6	8	10	12
ASV120F-M3	M3	●				
ASV220F-M5	M5	●	●			
ASV310F-01	R1/8		●	●		
ASV310F-02	R1/4		●	●		
ASV410F-01	R1/8			●	●	
ASV410F-02	R1/4			●	●	
ASV410F-03	R3/8			●	●	
ASV510F-02	R1/4				●	●
ASV510F-03	R3/8				●	●
ASV510F-04	R1/2				●	●

Integration of a quick exhaust valve and an exhaust restrictor.
Permits high-speed cylinder operation.

Applicable tubing O.D. mm	Connection thread	Model
		Elbow type
4	M3	ASV120F-M3-04
	M5	ASV220F-M5-04
6	M5	ASV220F-M5-06
Applicable tubing O.D. mm	Connection thread	Model
		Tee type
6	R1/8	ASV310F-01-06S
	R1/4	-02-06S
8	R1/8	ASV310F-01-08S
	R1/4	-02-08S
	R1/8	ASV410F-01-08S

Applicable tubing O.D. mm	Connection thread	Model
		Tee type
8	R1/4	ASV410F-02-08S
	R3/8	-03-08S
10	R1/8	ASV410F-01-10S
	R1/4	-02-10S
	R3/8	-03-10S
	R1/2	-04-10S
12	R1/4	ASV510F-02-12S
	R3/8	-03-12S
	R1/2	-04-12S

How to Order

ASV **3** **1** **0** F-**01**-**06** S

Model

1	Union tee
2	Elbow ^{Note 1)}

Note 1) Only M3 and M5 for the elbow type.

Body size

1	M3 standard
2	M5 standard
3	1/8 standard
4	1/4 standard
5	3/8 standard

Port size

M3	M3
M5	M5
01	R1/8
02	R1/4
03	R3/8
04	R1/2

Applicable tubing O.D.

04	ø4
06	ø6
08	ø8
10	ø10
12	ø12

Lock nut configuration

Nil	Standard (Round)
K	Hexagon type

Sealant

Symbol	Sealant	Applicable model
Nil	Without sealant	ASV120F, 220F
S	With sealant	ASV310F, 410F, 510F



CAD CD-ROM AVAILABLE


CATALOGUE **E51-B** AVAILABLE


PDF AVAILABLE ONLINE