

### Features:

- Low insertion force (1 oz. average per pin).
- Screw-machined terminals with multiple finger contacts for reliability.
- Closed bottom terminal for 100% anti-wicking of solder.
- Tapered entry for ease of insertion.
- Custom designs available.

### Specifications:

#### Terminals:

Brass - Copper Alloy  
(C36000) ASTM-B-16

#### Contacts:

Beryllium Copper  
(C17200) ASTM-B-194

#### Solder Preform:

Standard: 63Sn/37Pb  
Lead-free: 95.5Sn/4.0Ag/0.5Cu

#### Plating:

G - Gold over Nickel  
M - Matte Tin over Nickel  
T - Tin/Lead over Nickel

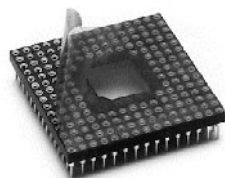
Gold per ASTM-B-488  
Matte Tin per ASTM545-97  
Tin/Lead per MIL-P-81728  
Nickel per QQ-N-290

### Table of Models

	<b>Description:</b> Peel-A-Way® (KIS) <b>Material:</b> Polyimide Film <b>Index:</b> -269°C to 400°C (-452°F to 752°F)	
	<b>Description:</b> FR-4 (FIS) <b>Material:</b> FR-4 Fiberglass Epoxy Board <b>Index:</b> -40°C to 140°C (-40°F to 284°F)	
	<b>Description:</b> Molded (RIS) <b>Mat'l:</b> High Temp. Liquid Crystal Polymer (LCP) <b>Index:</b> -40°C to 260°C (-40°F to 500°F)	

RIS replaces HCIS, HCS, CIS, and CS.

### Options



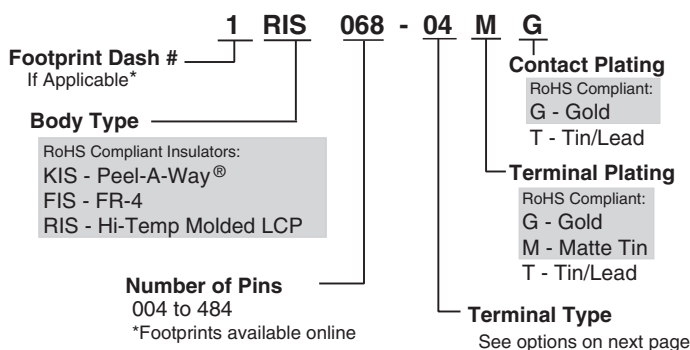
#### Tape Seal - add 3M to end of part number

- Removable tape seal protects plated contact in harsh environments
- Sealed socket will not allow dirt and other contaminants to enter socket chamber and become entrapped behind contact fingers
- Spray flux without contaminating contact area

#### Material

Silicone Backed Polyimide Film, -74°C to 260°C (-100°F to 500°F)  
Intermittent to 371°C (700°F)

### How To Order



Note: Terminals plated with Matte Tin are available only with Gold plated contacts.  
Quick-Turn delivery is not available on products with Matte Tin plating.

Products shown covered by patents issued and/or pending. Specifications subject to change without notice.

inch/(mm)



5 Energy Way, West Warwick, RI 02893 USA  
Tel: 800.424.9850 | 401.823.5200  
Fax: 401.823.8723  
info@advanced.com | www.advanced.com  
Catalog 16 rev. Sept. 07

# Low Insertion Force PGA Sockets .100/(2.54mm) Standard Grid



## Standard Quick-Turn Terminals

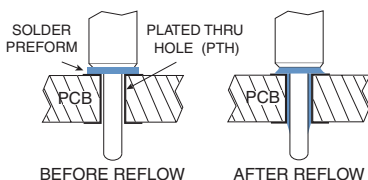
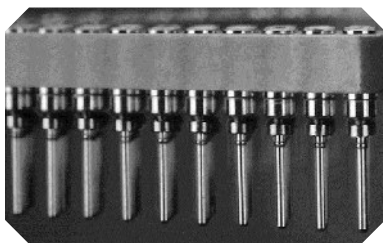
Additional standard and custom terminals available.  
See Terminals section or consult factory.

Type -04	Type -51	Type -01	Type -49
.157/(3.99) Hole Depth 		Molded or FR-4 only 	
Type -33	Type -50	Type -85	Type -176
Peel-A-Way® only 	Peel-A-Way® only 	Peel-A-Way® only 	Peel-A-Way® only 
Type -210	Type -29		
Peel-A-Way® only 	Molded or FR-4 only (Not Quick-Turn) 		

## Solder Preform Terminals

Tin/Lead: Type -150 Lead-free: Type -811	Tin/Lead: Type -151 Lead-free: Type -812	Tin/Lead: Type -111 Lead-free: Type -810
		Peel-A-Way® only 

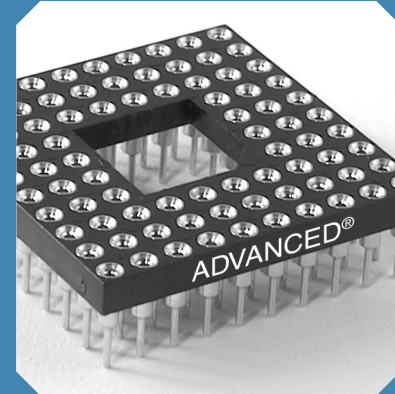
## Intrusive Reflow Application



## Solder Preform Terminals

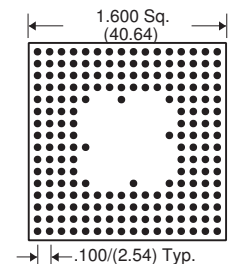
- Combines the labor of socket loading and solder application into one operation.
- Eliminates the use of solder paste and screening operation.
- Eliminates solder bridges and/or solder shorts due to excess solder.
- Ensures a reliable solder joint with controlled solder volume.
- Ideal for surface mount and mixed technology applications.
- For custom solder preform terminal applications consult factory.

# PGA Sockets



## Footprints:

200 Pins  
Footprint Number 200-1



16 x 16 rows

- Full grid insulators loaded to your specific footprint.
- Open centers available upon request (consult factory).
- Hundreds of footprints available online.
- Use our online Build-A-Part feature or download a Footprints Booklet in PDF format.

## Available Online:

- Extraction Tools
- RoHS Qualification Test Report
- CAD Drawings



5 Energy Way, West Warwick, RI 02893 USA  
Tel: 800.424.9850 | 401.823.5200  
Fax: 401.823.8723  
info@advanced.com | www.advanced.com  
Catalog 16 rev. Sept. 07

inch/(mm)

Products shown covered by patents issued and/or pending. Specifications subject to change without notice.