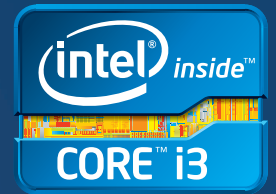
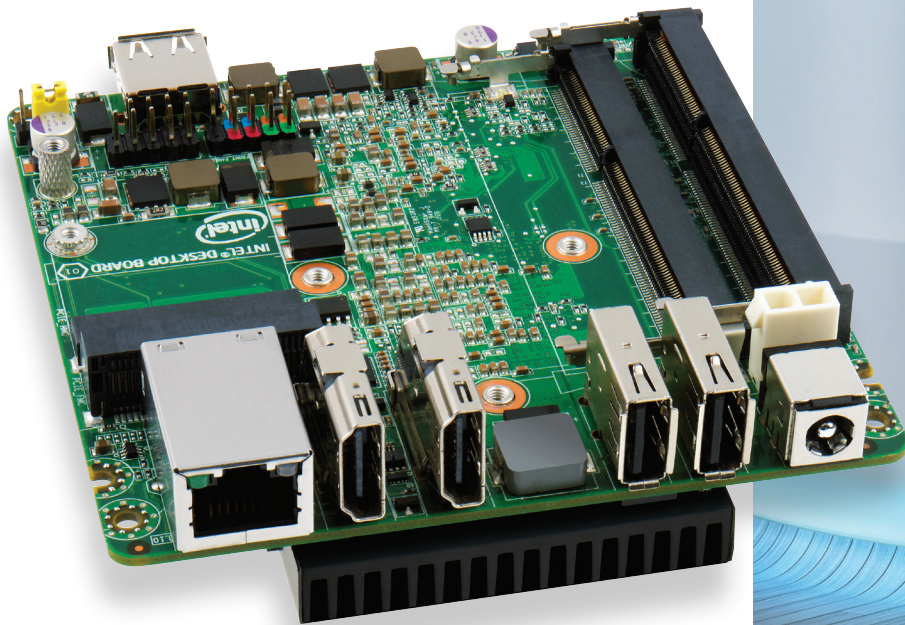


# Intel® NUC D33217GKE

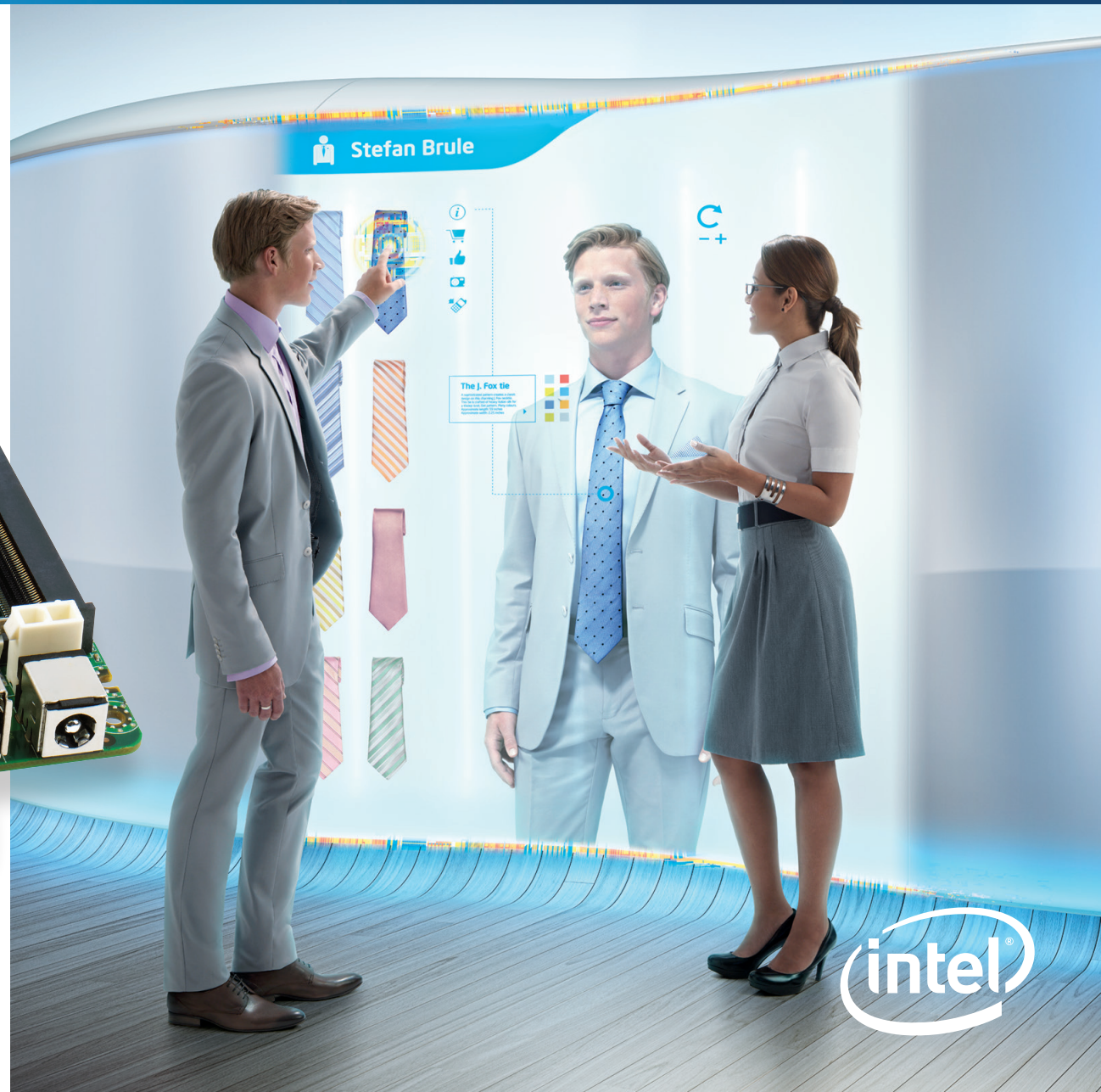


## NUC by Intel®

- Superior processing and graphics
- Stunningly small form factor
- Advanced Technologies



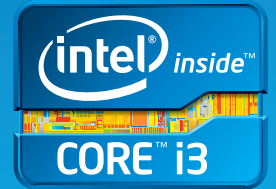
PRODUCT BRIEF





NUC by Intel®

with Intel® NUC D33217GKE



#### Think you know what small can do? Think again.

No more compromising between performance, profile, and price. The NUC is a tiny 4"×4"×2" computing device with the power of the 3<sup>rd</sup> generation Intel® Core™ i3 processor. Its lower power consumption enables innovative system designs and energy-efficient applications in places like digital signage, home entertainment, and portable uses.

#### Superior processing and graphics

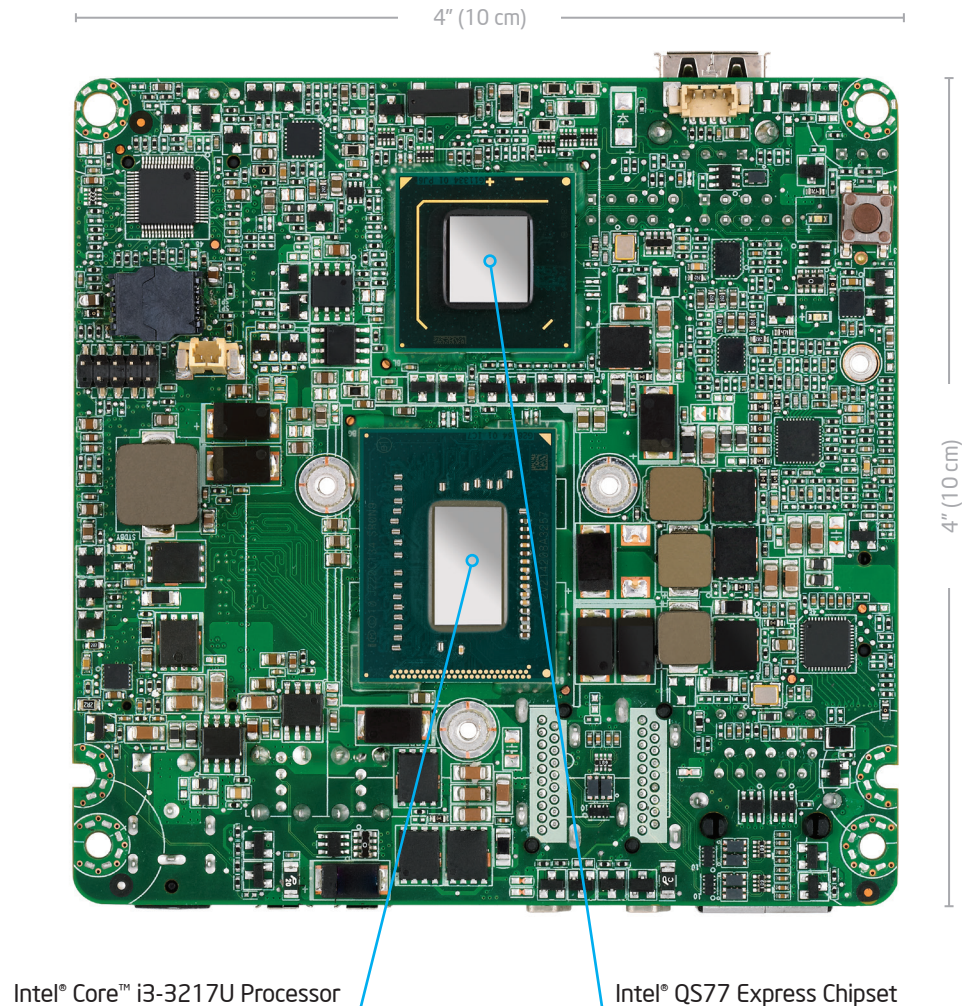
Visibly smart graphics using the 3<sup>rd</sup> generation Intel® Core™ i3-3217U processor deliver amazing performance and visually stunning graphics.

#### Stunningly small form factor

The 4"×4"×2" form factor unlocks a world of potential design applications, from digital signage and kiosks to portable innovations.

#### Advanced Technologies

The NUC features two SO-DIMM sockets for expandability upto 16 GB of memory, two PCIe\* mini-card connectors for flexible support of wireless and SSD configurations, BIOS vault technology, fast boot and the Intel® Visual BIOS. The NUC also supports Intel® Anti-Theft™ Technology providing hardware intelligence designed to protect your device and its data if its lost or stolen.



Intel® Core™ i3-3217U Processor

Intel® QS77 Express Chipset

# Intel® NUC D33217GKE

## Features and Benefits



1 × USB 2.0 connector on the front panel

2 × Internal USB 2.0 via 2 × 5 header

2 × PCIe mini slots  
(1 × half-length & 1 × full/half-length)

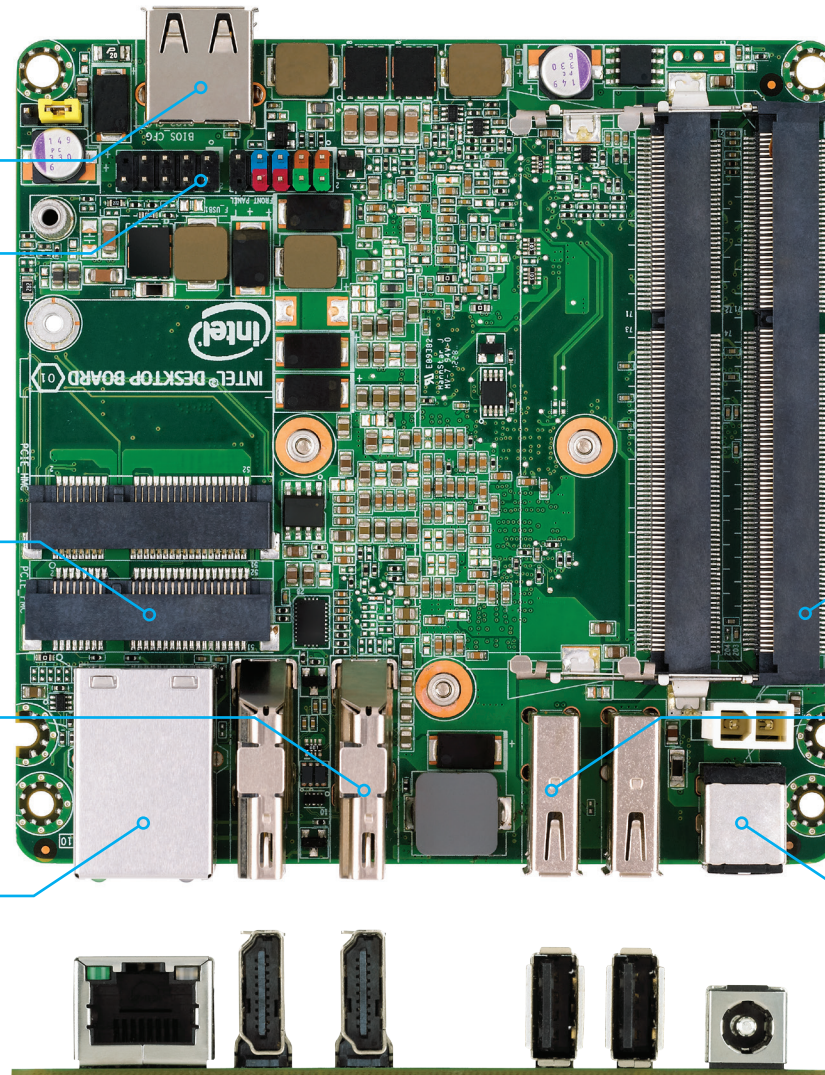
Dual HDMI connectors supporting  
dual independent display

Intel® 10/100/1000 Network Connection

Dual channel SODIMM DDR3  
1333/1600 MHz

2 × USB 2.0 connectors on back panel

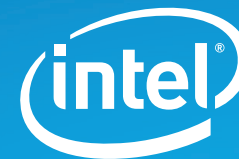
19V DC Power Input (external power supply)





# Intel® NUC D33217GKE

## Technical Specifications



### PROCESSOR

#### Processor Support

- Intel® Core™ i3 3217U Processor (1.8 GHz, Dual Core processor with 3 MB smart cache)
- Supports Intel® 64 architecture<sup>3</sup>

### CHIPSET

- Intel® QS77 Express Chipset

### GRAPHICS

- Dual HDMI Ports supporting HDMI 1.4a with dual independent display capability

### PERIPHERAL CONNECTIVITY

- Integrated Intel 10/100/1000 Network Connection
- Three Hi-Speed USB 2.0 ports (two back panel ports and one front panel port)

### EXPANSION CAPABILITIES<sup>2</sup>

- Two USB 2.0 ports via internal 2 × 5 header
- One full length mini-PCIe slot supporting mSATA capability
- One half length mini-PCIe slot with dual USB 2.0 ports routed

### SYSTEM BIOS

- Intel® Visual Bios
- 64 Mb Flash EEPROM with Intel® Platform Innovation Framework for EFI Plug and Play
- Advanced configuration and power interface V3.0b, SMBIOS2.5
- Intel® Express BIOS update support
- Fast Boot BIOS - Optimized POST for almost instant-on access to PC from power on**

### SYSTEM MEMORY<sup>1</sup>

#### Memory Capacity

- Dual-channel DDR3 with two connectors for 1333/1600 MHz memory support (16 GB max)

#### Memory Voltage

- 1.5V and 1.35V

### HARDWARE MANAGEMENT FEATURES

- Processor fan speed control
- Voltage and temperature sensing
- Fan sensor inputs used to monitor fan activity
- ACPI-compliant power management control

### INTEL® PRO 10/100/1000 NETWORK CONNECTION

- Low-power design

### AUDIO

- Intel® High Definition Audio (Intel HD Audio) via two HDMI 1.4a outputs supporting 8 channel (7.1) digital audio

### INDICATORS AND CONTROLS

- HDD LED, Power LED
- Power on/off

### MECHANICAL

#### Board Size

- 4"×4" (101.6 mm×101.6 mm)

#### Baseboard Power Requirements

- DC Power 19V, 65 Watt

### ENVIRONMENT

#### Operating Temperature

- 0°C to +50°C

#### Storage Temperature

- 20°C to +70°C

### COMPLIANCE WITH REGULATIONS AND STANDARDS

#### Safety Regulations

- UL/CSA 60950-1
- EN 60950-1
- IEC 60950-1

#### EMC Class B Regulations

- CISPR 22
- CISPR 24
- FCC 47 CFR Part 15, Subpart B
- ICES-003
- EN 55022
- EN 55024
- EN 61000-3-2
- EN 61000-3-3
- IEC/EN 61000-4 Series
- VCCI V-3
- KN-22
- KN-24
- CNS 13438

#### ENVIRONMENTAL COMPLIANCE

- Europe RoHS
- China RoHS

<sup>1</sup> WARNING: Altering PC memory frequency, voltage and/or latency may: (i) reduce system stability and useful life of the system, memory and processor; (ii) cause the processor and other system components to fail; (iii) cause reductions in system performance; (iv) cause additional heat or other damage; and (v) affect system data integrity. Intel has not tested, and does not warrant, the operation of the memory beyond its specifications. Intel assumes no responsibility that the memory, including if used with altered clock frequencies and/or voltages, will be fit for any particular purpose. Check with memory manufacturer for warranty and additional details.

<sup>2</sup> System resources and hardware (such as PCI and PCI Express\*) require physical memory address locations that can reduce available addressable system memory. This could result in a reduction of as much as 1 GB or more of physical addressable memory being available to the operating system and applications, depending on the system configuration and operating system.

<sup>3</sup> 64-bit computing on Intel® architecture requires a computer system with a processor, chipset, BIOS, operating system, device drivers, and applications enabled for Intel® 64 architecture. Processors will not operate (including 32-bit operation) without an Intel 64 architecture-enabled BIOS. Performance will vary depending on your hardware and software configurations. See <http://developer.intel.com/technology/intel64/index.htm> for more information.

INFORMATION IN THIS DOCUMENT IS PROVIDED IN CONNECTION WITH INTEL® PRODUCTS. NO LICENSE, EXPRESS OR IMPLIED, BY ESTOPPEL OR OTHERWISE, TO ANY INTELLECTUAL PROPERTY RIGHTS IS GRANTED BY THIS DOCUMENT. EXCEPT AS PROVIDED IN INTEL'S TERMS AND CONDITIONS OF SALE FOR SUCH PRODUCTS, INTEL ASSUMES NO LIABILITY WHATSOEVER, AND INTEL DISCLAIMS ANY EXPRESS OR IMPLIED WARRANTY, RELATING TO SALE AND/OR USE OF INTEL PRODUCTS INCLUDING LIABILITY OR WARRANTIES RELATING TO FITNESS FOR A PARTICULAR PURPOSE, MERCHANTABILITY, OR INFRINGEMENT OF ANY PATENT, COPYRIGHT, OR OTHER INTELLECTUAL PROPERTY RIGHT.

Intel products are not intended for use in medical, life-saving, or life-sustaining applications. Intel may make changes to specifications and product descriptions at any time, without notice.

All products, dates, and figures specified are preliminary based on current expectations, and are subject to change without notice. Availability in different channels may vary.

Actual Intel® NUC may differ from the image shown.

Requires an Intel® WiDi enabled system and Intel WiDi enabled receiver device. 1080p and Blu-ray\* or other protected content playback only available on 2<sup>nd</sup> or 3<sup>rd</sup> gen Intel® Core™ processor-based PCs with built-in visuals enabled, a compatible receiver device and media player, and supporting Intel WiDi software and graphics driver installed. Consult your PC manufacturer. For more information, see [www.intel.com/go/widi](http://www.intel.com/go/widi).

Intel, the Intel logo, Intel Core, Pentium, and Celeron are trademarks of Intel Corporation in the U.S. and other countries.

\* Other names and brands may be claimed as the property of others.

Copyright © 2013 Intel Corporation. All rights reserved.

1113/JMD/HBD/PDF 328150-002US

For ordering information, visit:  
[www.intel.com](http://www.intel.com)

For the most current product information, visit:  
[www.intel.com/nextunitofcomputing](http://www.intel.com/nextunitofcomputing)