

# MICRO SWITCH

FREEPORT ILLINOIS, U.S.A  
A DIVISION OF HONEYWELL  
FED. MFG. CODE 91929

## SWITCH-BASIC

CATALOG LISTING

YA-1R2416-A42

ADF2800

CATALOG LISTING

YA-1R2416-A42

PAGE 1 OF 1

REPLACES X71572-YA

RELEASE NO. PR-11226

12SEP07

PSR

CHECK

09JAN06

RJ

CHECK

25 MAY 82

CEB

CHECK

19 MAY 82

KAG

FO-52848-A

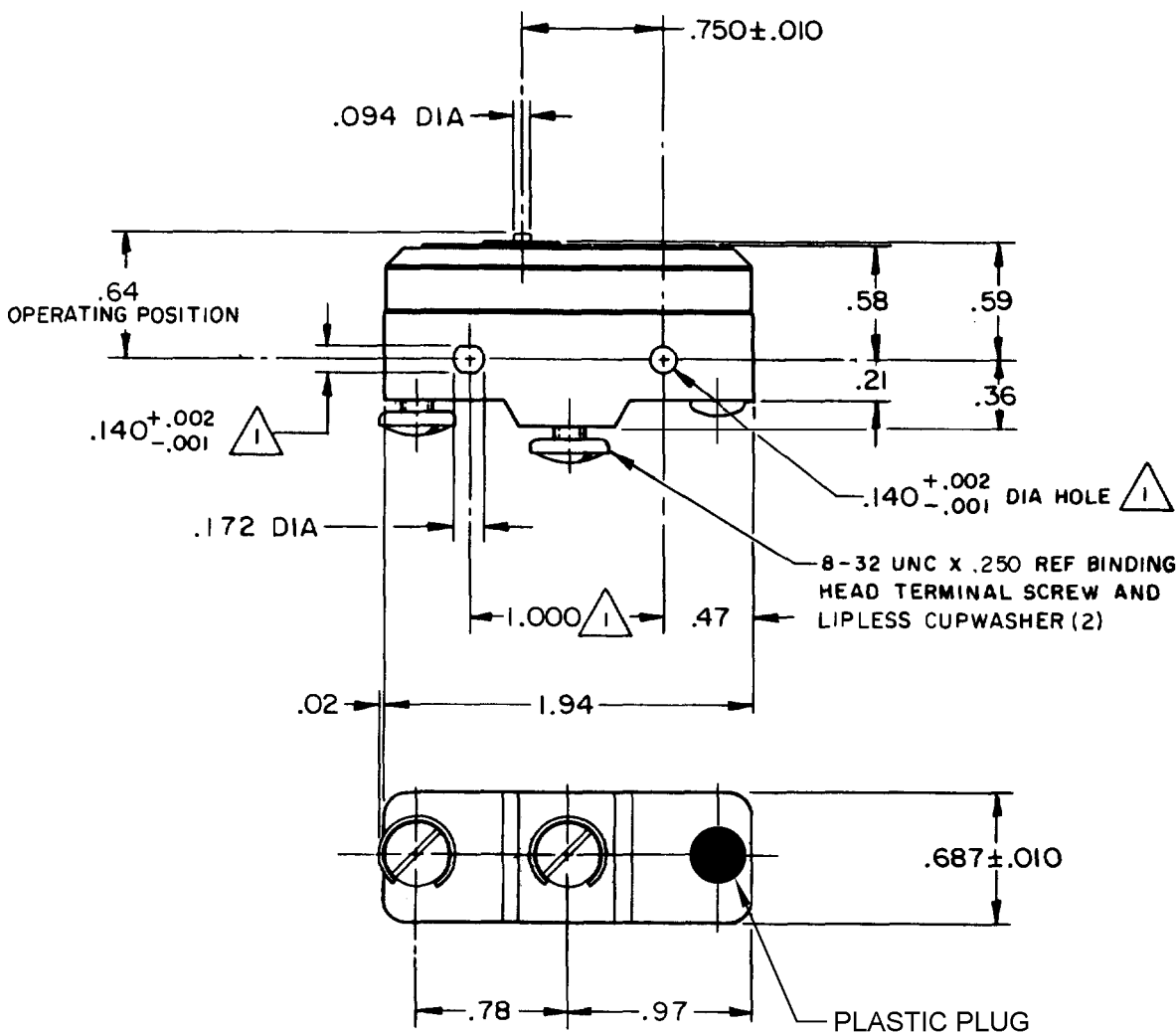
ISSUE

7

M

### REVISIONS

A	C051554	T SK	21 JULY 82
B	C0-77589	MAM	29 MAR 94
C	C093346	DLT	28 AUG 98
D	0000566	CSL	17 JUN 03
E	0017742	TSG	09 JAN 06
F	0033746	JA	12 SEP 07

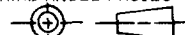


### NOTES

- MOUNTING HOLES WILL ACCEPT PINS OR SCREWS OF  $.139 \text{ MAX DIA}$  ON  $1.000 \pm .002$  CENTERS
- SWITCH TO WITHSTAND TEMPERATURE OF  $250^\circ \text{F}$

THIS DRAWING COVERS A PROPRIETARY ITEM AND IS THE PROPERTY OF MICRO SWITCH, A DIVISION OF HONEYWELL. THIS DRAWING IS NOT TO BE COPIED OR USED WITHOUT THE APPROVAL OF MICRO SWITCH.

THIRD ANGLE PROJECTION



### CHARACTERISTICS

OPERATING FORCE -----  $13-19 \text{ OZ}$   
DIFFERENTIAL FORCE -----  $1 \frac{1}{2}-6 \text{ OZ}$   
RELEASE FORCE -----  $10 \text{ OZ MIN}$   
DIFFERENTIAL TRAVEL -----  $.004-.006$   
OVERTRAVEL -----  $.010 \text{ MIN}$

### ELECTRICAL DATA

CONTACT ARRANGEMENT  
S P N O

L33 20A-125, 250 OR 480 VAC  
1HP-125 VAC; 2HP-250 VAC  
0.3A-125 VDC; 0.15A-250 VDC

L288  
L308  
L310  
L315



20(3)A 250V T85 5E4

SCALE FULL

DO NOT SCALE PRINT

TOLERANCES  
APPLY TO DESIGN UNITS. CONVERSIONS ARE ONLY FOR REFERENCE. UNLESS NOTED, TOLERANCES ARE  $\pm$

	DM.	TOL.	DM.	TOL.
	mm	mm/in	in	mm/in
NO PLACES	X	1/64	X	0.015
ONE PLACE	X,X	0.001	X,X	0.001
TWO PLACES	X,X,X	0.0001	X,X,X	0.0001
THREE PLACES	X,X,X,X	0.00001	X,X,X,X	0.00001

DESIGN UNITS ☐ SI METRIC ☒ US CUSTOMARY

WEIGHT .063 LB

RASTER

DRAWN

# Mouser Electronics

Authorized Distributor

Click to View Pricing, Inventory, Delivery & Lifecycle Information:

[Honeywell:](#)

[YA-1R2416-A42](#)