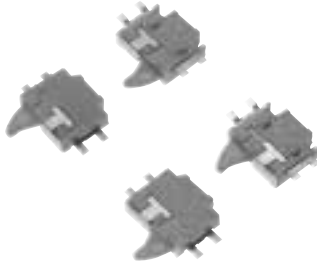


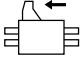
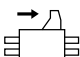
NAiS**IC CARD
DETECTION SWITCHES****FT (ABC1)
SWITCHES****FEATURES**

- Ultra-low profile 1.4 mm .055 inch
They allow products to be slimmer
- The original coil spring-activated mechanism yields a light operating force (max. 0.3N) and a high overtravel to facilitate installation.
- The coil spring serves as the contact and a high contact reliability is achieved by the more than adequate contact force and wiping effect.
- Detecting from vertical and horizontal directions is possible. The actuator is rotated by the rotary shaft in the body.
- 2 types of SMD terminal is available. The low-profile type is mounted by making square holes at the edges of the printed circuit boards, resulting in a low profile.

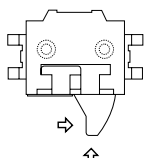
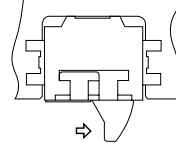
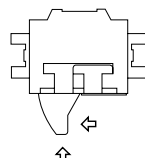
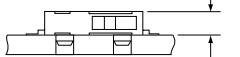
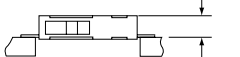
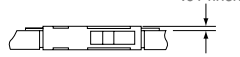
TYPICAL APPLICATIONS

- IC card and other electronic money-related products.
- CD-ROM drivers
- Cellular phones
- MD
- Video cameras
- Digital still camera
- Headphone stereo

PRODUCT TYPES

Detection direction	Packing style	Contact type	Standard type	Low Profile type	
				Standard embossed tape packing	Upside-down embossed tape packing
Right angle 	Embossed tape (3000 pcs/reel)	Gold-plated	ABC1111P61	ABC1121P61	ABC1121P161
Left angle 		Gold-plated	ABC1112P61	ABC1122P61	ABC1122P161

**CONTACT
ARRANGEMENT:
SPST-NO (1 Form A)****MOUNTING VIEW**

	Standard type	Low profile type	
		Standard embossed tape packing	Upside-down embossed tape packing
TOP VIEW			
Mounting part layout			

Note) * The mounting height of 0.35 mm .014 inch indicated by the asterisk applies when the standard embossed tape packages are used, that is to say, when the switches have been mounted using embossed tape packages on which the switches are encapsulated after their fronts and backs have been reversed.

ABC1

SPECIFICATIONS

1. Contact rating

Gold-plated	0.01 mA 5V DC to 10 mA 5V DC (resistive load)
-------------	---

2. Characteristics

Electrical life	Gold-plated Min. 10 ⁵ (0.01 mA 5V DC to 10 mA 5V DC contact opening 20 cpm)
Insulation resistance	Min. 100 MΩ (by 100V DC insulation resistance meter)
Dielectric strength	100 Vrms for 1 min. (Between uncontinuous terminals)
Contact resistance (initial)	Max. 3Ω (by voltage drop at 10 mA 5V DC)
Contact resistance	14.7 m/s ² 10 to 500Hz (Contact opening: max. 1 msec.)
Shock resistance	294 m/s ² (Contact opening: max. 1 msec.)
Allowable operating speed	30 to 300mm/s
Allowable operating frequency	60 times/min. (at no load)
Ambient temperature	-25 to 80°C -13 to 176°F Not freezing nor condensing

3. Operating characteristics

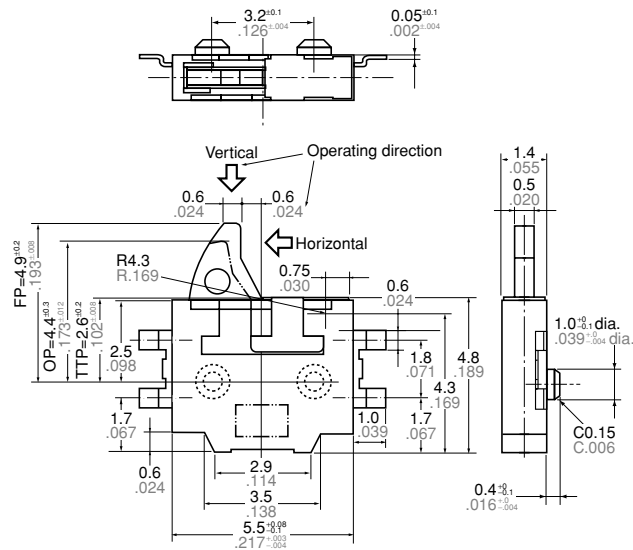
Item	Standard type	Low profile type
Free position (F.P.) (mm inch)	4.9 ± 0.2 .193±.008	7.1 ± 0.2 .280±.008
Operating position (O.P.) (mm inch)	4.4 ± 0.3 .173±.012	6.6 ± 0.3 .260±.012
Total travel position (T.T.P.) (mm inch)	2.6 ± 0.2 .102±.008	4.8 ± 0.2 .189±.008
Operating force, Max.	0.3N by 2.8 mm .110 inch from the center of the positioning projection	0.3N by 5.0 mm .197 inch from the bottom of the switch

DIMENSIONS

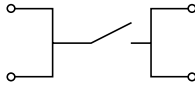
mm inch

1. Standard type

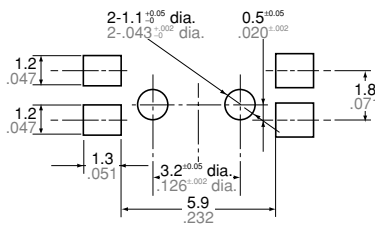
Right angle



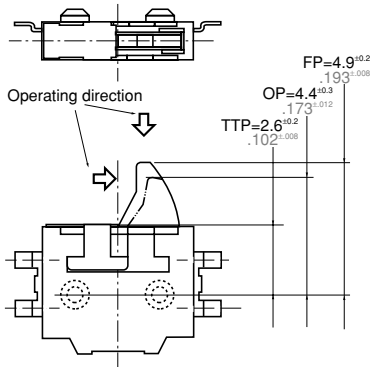
Circuit construction
SPST-NO (1 Form A)



PC board pattern



Left angle



Right angle

