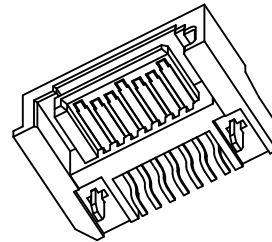
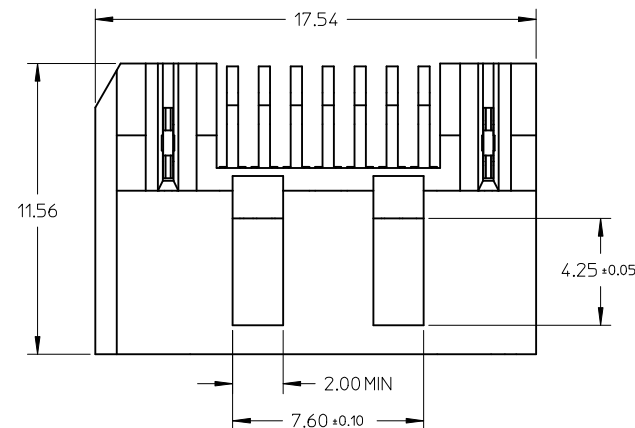
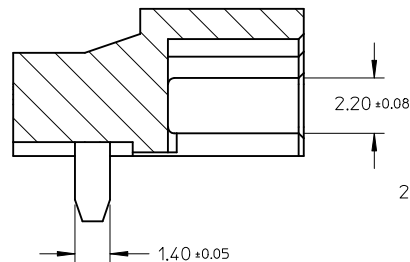
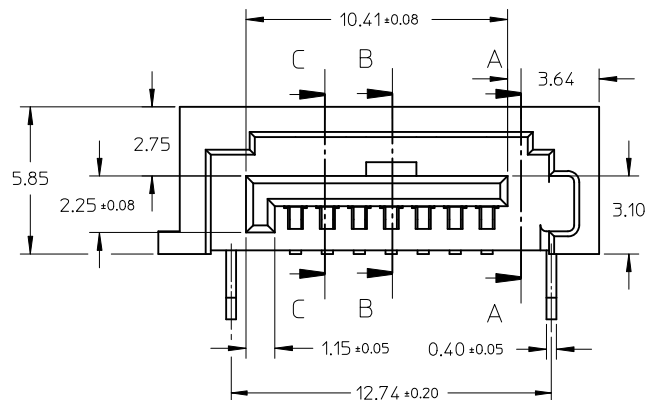


10 9 8 7 6 5 4 3 2 1

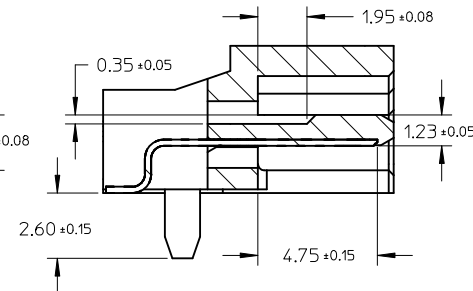


NOTES:

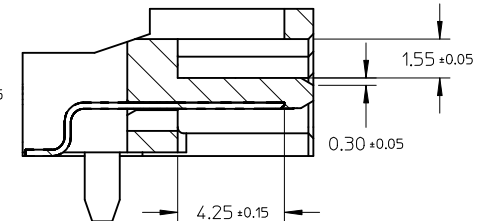
1. MATERIAL:
HOUSING: HIGH TEMPERATURE PLASTIC, GLASS FILLED, UL94V-0, COLOR: SEE CHART;
TERMINAL/PEG: COPPER ALLOY;
MYLAR: ADHESIVE TAPE.
2. TERMINAL AND PEG PLATING:
CONTACT AREA: GOLD PLATED ON 1.25 MICRONS MINIMUM NICKEL UNDER PLATE,
REFERRED TO PLATING TYPE LIST IN TABLE;
SOLDER AREA: 1.27 MICRONS PURE TIN PLATED ON 1.25 MICRONS
MINIMUM NICKEL UNDER PLATE, REFERRED TO REMARK IN TABLE.
3. PRODUCT SPECIFICATION REFER TO PS-67490-001.
4. MATING PART: 67489.
5. PRODUCT COMPLIANT TO RoHS DIRECTIVE 2002/95/EC AND ELV 2000/53/EC.



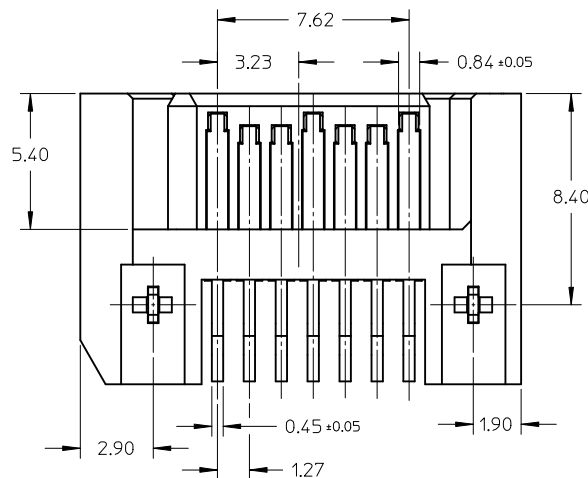
SECTION A-A



SECTION B-B

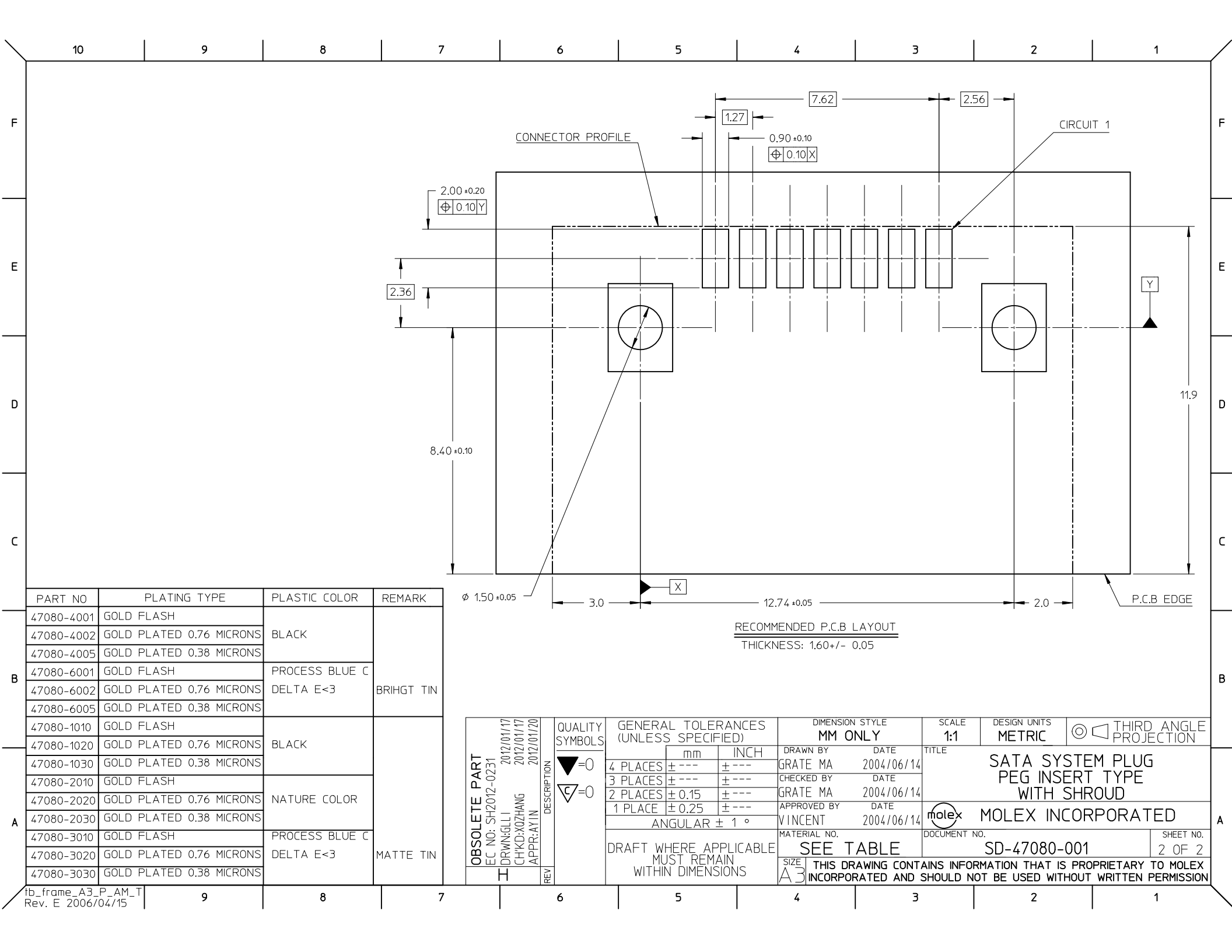


SECTION C-C



OBSOLETE PART EC NO: SH2012-0231 2012/01/17 DRW:GLL CHKD:XZFHANG 2012/01/17 APPR:AYIN 2012/01/20	DESCRIPTION	QUALITY SYMBOLS <div>▽=0</div> <div>◻=0</div>	GENERAL TOLERANCES (UNLESS SPECIFIED)		DIMENSION STYLE MM ONLY		SCALE 1:1	DESIGN UNITS METRIC	THIRD ANGLE PROJECTION			
				mm	INCH	DRAWN BY GRATE MA	DATE 2004/06/14	TITLE SATA SYSTEM PLUG PEG INSERT TYPE WITH SHROUD				
			4 PLACES	± ---	± ---	CHECKED BY	DATE					
			3 PLACES	± ---	± ---	GRATE MA	2004/06/14	MOLEX INCORPORATED				
			2 PLACES	± 0.15	± ---	APPROVED BY	DATE					
			1 PLACE	± 0.25	± ---	VINCENT	2004/06/14	DOCUMENT NO. SD-47080-001				
			ANGULAR ± 1 °			MATERIAL NO.						
			DRAFT WHERE APPLICABLE MUST REMAIN WITHIN DIMENSIONS			SEE SHEET 2						
			THIS DRAWING CONTAINS INFORMATION THAT IS PROPRIETARY TO MOLEX INCORPORATED AND SHOULD NOT BE USED WITHOUT WRITTEN PERMISSION									

9 8 7 6 5 4 3 2 1



F

E

D

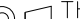
C

B

A

fb_frame_A3_P_AM_T
Rev. E 2006/04/15

PART NO	PLATING TYPE	PLASTIC COLOR	REMARK
47080-4001	GOLD FLASH	BLACK	BRIHGT TIN
47080-4002	GOLD PLATED 0.76 MICRONS		
47080-4005	GOLD PLATED 0.38 MICRONS		
47080-6001	GOLD FLASH	PROCESS BLUE C DELTA E<3	BRIHGT TIN
47080-6002	GOLD PLATED 0.76 MICRONS		
47080-6005	GOLD PLATED 0.38 MICRONS		
47080-1010	GOLD FLASH	BLACK	
47080-1020	GOLD PLATED 0.76 MICRONS		
47080-1030	GOLD PLATED 0.38 MICRONS		
47080-2010	GOLD FLASH	NATURE COLOR	
47080-2020	GOLD PLATED 0.76 MICRONS		
47080-2030	GOLD PLATED 0.38 MICRONS		
47080-3010	GOLD FLASH	PROCESS BLUE C DELTA E<3	MATTE TIN
47080-3020	GOLD PLATED 0.76 MICRONS		
47080-3030	GOLD PLATED 0.38 MICRONS		

OBSOLETE PART EC NO: SH2012-0231 DRW:GLL1 CHKD:XOZHANG APPR:AYIN REV	2012/01/17 2012/01/17 2012/01/20	DESCRIPTION	QUALITY SYMBOLS ▽=0 ▽=0	GENERAL TOLERANCES (UNLESS SPECIFIED)		DIMENSION STYLE MM ONLY		SCALE 1:1	DESIGN UNITS METRIC	 THIRD ANGLE PROJECTION	
					mm	INCH	DRAWN BY GRATE MA	DATE 2004/06/14	TITLE SATA SYSTEM PLUG PEG INSERT TYPE WITH SHROUD		
				4 PLACES	± ---	± ---	CHECKED BY	DATE			
				3 PLACES	± ---	± ---	GRATE MA	2004/06/14	MOLEX INCORPORATED		
				2 PLACES	± 0.15	± ---	APPROVED BY	DATE			
				1 PLACE	± 0.25	± ---	VINCENT	2004/06/14	SD-47080-001		
				ANGULAR ± 1 °			MATERIAL NO.	DOCUMENT NO.			SHEET NO.
				DRAFT WHERE APPLICABLE MUST REMAIN WITHIN DIMENSIONS			SEE TABLE		2 OF 2		
				SIZE A3							THIS DRAWING CONTAINS INFORMATION THAT IS PROPRIETARY TO MOLEX INCORPORATED AND SHOULD NOT BE USED WITHOUT WRITTEN PERMISSION

Mouser Electronics

Authorized Distributor

Click to View Pricing, Inventory, Delivery & Lifecycle Information:

Molex:

[47080-4005 BULK](#)