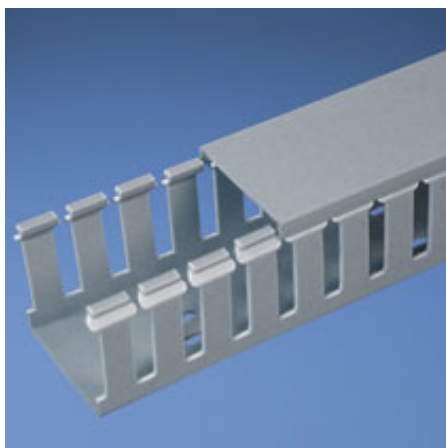




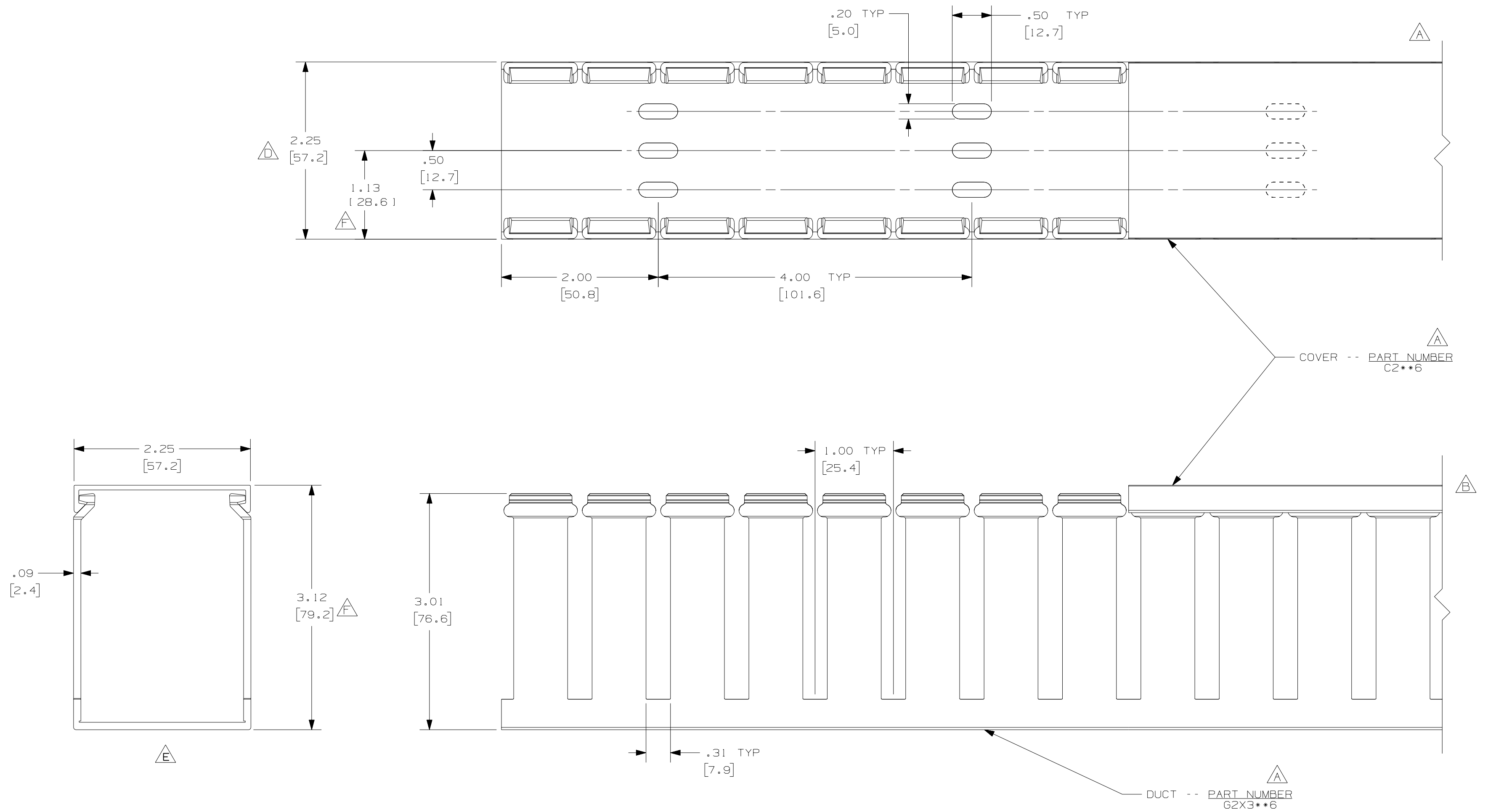
G2X3LG6



- Choose from 36 sizes of *PANDUIT®* Type G Wiring Duct from 0.5 "x 0.5" up to 6.0" x 4.0" in popular colors. Used for general purpose control panel wiring and to route and protect wiring in communication closets. The non-slip cover conceals all wiring and is easy to install. The duct and cover form a flush sidewall providing increased capacity and improved aesthetics.
- **Specifications**
 - Made of lead-free PVC
 - UL Recognized continuous use temperature: 122 °F (50°C)
 - UL94 Flammability Rating of V-0
 - Conforms with NFPA 79-2002 section 14.3.1 requirement for flame retardant material
 - Provided with mounting holes
- **Features and Benefits**
 - Wide finger/slot design provides greater sidewall rigidity and can be used with a wide range of wire bundle sizes
 - *PANDUIT®* exclusive rounded edges protects hands and wiring/cabling from abrasion
 - Non-slip cover stays in place during shipment, vibration and when in vertical orientation, eliminating rework
 - Flush cover design holds 10-12% more wires than traditional duct designs
 - Double scoreline allows quick modification for larger cabling bundles saving installation time leading to a lower installed cost
 - Specially formulated lead-free material eliminates health concerns associated with PVC that contains lead
 - Restricted slot design retains wire in slot for fast, easy wire installation or removal
- Base and cover sold separately.

✦ Part Number	G2X3LG6
✦ RoHS Compliancy Status	Compliant
✦ Part Description	Wide finger, slotted wiring duct.
✦ Material	Lead-Free PVC
✦ Color	Light Gray
✦ CSA Certified	Yes
✦ UL Recognized (File No. E147128)	Yes
✦ Length (ft.)	6
✦ CE Marking	Yes
✦ Duct Size W x H (In.)	2.25 x 3.12
✦ Duct Size W x H (mm)	57.2 x 79.2
✦ Mounting Method	Standard Mounting Holes
✦ Pricing Description	Slotted Duct, PVC, 50.8mm X 76.2mm X 6', Light Grey
✦ Slot Width (In.)	.31
✦ Slot Width (mm)	7.9

■ Cover Part Number	C2LG6
■ Min. Order UOM	FT
■ Min. Order Qty.	6
■ BOM Qty. (# of Pkgs.)	



A G

NOTES :

1. ALL DIMENSIONS ARE REFERENCE ONLY.
2. DIMENSIONS IN PARENTHESIS ARE METRIC.
3. THE * * DENOTE COLOR.
4. DUCT AND COVER ARE AVAILABLE IN 6 FT (1828.8) LENGTHS.

					<div style="text-align: right;"> D:\10000000-10000000 <div style="border: 1px solid black; padding: 5px; display: inline-block;"> <h1 style="margin: 0;">PANDUIT</h1> <div style="text-align: right; font-size: small;">CORP., TINLEY PARK, ILLINOIS</div> </div> </div>			
--	-----	---	---	G. ADDED LENGTH NOTE F. CORRECTED DIMENSION	<div style="text-align: center;"> <h2 style="margin: 0;">WIRING DUCT - TYPE G DUCT WITH COVER</h2> <div style="text-align: center; font-size: 2em; margin: 5px 0;">2 X 3</div> <h3 style="margin: 0;">MARKETING DRAWING</h3> </div>			
2	7/6/07	JCST	MBE	E. DELETED DIMENSION D. ADDED DIMENSION				
--	-----	---	---	C. CHANGED DRAWING SIZE	<div style="display: flex; justify-content: space-between;"> <div style="width: 30%;"> DRAWN BY JCST </div> <div style="width: 30%;"> MAT'L: PVC </div> <div style="width: 30%;"> SCALE FULL </div> </div> <div style="display: flex; justify-content: space-between; margin-top: 10px;"> <div style="width: 60%;"> DATE 3/5/03 </div> <div style="width: 35%;"> DRAWING NO. 36897 - 706 </div> <div style="width: 5%; text-align: center;"> DWG C </div> </div> <div style="display: flex; justify-content: space-between; margin-top: 10px;"> <div style="width: 60%;"> CHECKED BY JGG </div> <div style="width: 35%;"> SIZE C </div> <div style="width: 5%; text-align: center;"> DWG C </div> </div>			
1	5/6/04	JCST	MBE	B. CHANGED VIEW A. ADDED TOP VIEW, NOTES, AND LABELS				
R	3/5/03	JCST	JGG	DRAWING RELEASED				
REV	DATE	BY	CHK	DESCRIPTION				