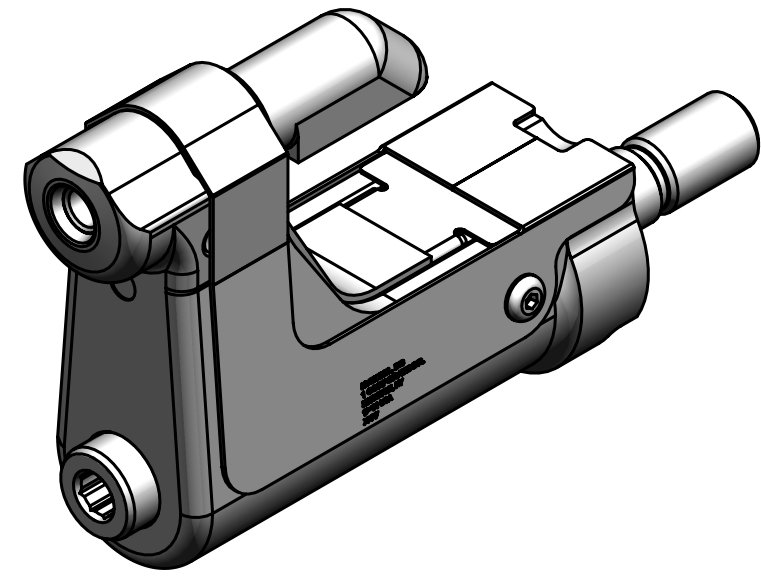
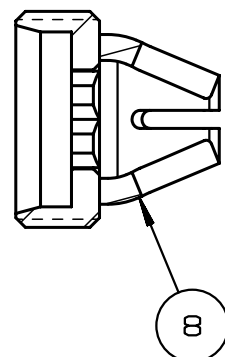


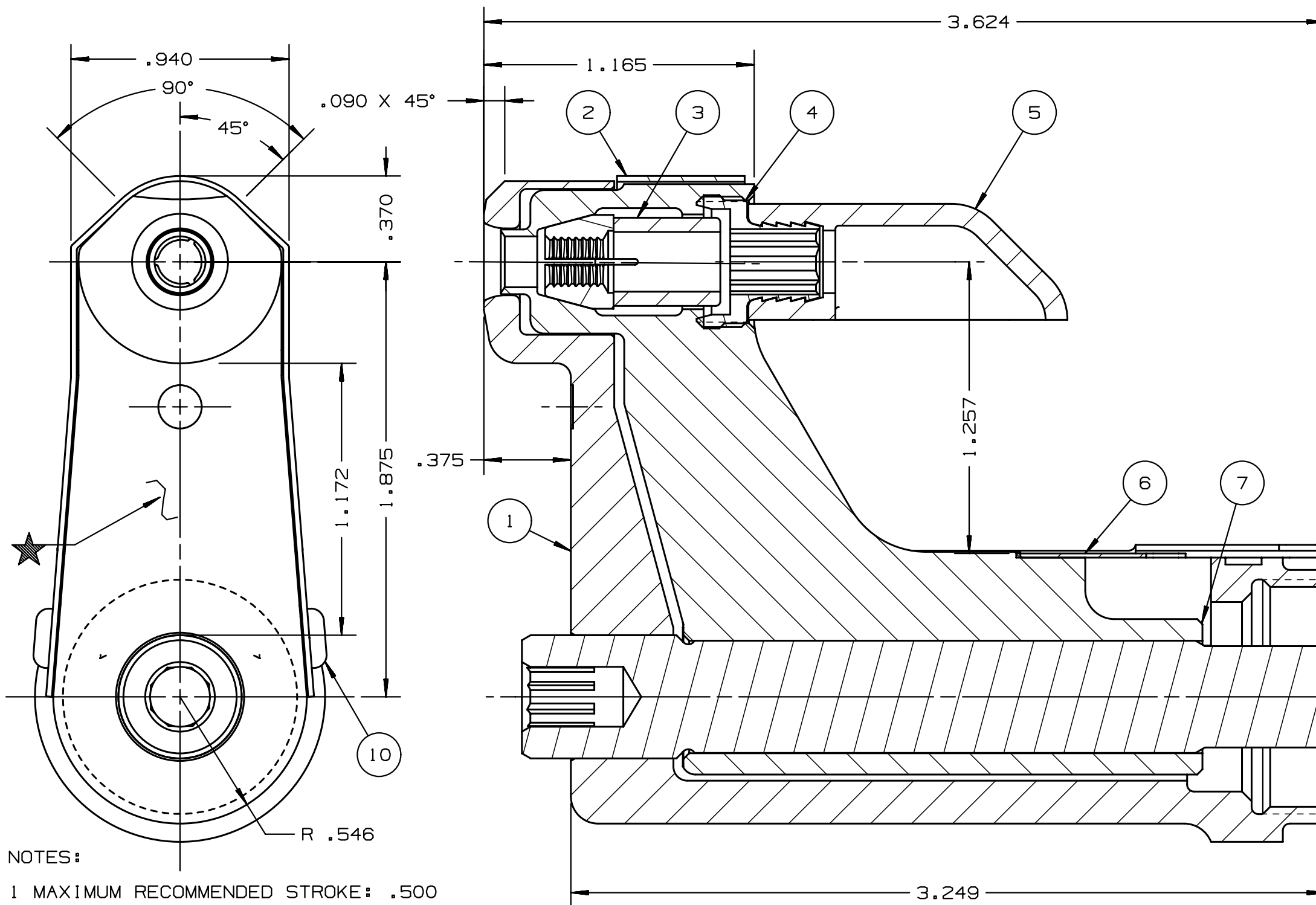
- NOTES:
- 1 MAXIMUM RECOMMENDED STROKE: .500
  - 2 FOR USE WITH THE 225/245 TOOL, USE ATTACHMENT P/N 119400-1 AND STROKE LIMITER 118362
  - 3 FOR USE WITH 2500 TOOL, USE ATTACHMENT P/N 119400-1 AND STROKE LIMITER KIT 119888
  - 4 FOR OTHER TOOLS AND/OR OTHER TOOL AND STROKE COMBINATIONS, CONSULT ENGINEERING DEPARTMENT
  - 5 SHIP WITH STOP 126747
  - 6 SHIP WITH DEFLECTOR 126748-2
  - 7 SHIP WITH (2) .030 SHIMS 128290 REFERENCE PB563 FOR PROPER USE



REV	DESCRIPTION	DET	DATE
E	UPDATED DRAWING BORDER, 129799 WAS 128641, ADDED 128488 TO B.O.M.	NDG	02/01/11
F	ITEM 3, 130055 WAS 127191	EL	11/14/11
G	130322-1 WAS 126746; 130326-1 WAS 126745; ADDED 508511; ADDED VIEW; ADDED .375 & 1.172 DIMS	HKS	6/13/13

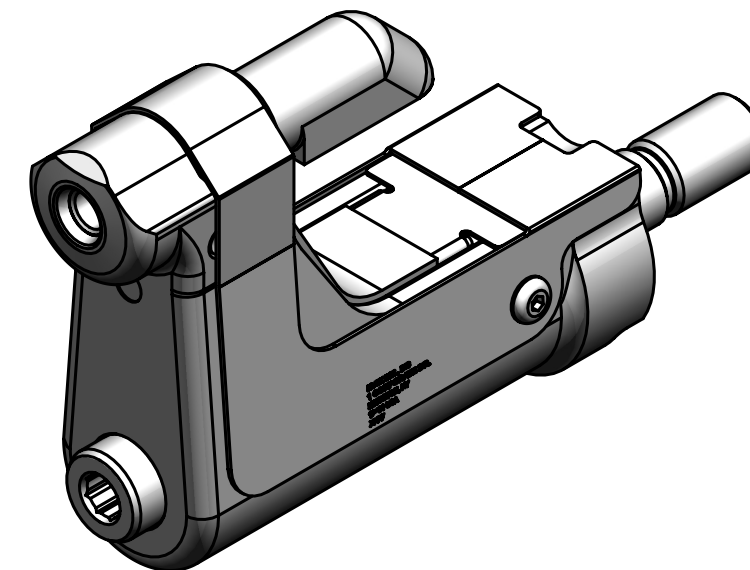
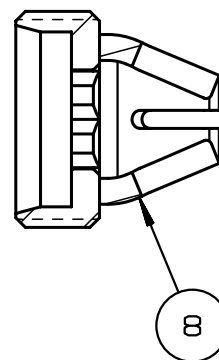
G	508511	2	B.H.C.S.	10
	128488	1	DRAWBAR	9
	126748-2	1	UNITIZED DEFLECTOR	8
	129799	1	COLLET	7
G	130326-1	1	GUARD	6
	120095	1	DEFLECTOR	5
	122727	1	BARBED RETAINER	4
	130055	1	UNITIZED CHUCK JAW	3
G	130322-1	1	TOP GUARD	2
	127290	1	ANVIL	1
	PART NO.	QTY	DESCRIPTION	ITEM

IDENTIFICATION PER SPEC 42-311: ★ PERMANENT	HUCK INTERNATIONAL, INC., I.S.D 1 CORPORATE DR KINGSTON, NEW YORK 12401			
ITAR/ECCN: EAR99	NOSE ASSEMBLY -07 LGP STRADDLE LONG			
SCH B#: 8467.99.0190	FINAL ASSY: FOR USE WITH 206-375			
HTS: 8467.99.0190	ENG: NDG	CK:	DATE: 02/01/11	SCALE: 2:1
	B	99-3763-1		



NOTES:

- 1 MAXIMUM RECOMMENDED STROKE: .500
- 2 FOR USE WITH THE 225/245 TOOL, USE ATTACHMENT P/N 119400-1 AND STROKE LIMITER 118362
- 3 FOR USE WITH 2500 TOOL, USE ATTACHMENT P/N 119400-1 AND STROKE LIMITER KIT 119888
- 4 FOR OTHER TOOLS AND/OR OTHER TOOL AND STROKE COMBINATIONS, CONSULT ENGINEERING DEPARTMENT
- 5 SHIP WITH STOP 126747
- 6 SHIP WITH DEFLECTOR 126748-2
- 7 SHIP WITH (2) .030 SHIMS 128290 REFERENCE PB563 FOR PROPER USE



REV	DESCRIPTION	DET	DATE
E	UPDATED DRAWING BORDER, 129799 WAS 128641, ADDED 128488 TO B.O.M.	NDG	02/01/11
F	ITEM 3, 130055 WAS 127191	EL	11/14/11
G	130322-1 WAS 126746; 130326-1 WAS 126745; ADDED 508511; ADDED VIEW; ADDED .375 & 1.172 DIMS	HKS	6/13/13

G	508511	2	B.H.C.S.	10
	128488	1	DRAWBAR	9
	126748-2	1	UNITIZED DEFLECTOR	8
	129799	1	COLLET	7
G	130326-1	1	GUARD	6
	120095	1	DEFLECTOR	5
	122727	1	BARBED RETAINER	4
	130055	1	UNITIZED CHUCK JAW	3
G	130322-1	1	TOP GUARD	2
	127290	1	ANVIL	1
	PART NO.	QTY	DESCRIPTION	ITEM

IDENTIFICATION PER SPEC 42-311: ★ PERMANENT		HUCK INTERNATIONAL, INC., I.S.D 1 CORPORATE DR KINGSTON, NEW YORK 12401		
ITAR/ECCN: EAR99		NOSE ASSEMBLY -07 LGP STRADDLE LONG		
SCH B#: 8467.99.0190		FINAL ASSY: FOR USE WITH 206-375		
HTS: 8467.99.0190		ENG: NDG	CK:	DATE: 02/01/11 SCALE: 2:1
		B	99-3763-1	