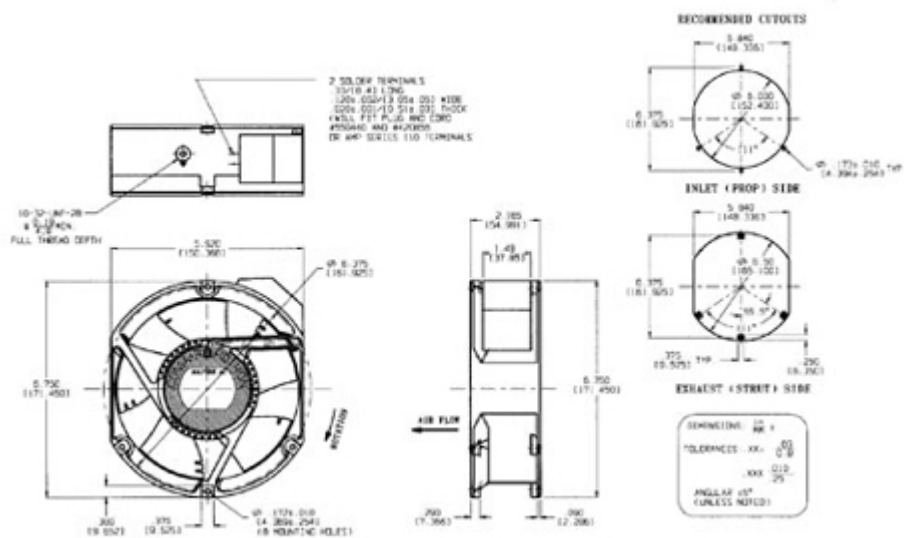




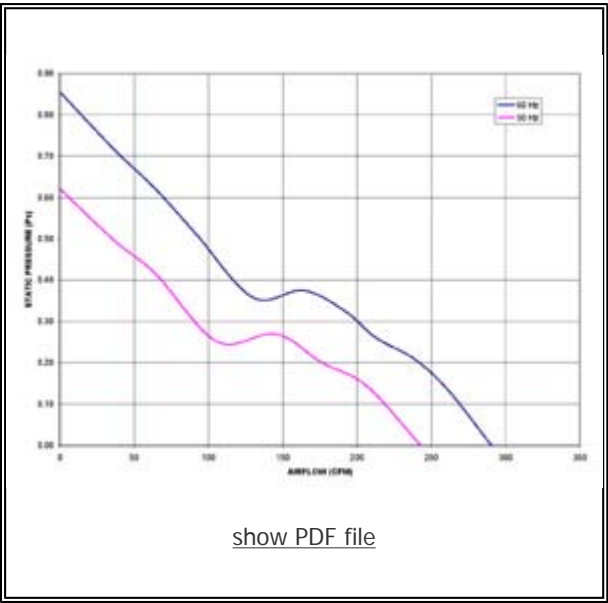
COMAIR ROTRON PART NUMBER: **031842**  
COMAIR ROTRON MODEL NUMBER: **MA2B3**




MOTOR	
Rated Voltage:	115
Operating Voltage Range:	
Running Current: 50Hz   60Hz (amps)	0.36   0
Locked Rotor Current: (amps)	0.75
Rated Power: 50Hz   60Hz (watts)	50   60
Nominal Speed: 50Hz   60Hz (rpm)	3350   0

MECHANICAL	
Dimensions:	172mm x 150mm x 55mm (6.75in x 5.92in x 2.165in)
Bearing Type:	Ball
Motor Base:	Metal
Propeller:	Polycarbonate

[show PDF file](#)

NOTES



PERFORMANCE CHARACTERISTICS	
Air Flow: (CFM)	245/300
Static Pressure:	.621/.855
TERMINATION	
Leadwires:	Terminals
SAFETY	
<div><div>CE</div><div><div>SAUERT GEPRÜFT TYPE APPROVED</div></div><div><div>C<sub>UL</sub></div></div><div><div>C<sub>UL</sub></div></div></div>	

All product names are used under license and are trademarks or registered trademarks of Comair Rotron, Inc.

[New Search](#)

