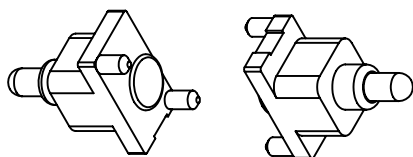
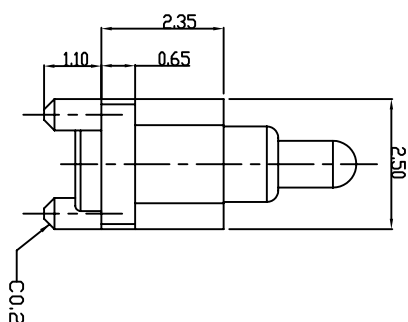
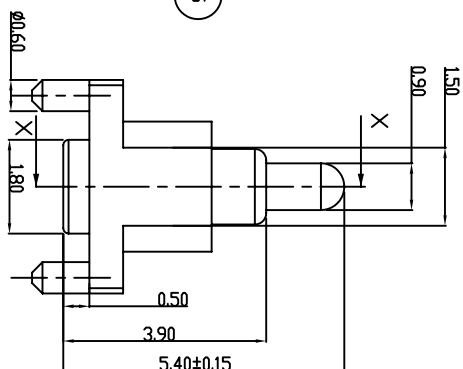
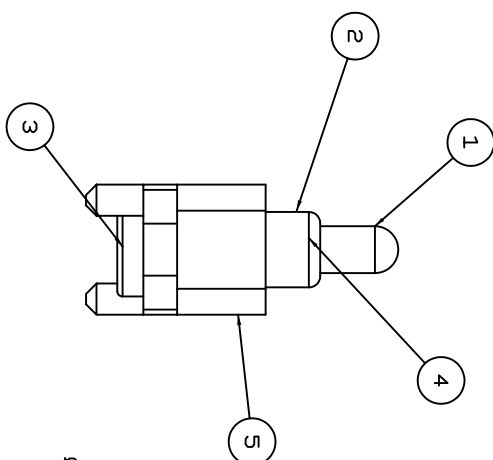
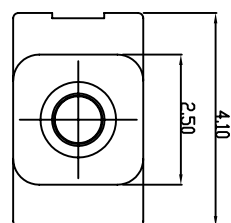
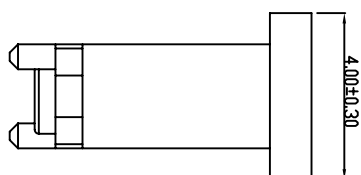
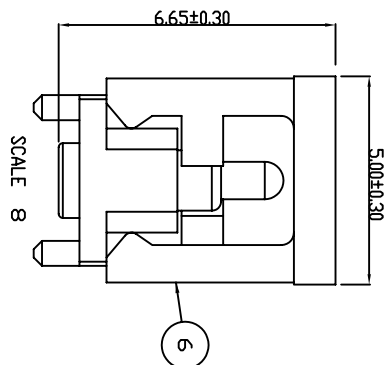


Tous droits strictement reserves. Reproduction ou communication a des tiers interdite sous quelque forme que ce soit sans autorisation ecrite du proprietaire. Propriete de c FCI. Droits de reproduction FCI.

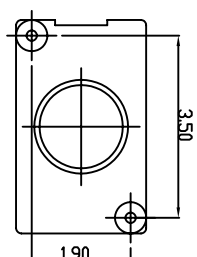
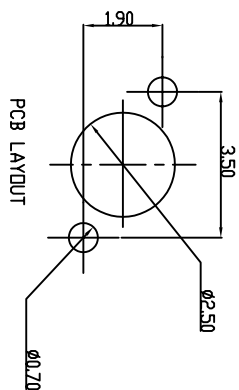
PRODUCT NO.
10063764-001
10063764-001LF





## NOTES

1. PIN OPERATION FORCE:100±22g at 1.0 COMPRESSION
2. FULL STROKE:1.2mm
3. PRODUCT SPECS--12-366.
4. PACKAGE SPECS--14-1048.
5. THIS PRODUCT MEETS THE EUROPEAN UNION DIRECTIVE AS DESCRIBED IN GS-22-008.
6. THE HOUSING WILL WITHSTAND EXPOSURE TO 260°C PEAK TEMPERATURE FOR 10 SECONDS IN A CONVECTION, IR OR VAPOR PHASE REFLOW OVEN

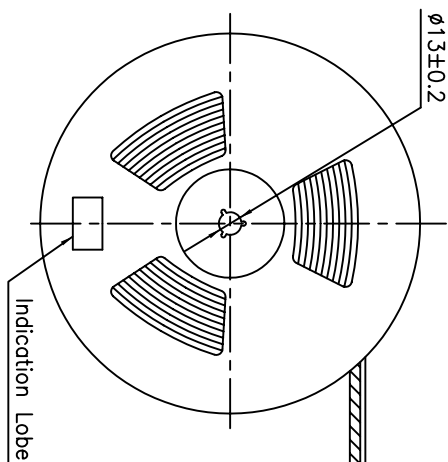
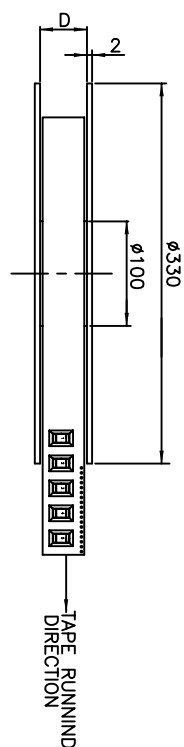
ITEM	PART NAME	Q'TY	MATERIAL
1	PIN	1	BASS
2	CASING	1	BASS
3	BOITION COVER	1	BASS
4	SPRING	1	STAINLESS
5	BDDY	1	NYLON
6	SMD COVER	1	NYLON



mat'l. code				tolerances unless otherwise specified			CUSTOMER COPY		<div><div><div>A</div><div>FCI</div><div>www.fciconnect.com</div></div><div>BATTERY CONNECTOR 1-POS 5.4mm, POGO PIN TYPE</div></div>									
ltr	ecn no	dr	date	linear	.X $\pm$ 0.30 .XX $\pm$ 0.20 .XX $\pm$ 0.10	projection		title	product family	BATTERY	code	-						
A	T06-0113	A.C.	6/05/06															
				angles	0° $\pm$ 2°													
				dr	MAGIE WU	11/23/05		MM	size	dwg no								
				engr	RY LIU	11/23/05												
				chr	STERLING LIN	11/23/05	scale											
				opqd	H.C LIU	11/23/05	N/A	A4	10063764		sheet 1 of 2							
sheet index	revision	A	A	1	2													

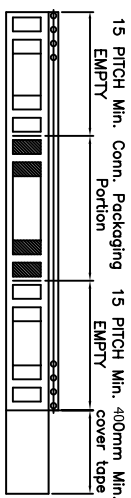
A(CAT)

cage code  
22526

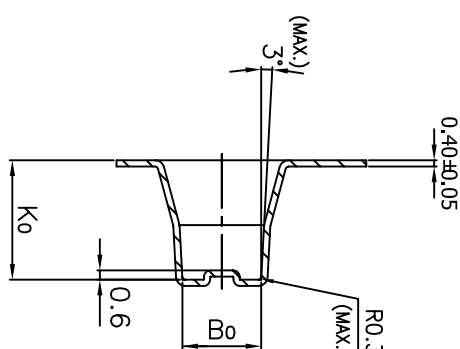
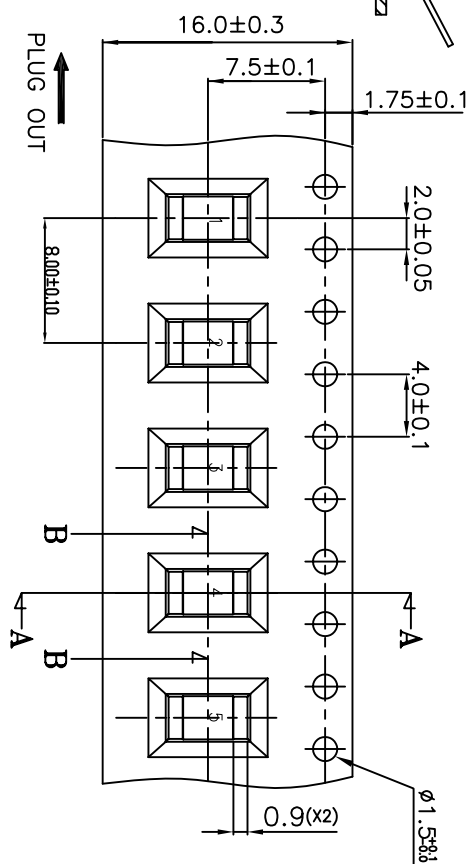
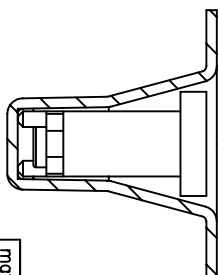
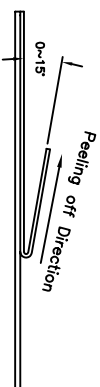


## NOTES

1. All dimensions meet ELA-481-2 requirements.
2. Material: Carrier Tape: Polypropylene  
Cover Tape: Polyester

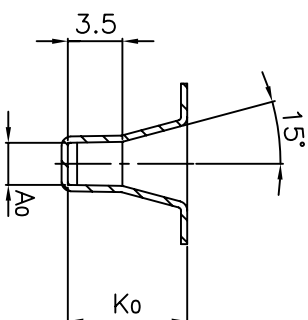


4. Peeling off force of Cover Tape : 30~110g



## **SECTION A-A**

ITEM	A <sub>o</sub>	B <sub>o</sub>	K <sub>o</sub>
DIM	2.70 <sup>+0.10</sup> <sub>-0.10</sub>	5.05 <sup>+0.10</sup> <sub>-0.10</sub>	7.65 <sup>+0.11</sup> <sub>-0.11</sub>



**SECTION B-B**

[illegible]