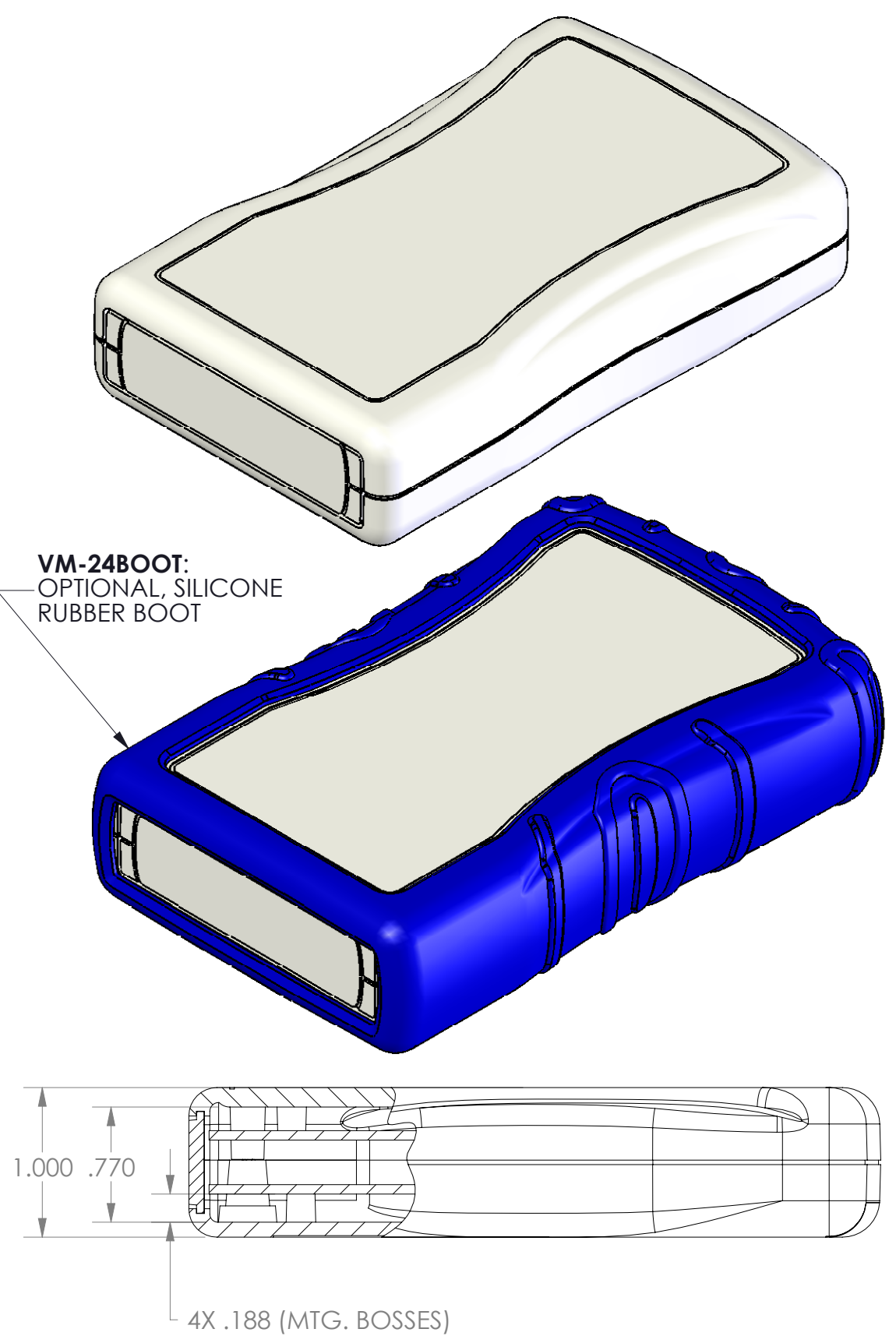
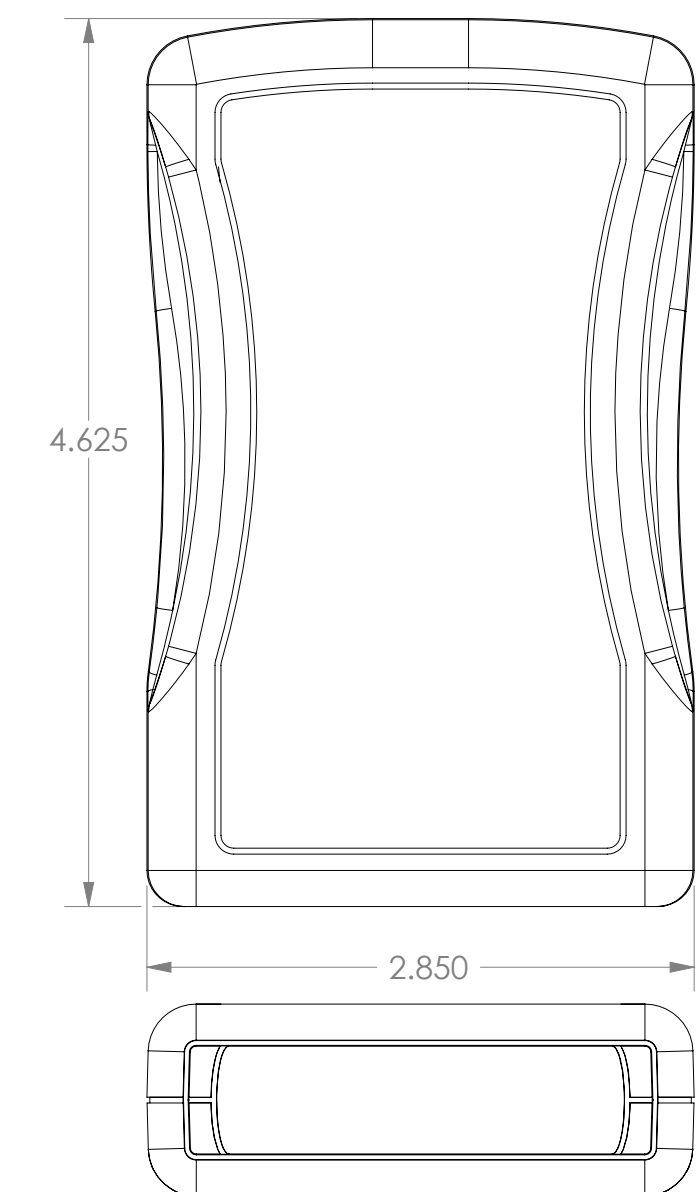


Enclosure Options	
OMIT	ENCLOSURE COLOR: BLACK
*03	ENCLOSURE COLOR: BONE
T	END PANEL: TEXTURED TO MATCH ENCLOSURE
S	END PANEL: SMOOTH, UNTEXTURED FOR INFRARED APPLICATIONS
T	COVER: TEXTURED FLUSH
R	COVER: RECESSED SMOOTH
2AA	BASE: ACCEPTS 2X AA BATTERIES
19V	BASE: ACCEPTS ONE 9V BATTERY

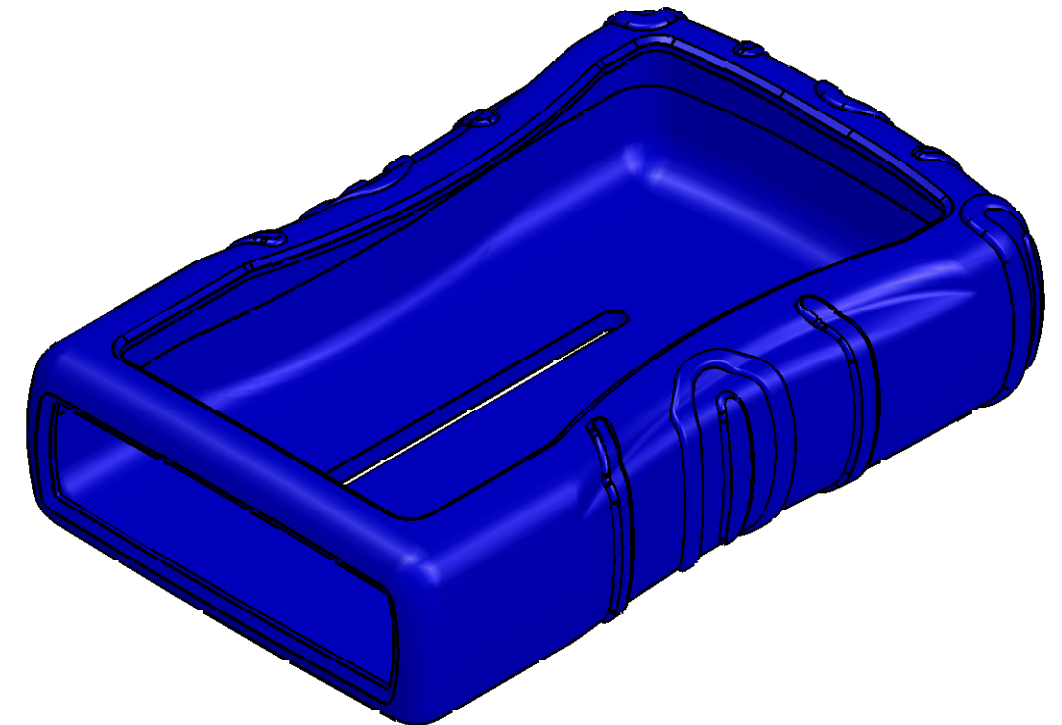
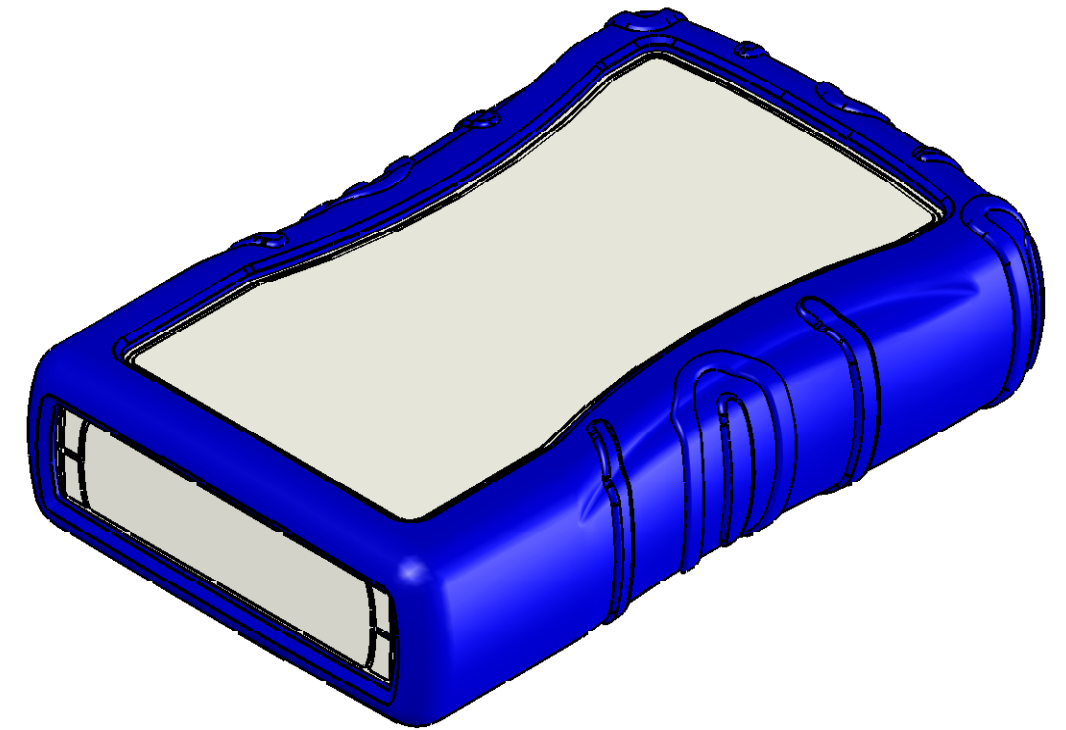
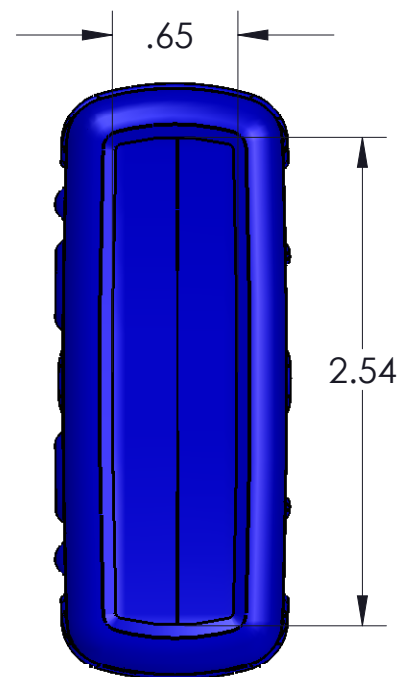
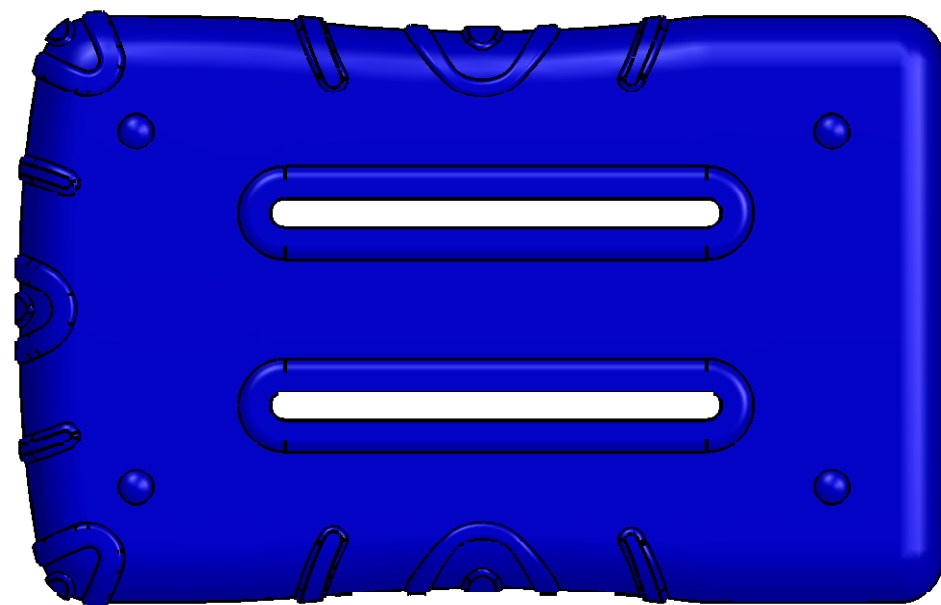
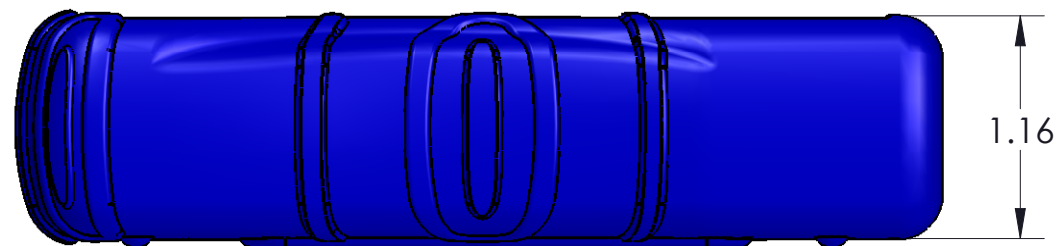
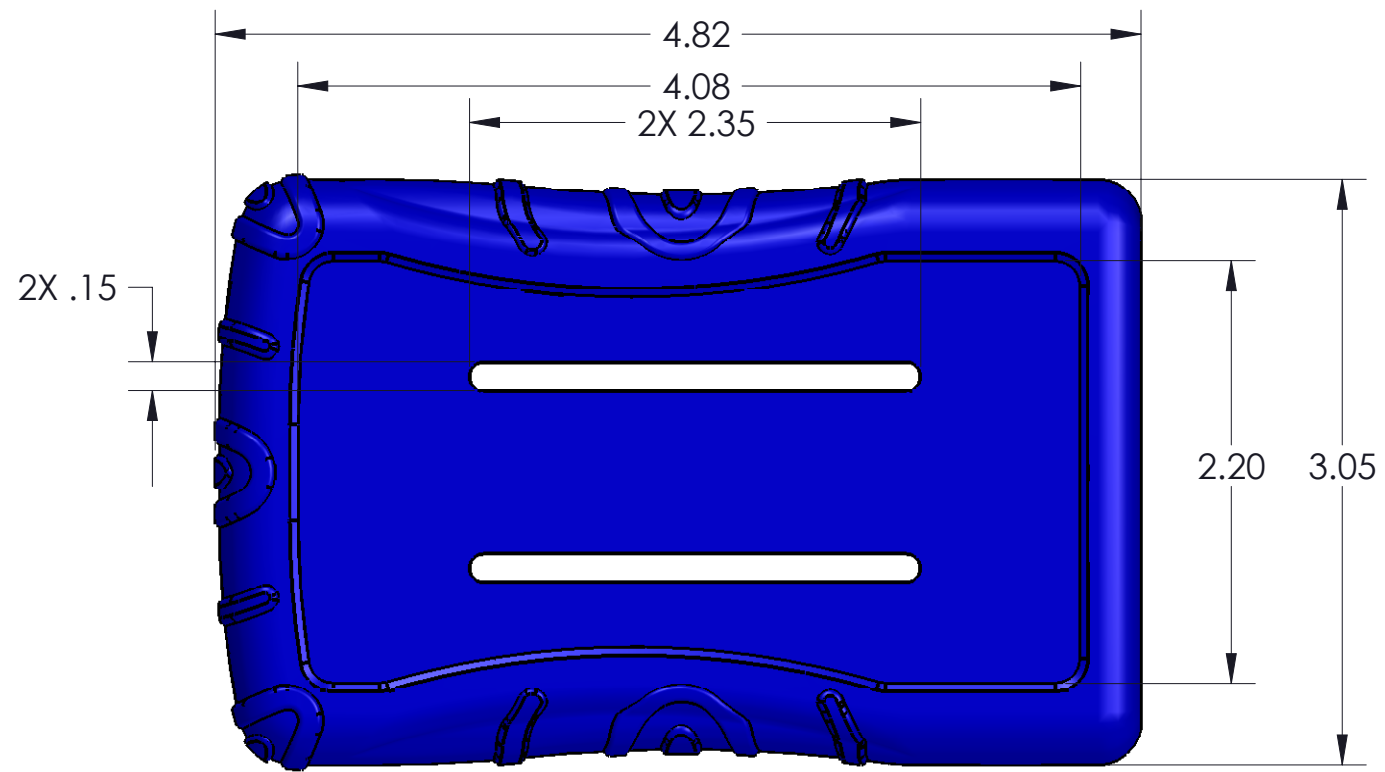
ITEM NO.	PART NUMBER	DESCRIPTION	VM-24M2AAMTT/QTY.	VM-24M19VMTT/QTY.
11	FOAM-1*01	1.5 X .875 X .25 GRAY POLYESTER FOAM WITH ADHESIVE ON ONE SIDE	-	1
10	CNT-9V	9 VOLT BATT'Y STRAP, 6 IN. LEAD	-	1
9	VM-24BMB19V	BASE: ONE 9V BATTERY	-	1
8	CNT-AA-SINGLE-F	SINGLE (FEMALE) AA BATTERY CONTACT	1	-
7	CNT-AA-DUAL-M/F	DUAL MALE / FEMALE AA BATTERY CONTACT	1	-
6	CNT-AA-SINGLE-M	SINGLE (MALE) AA BATTERY CONTACT	1	-
5	SCREWS-HL5/8-BR	THREAD FORMING ASS'Y SCREW: 5/8 INCH	4	4
4	VM-D1	BATTERY DOOR	1	1
3	VM-24EPT	END PANEL: TEXTURED SURFACE	1	1
2	VM-24CMBT	COVER: WITH MOUNTING BOSSSES, TEXTURED FLUSH	1	1
1	VM-24BMB2AA	BASE: TWO AA BATTERIES	1	-
BOM Table				



NOTES:
1. PRELIMINARY DRAWING
2. ENCLOSURE INCLUDES 1 BASE, 1 COVER, 1 BATTERY DOOR, 1 END PANEL, 4 SCREWS FOR ENCLOSURE ASS'Y & NICKEL PLATED BATTERY CONTACTS.
3. BATTERY CONTACTS PACKED SEPARATELY
4. BATTERIES NOT INCLUDED
5. ENCLOSURE ACCEPTS (2) AA BATTERIES
6. COLORS AVAILABLE: BLACK & PC BONE
7. MOUNTING BOSSSES ACCEPT #4-24 X 1/4" THREAD FORMING SCREWS FOR A 1/16" THK PC BOARD. SCREWS AVAILABLE FROM POLYCASE.


1305 CHESTER RD. PARKWAY AVON, OHIO 44011-1083 U.S.A.
PH: 1-800-248-1233, 440-934-0444 FAX: 440-934-0088
TOLERANCES UNLESS OTHERWISE SPECIFIED:
X.XX ±.030
X.XXX ±.015

DRWN BY D.F.	APP. BY -	SCALE: 1:1	DATE: 00/00/00
JOB NO: -	PRODUCT: -		
CUSTOMER: -		SIZE: C	
TITLE: PRODUCT DETAIL DRAWING			



NOTES:

1. COLORS AVAILABLE: BLACK, BLUE, RED
2. MATERIAL: SILICONE RUBBER WITH PREMIUM SILICONE COATING

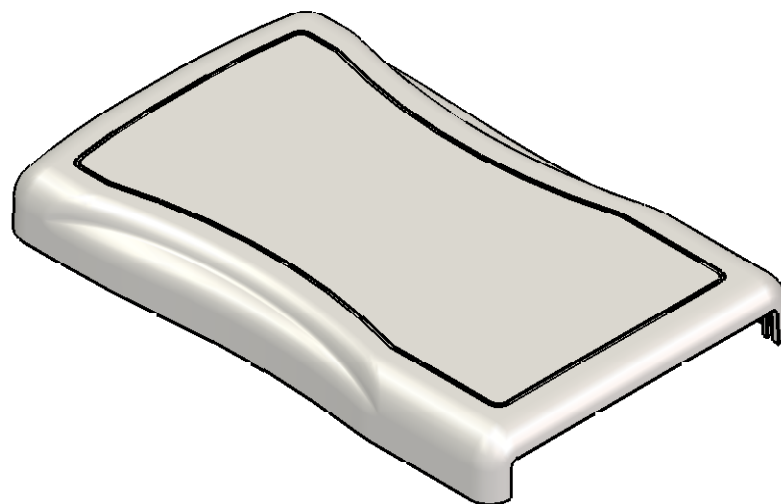
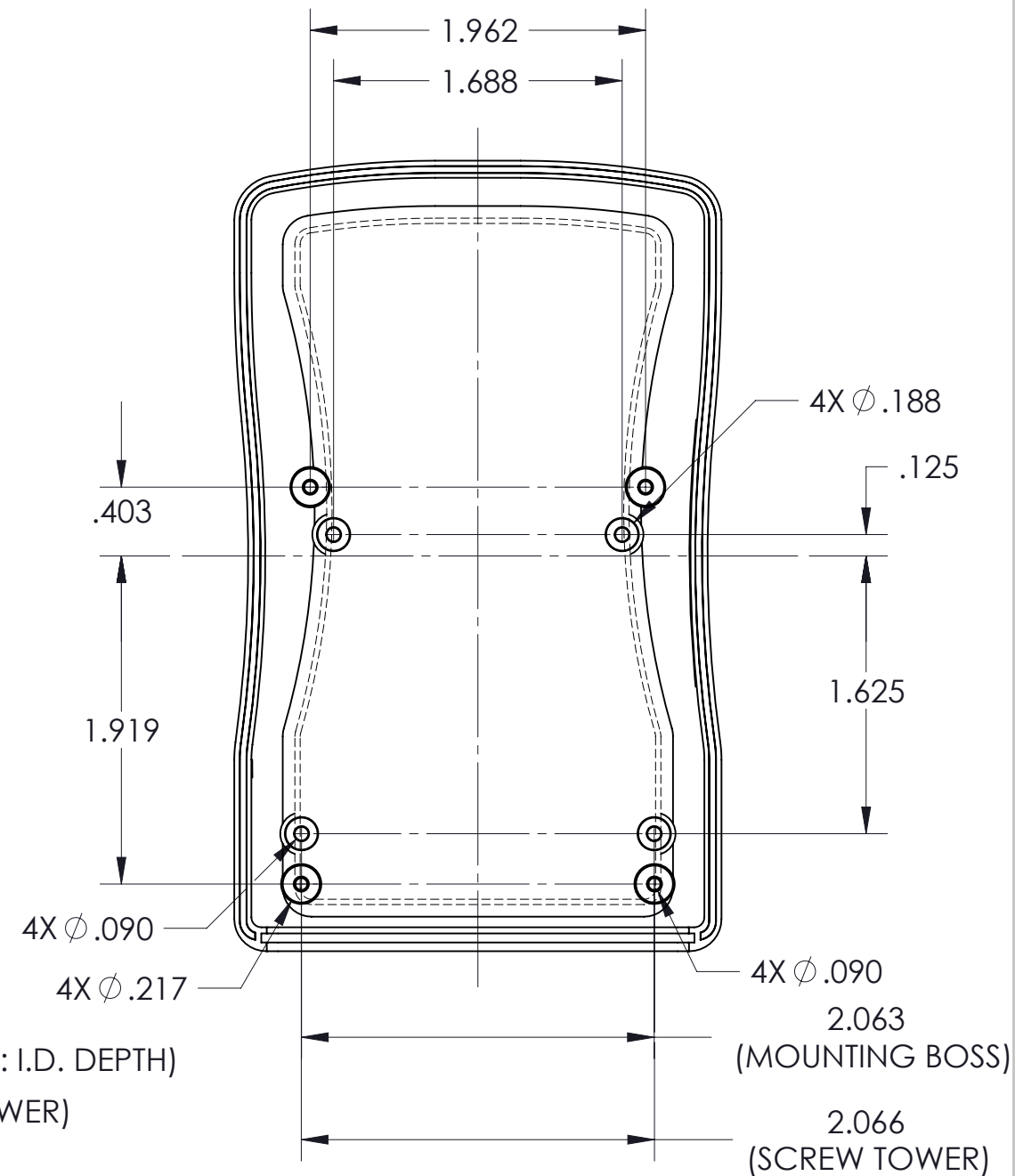
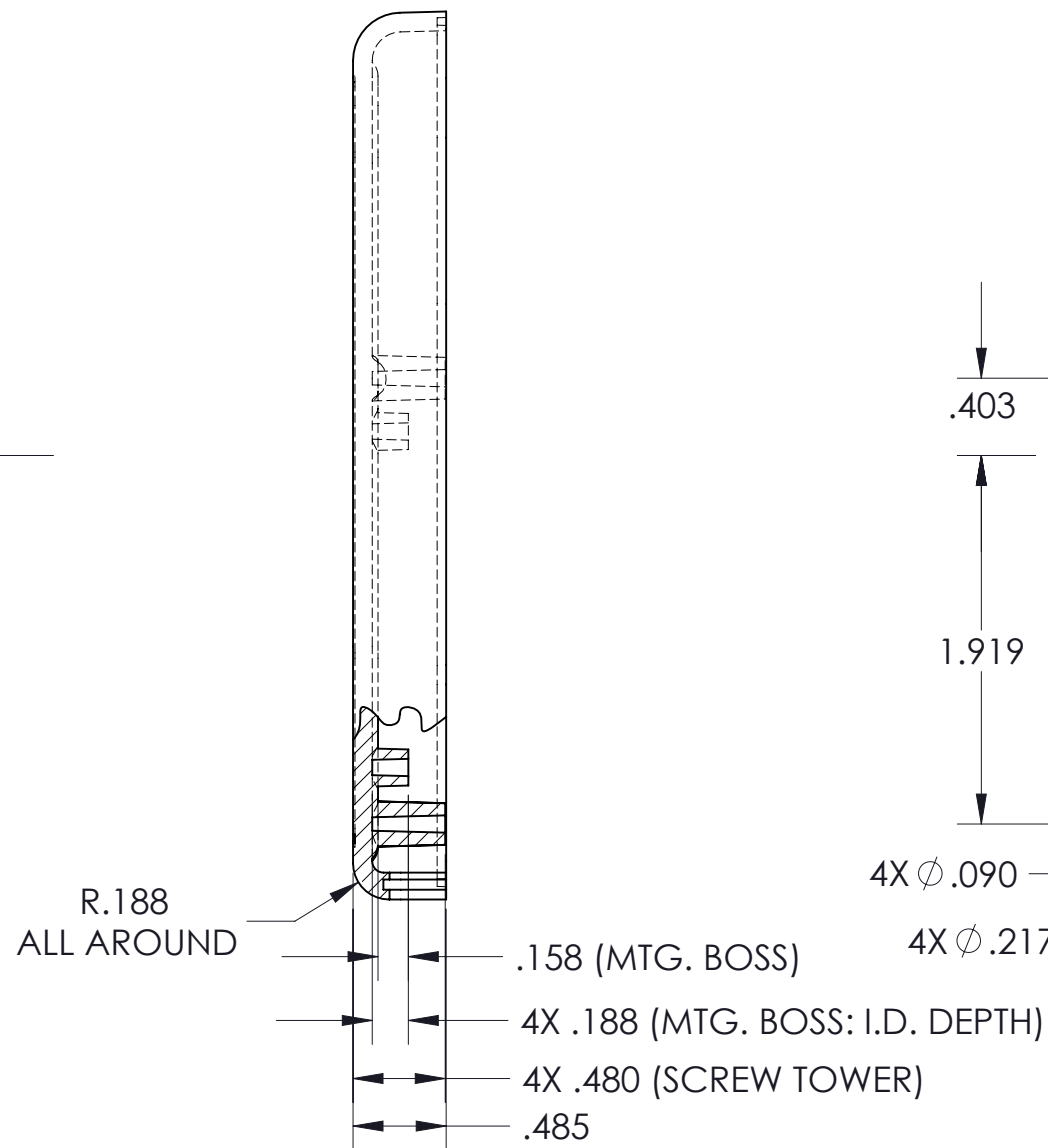
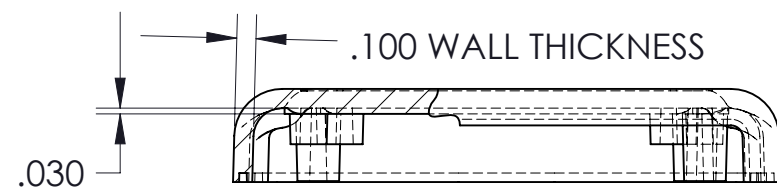
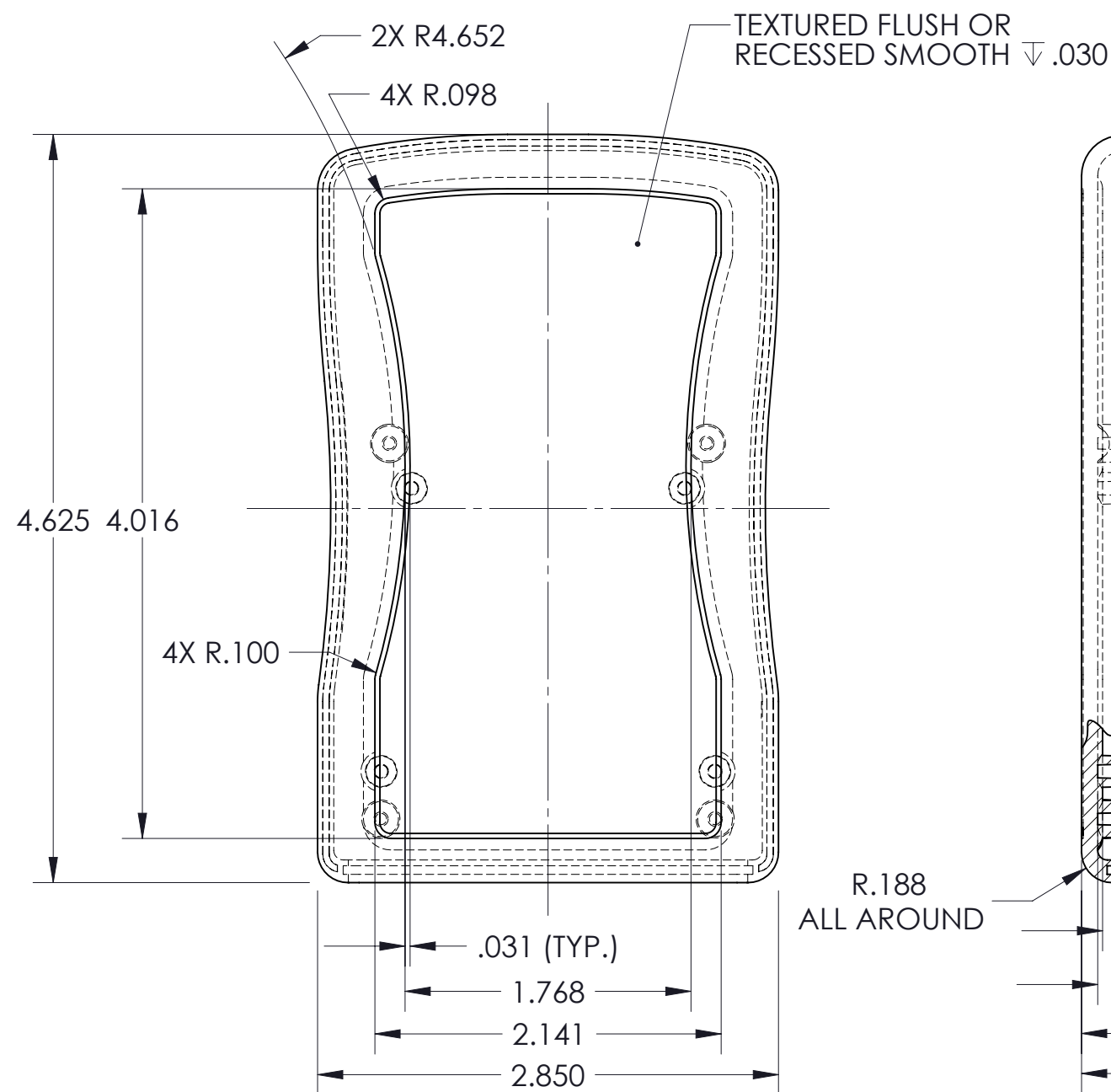


POLYCASE
YOUR PERFECT FIT

TOLERANCES UNLESS OTHERWISE SPECIFIED:
X.XX ±.120
X.XXX ±.060

1305 CHESTER IND. PARKWAY AVON, OHIO 44011-1083 U.S.A.
PH#: 1-800-248-1233, 440-934-0444 FAX#: 440-934-0088
THIS DRAWING AND THE INFORMATION CONTAINED ARE THE PROPERTY OF POLYCASE AND ARE NOT TO BE REPRODUCED, COPIED OR USED IN ANY WAY DETRIMENTAL TO THE INTEREST OF POLYCASE

DRWN BY D.F.	APP. BY B.B.	SCALE: 1:1	DATE: 3/2/07
JOB NO: -		PRODUCT: VM-24-BOOT	
CUSTOMER: -			SIZE: B
TITLE: PRODUCT DETAIL DRAWING			



NOTE:

1. PRELIMINARY DRAWING: DIMENSIONS SUBJECT TO CHANGE
2. MTG. BOSSES TO ACCEPT A #4-24 X 1/4 THREAD FORMING SCREW USED WITH A 1/16 THICK PCB. (SCREWS AVAILABLE FROM POLYCASE)



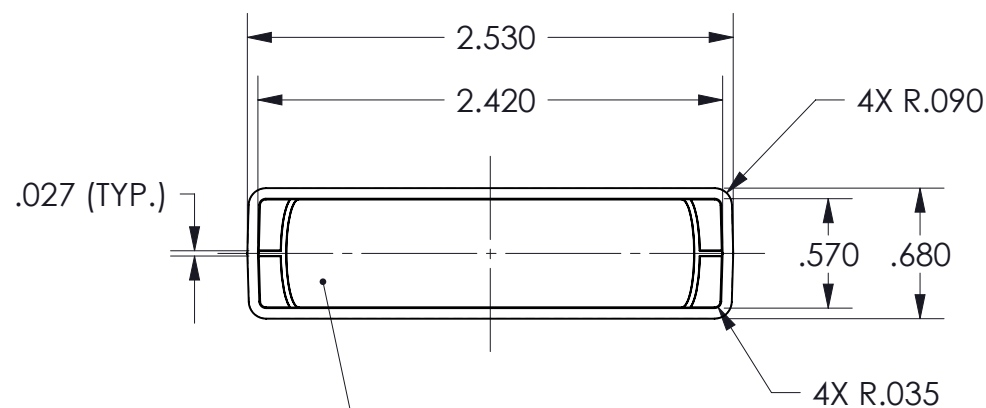
TOLERANCES UNLESS OTHERWISE SPECIFIED:
X.XX \pm .030
X.XXX \pm .015

1305 CHESTER IND. PARKWAY AVON, OHIO 44011-1083 U.S.A.
PH#: 1-800-248-1233, 440-934-0444 FAX#: 440-934-0088

THIS DRAWING AND THE INFORMATION CONTAINED ARE THE PROPERTY OF POLYCASE AND ARE NOT TO BE REPRODUCED, COPIED OR USED IN ANY WAY DETRIMENTAL TO THE INTEREST OF POLYCASE

DRWN BY D.F.	APP. BY B.B.	SCALE: 1:1	DATE: 9/19/06
JOB NO: -		PRODUCT: - VM-24C	
CUSTOMER: -			SIZE: B
TITLE: PRODUCT DETAIL DRAWING			

SHEET 1 OF 1

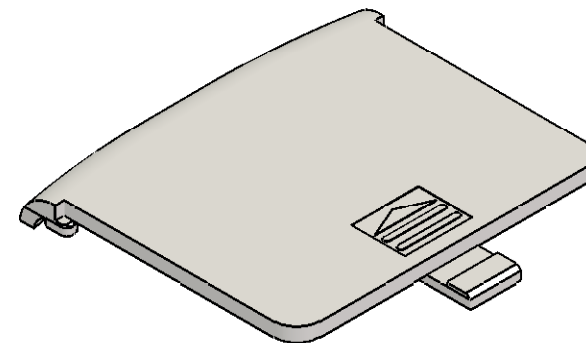
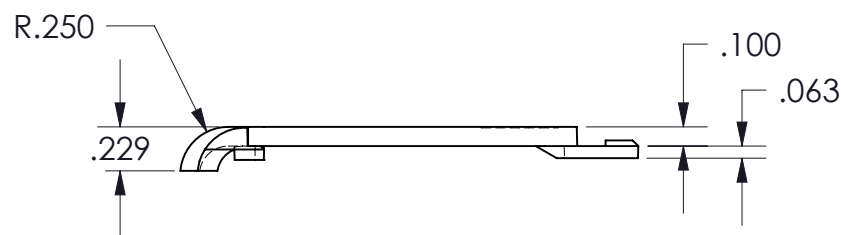
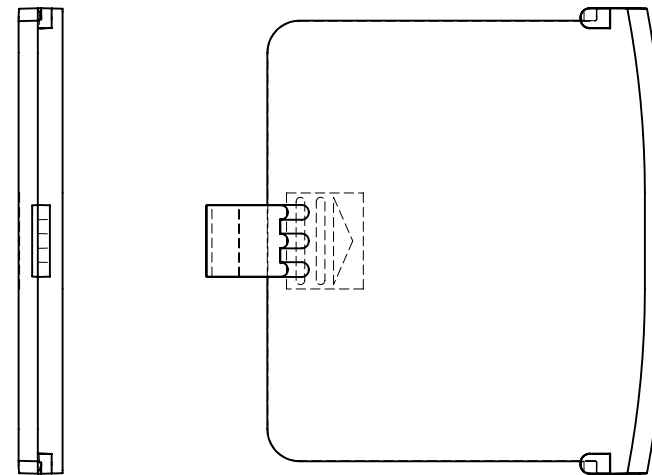
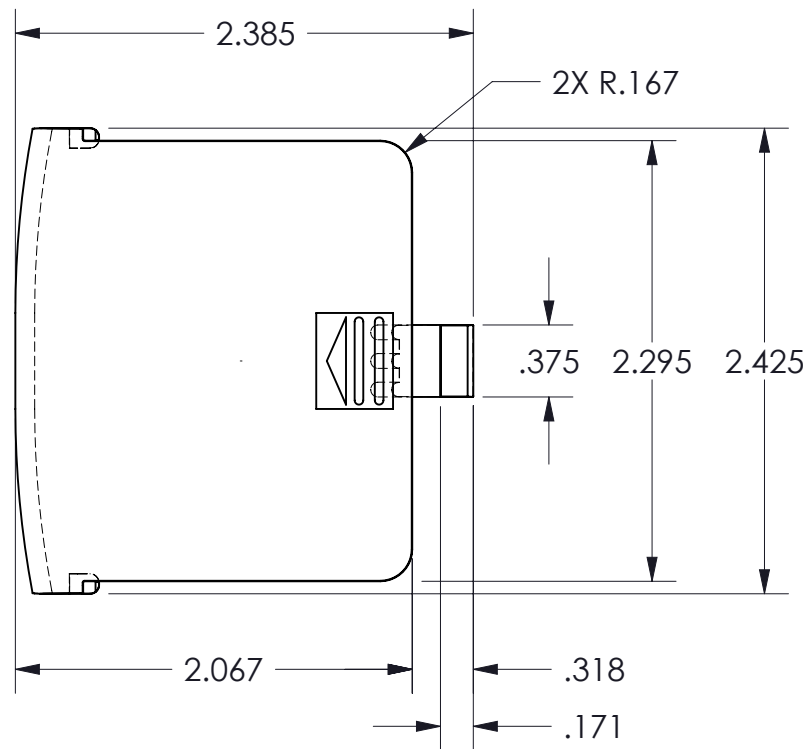


AVAILABLE IN UNTEXTURED, INFRARED PERMISSIVE MATERIAL.

SHEET 1 OF 1

NOTE:
T. PRELIMINARY DRAWING: DIMENSIONS SUBJECT TO CHANGE.

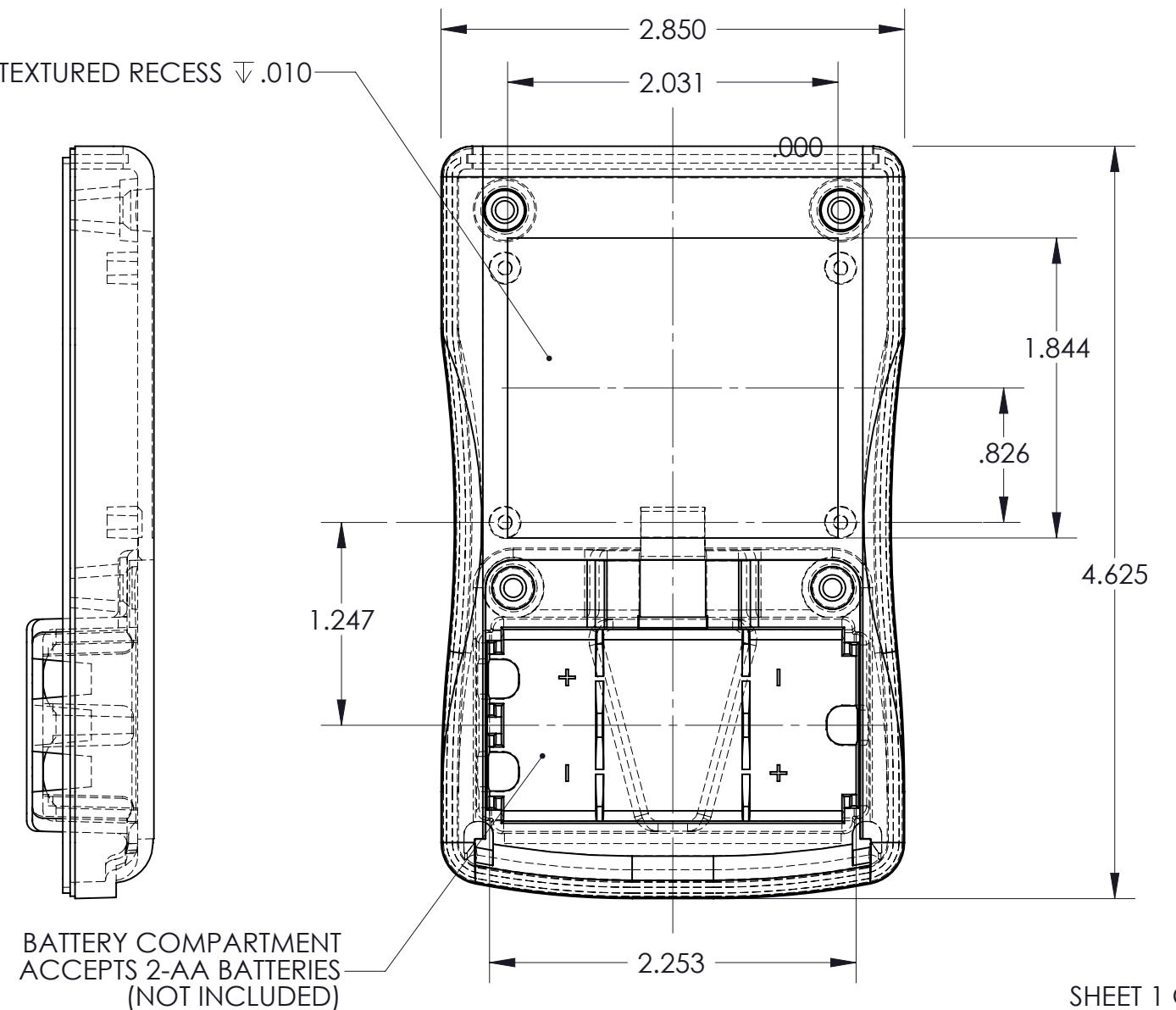
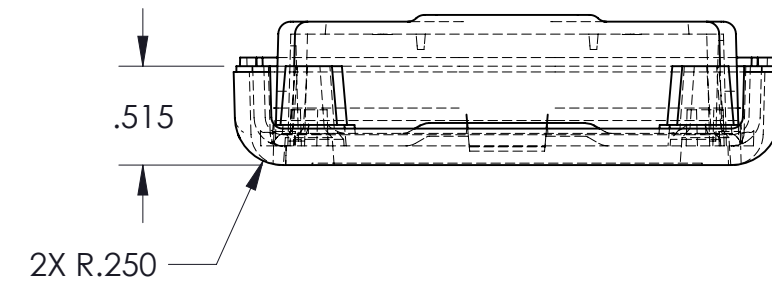
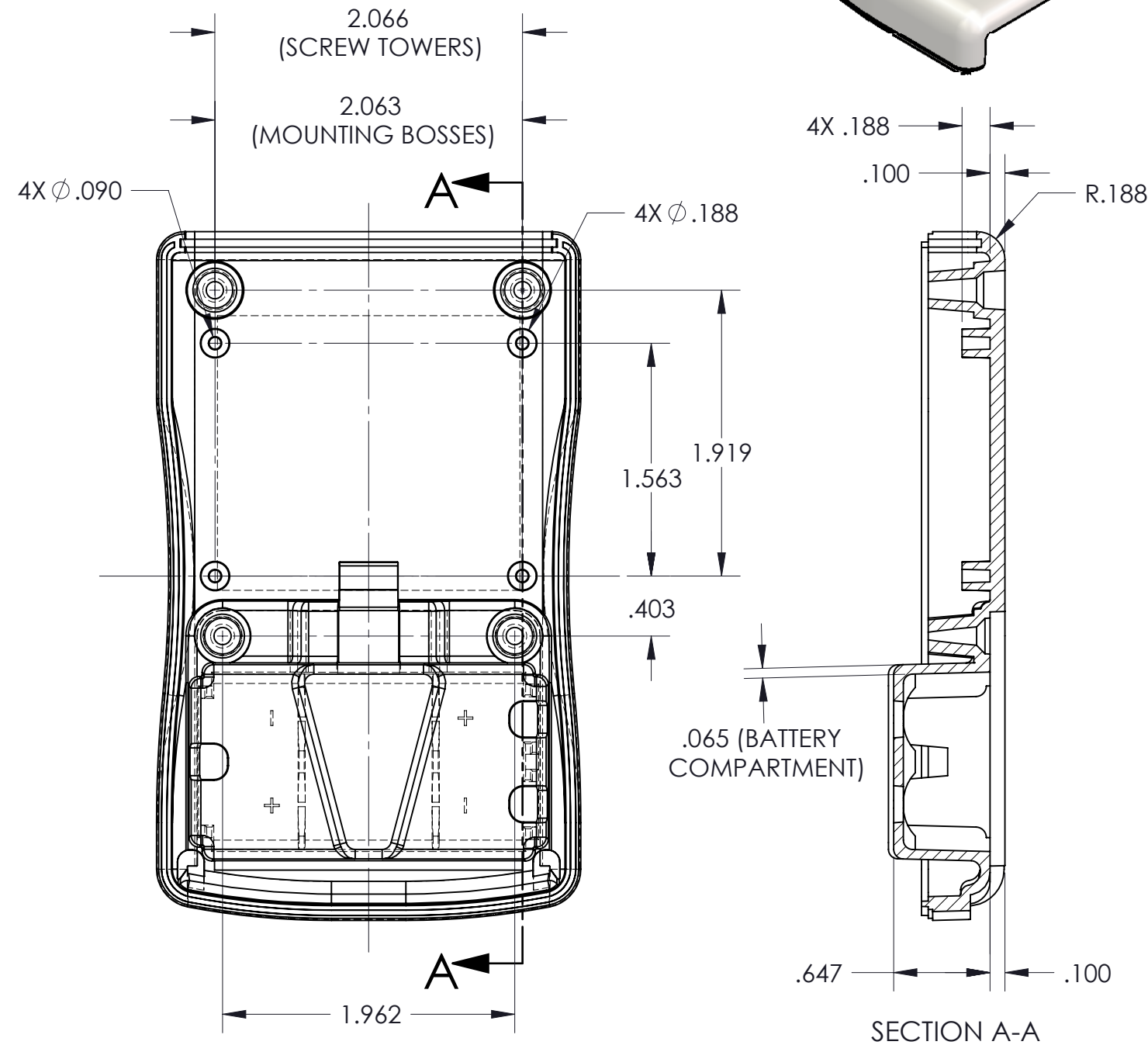
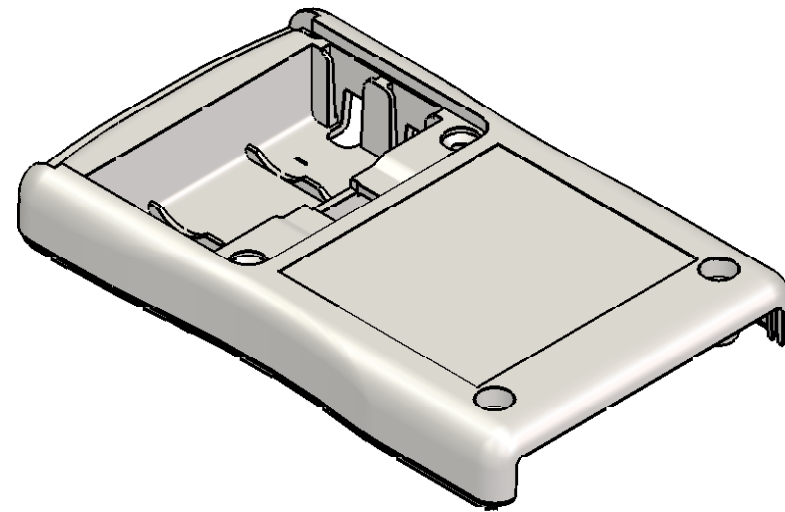
		DRWN BY D.F.	APP. BY B.B.	SCALE: 1:1	DATE: 9/20/06
		JOB NO: -		PRODUCT: VM-24EP	
TOLERANCES UNLESS OTHERWISE SPECIFIED: X.XX ±.030 X.XXX ±.015		1305 CHESTER IND. PARKWAY AVON, OHIO 44011-1083 U.S.A. PH#: 1-800-248-1233, 440-934-0444 FAX#: 440-934-0088		CUSTOMER: -	
THIS DRAWING AND THE INFORMATION CONTAINED ARE THE PROPERTY OF POLYCASE AND ARE NOT TO BE REPRODUCED, COPIED OR USED IN ANY WAY DETRIMENTAL TO THE INTEREST OF POLYCASE		TITLE: PRODUCT DETAIL DRAWING		SIZE: A	



SHEET 1 OF 1

NOTE:
T. PRELIMINARY DRAWING: DIMENSIONS SUBJECT TO CHANGE.

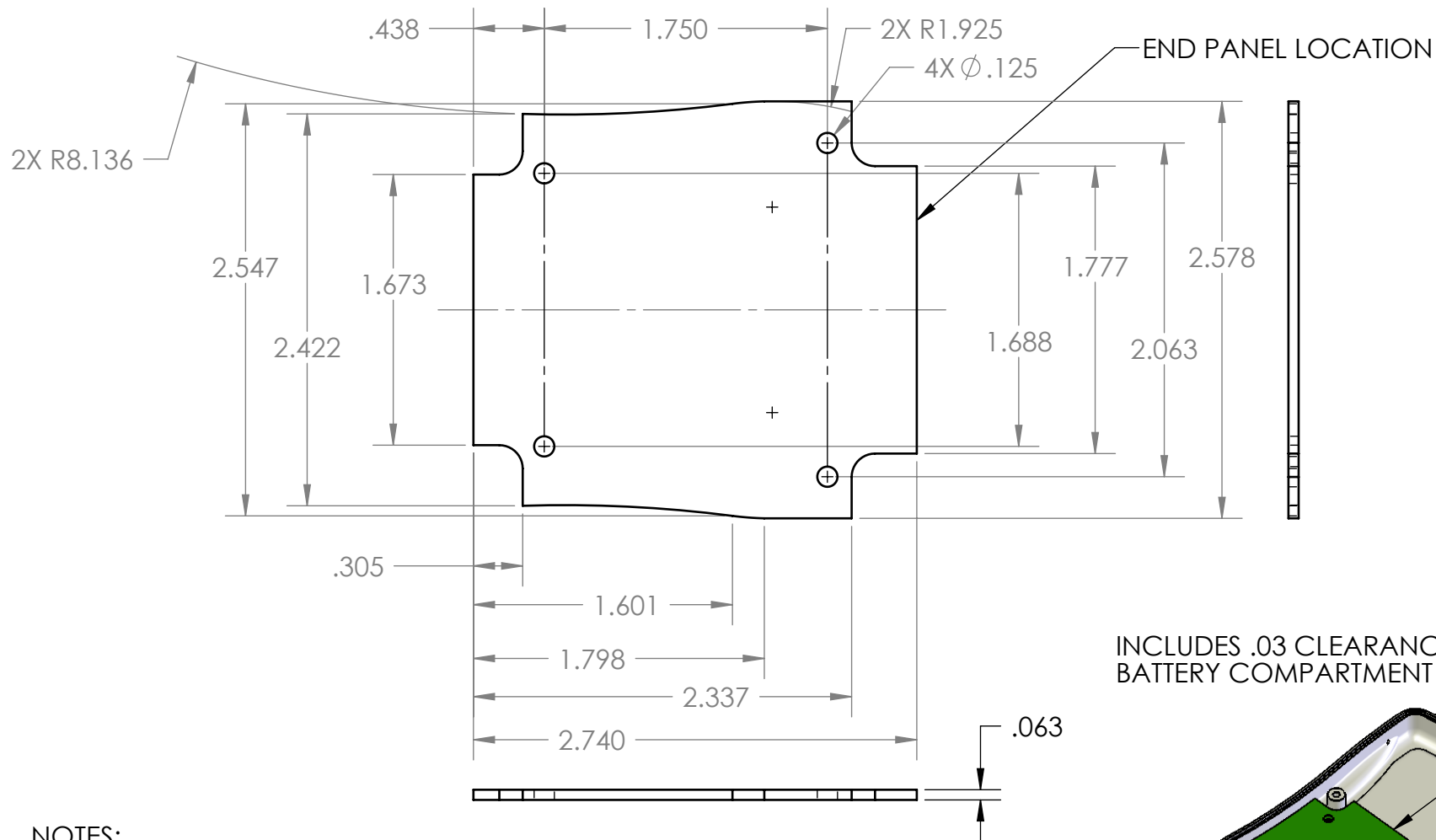
 POLYCASE YOUR PERFECT FIT		DRWN BY D.F.	APP. BY -	SCALE: 1:1	DATE: 9/20/06
		JOB NO: -	PRODUCT: VM-D1		
TOLERANCES UNLESS OTHERWISE SPECIFIED: X.XX ±.030 X.XXX ±.015		1305 CHESTER IND. PARKWAY AVON, OHIO 44011-1083 U.S.A. PH#: 1-800-248-1233, 440-934-0444 FAX#: 440-934-0088 THIS DRAWING AND THE INFORMATION CONTAINED ARE THE PROPERTY OF POLYCASE AND ARE NOT TO BE REPRODUCED, COPIED OR USED IN ANY WAY DETRIMENTAL TO THE INTEREST OF POLYCASE			CUSTOMER: -
		TITLE: PRODUCT DETAIL DRAWING			SIZE: A



NOTE:
1. PRELIMINARY DRAWING: DIMENSIONS SUBJECT TO CHANGE
2. PC BOSSSES TO ACCEPT A #4-24 X 1/4 THREAD FORMING SCREW
USED WITH A 1/16 THICK PCB. (SCREWS AVAILABLE FROM POLYCASE)

 <div>POLYCASETM YOUR PERFECT FIT</div>		DRWN BY D.F.		APP. BY B.B.		SCALE: 1:1		DATE: 9/20/06	
TOLERANCES UNLESS OTHERWISE SPECIFIED: X.XX ±.030 X.XXX ±.015		1305 CHESTER IND. PARKWAY AVON, OHIO 44011-1083 U.S.A. PH#: 1-800-248-1233, 440-934-0444 FAX#: 440-934-0088		JOB NO: - - -		PRODUCT: VM-24BMB2AA -			
		THIS DRAWING AND THE INFORMATION CONTAINED ARE THE PROPERTY OF POLYCASE AND ARE NOT TO BE REPRODUCED, COPIED OR USED IN ANY WAY DETRIMENTAL TO THE INTEREST OF POLYCASE		CUSTOMER: -				SIZE: B	
				TITLE: PRODUCT DETAIL DRAWING					

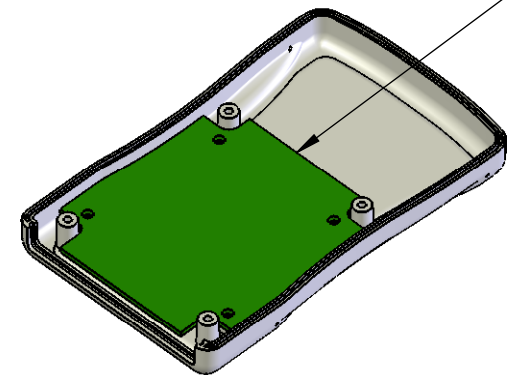
SHEET 1 OF 1



NOTES:

1. PCB SIZES INCLUDE .03 CLEARANCE FROM INNER WALLS AND SCREW TOWERS WHEN UTILIZING THE MOUNTING BOSSES FOUND ON THE VM-24 COVER AND INCLUDES .03 CLEARANCE FROM EITHER THE TWO AA OR ONE 9V BATTERY COMPARTMENT ON THE VM-24 BASE.
2. PCB BOSSES WILL ACCEPT A #4 X 1/4 THREAD FORMING SCREW. (SCREWS ARE AVAILABLE FROM POLYCASE)

INCLUDES .03 CLEARANCE FROM BATTERY COMPARTMENT ON BASE



ZONE	REV.	DESCRIPTION	BY	APPR'D	DATE
REVISIONS					

UNLESS OTHERWISE SPECIFIED: DIMENSIONS ARE IN: INCHES[mm] TOLERANCES: ANGULAR: ±2° TWO PLACE DECIMAL: ±.010 THREE PLACE DECIMAL: ±.005		
PROPRIETARY AND CONFIDENTIAL THE INFORMATION CONTAINED IN THIS DRAWING IS THE SOLE PROPERTY OF POLYCASE. ANY REPRODUCTION IN PART OR AS A WHOLE WITHOUT THE WRITTEN PERMISSION OF POLYCASE IS PROHIBITED. CAD FILE: VM-24C2AA-PCB		

PART NO. VM-24C2AA-PCB		
PRODUCT -		
CLIENT -		
DRAWN	NAME	DATE
CHECKED	D.M.F.	9/5/2008
	-	12/31/2999

	POLYCASE™ YOUR PERFECT FIT 1305 CHESTER IND. PARKWAY AVON, OHIO 44011-1083 U.S.A. PH#: 1-800-248-1233, 440-934-0444 FAX#: 440-934-0088	
	SIZE A	TITLE: Secondary Operations Drawing
SCALE: 1:1		REV -
		SHEET 1 OF 1

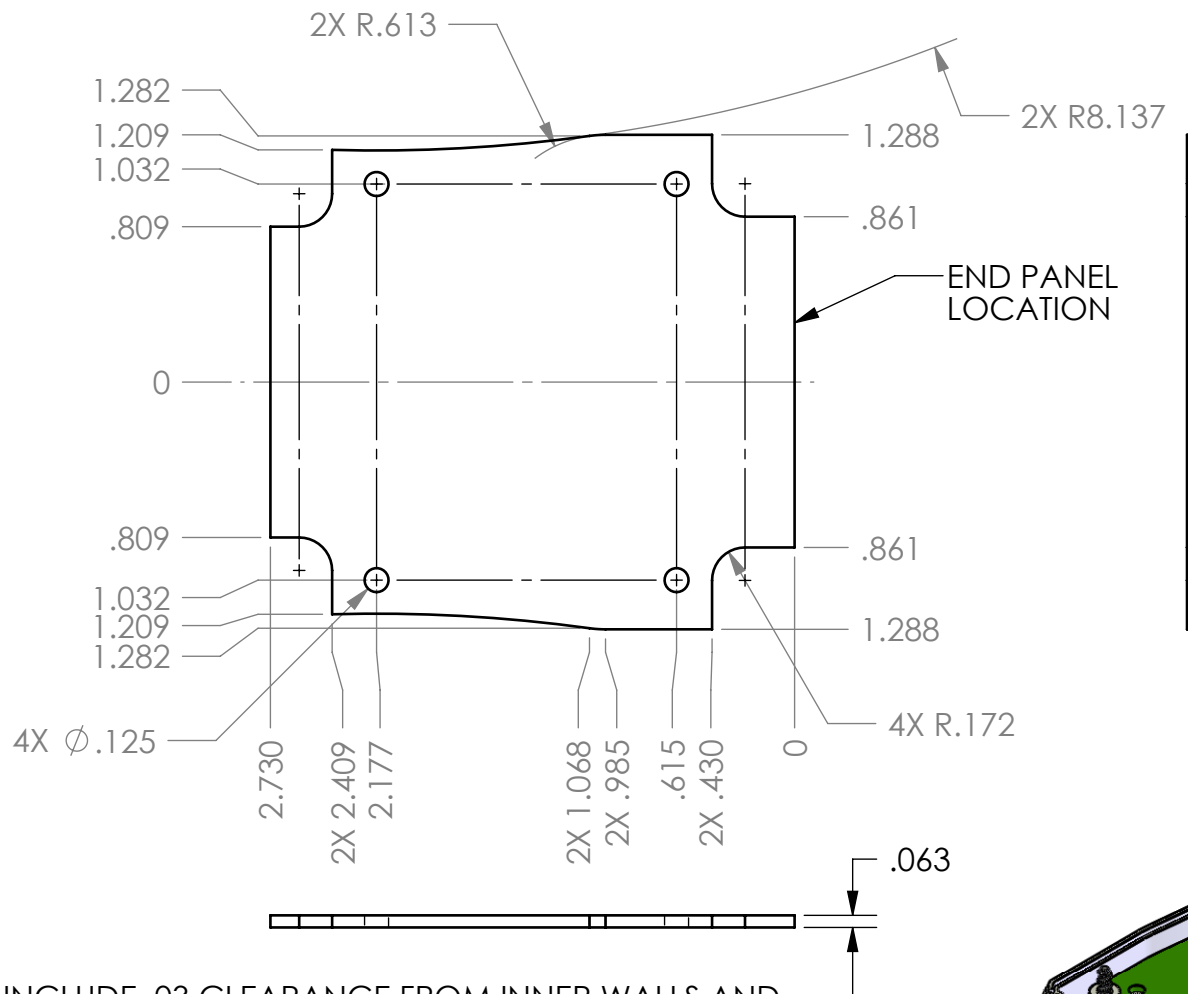
5

4

3

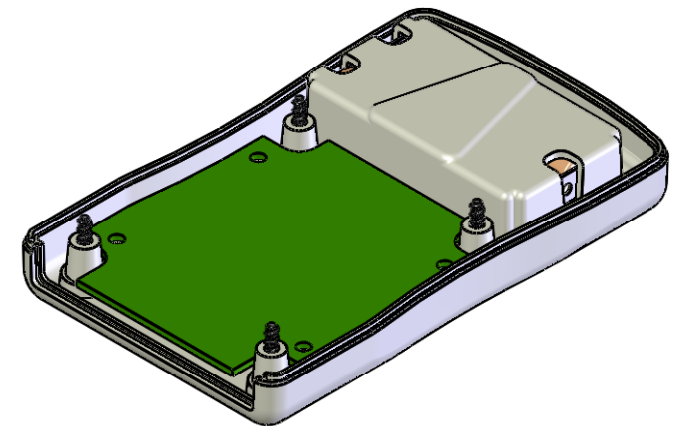
2



1



NOTES:

1. PCB SIZES INCLUDE .03 CLEARANCE FROM INNER WALLS AND SCREW TOWERS WHEN UTILIZING THE MOUNTING BOSSES FOUND ON THE VM-24 BASE WITH THE TWO AA OR ONE 9V BATTERY COMPARTMENT.
2. PCB BOSSES WILL ACCEPT A #4 X 1/4 THREAD FORMING SCREW. (SCREWS ARE AVAILABLE FROM POLYCASE)



<div><div>UNLESS OTHERWISE SPECIFIED: DIMENSIONS ARE IN: INCHES[mm] TOLERANCES: ANGULAR: ±2° TWO PLACE DECIMAL: ±.010 THREE PLACE DECIMAL: ±.005</div><div>PROPRIETARY AND CONFIDENTIAL THE INFORMATION CONTAINED IN THIS DRAWING IS THE SOLE PROPERTY OF POLYCASE. ANY REPRODUCTION IN PART OR AS A WHOLE WITHOUT THE WRITTEN PERMISSION OF POLYCASE IS PROHIBITED.</div><div>CAD FILE: VM-24BMB2AA-PCB</div></div>					PART NO. VM-24BMB2AA-PCB		<div><div>POLYCASE™ YOUR PERFECT FIT</div><div>1305 CHESTER IND. PARKWAY AVON, OHIO 44011-1083 U.S.A. PH#: 1-800-248-1233, 440-934-0444 FAX#: 440-934-0088</div></div>				
					PRODUCT -						
					CLIENT -		SIZE A	TITLE: Secondary Operations Drawing		REV -	
					<div><div></div><div>NAME</div><div>DATE</div></div> <div><div>DRAWN</div><div>CHECKED</div><div>D.M.F.</div><div>-</div><div>9/20/06</div><div>12/31/2999</div></div>						
REV.	ZONE	DESCRIPTION	BY	APPR'D	DATE	SCALE: 1:1 <div><div></div></div> SHEET 1 OF 1					
REVISIONS											

REV.	ZONE	DESCRIPTION	BY	APPR'D	DATE
REVISIONS					

5

4

3

2

1

D

C

B

A

Infra-red readings for 0.100" thick panel

