

KMDGX Series Right Angle Mini-DIN

Features

- PC99 Colors Available
- Shielded Options Available for Good Conductivity, Grounding and EMI/RFI Protection
- Mates with Standard and Snap and Lock Plugs
- Visual and Mechanical Polarization for Plug Insertion
- Reflow Compatible Design Available
- Gold Plated Contacts



Performance Specifications

Materials and Finish

Body: PBT Thermoplastic, Black, Purple, or Green
Color, UL 94V-0 Rated

Contacts: Copper Alloy, Gold Plated

Shield: Brass, Nickel Plated

Mechanical Characteristics

Insertion Force: 4.5 kg Max.

Extraction Force: 0.4 kg - 3.5 kg

Durability: 500 Cycles Min.

Electrical Characteristics

Rated Voltage: 12V DC

Rated Current: 2A

Insulation Resistance: 500 Megohms Min. at 500V DC

Contact Resistance:

Before Durability Test: Plug to Terminals: 30 milliohms Max.

After Durability Test: Plug to Terminals: 60 milliohms Max.

Dielectric Withstanding Voltage: 500V RMS AC for 1 Minute

Operating Temperature: -25°C to +85°C

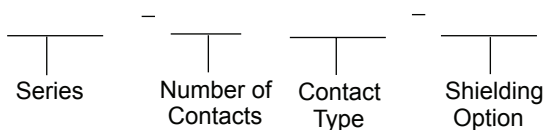
MINI-DINs / CIRCULAR DINs

KMDGX Series

Documentation & Ordering Information

Kycon Part

Part Number Builder



Series

KMDGX - Right Angle PCB Mount Mini-DIN

Number of Contacts

3, 4, 5, 6, 7, 8, 9, (10 Available only with BS option)

Contact Type

S - Receptacle

Shielding Option

N - Non-Shielded

AS - Sides and Back Shielded

BS - Fully Shielded

Plating Option

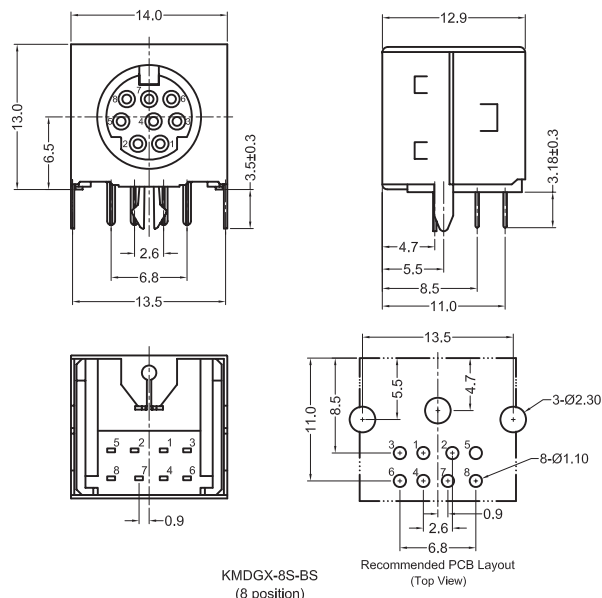
Standard - Gold flash over nickel on contacts.

Tin overnickel on soldertails

KMDGX Series Dimensions

Dimensions in mm

-BS Option (Fully Shielded)



Mouser Electronics

Authorized Distributor

Click to View Pricing, Inventory, Delivery & Lifecycle Information:

[Kycon:](#)

[KMDGX-6S-BS3395C](#)