

4

3

2

1

THIS DRAWING IS UNPUBLISHED.

RELEASED FOR PUBLICATION

© COPYRIGHT

ALL RIGHTS RESERVED.

LOC

DIST


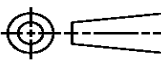
REVISIONS

P	LTR	DESCRIPTION	DATE	DWN	APVD
	C1	ECR-14-002913	26FEB2014	GK	HMR

REPLACED BY OCEAN STYLE APPLICATOR PART
NUMBER 2151095-1

FOR REPLACEMENT PARTS FOR APPLICATOR 1238046
REFER TO ADDITIONAL PAGE(S). SPARE PARTS KIT (IF LISTED)
WILL REMAIN AVAILABLE.

THE REPLACEMENT OCEAN STYLE APPLICATOR HAS THE
SAME TERMINATOR/PRESS INTERFACE AS APPLICATOR
1238046

THIS DRAWING IS A CONTROLLED DOCUMENT.		DWN GOPALAKRISHNA HV		 TE Connectivity			
DIMENSIONS:		CHK RAGHAVENDRA					
		APVD RAGHAVENDRA		NAME SIDE FEED HD-I APPLICATOR			
		PRODUCT SPEC					
		APPLICATION SPEC					
MATERIAL		WEIGHT		SIZE A3	CAGE CODE	DRAWING NO C- 1238046	RESTRICTED TO
FINISH		CUSTOMER DRAWING		SCALE		SHEET 1 OF 2	REV C1

THIS DRAWING IS A CONTROLLED DOCUMENT

DRAWING MADE IN THIRD ANGLE PROJECTION

PART NUMBER	REV	FIRST USED	TERMINATOR	FEED TYPE	DESCRIPTION
1238046-1	C	-	LEADMAKER	MECH POST FEED	CUTS CARRIER
1238046-2	C	-	BENCH	MECH PRE FEED	CUTS CARRIER
1238046-6	C	-	LEADMAKER	MECH POST FEED	CONTINUOUS CARRIER
7-1238046-1	C	-	LEADMAKER	MECH POST FEED	-1 AND SPARE PARTS
7-1238046-2	C	-	BENCH	MECH PRE FEED	-2 AND SPARE PARTS
7-1238046-6	C	-	LEADMAKER	MECH POST FEED	-6 AND SPARE PARTS
7-1238046-7	A	-	-	-	SPARE PARTS KIT

CRIMP DATA (AMP TERMINAL)

TERMINAL NAME: CRIMP TYPE RECEPTACLE CONTACT

CRIMP	SIZE	TYPE	RANGE
WIRE	1.30 [.051 IN]	F	26 TO 22 OR 0.12-0.37mm ²
INSUL	2.03 [.080 IN]	0	1-1.5mm [.039-.059 IN]

WIRE STRIP LENGTH

2.7-3.4 [.106-.134 IN]

APPL INSTRUCTION

408-8322



TERMINAL

APPL SPEC

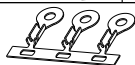
114-5140



FEED

6 [.236 IN]

TERMINALS APPLIED



175102	-	-	-	-
-	-	-	-	-
-	-	-	-	-
-	-	-	-	-
-	-	-	-	-
-	-	-	-	-
-	-	-	-	-
-	-	-	-	-
-	-	-	-	-
-	-	-	-	-

WIRE SIZE mm ² AWG	CRIMP HEIGHT	PIN PN & LENGTH [IN]
0.37mm ² OR 22	0.91 ±0.05 [.036 ±.002 IN]	3-354779-5 [.3165]
0.22mm ² OR 24	0.84 ±0.05 [.033 ±.002 IN]	4-354779-1 [.3195]
0.12mm ² OR 26	0.79 ±0.05 [.031 ±.002 IN]	4-354779-5 [.3215]

LAYOUT
L2403

SET UP GAGE
458637-3

2000

RELEASED FOR PUBLICATION

BY AMP INCORPORATED. ALL RIGHTS RESERVED.

THIS DRAWING IS UNPUBLISHED.
© COPYRIGHT 2000

- RECOMMENDED SPARE PARTS.
- GREASE RAM, CAM, CAM FOLLOWER AND FEED ROD LIGHTLY.
- LUBRICATE DAILY PER THE APPLICATOR INSTRUCTION SHEET SUPPLIED WITH THE APPLICATOR.

VIEW B ROTATED 180°

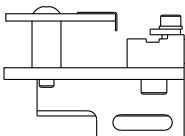
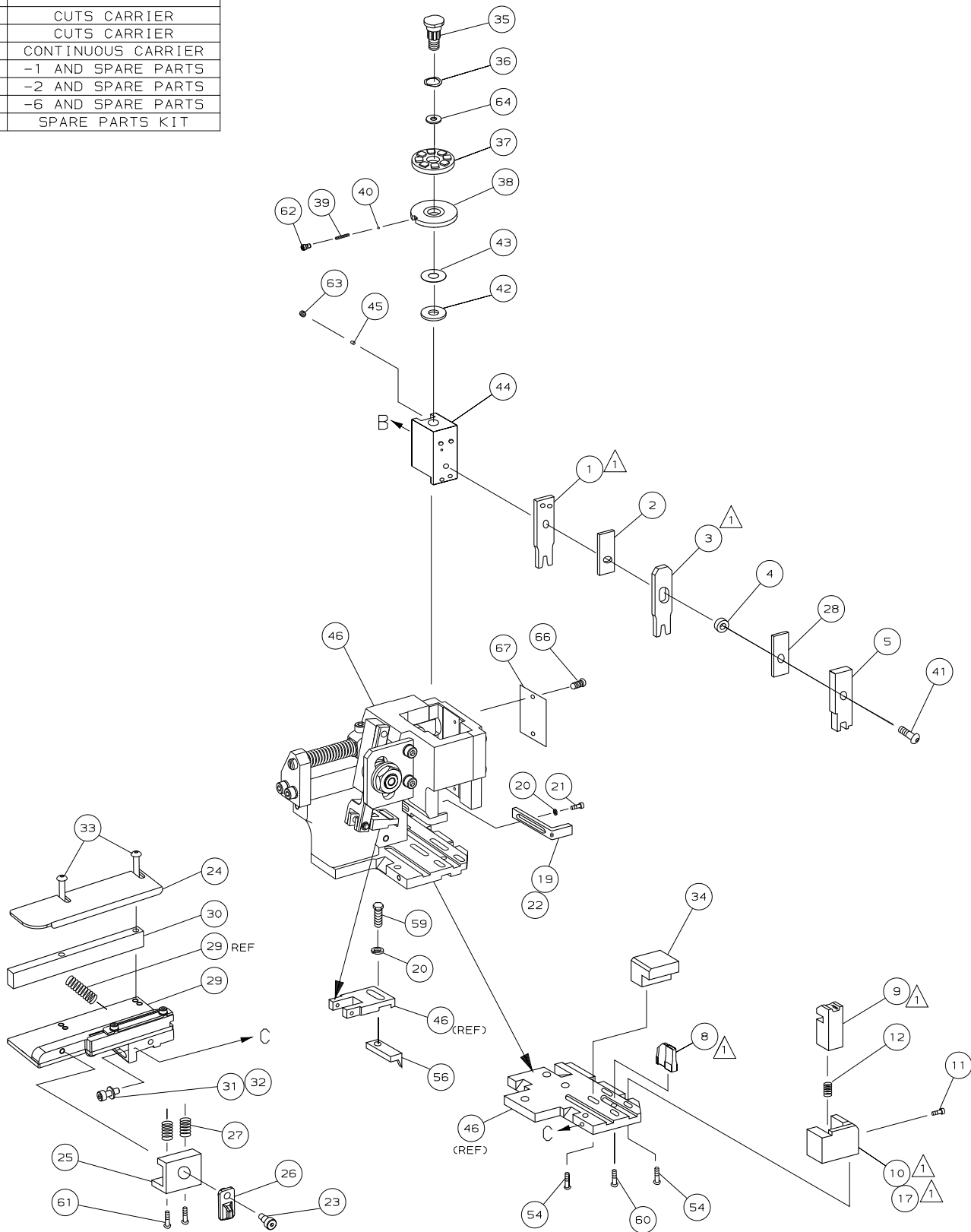
POST FEED 40 mm STROKE	POST FEED 30 mm STROKE	PRE FEED 30 mm STROKE	PRE FEED 40 mm STROKE
LOC A DIST 66			

AMP 1756 REV 3-92 25-AUG-06 10:13:43 b8420

1238046

1238046

/nd/mbaum/middleton



QTY REQD PER ASSY	PARTS LIST
DO NOT SCALE PRINT. TOLERANCES UNLESS OTHERWISE SPECIFIED: 1 PLC DEC ±0.5 [.02 IN] 2 PLC DEC ±- 3 PLC DEC ±- ANGLES ±- TE INOV02 SURF TEXTURE. REMOVE BURRS, BREAK SHARP EDGES RO.38 MAX	MATL - HT TR - FIN - DR V.FURLER 19JUN00 APP 19JUN00 T.ELBIN CHK - REL - NAME SIDE FEED HD-I APPLICATOR SCALE - DWG NO 1238046 SHEET 1 of 1 REV C

-	1	1	1	1	1	1	1238046	PRINT, APPLICATOR LOG SHEET	73
-	1	1	1	1	1	1	1338705-1	DOCUMENTATION PACKAGE	71
-	-	-	-	-	-	-	-	-	70
-	-	-	-	-	-	-	-	-	69
-	-	-	-	-	-	-	-	-	68
-	1	1	1	1	1	1	461264-1	PLATE, IDENTIFICATION	67
-	2	2	2	2	2	2	21017-2	SCR, DRIVE (#2x.19) ID PLATE	66
-	-	-	-	-	-	-	-	-	65
-	1	1	1	1	1	1	986950-1	WASHER, FLAT PRECISION	64
-	1	1	1	1	1	1	3-18031-0	SCR, SKT SET (M6X6) RAM	63
-	1	1	1	1	1	1	18023-9	SCR, SHC (M4X6) INS DISC	62
-	2	2	2	2	2	2	2-18032-5	SCR, SOC SET (M5X20) DRAG	61
-	1	1	1	1	1	1	18024-7	SCR, BHC (M4X10) ANVIL	60
-	1	1	1	1	1	1	5-18022-2	SCR, HEX (M4X8) FEED FINGER	59
-	-	-	-	-	-	-	-	-	58
-	-	-	-	-	-	-	-	-	57
-	1	1	1	1	1	1	1338685-1	PAWL, FEED	56
-	-	-	-	-	-	-	-	-	55
-	4	4	4	4	4	4	18024-8	SCR, BHC (M4x12) SHEAR HOLDER	54
-	-	-	-	-	-	-	-	-	53
-	-	-	-	-	-	-	-	-	52
-	-	-	-	-	-	-	-	-	51
-	-	-	-	-	-	-	-	-	50
-	1	1	1	1	1	1	18024-3	SCR, BHC (M3X10) CAM	49
-	-	-	-	-	-	-	-	-	48
-	1	-	1	-	1	-	1338675-1	CAM, PRE FEED 30 & 40 mm ST	47
-	1	1	1	1	1	1	1320999-3	APPLICATOR BASIC SUBASSY	46
-	1	1	1	1	1	1	690191-1	PLUG, NYLON	45
-	1	1	1	1	1	1	1338660-1	RAM	44
-	1	1	1	1	1	1	690125-1	WASHER, LAMINATED	43
-	1	1	1	1	1	1	690124-1	WASHER, RAM	42
-	1	1	1	1	1	1	2-18024-6	SCR, BHC (M8X25) RAM	41
-	1	1	1	1	1	1	23241-1	BALL, STEEL	40
-	1	1	1	1	1	1	2-22278-7	SPRING, COMPRESSION	39
-	1	1	1	1	1	1	1320922-1	DISC, INSULATION	38
-	1	1	1	1	1	1	354777-1	WIRE DISC, PLASTIC	37
-	1	1	1	1	1	1	22480-5	WASHER, SPRING	36
-	1	1	1	1	1	1	690212-1	POST, RAM	35
-	1	1	1	1	1	1	1424190-1	STOP, WIRE	34
-	2	2	2	2	2	2	18024-9	SCR, BHC (M4X20) STRIP GUIDE	33
-	1	1	1	1	1	1	18027-2	WASHER, FLAT (M4)	32
-	1	1	1	1	1	1	1-18023-2	SCR, SKT CAP (M4X12) MOUNT BLOCK	31
-	1	1	1	1	1	1	1-1320908-1	SPACER, STRIP GUIDE	30
-	1	1	1	1	1	1	1633073-1	STRIP GUIDE PLATE ASSY	29
-	1	1	1	1	1	1	1-455888-5	SPACER, FRONT SHEAR DEP	28
-	2	2	2	2	2	2	1-22284-0	SPRING, DRAG	27
-	1	1	1	1	1	1	356835-1	LEVER, DRAG RELEASE	26
-	1	1	1	1	1	1	240792-1	DRAG, TERMINAL	25
-	1	1	1	1	1	1	5-690440-4	PLATE, STRIP GUIDE	24
-	1	1	1	1	1	1	980371-4	SCR, SHC SHLD	23
-	1	-	1	-	-	-	1-690472-1	STRIPPER	22
-	1	1	1	1	1	1	1-18023-1	SCR, SHC (M4X10) STRIPPER	21
-	4	4	4	4	4	4	18025-2	WASHER, LOCK (M4) STRIPPER	20
-	-	1	-	-	1	-	690472-1	STRIPPER	19
-	-	-	-	-	-	-	-	-	18
-	-	-	-	-	-	-	-	-	17
-	-	-	-	-	-	-	-	-	16
-	-	-	-	-	-	-	-	-	15
-	-	-	-	-	-	-	-	-	14
-	-	-	-	-	-	-	-	-	13
-	1	1	1	1	1	1	3-22280-3	SPRING, SHEAR	12
-	1	1	1	1	1	1	356885-4	STOP, SHEAR	11
-	-	1	1	-	1	1	1320921-1	HOLDER, SHEAR, FRONT (CUT)	10
-	1	1	1	1	1	1	462006-1	SHEAR, FLOAT (FRONT)	9
-	1	2	2	2	1	1	1338701-2	ANVIL	8
-	-	-	-	-	-	-	-	-	7
-	-	-	-	-	-	-	-	-	6
-	1	1	1	1	1	1	2-455889-0	DEPRESSOR, SHEAR (FRONT)	5
-	1	1	1	1	1	1	2-238011-0	SPACER, BLOCK CRIMPER	4
-	1	2	2	2	1	1	844991-7	CRIMPER, INSULATION	3
-	1	1	1	1	1	1	1-455888-8	SPACER, CRIMPER	2
-	1	2	2	2	1	1	5-568176-8	CRIMPER, WIRE	1
-77	-76	-72	-71	-6	-2	-1	PART NO	DESCRIPTION	ITEM NO

REVISION OF EACH ASSY NO (WHEN BLANK, USE DWG REVISION)

QTY REQD PER ASSY	PARTS LIST
DO NOT SCALE PRINT. TOLERANCES UNLESS OTHERWISE SPECIFIED: 1 PLC DEC ±0.5 [.02 IN] 2 PLC DEC ±- 3 PLC DEC ±- ANGLES ±- TE INOV02 SURF TEXTURE. REMOVE BURRS, BREAK SHARP EDGES RO.38 MAX	MATL - HT TR - FIN - DR V.FURLER 19JUN00 APP 19JUN00 T.ELBIN CHK - REL - NAME SIDE FEED HD-I APPLICATOR SCALE - DWG NO 1238046 SHEET 1 of 1 REV C

CUSTOMER AND ASSEMBLY DRAWING