

# TA76433FC

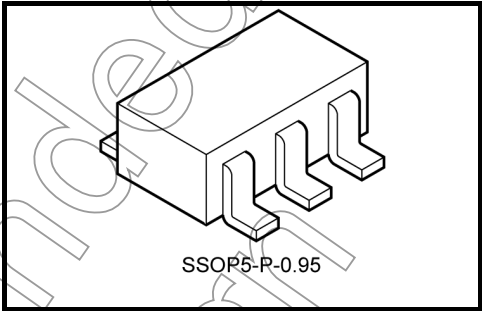
## High-Precision Shunt Regulators with Adjustable Output Voltage

Due to the increasing requirement for low power dissipation levels, 3-V power supply systems in electronic equipment are now in greater demand than conventional 5-V power supply systems. Toshiba has developed the TA76433FC, a high-precision shunt regulator with adjustable output voltage is aimed for use in even lower voltage applications.

It differs from the conventional shunt regulator (TA76431/432 series) of our company, the power supply input terminal which became separate of the cathode terminal is set up.

Since the cathode terminal of the detection side and the input terminal of the power supply side is separate, a cathode terminal can operate from 0.2 V.

It is suitable for the secondary side difference amplifier of the switching regulator of 1.8 V to 2 V class.



Weight: 0.014 g (typ.)

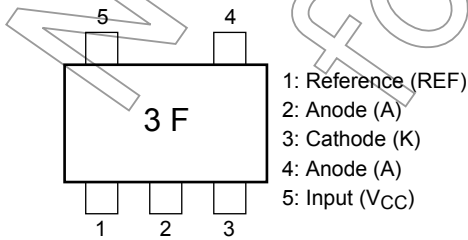
### Features

- Separate power supply input pin ( $V_{CC}$ ) and cathode pin (K)
- Precision reference voltage:  $V_{REF} = 1.26\text{ V} \pm 1.4\%$  ( $T_a = 25^\circ\text{C}$ )
- Maximum cathode voltage: 15 V
- Maximum cathode current: 20 mA
- Cathode voltage: 0.2 to 14 V
- Cathode current: 0.4 to 20 mA
- Operating temperature:  $T_a = -40$  to  $85^\circ\text{C}$
- Packages: SMV can be mounted on a  $3.1 \times 3.0$  mm space.

### How to Order

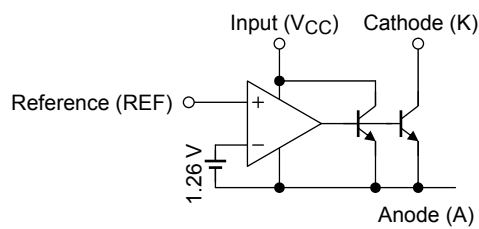
Product No.	Package Type	Package Type and Capacity
TA76433FC	SMV (surface-mount type)	On cut tape (TE85L): 100/tape section
TA76433FC (TE85L)		Embossed tape (TE85L): 3000/tape section

### Pin Assignment/Marking

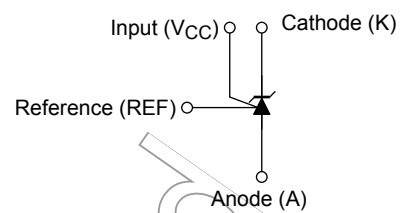


Pin No.	Symbol	Description
1	REF	Reference voltage terminal of 1.26 V
2	A	Ground terminal
3	K	Constant output voltage terminal
4	A	Ground terminal
5	$V_{CC}$	Power supply input terminal

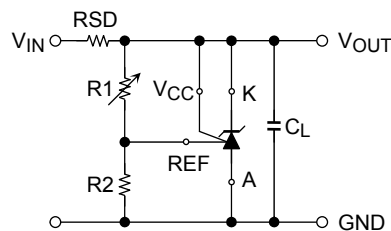
## Functional Block Diagram



## Circuit Symbol



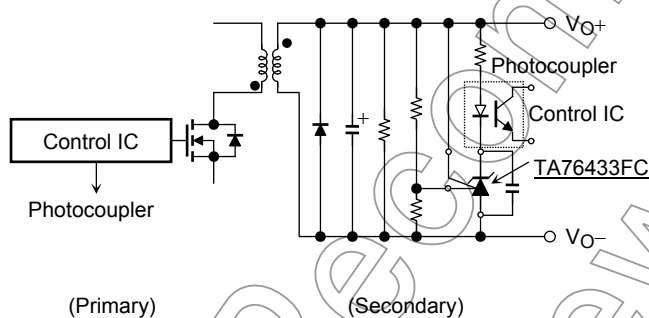
## Typical Application Circuits



$$V_{OUT} = V_{REF} \left( 1 + \frac{R1}{R2} \right) + I_{REF} \cdot R1$$

## Application Circuit Example

### Error amplification circuit for switching power supply



The circuit amplifies the difference (a changed value) of the reference voltage of a shunt regulator and the output voltage of a switching regulator, and is fed back to a primary side through a photocoupler.

## Precautions during Use

- (1) TA76433FC  
These products contain MOS elements. Please take care to avoid generating static electricity when handling these devices.
- (2) TA76433FC  
The oscillation frequency of these devices is determined by the value of the capacitor connected between the anode and the cathode.  
When establishing maximum operating condition parameters, please derate the maximum rating values specified in these datasheets so as to allow an operational safety margin.
- (3) Precautions when handling anode pin of TA76433FC  
Pin 2 and pin 4 should normally be shorted together. Do not leave pin 4 open and use pin 2 only.

## Absolute Maximum Ratings (Ta = 25°C)

Characteristics	Symbol	Rating	Unit
Power supply voltage	V <sub>CC</sub>	15	V
Cathode voltage	V <sub>KA</sub>	V <sub>CC</sub>	V
Reference voltage	V <sub>REF</sub>	7	V
Cathode current	I <sub>K</sub>	20	mA
Cathode-anode reverse current	-I <sub>K</sub>	10	mA
Reference current	I <sub>REF</sub>	50	μA
Reference-anode reverse current	-I <sub>REF</sub>	10	mA
Power supply current	I <sub>CC</sub>	3	mA
Power dissipation	P <sub>D</sub>	0.2	W
		0.38 (Note)	
Thermal resistance	R <sub>th</sub>	625	°C/W
		328 (Note)	
Operating temperature	T <sub>opr</sub>	-40~85	°C
Junction temperature	T <sub>j</sub>	150	°C
Storage temperature	T <sub>stg</sub>	-55~150	°C

Note 1: Mounted on a glass-epoxy substrate: 30 mm × 30 mm × 0.8 mm (Cu pad area 50 mm<sup>2</sup>)

Note 2: Using continuously under heavy loads (e.g. the application of high temperature/current/voltage and the significant change in temperature, etc.) may cause this product to decrease in the reliability significantly even if the operating conditions (i.e. operating temperature/current/voltage, etc.) are within the absolute maximum ratings and the operating ranges.

Please design the appropriate reliability upon reviewing the Toshiba Semiconductor Reliability Handbook ("Handling Precautions"/Derating Concept and Methods) and individual reliability data (i.e. reliability test report and estimated failure rate, etc.).

## Recommended Operating Conditions

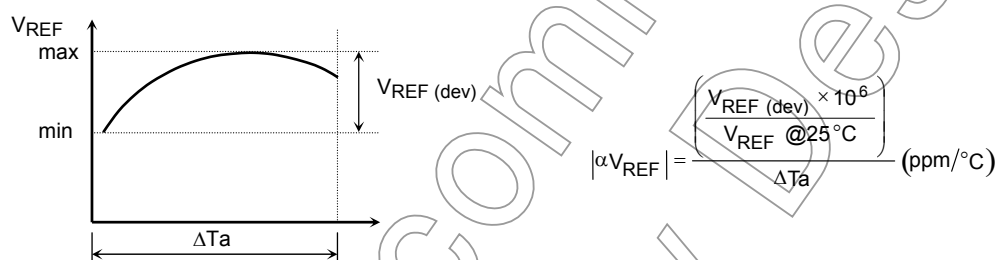
Characteristics	Symbol	Min	Typ.	Max	Unit
Power supply voltage	V <sub>CC</sub>	V <sub>REF</sub>	—	14	V
Cathode voltage	V <sub>KA</sub>	0.2	—	V <sub>CC</sub>	V
Cathode current	I <sub>K</sub>	0.4	—	15	mA
Operating temperature	T <sub>opr</sub>	-40	—	85	°C

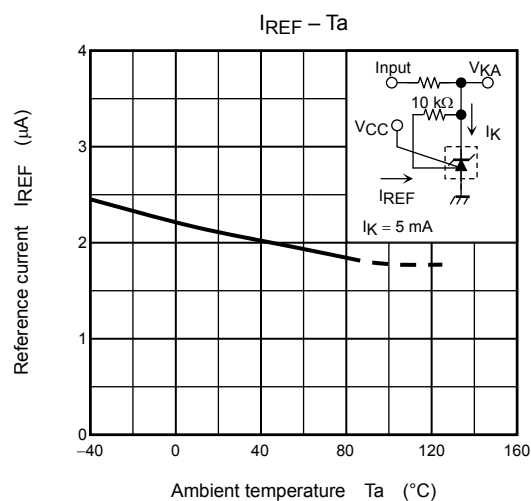
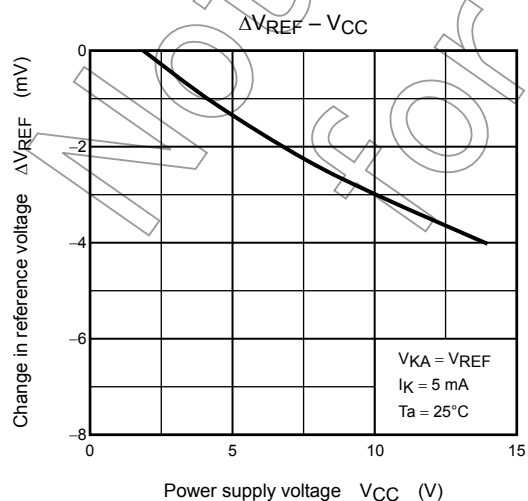
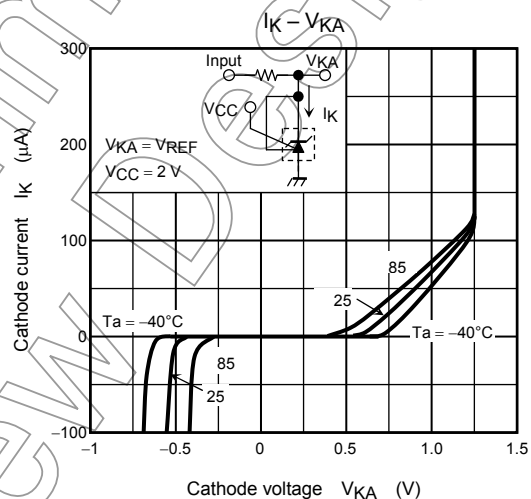
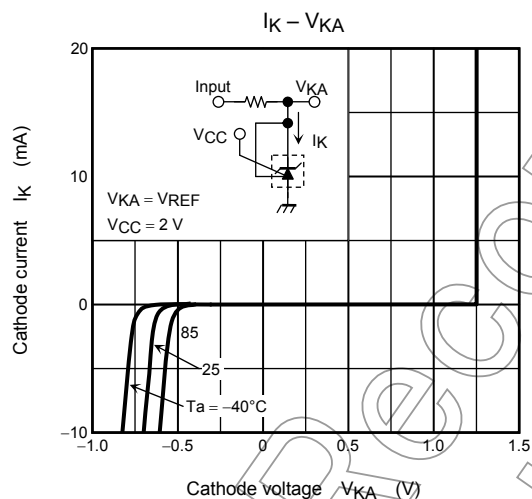
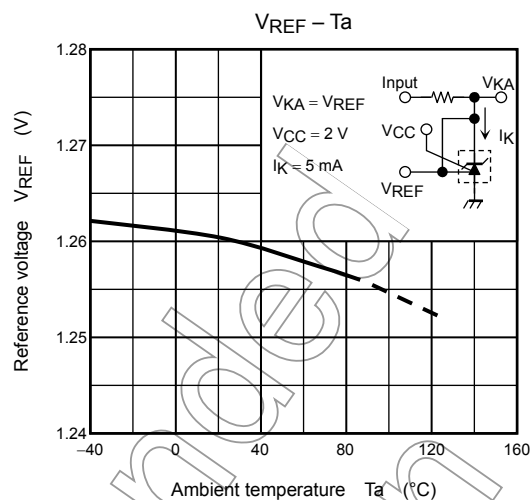
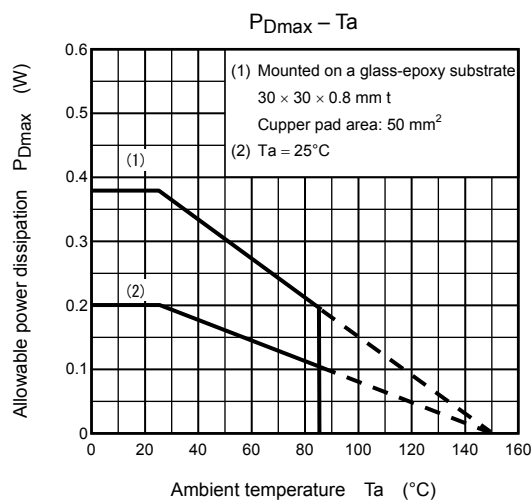
**Electrical Characteristics (Unless otherwise specified,  $V_{CC} = 2\text{ V}$ ,  $I_K = 5\text{ mA}$ ,  $T_a = 25^\circ\text{C}$ )**

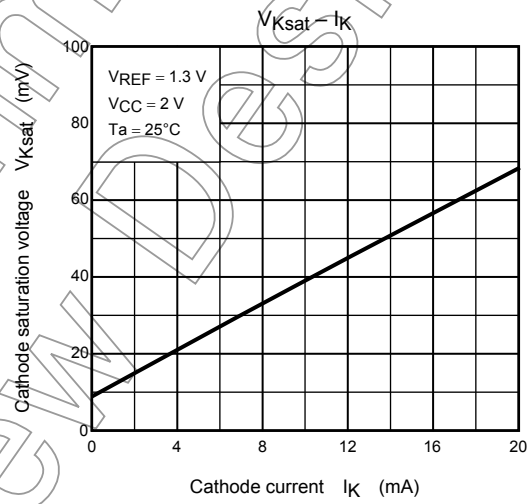
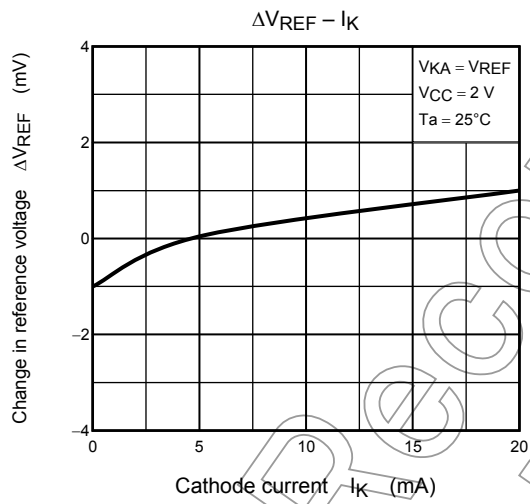
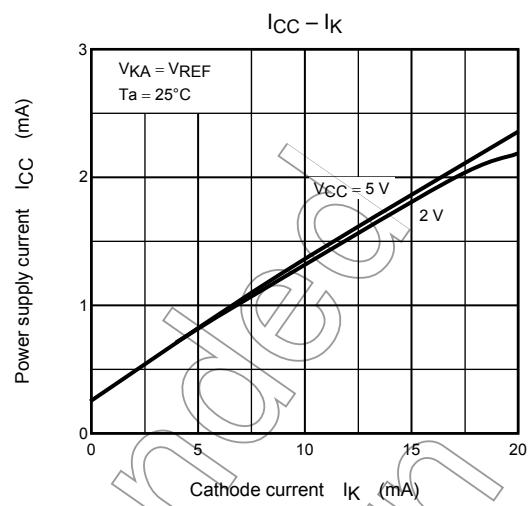
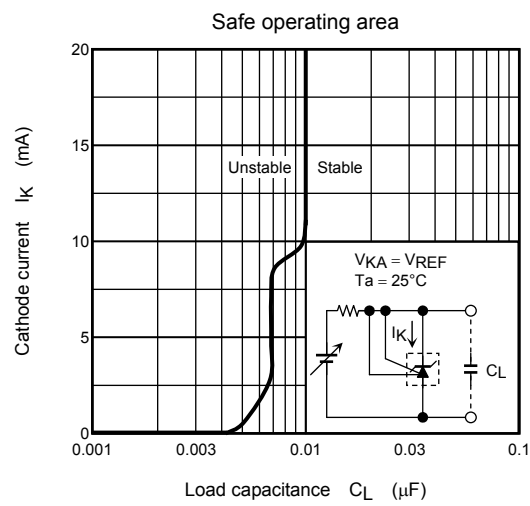
Characteristics	Symbol	Test Condition	Min	Typ.	Max	Unit
Reference voltage	$V_{REF}$	$V_{KA} = V_{REF}$	1.242	1.26	1.278	V
Deviation of reference input voltage overtemperature	$V_{REF}(\text{dev})$	$0^\circ\text{C} \leq T_a \leq 85^\circ\text{C}$ , $V_{KA} = V_{REF}$	—	5	15	mV
Ratio of change in reference input voltage to the change in power supply voltage	$\Delta V_{REF}/\Delta V_{CC}$	$1.8\text{ V} \leq V_{CC} \leq 15\text{ V}$	—	-0.3	-1.5	mV/V
Reference Input current	$I_{REF}$	$V_{KA} = V_{REF}$ , $R_1 = 10\text{ k}\Omega$ , $R_2 = \infty$	—	2	4	$\mu\text{A}$
Deviation of reference input current over temperature	$I_{REF}(\text{dev})$	$0^\circ\text{C} \leq T_a \leq 85^\circ\text{C}$ , $V_{KA} = V_{REF}$ , $R_1 = 10\text{ k}\Omega$ , $R_2 = \infty$	—	0.3	1.2	$\mu\text{A}$
Minimum cathode current for regulation	$I_{Kmin}$	$V_{KA} = V_{REF}$	—	200	400	$\mu\text{A}$
Cathode saturation voltage	$V_{Ksat}$	$V_{REF} = 1.3\text{ V}$ , $I_K = 5\text{ mA}$	—	0.05	0.2	V
Off-State cathode current	$I_{Koff}$	$V_{KA} = V_{CC} = 15\text{ V}$ , $V_{REF} = 0\text{ V}$	—	—	1.0	$\mu\text{A}$
Dynamic impedance	$ Z_{KA} $	$0.4\text{ mA} \leq I_K \leq 15\text{ mA}$ , $f \leq 1\text{ kHz}$	—	0.2	0.5	$\Omega$

The deviation parameters  $V_{REF}(\text{dev})$  and  $I_{REF}(\text{dev})$  are defined as the maximum variation of the  $V_{REF}$  and  $I_{REF}$  over the rated temperature range.

The average temperature coefficient of the  $V_{REF}$  is defined as:



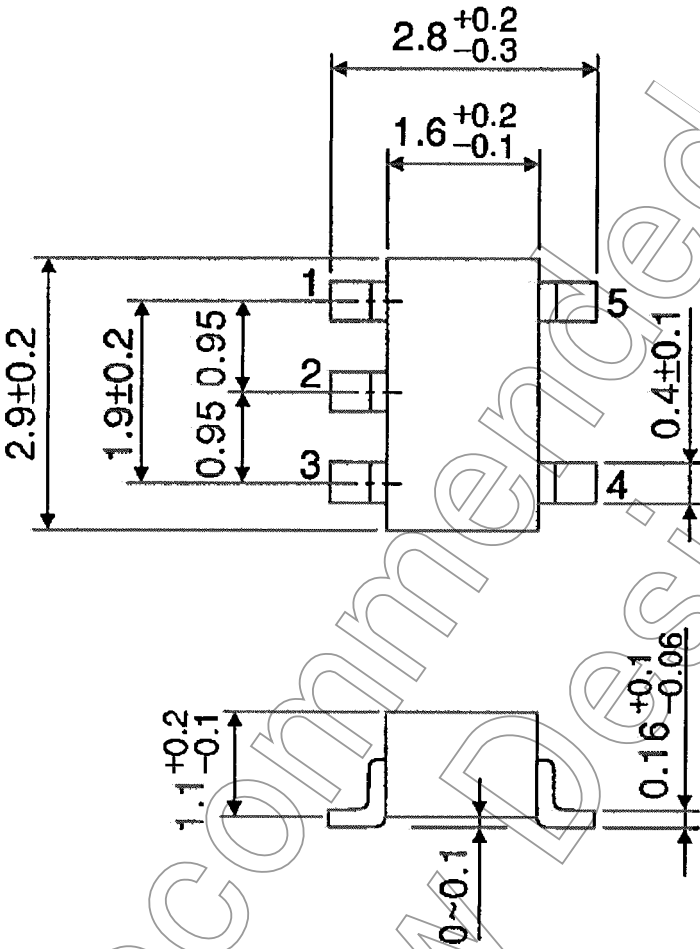




Package Dimensions

SSOP5-P-0.95

Unit : mm



Weight: 0.014 g (typ.)

## RESTRICTIONS ON PRODUCT USE

- Toshiba Corporation, and its subsidiaries and affiliates (collectively "TOSHIBA"), reserve the right to make changes to the information in this document, and related hardware, software and systems (collectively "Product") without notice.
- This document and any information herein may not be reproduced without prior written permission from TOSHIBA. Even with TOSHIBA's written permission, reproduction is permissible only if reproduction is without alteration/omission.
- Though TOSHIBA works continually to improve Product's quality and reliability, Product can malfunction or fail. Customers are responsible for complying with safety standards and for providing adequate designs and safeguards for their hardware, software and systems which minimize risk and avoid situations in which a malfunction or failure of Product could cause loss of human life, bodily injury or damage to property, including data loss or corruption. Before customers use the Product, create designs including the Product, or incorporate the Product into their own applications, customers must also refer to and comply with (a) the latest versions of all relevant TOSHIBA information, including without limitation, this document, the specifications, the data sheets and application notes for Product and the precautions and conditions set forth in the "TOSHIBA Semiconductor Reliability Handbook" and (b) the instructions for the application with which the Product will be used with or for. Customers are solely responsible for all aspects of their own product design or applications, including but not limited to (a) determining the appropriateness of the use of this Product in such design or applications; (b) evaluating and determining the applicability of any information contained in this document, or in charts, diagrams, programs, algorithms, sample application circuits, or any other referenced documents; and (c) validating all operating parameters for such designs and applications. **TOSHIBA ASSUMES NO LIABILITY FOR CUSTOMERS' PRODUCT DESIGN OR APPLICATIONS.**
- Product is intended for use in general electronics applications (e.g., computers, personal equipment, office equipment, measuring equipment, industrial robots and home electronics appliances) or for specific applications as expressly stated in this document. Product is neither intended nor warranted for use in equipment or systems that require extraordinarily high levels of quality and/or reliability and/or a malfunction or failure of which may cause loss of human life, bodily injury, serious property damage or serious public impact ("Unintended Use"). Unintended Use includes, without limitation, equipment used in nuclear facilities, equipment used in the aerospace industry, medical equipment, equipment used for automobiles, trains, ships and other transportation, traffic signaling equipment, equipment used to control combustions or explosions, safety devices, elevators and escalators, devices related to electric power, and equipment used in finance-related fields. Do not use Product for Unintended Use unless specifically permitted in this document.
- Do not disassemble, analyze, reverse-engineer, alter, modify, translate or copy Product, whether in whole or in part.
- Product shall not be used for or incorporated into any products or systems whose manufacture, use, or sale is prohibited under any applicable laws or regulations.
- The information contained herein is presented only as guidance for Product use. No responsibility is assumed by TOSHIBA for any infringement of patents or any other intellectual property rights of third parties that may result from the use of Product. No license to any intellectual property right is granted by this document, whether express or implied, by estoppel or otherwise.
- **ABSENT A WRITTEN SIGNED AGREEMENT, EXCEPT AS PROVIDED IN THE RELEVANT TERMS AND CONDITIONS OF SALE FOR PRODUCT, AND TO THE MAXIMUM EXTENT ALLOWABLE BY LAW, TOSHIBA (1) ASSUMES NO LIABILITY WHATSOEVER, INCLUDING WITHOUT LIMITATION, INDIRECT, CONSEQUENTIAL, SPECIAL, OR INCIDENTAL DAMAGES OR LOSS, INCLUDING WITHOUT LIMITATION, LOSS OF PROFITS, LOSS OF OPPORTUNITIES, BUSINESS INTERRUPTION AND LOSS OF DATA, AND (2) DISCLAIMS ANY AND ALL EXPRESS OR IMPLIED WARRANTIES AND CONDITIONS RELATED TO SALE, USE OF PRODUCT, OR INFORMATION, INCLUDING WARRANTIES OR CONDITIONS OF MERCHANTABILITY, FITNESS FOR A PARTICULAR PURPOSE, ACCURACY OF INFORMATION, OR NONINFRINGEMENT.**
- Do not use or otherwise make available Product or related software or technology for any military purposes, including without limitation, for the design, development, use, stockpiling or manufacturing of nuclear, chemical, or biological weapons or missile technology products (mass destruction weapons). Product and related software and technology may be controlled under the Japanese Foreign Exchange and Foreign Trade Law and the U.S. Export Administration Regulations. Export and re-export of Product or related software or technology are strictly prohibited except in compliance with all applicable export laws and regulations.
- Please contact your TOSHIBA sales representative for details as to environmental matters such as the RoHS compatibility of Product. Please use Product in compliance with all applicable laws and regulations that regulate the inclusion or use of controlled substances, including without limitation, the EU RoHS Directive. TOSHIBA assumes no liability for damages or losses occurring as a result of noncompliance with applicable laws and regulations.