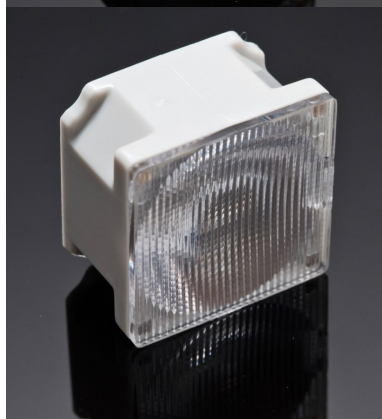




Ordering number FCA10328_CRS-SS

Family	Rose	FWHM	12 degrees
Type	Assembly	Efficiency	(simulated) 0 %
LED	XR-E	cd/Im	13.650
Color	Grey	Gerber File	Available
Diameter	21.6 + 21.6 mm		
Height	13.8 mm		
Style	Square		
Optic Material	PC		
Holder Material	PC		
Fastening	Tape		
Status	Ready		



Ordering number 4FA11147_CRS-O-90

Family	Rose	FWHM	12+48 degrees
Type	Assembly	Efficiency	(simulated) 0 %
LED	XR-E	cd/Im	-
Color	Grey	Gerber File	Available
Diameter	21.6 + 21.6 mm		
Height	13.8 mm		
Style	Square		
Optic Material	PC		
Holder Material	PC		
Fastening	Tape		
Status	Removed		



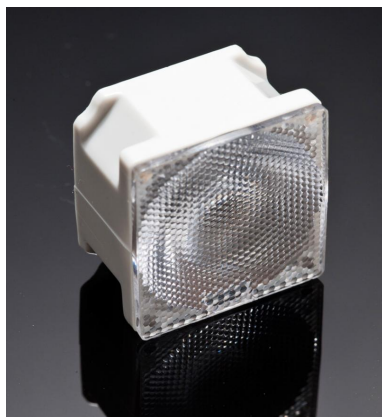
Ordering number FCA10303_CRS-RS

Family	Rose	FWHM	13 degrees
Type	Assembly	Efficiency	86 %
LED	XR-E	cd/Im	33.600
Color	Grey	Gerber File	Available
Diameter	21.6 + 21.6 mm		
Height	13.8 mm		
Style	Square		
Optic Material	PC		
Holder Material	PC		
Fastening	Tape		
Status	Ready		



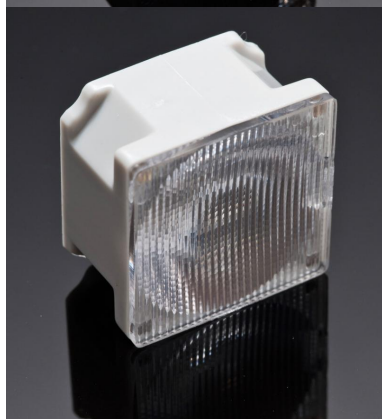
Ordering number FCA10304_CRS-D

Family	Rose	FWHM	15 degrees
Type	Assembly	Efficiency	86 %
LED	XR-E	cd/Im	7.100
Color	Grey	Gerber File	Available
Diameter	21.6 + 21.6 mm		
Height	13.8 mm		
Style	Square		
Optic Material	PC		
Holder Material	PC		
Fastening	Tape		
Status	Ready		



Ordering number FCA10305_CRS-M

Family	Rose	FWHM	31 degrees
Type	Assembly	Efficiency	85 %
LED	XR-E	cd/Im	2.540
Color	Grey	Gerber File	Available
Diameter	21.6 + 21.6 mm		
Height	13.8 mm		
Style	Square		
Optic Material	PC		
Holder Material	PC		
Fastening	Tape		
Status	Ready		



Ordering number FCA10306_CRS-O

Family	Rose	FWHM	44+13 degrees
Type	Assembly	Efficiency	78 %
LED	XR-E	cd/Im	3.200
Color	Grey	Gerber File	Available
Diameter	21.6 + 21.6 mm		
Height	13.8 mm		
Style	Square		
Optic Material	PC		
Holder Material	PC		
Fastening	Tape		
Status	Ready		



Ordering number FA10343_CRS-WW

Family	Rose	FWHM	59 degrees
Type	Assembly	Efficiency	(simulated) 0 %
LED	XR-E	cd/Im	0.780
Color	Grey	Gerber File	Available
Diameter	21.6 + 21.6 mm		
Height	14.54 mm		
Style	Square		
Optic Material	PC		
Holder Material	PC		
Fastening	Tape		
Status	Ready		

NOTE: The typical divergence will be changed by different color, chip size and chip position tolerance. The typical total divergence is the full angle measured where the luminous intensity is half of the peak value.



PRODUCT DATASHEET

Rose series

last update 10/8/2012



GENERAL INFORMATION

- Product series especially designed & optimized for XR-E series of LEDs.
- Special care taken to make light distribution as uniform as possible.
- Lens material optical grade PC with high UV and temperature resistance (120 degrees of Celcius / 248 degrees of Fahrenheit). Allows use of high current and temperature conditions.

Please find more information about used materials from below:

http://ledil.fi/sites/default/files/Documents/Technical/Material/PC%20Makrolon%202400_2407_2456_2458-UL.pdf

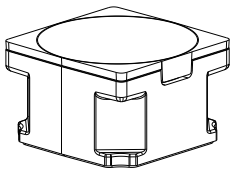
- Optic holder molded by high quality PC material (120 dergees of Celcius / 248 degrees of Fahrenheit).
- Fastening to heat sink with a PU foam adhesive tape of automotive grade. Please find fastening details by clicking link: http://www.ledil.com/datasheets/DataSheet_TAPE.pdf

NOTE 1: We advise customer to ensure the suitability and sufficiency of the bond in the end product. For example, mechanical stress, vibration and holes on the surface of the circuit board weaken the strength of the tape.

NOTE 2: Assembly to the surface must be made straight, so the tape bonds constant and balanced with fastening surface. Slanted assembly might cause unbalanced bond to the surface. All surfaces where tape is applied must be clean, dry and free from grease and dirt.

If cleaning of PCB surfaces is needed, please follow strictly the cleaning instructions of your LED manufacturer - this is important as cleaning shall under no circumstances damage LEDs or other electronics components on the PCB.

Further note that optical components shall not be cleaned with any chemicals - only micro fiber cloth may be used to remove fingerprints or other traces from handling.

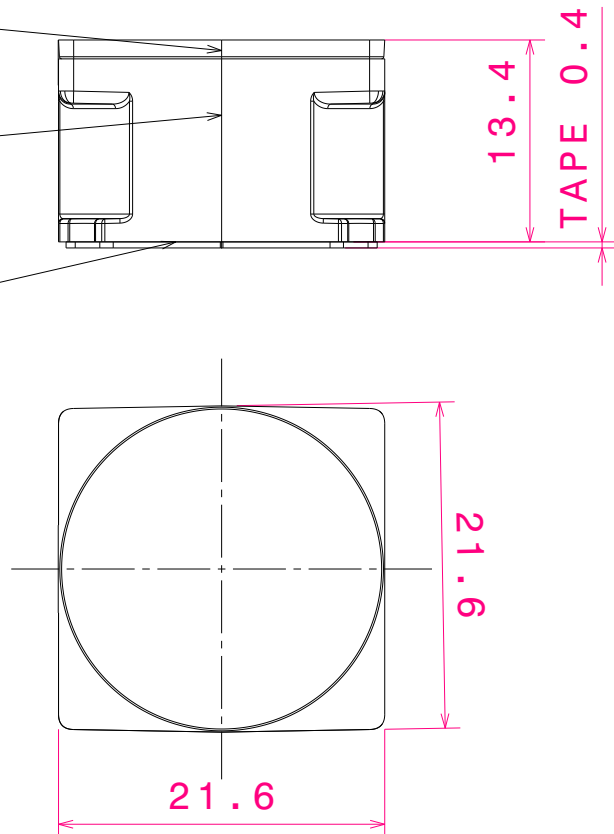


Isometric view
Scale: 1:1

Lens ROSE

Holder

Adhesive Tape



MATERIALS

LENS: PC

HOLDER: PC

Tape: PU foam with PSA adhesive

This drawing is our property.
It can't be reproduced
or communicated without
our written agreement.



L
T
F
F

e
e
i
N
n

d
h

DRAWING TITLE

Datasheet CRS assy

DRAWN BY

p

DATE

05.11.2008

CHECKED BY

H

DATE

10.10.2006

DESIGNED BY

HH

DATE

10.10.2006

SIZE

A4

DRAWING NUMBER

REV

1

SCALE

2:1

WEIGHT (g)

-

SHEET

1 / 1

D

A