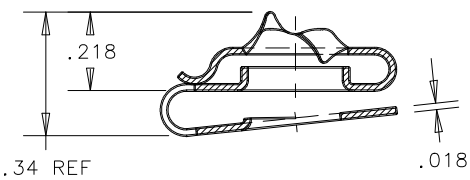
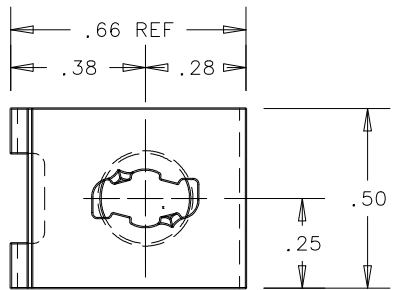
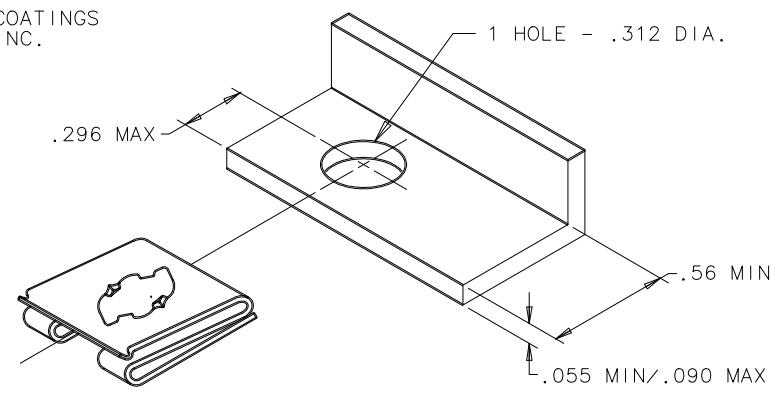


REV.	DATE	BY-CHKD	REVISIONS	PART No.	MATERIAL	FINISH	WEIGHT PER 1000 IN. POUNDS		
0	29MAR2001	RJB JCK	PRN: P2001-0035	82-47-101-15	STEEL	DACROTIZED*	6.06		



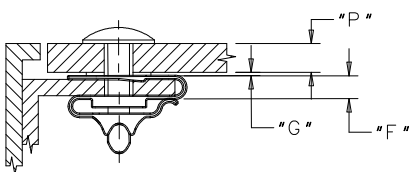
*TRADE NAME OF METAL COATINGS
INTERNATIONAL, INC.



TO SELECT PROPER GRIP STUD FOR YOUR APPLICATION:

INSTALLATION EXAMPLE "A"

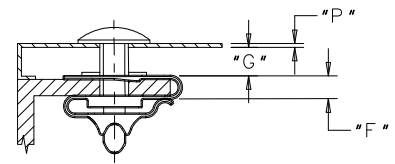
(WHEN "G" IS .033 OR LESS)



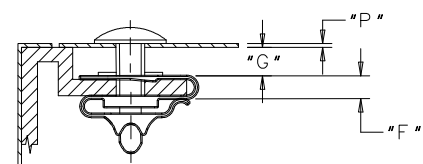
WHEN "G" IS .033 OR LESS,
TOTAL MATERIAL THICKNESS
(GRIP OF STUD) EQUALS;
 $P+F+.050$ (CONSTANT).

INSTALLATION EXAMPLE "B"

(WHEN "G" IS .034 OR GREATER)



PAN TYPE PANELS



DIMPLED OR RECESSED PANELS

WHEN "G" IS .034 OR GREATER, TOTAL MATERIAL THICKNESS
(GRIP OF STUD) EQUALS; $P+F+G+.017$ (CONSTANT).