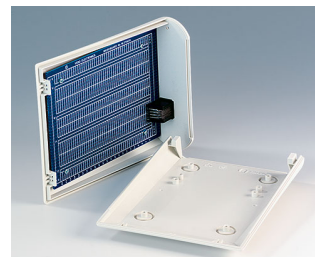


COMTEC

Ergonomic sloping front plastic enclosures

Modern, flat styling characterizes the COMTEC family of plastic enclosures. Rounded surfaces give the users a soft feeling and emphasize the ease of use.

- ergonomic keypad enclosures with operating face inclined at 10°, a real asset when operating and reading
- large area for interfaces at the top, ideal for D-sub-plug connectors, round connectors etc.
- ideal for desktop or wall mounted electronics
- seven sizes, two colors
- flat or raised bottom part for large-volume components
- version I without battery compartment lid
- version II with battery compartment lid
- screw-in battery cradles 4 x AA, 1 x 9 V or 2 x 9 V cells are ordered separately for versions II cases
- recess in top for a membrane keypad or label
- protection class IP 40
- self-adhesive case feet ensure reliable desk-top positioning
- wall suspension element as accessory
- internal fastening pillars for PCBs and components



COMTEC

Applications and Examples

- Data collection terminals
- Communications devices
- Access control, security
- Medical, laboratory, wellness
- Health care
- Point-of-sale systems
- Measuring and controlling
- Industrial regulation



Controller for LED lighting in image processing and microscopy



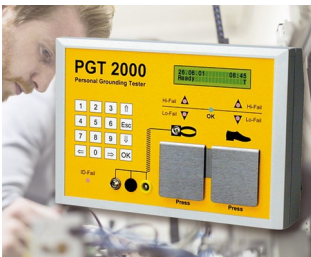
EMG bio-feedback for incontinence diagnostics and therapy



Stationary system for long-term EEG recordings



System for leak detection in caravans and campers



System for preventing electrostatic charges

View Customizing Options

What do you still need for your own very personal product? We can supply enclosures and tuning knobs with all necessary modifications for fitting your electronic components.
Customizing options for Comtec

COMTEC



Machining



Lacquering



Printing



Laser marking



Decor foils



Special material



RFI/EMI shielding



Installation / Assembly
of accessories

Select Versions



A0612007
COMTEC 120 F, Vers. I
ABS (UL 94 HB)
off-white RAL 9002
4.72"x5.91"x1.69"
IP 40



A0612009
COMTEC 120 F, Vers. I
ABS (UL 94 HB)
black RAL 9005
4.72"x5.91"x1.69"
IP 40



A0612107
COMTEC 120 H, Vers. I
ABS (UL 94 HB)
off-white RAL 9002
4.72"x5.91"x2.47"
IP 40



A0612109
COMTEC 120 H, Vers. I
ABS (UL 94 HB)
black RAL 9005
4.72"x5.91"x2.47"
IP 40



A0615007
COMTEC 150 F, Vers. I
ABS (UL 94 HB)
off-white RAL 9002
5.91"x7.87"x2.03"
IP 40



A0615009
COMTEC 150 F, Vers. I
ABS (UL 94 HB)
black RAL 9005
5.91"x7.87"x2.03"
IP 40



A0615017
COMTEC 150 F, Vers. II
ABS (UL 94 HB)
off-white RAL 9002
5.91"x7.87"x2.03"
IP 40



A0615019
COMTEC 150 F, Vers. II
ABS (UL 94 HB)
black RAL 9005
5.91"x7.87"x2.03"
IP 40

COMTEC



A0615107
COMTEC 150 H, Vers. I
ABS (UL 94 HB)
off-white RAL 9002
5.91"x7.87"x2.81"
IP 40



A0615109
COMTEC 150 H, Vers. I
ABS (UL 94 HB)
black RAL 9005
5.91"x7.87"x2.81"
IP 40



A0615117
COMTEC 150 H, Vers. II
ABS (UL 94 HB)
off-white RAL 9002
5.91"x7.87"x2.81"
IP 40



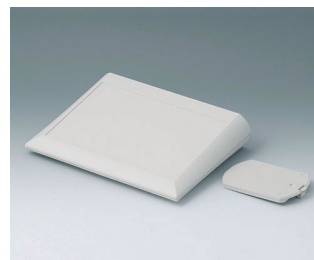
A0615119
COMTEC 150 H, Vers. II
ABS (UL 94 HB)
black RAL 9005
5.91"x7.87"x2.81"
IP 40



A0620007
COMTEC 200 F, Vers. I
ABS (UL 94 HB)
off-white RAL 9002
7.87"x5.91"x1.69"
IP 40



A0620009
COMTEC 200 F, Vers. I
ABS (UL 94 HB)
black RAL 9005
7.87"x5.91"x1.69"
IP 40



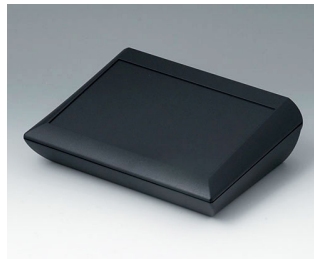
A0620017
COMTEC 200 F, Vers. II
ABS (UL 94 HB)
off-white RAL 9002
7.87"x5.91"x1.69"
IP 40



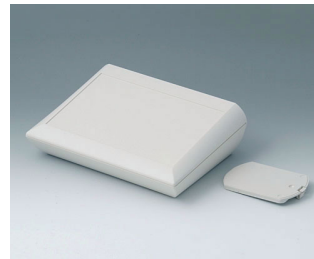
A0620019
COMTEC 200 F, Vers. II
ABS (UL 94 HB)
black RAL 9005
7.87"x5.91"x1.69"
IP 40



A0620107
COMTEC 200 H, Vers. I
ABS (UL 94 HB)
off-white RAL 9002
7.87"x5.91"x2.47"
IP 40



A0620109
COMTEC 200 H, Vers. I
ABS (UL 94 HB)
black RAL 9005
7.87"x5.91"x2.47"
IP 40



A0620117
COMTEC 200 H, Vers. II
ABS (UL 94 HB)
off-white RAL 9002
7.87"x5.91"x2.47"
IP 40



A0620119
COMTEC 200 H, Vers. II
ABS (UL 94 HB)
black RAL 9005
7.87"x5.91"x2.47"
IP 40



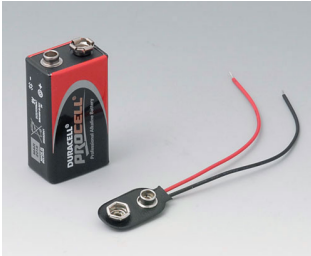
A0629107
COMTEC 290 H, Vers. I
ABS (UL 94 HB)
off-white RAL 9002
11.42"x7.87"x2.97"
IP 40



A0629109
COMTEC 290 H, Vers. I
ABS (UL 94 HB)
black RAL 9005
11.42"x7.87"x2.97"
IP 40

COMTEC

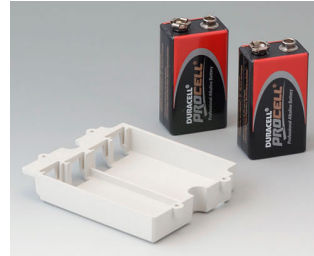
Accessory "battery"



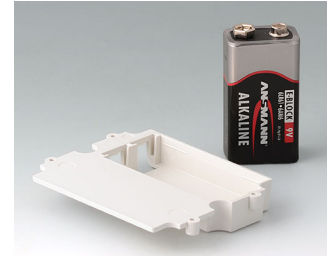
A9160003
Plug-in contact, 1 x 9 V



A9161002
Set of battery clips, 2 x 9 V or 4 x AA
Steel
tin-plated



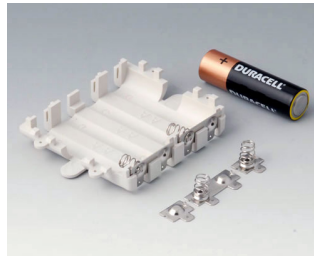
A9174002
Battery compartment, 2 x 9 V
ABS (UL 94 HB)
off-white RAL 9002



A9174003
Battery compartment, 1 x 9 V
ABS (UL 94 HB)
off-white RAL 9002

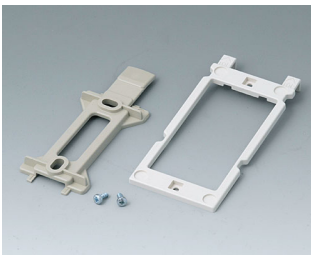


A9174006
Set of battery clips, 1 x 9 V
Steel
tin-plated

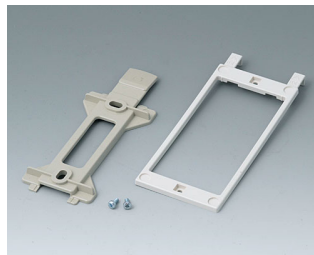


A9345217
Set of battery compartment, 4 x AA
ABS (UL 94 HB)
off-white RAL 9002

Accessory "wall/holder"



B1350048
Wall suspension elements
ABS (UL 94 HB)
pebble gray RAL 7032



B1360048
Wall suspension elements
ABS (UL 94 HB)
pebble gray RAL 7032

Accessory "screws"



A9199008
Set of screws