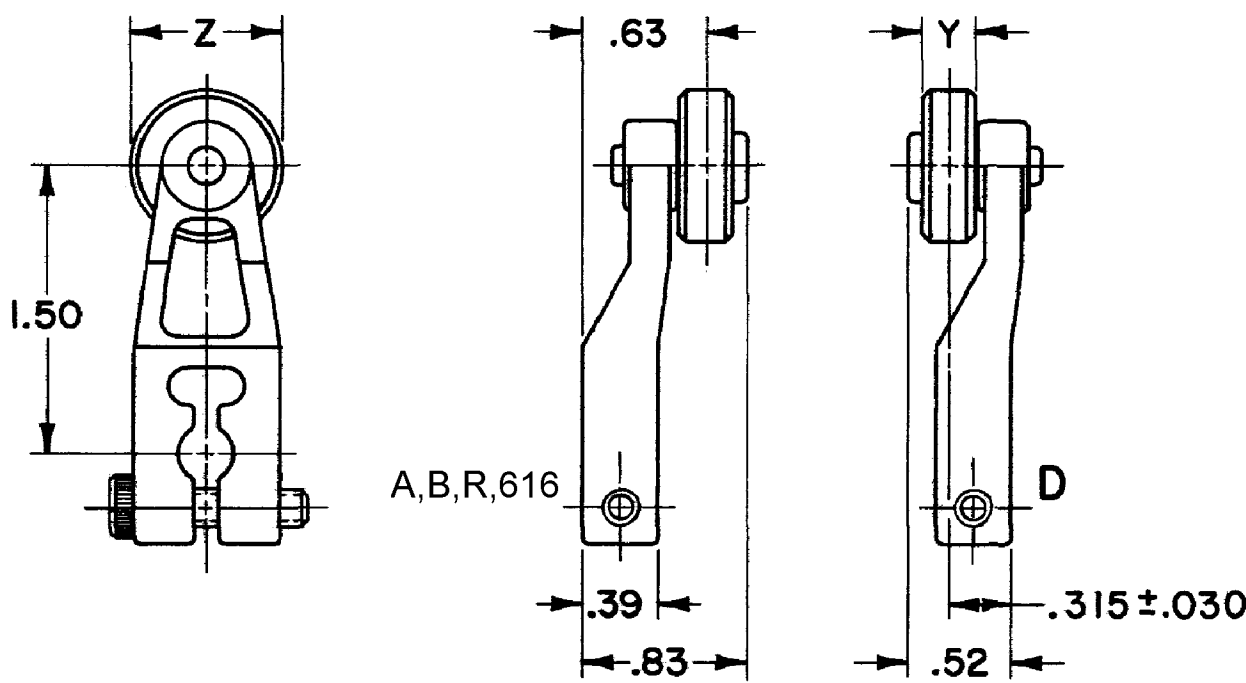
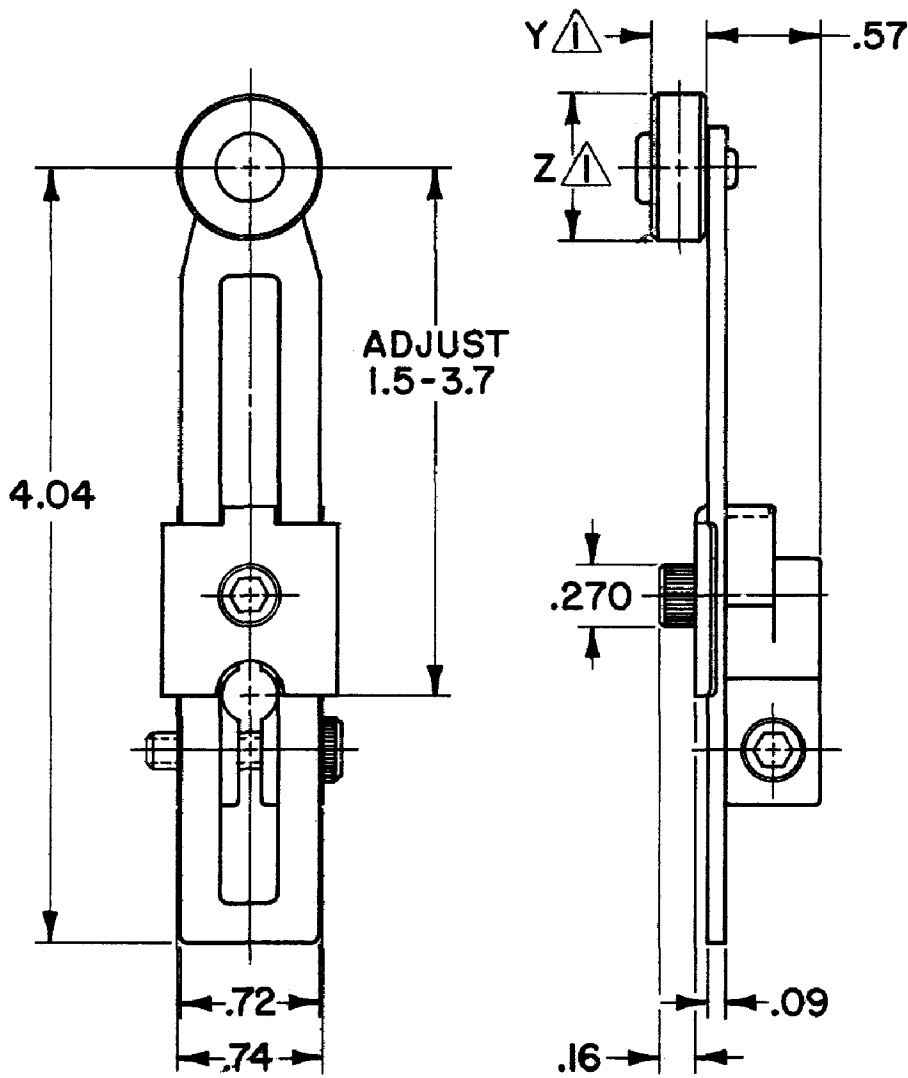


LEVERS FOR ROTARY LIMIT SWITCHES



CATALOG LISTING	ROLLER	Z DIA.	Y WIDTH
LS2Z51A	NYLON	.750	.280
LS2Z51B	STAINLESS STEEL	.750	.280
LS2Z51D	STAINLESS STEEL	.750	.280
LS2Z51R	NYLON	1.59	.280
LS2Z616	STAINLESS STEEL	.750	.280

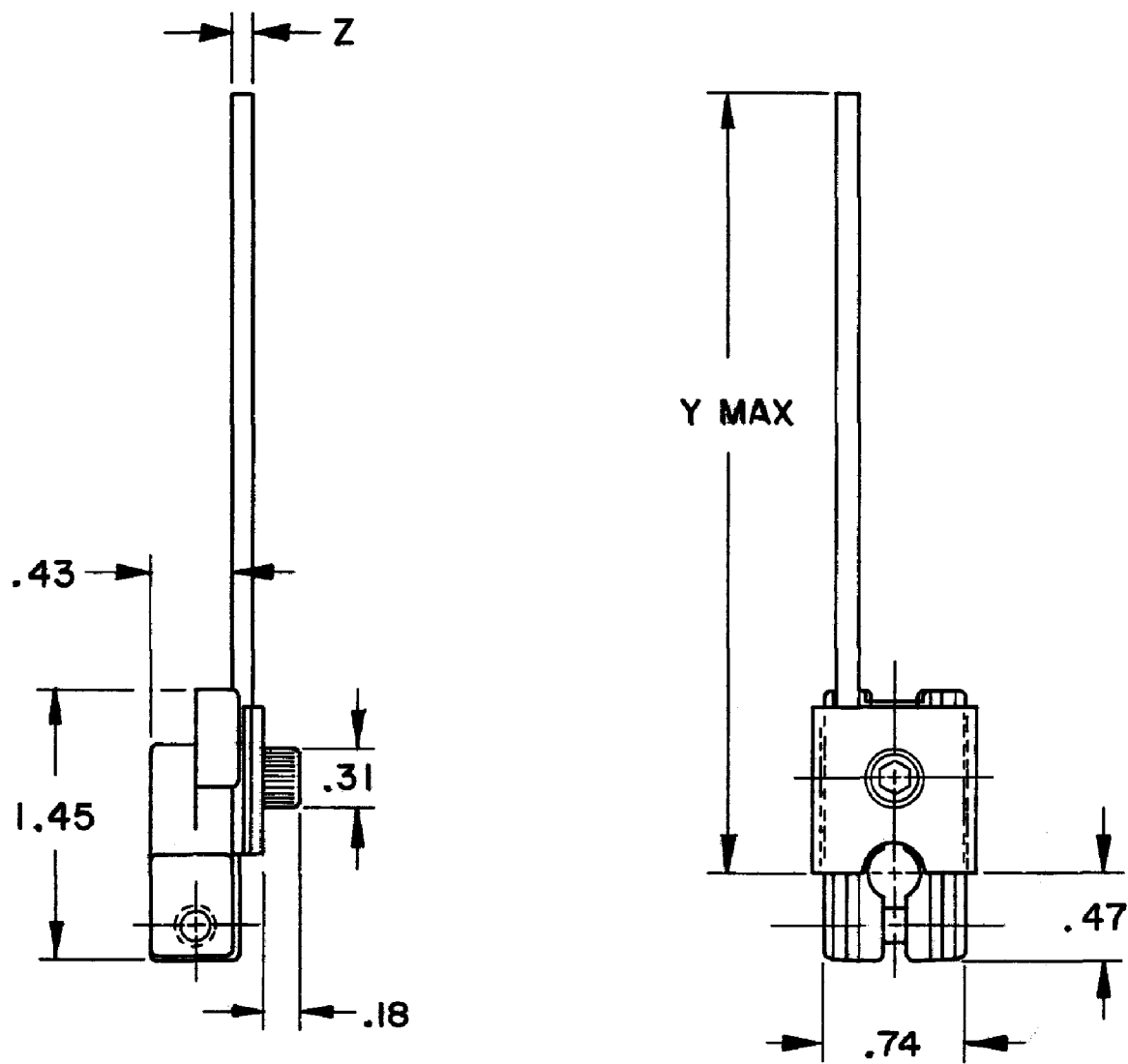
LEVERS FOR ROTARY LIMIT SWITCHES



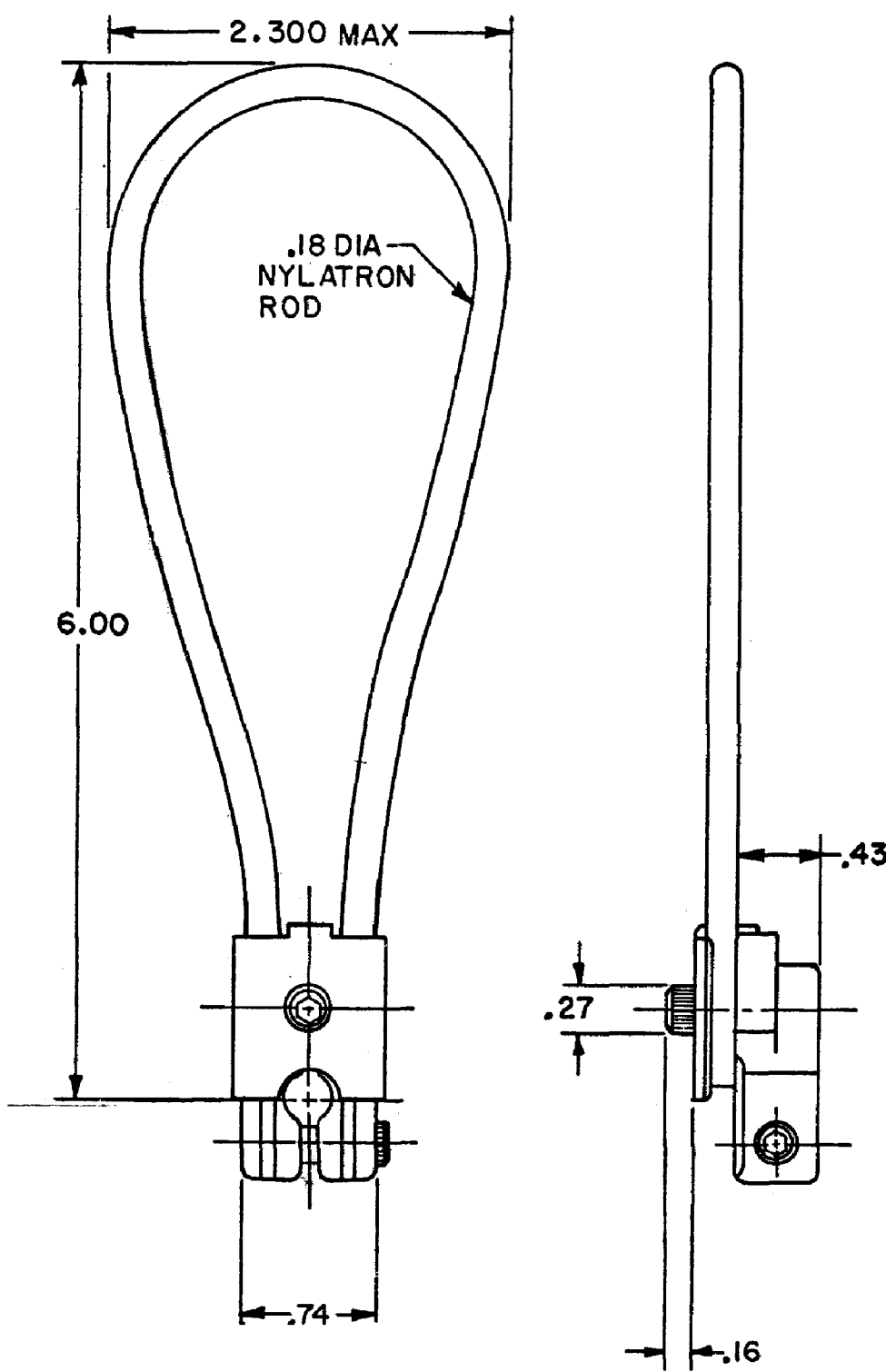
CATALOG LISTING	ROLLER	Z DIA.	Y WIDTH
LS2Z52B	STAINLESS STEEL	.750	.280
LS2Z52D	STAINLESS STEEL	.750	.280
LS2Z52A	NYLON	.750	.280

- NOTES
- 1 ROLLER ON OPPOSITE SIDE OF LEVER
 - 2 LEVER TO ACCEPT SPLINE SHAFT

CATALOG LISTING	Z DIA	Y LENGTH
LS2Z54N	.125	13.0
LS2Z54	0	0



LS2Z 61 LEVER



MASTER REDUCED

MICRO SWITCH

FREEPORT ILLINOIS U.S.A

A DIVISION OF HONEYWELL

FD-100 CODE 9133

THIS DRAWING COVERS A PROPRIETARY ITEM AND IS THE PROPERTY OF MICRO SWITCH. A DIVISION OF HONEYWELL. THIS DRAWING IS NOT TO BE COPIED OR USED WITHOUT THE APPROVAL OF MICRO SWITCH.

SCALE FULL

DO NOT SCALE PRINT

THIRD ANGLE PROJECTION

DESIGN UNITS

U.S. CUSTOMARY

U.S. SI

WEIGHT

LS2Z SERIES

CHART 1

Mouser Electronics

Authorized Distributor

Click to View Pricing, Inventory, Delivery & Lifecycle Information:

[Honeywell:](#)

[LS2Z52D](#)